

HANDBOOK HOOD FAK907XS ACTIVE 2 9925073 630005688

UPDATED MAY 2007

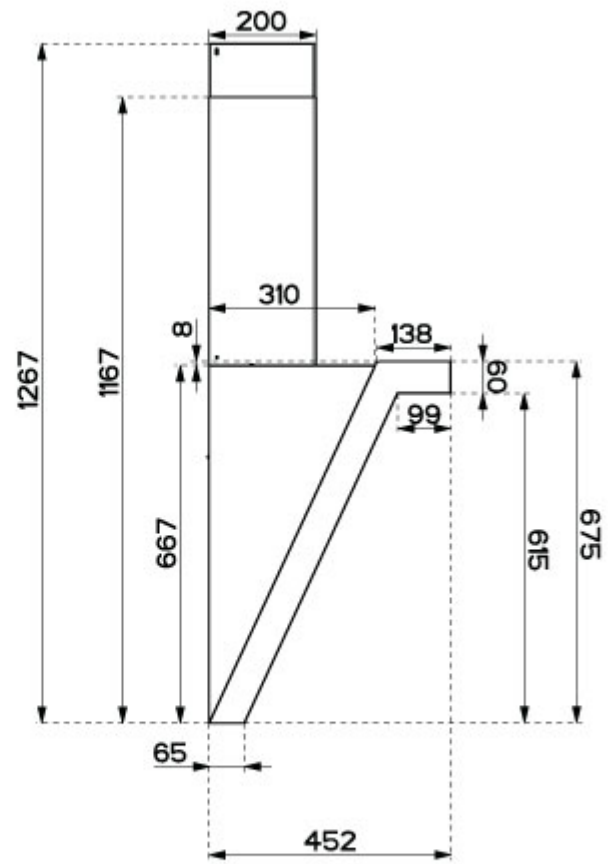
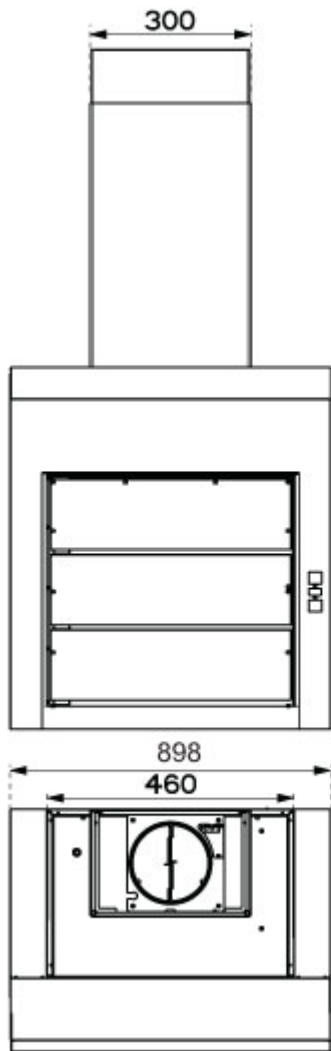
KITCHEN
SYSTEMS



MOTOR NR 01 POWER INPUT : 340 W
 SPEED : 4+INTENSIVE
 LIGHTING : 20 W X3 HALOGEN LAMPS
 TOTAL POWER : 400 W
 FLOW RATE (FREE DELIVERY) : 880 M3/H
 FLOW RATE (IEC 61591) 820/720 M3/H
 SOUND POWER (IEC 60704-2-13) 67
 INPUT VOLTAGE : 230V 50 HZ
 EXIT DIAMETER 150 MM
 PRESSURE MAX 500 PA
 CONTROLS : SPEED CONTROL

CONTENTS:

DRAWING	PAGE 2
TECHNICAL DATA	PAGE 3
ELECTRICAL CONNECTION	PAGE 4
METAL GREASE FILTERS	PAGE 4
COMFORT PANELS	PAGE 6
CONTROLS HOW IT WORKS	PAGE 5
CHARCOAL FILTER	PAGE 6
REPLACING CHARCOAL FILTER	PAGE 7
REPLACING THE LAMPS	PAGE 7
LIST SPARE PARTS	PAGE 8
EXPLODED VIEW	PAGE 11
WIRING DIAGRAM	PAGE 15



Model

Active 2

Motor: 8/40x90

Input Voltage : 230V - 50Hz

Exit diameter: $\phi = 150\text{mm}$

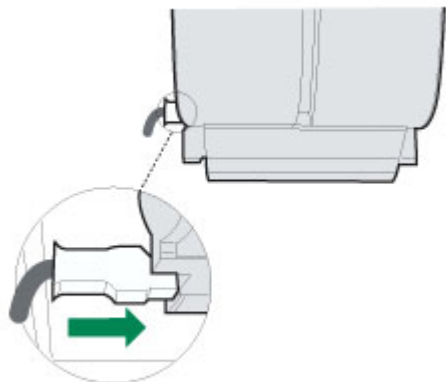
Note:

Speed control by Vario CS; D09 Blower

1 (200 m³/h, 5 Pa) Resistance curve according to IEC 61591

2 (200 m³/h, 15 Pa) Resistance curve according to IEC 61591

<i>SPEED</i>	<i>FLOW RATE</i> <i>Free delivery</i> [m ³ /h]	<i>FLOW RATE</i> <i>IEC 61591 (1/2)</i> [m ³ /h]	<i>PRESSURE</i> <i>Maximum</i> [Pa]	<i>POWER</i> <i>INPUT</i> [W]	<i>SOUND POWER</i> <i>IEC 60704-2-13</i> [dB(A)]
I	280	270/260	290	75	45
II	370	360 / 340	360	155	51
III	590	570 / 510	450	215	60
IV	780	730 / 660	480	300	65
Int	880	820 / 720	500	340	67

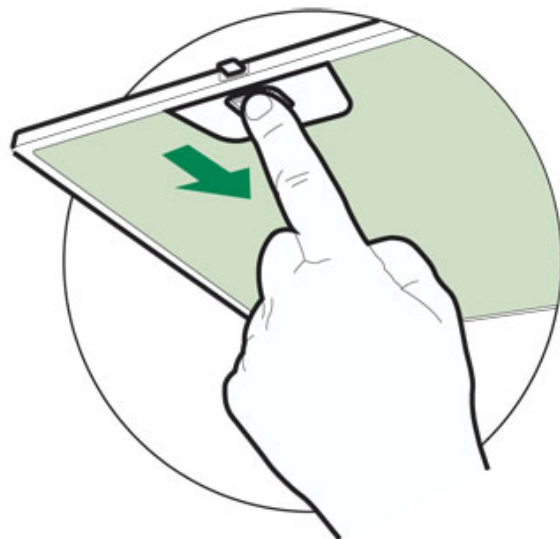


ELECTRICAL CONNECTION •

Connect the hood to the mains through a two-pole switch having a contact gap of at least 3 mm.

- Remove the grease filters being sure that the connector of the feeding cable is correctly inserted in the socket placed on the side of the fan.

Metal grease filters



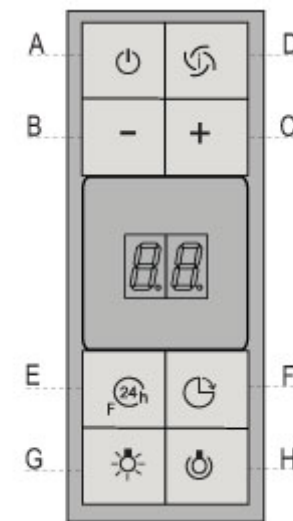
Metal filters can be washed also in a dish machine. They need to be washed every time a drop-symbol appears in the display or at least every two months. In case of very frequent use these have to be washed even more often. Alarm reset • Press the G-key for at least 2 seconds.

Cleaning

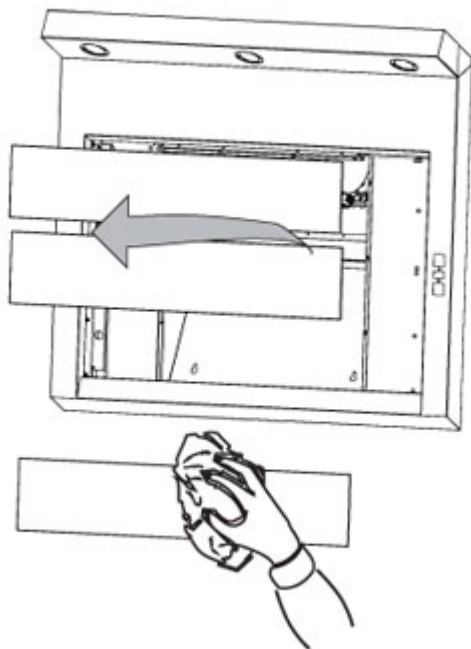
- Open the comfort panel.
- Remove the filters one by one by pushing them backwards and pulling them down contemporaneously.
- Wash the filters. Pay attention not to bend them. Make sure that filters are completely dry before putting them into their seat. (a possible modification of the filter surface doesn't influence its efficiency).
- Place the filters again into their seats and make sure that the handle of the filter remains outside.
- Close the comfort panel.

CONTROL BOARD

Key	Function	Display
A	Switches the extractor motor on and off at the latest selected speed	Indicates the selected speed.
B	Decreases the suction speed.	
C	Increases the suction speed.	
D	By pressing this key it is possible to activate the intensive speed from any previously selected speed. The intensive speed can be activated even when the motor is OFF. This speed has been timed at 10 minutes. After that time the system activates automatically the latest selected speed. This function is suitable for cooking conditions when vapours and smells are of the utmost emission.	HI appears. The spot down on the right side flashes once a second.
E	By pressing this key it is possible to set up the motor to a suction speed at 100 m ³ /h lasting 10 minutes every hour. After this the motor switches off automatically. When the filter saturation is going on it is possible to reset the alarm by pressing this key for about 3 seconds. The indication is visible only when the motor is off.	Indicates the 24-function. The spot down on the right side flashes and the motor is on. Once the process is finished the previous indication disappears: FF Indicates that the metal grease filters saturation alarm has been triggered, and the filters need to be washed. The alarm is triggered after 100 working hours. EF Indicates that the charcoal filter saturation alarm has been triggered, and the filter has to be replaced; the metal grease filters must also be washed. The charcoal filter is triggered after 200 working hours.
F	By pressing this key it is possible to set the delayed shutdown of the appliance to 30 minutes. This function is suitable for a complete elimination of the residual smells. It can be activated at any position, and it is deactivated by pressing the key again or by switching off the motor.	Indicates alternately the selected speed of the hood and the time left before the hood shutdown. The spot down on the right side flashes.
G	Turns light on and off. When pressed for about 2 seconds the upper lighting switches on (only in the 90 cm hood version).	
H	Turns light on and off at reduced intensity.	



COMFORT PANELS



Remove the comfort panels pulling them slightly.

- It is recommended to use a neutral detergent liquid and a damp cloth when washing the outer surface of the comfort panel.
- Wash the inner part of the panel as well by using a neutral de-tergent liquid and a damp cloth; in any case do not use wet sponges or other clothes nor water jet or corrosive detergents.
- Let the get dry, and place them again in their correct position.

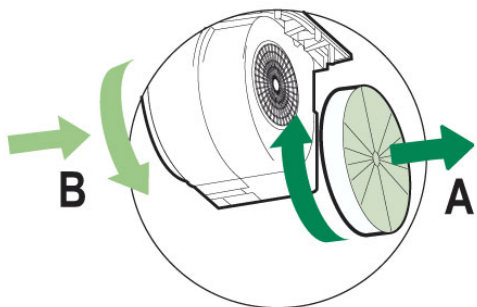
CHARCOAL FILTER

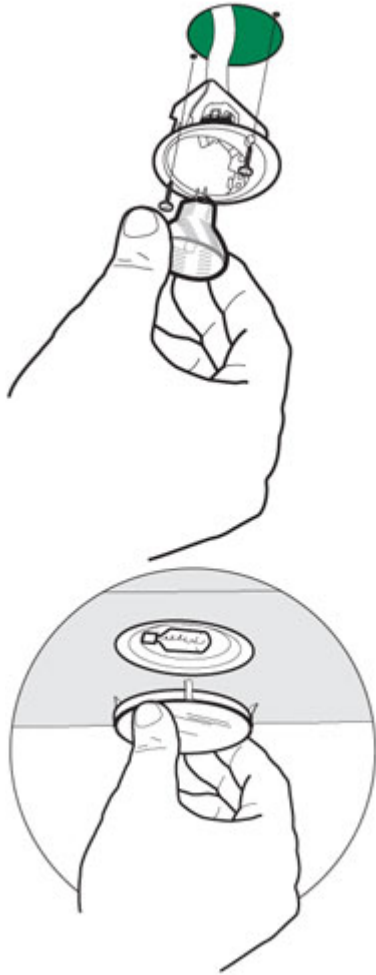
- This filter cannot be washed or regenerated. It must be replaced when the EF appears on the display or at least once every 4 months. Activation of the alarm signal
- In the recycling version hoods the filter saturation alarm must be activated during the installation or later.
- Switch off the hood and the lights.
- Disconnect the hood from the mains supply.
- When restoring the connection press and hold B-key.
- When releasing the key two rotating rectangles appear on the display.
- Within 3 seconds press the B-key until a flashing confirmation appears on the display:
 - 2 flashes with EF - charcoal filter saturation alarm ACTIVATED
 - 1 flash with EF - charcoal filter saturation alarm DEACTIVATED.

REPLACING THE CHARCOAL FILTER

Reset of the alarm signal • Switch off the hood and the lighting. If the 24h-function has been activated this has to be deactivated.

- Press the E-key until the display is unlit. Replacing of the filter
- Remove the comfort panels pulling them slightly.
- Remove the grease filters.
- Remove the saturated charcoal filter as indicated (A).
- Place the new filetrs as indicated (B).
- Put the metal grease filters into their seats.
- Place the comfort panels into their seats again.





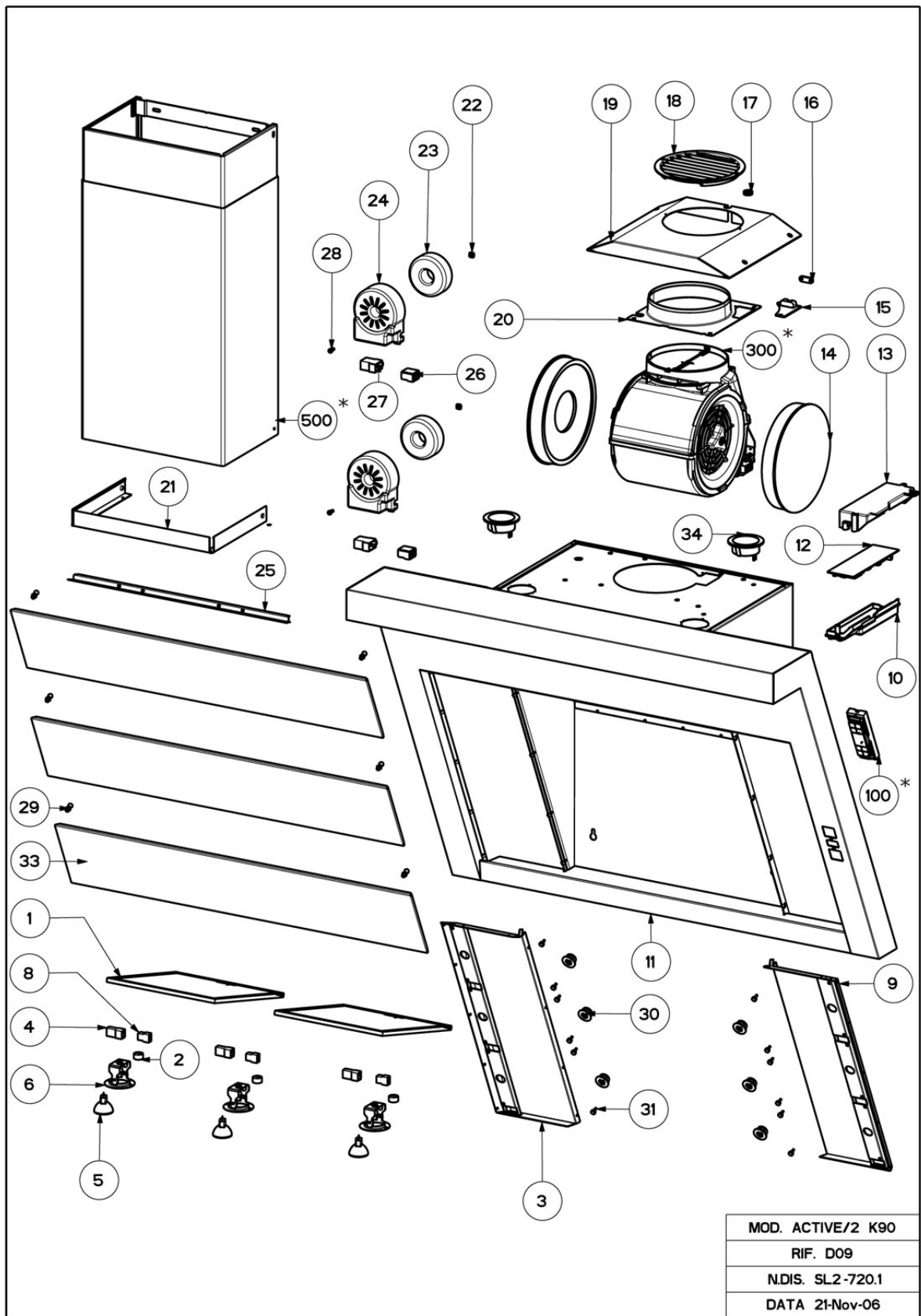
REPLACING OF THE LAMPS 20 W halogen lamps

- Loose the 2 fixing screws of the lighting support and remove the support from the hood.
- Take off the lamp from the support.
- Replace the lamp with a new one. Make sure that the pins are correctly seated in the support.
- Place the support again in its place. Fix it with the screws which were earlier removed. The 90 cm hood version is equipped with halogen lamps (20W) placed in the upper part of the hood. When replacing the lamps proceed as follows:
- Remove the metallic glass holder by levering it from under the metal ring, supporting it with one hand.
- Remove the halogen lamp from the lamp holder.
- Replace the lamp with a new one. Make sure that the pins are correctly seated in the support.
- Place the glass holder again in its place.

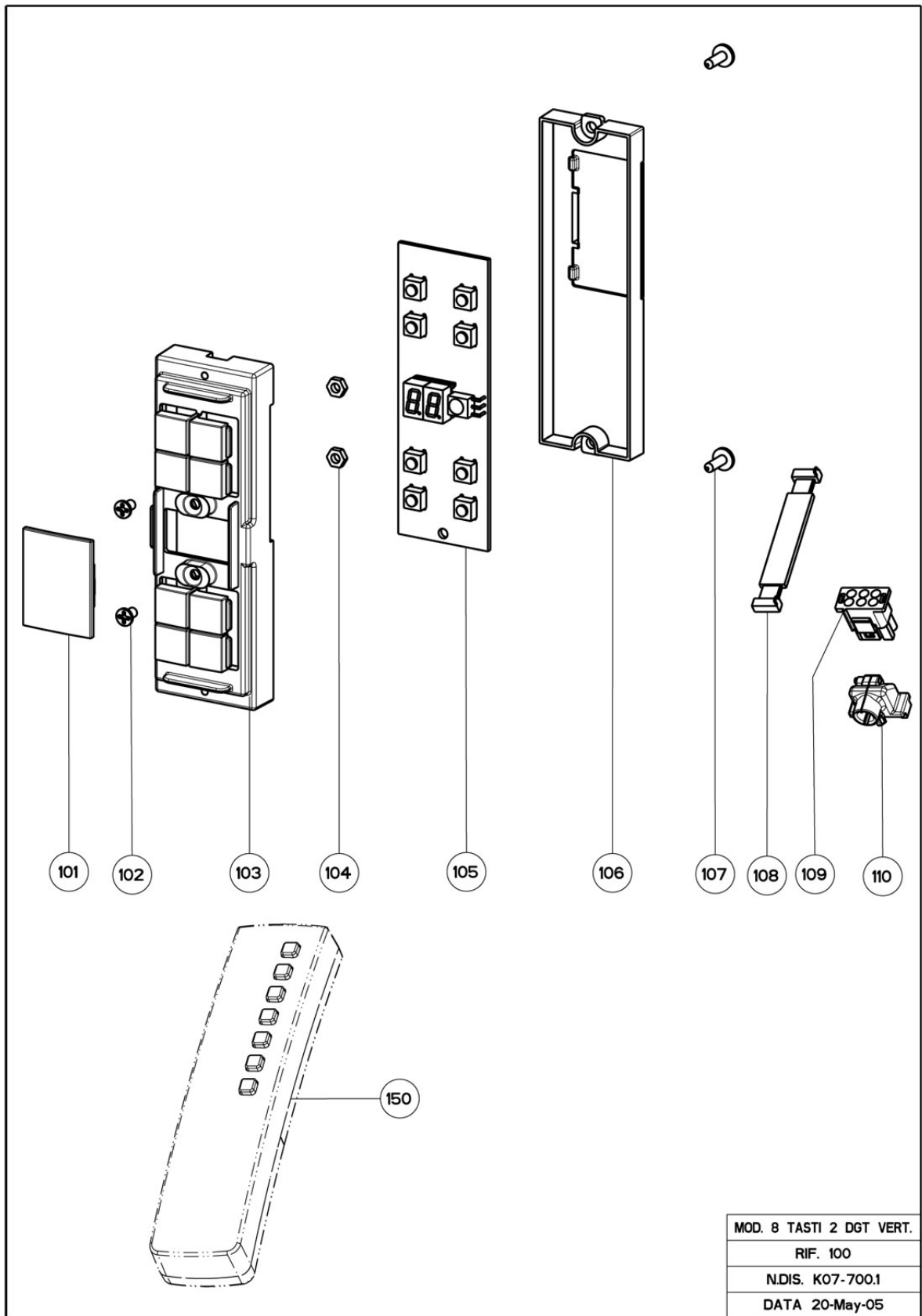
PO SITI ON	SERVICE CODE	DESCRIPTION	DESCRIPTION	DESCRIZIONE	QUA NTIT Y
1	1961107	GREASE FILTER	FILTRE A GRAISSE	FILTRO AUTOPORTANTE	2
3	1961108	INTERNAL LEFT PROTECTION	PROTECTION GAUCHE	PROTEZIONE INTERNA BK 90 SX	1
4	1960025	MALE PLUG BOX 2 WAYS	BOITE PORTAMASCHI 2 CONNECTEURS	SCATOLA PORTAMASCHI 2 VIE	3
5	1960046	HALOGEN LAMP 12V 20W	LAMPE HALOGENE 12V 20W M 262	LAMPADA ALOGENA 12V 20W - 4009228	3
6	1960379	SPOT LIGHT SUPP. X	SUPPORT LAMPE ENSEMBLE X PIATTO	SUPPORTO FARETTO ASS.X PIATTO	3
7	1960380	LAMP HOLDER	DOUILLE LAMPE HALOGENE ENSEMBLE	PORTALAMPADA LAMPADA ALOGENA ASS.	3
8	1960024	FEMALE PLUG BOX 2 WAYS	BOITE CONNEXION ELECTRIQUE 2 CONNEC	SCATOLA PORTAFEMMINE 2 VIE	3
9	1961109	INTERNAL PROTECTION RIGHT	PROTECTION DROITE	PROTEZIONE INTERNA BK 90 DX	1
10	1960135	MAIN CABLE BOX COVER	COUVERCLE BOITE INSTALLATION ELECTR	COPERCHIO SCATOLA IMPIANTO ELETTR.(V2)	1
11	1961110	CASING	CHASSIS	SCocca X 90 S.FRANKE	1
12	1961111	MAIN BOARD	CARTE ELECTRONIQUE	SCHEDA BASE V-CS 5V EMK10 3C 220-50/60HZ	1
13	1960250	MAIN CABLE BOX	BOITE INSTALLATION ELECTRIQUE	SCATOLA IMPIANTO ELETTRICO (V2)	1
15	1960148	FEEDING CABLE COVER	COUVERCLE CABLE ALIMENTATION (V2)	COPERCHIO CAVO ALIMENTAZIONE (V2)	1
16	1960254	CABLE CLAMP D223-110	ETRIER ETRIER SERRE CABLE	STAFFA FERMACAVO	1
17	1960219	CABLE SLEEVE D8 ART.M16LT	SERRE CABLE	PASSACAVO GOMMA D 8 ART.M16LT	1
18	1960647	DIRECT. GRID. D150 BK	GRILLE D 150 MM	GRIGLIA DIREZIONATA D150 BK	1
19	1960636	DUCTED COVER 90°	COUVERCLE PER A RECYCLAGE PLIE	COPERCHIO X FILTRANTE PIEGATO	1
20	1960637	MISALIGNED FLANGE LG no BORDER	BRIDE	FLANGIA DISASSATA LG SENZA BORDO	1
21	1960640	FIXING CHIMNEY	ANGULAIRE FIXATION TUBE	ANGOLARE FISSAGGIO CAMINO X PIEGATO	1
22	1960166	CAPTIVATED NUT 5004-A 4M	ECROU	DADO IN GABBIA Q 404-08 M4	2
23	1960047	TRANSFORMER TOR. 40VA (40 W)	TRASFORMATEURTOR.40W 230V D77-27H2	TRASFORMATORE TOR.40W 230V D77-27H29 C/C	1
23	1960048	TRANSFORMER 60W 230V	TRASFORMATEURTOR.60W 230V D85-29H3	TRASFORMATORE TOR.60W 230V D85-29H32 C/C	1
24	1960294	TOROID SUPPORT	SUPPORT TRANSFORMATEUR 40-60W (V2)	SUPPORTO TOROIDE 40-60W (V2)	2
25	1961112	FILTERS SUPPORT	SUPPORT FILTRES ANTERIEUR	SUPPORTO FILTRO ANTERIORE BK 60-90	1
26	1960022	FEMALEHOLDER BOX	BOITE CONNEXION ELECTRIQUE 4 CONNEC	SCATOLA PORTAFEMMINE 4 VIE	2
27	1960023	MALEHOLDER BOX	BOITE PORTAMASCHI 4 CONNECTEURS	SCATOLA PORTAMASCHI 4 VIE	2
28	1960322	INSERT GUIDE FIX. SCREW M4X10	VIS M4X10 T/T CR PZ ZN	VITE M4X10 T/T CR PZ ZN	2
29	1960645	SNAPLOCK 8 MASCHIO ART.40300803609	SNAPLOCK 8	POMELLO FILETTATO M5	6
30	1960644	SNAPLOCK 8 FEMMINA ART.40500803018	SNAPLOCK 8	SNAPLOCK 8 FEMMINA ART.40500803018	6
31	1960626	RUBBER	PARE CHOCS DI AGRAFE PANNEAU	GOMMINO DI BATTUTA PANNELLO	12

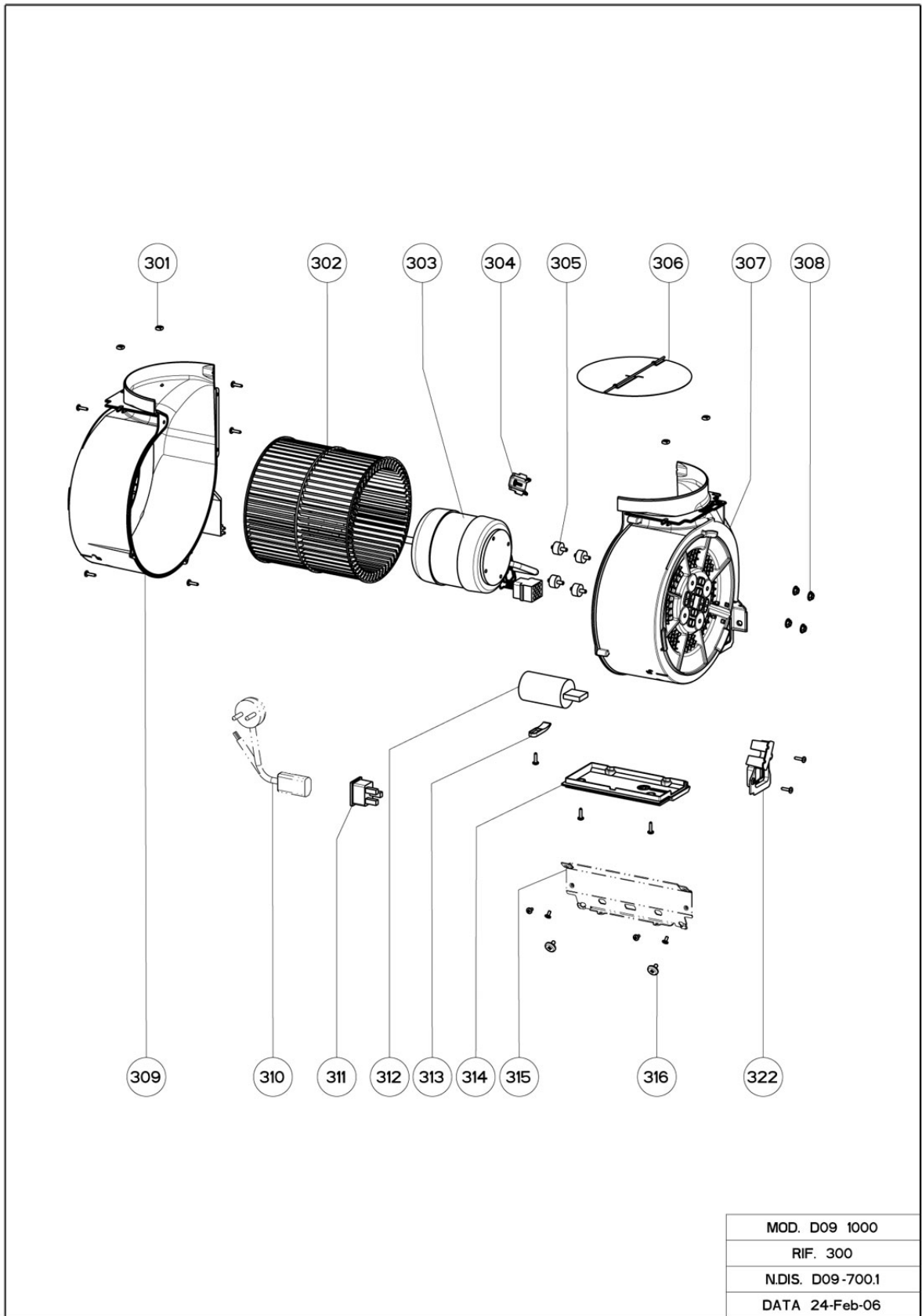
PO SITI ON	SERVICE CODE	DESCRIPTION	DESCRIPTION	DESCRIZIONE	QUA NTIT Y
33	1961113	PANNEL	PANNEAU	PANNELLO ASP.PERIM.CON FONOASS.90 ASS.	1
34	1960387	BUILT IN SPOTLIGHT S1000	LAMPE S1000 C/FASTON	FARETTO AD INCASSO S1000 20W C/FASTON	2
100	1960649	CONTROL W 2T T S.HANSA	ENSEMBLE COMMANDES ELETTR. VERTICA	GRUPPO COM.EL 4X2-2 DIGIT VERT.FRANKE	1
101	1960650	GLASS CONTROL W 2T T S.HANSA	VERRE COMMANDES	VETRINO COMANDI FRANKE PC	1
102	1960651	VITE M3X6 TSP CR PZ ZN	VIS M3X6 TSP	VITE M3X6 TSP CR PZ ZN	2
103	1960652	CONTROL W 2T T S.HANSA	BOITE COMMANDES	SCATOLA C.4X2 2D.FRANKE GM S.VARIO D VER	1
104	1960653	NUT	ECROU	DADO FE ZN M3 CHIAVE 5,5	2
105	1960654	CONTROL BOARD	CIRCUIT IMPRIME COMMANDES VERTICAL	SCHEDA TASTIERA 4X2-2 DIGIT VERTICALE	1
106	1960655	CONTROL W 2T T S.HANSA	COUVERCLE COMMANDES	COPERCHIO COMANDI PP-V2	1
107	1960656	SCREW 2,9X9,5 RST PR PZ SPU ZN	VIS 2,9X9,5	VITE 2,9X9,5 RST PR PZ SPU ZN	2
108	1960016	FLAT C/CONN 10 WAY L0 750 MM	FLAT C/CONN.10 CONNECTEURS L=750	FLAT C/CONN.10 VIE L=750	1
109	1960032	CONNECTOR 9 VIE V2	CONNEXION 9 CONNECTEURS V2	CONNETTORE MASCHIO 9 VIE V2	1
110	1960104	CABLE FIXING (HIL-LO)	ARRET CABLE (HI-LO)	BLOCCACAVO (HI-LO)	1
300	1961066	GRUPPO MOTORE M 8 1000MC 220-50/60	ENSEMBLE MOTEUR	GRUPPO M.8 1000MC 220-50/60HZ CLI	1
301	1961067	DADO QUADRATO	ECROU	DADO QUADRATO FE ZN M4 CH.7 H3,2	4
302	1961068	GIRANTE MOTORE	TURBINE MOTEUR	GIRANTE PP-V2 MOT.8/40 X 90	1
303	1961069	MOTORE 8/40X90 220-240V 50 HZ	MOTEUR 8/40X90 220-240	MOTORE 8/40x90 K 4V 220-240V 50Hz SX	1
304	1961070	FERMACAVO MOTORE	ARRET CABLE DE MOTEUR	FERMACAVO MOTORE PP-V2	1
305	1961071	AMMORTIZZATORE	CPARE CHOCSMOTEUR	AMMORTIZZATORE [PUFFER] MOTORE 8/40 X 90	4
307	1961073	DIFFUSORE DESTRO	CONVOYER DROITE	DIFFUSORE PP-V2 DX	1
308	1960164	M4 MOTOR SECURING NUT	ECROU	DADO ESAGONALE ART.SERPRESS 4M ZN	4
309	1961074	DIFFUSORE SINISTRO	CONVOYER GAUCHE	DIFFUSORE PP-V2 SX	1
311	1960027	CONNECTOR	CONNEXION STS 330 A1 (CLI)	CONNETTORE STS 330 A1 (CLI)	1
312	1960631	CAPACITOR	CONDENSATEUR 6,3MF 400V	CONDENSATORE 6,3MF 400V 10000 ORE	1
313	1961075	STAFFA FISSAGGIO CONDENSATORE	ETRIER SUPPORT CONDENSATEUR	STAFFA FISS.CONDENSATORE (V2)	1
314	1961076	COPERCHIO IMPIANTO ELETTRICO	COUVERCLE INSTALL. ELECTRIQUE ELEC	COPERCHIO IMPIANTO ELETTRICO PP-V2	1
322	1961077	SUPPORTO CONNESSIONE	SUPPORT CONNEXION	SUPPORTO CONNESSIONE PP-V2	1
503	1960200	SPIGOT 120-150	BRIDE REDUCTION 150-120	FLANGIA RIDUZIONE 150-120 BK	1
504	1960566	UPPER CHIMNEY FIXING BRACKET	ETRIER FIXATION TUBE SUP.ZN PIEG	STAFFA FISSAGGIO CAMINO SUP.ZN PIEGATA	1

PO SITI ON	SERVICE CODE	DESCRIPTION	DESCRIPTION	DESCRIZIONE	QUA NTIT Y
505	1960658	LOWER CHIMNEY X H500	TUBE SUPERIEUR H 500	CAMINO SUPERIORE X H500 PIEGATO	1
506	1960659	LOWER CHIMNEY X A500	TUBE INFERIEUR H 500	CAMINO INFERIORE X A500 PIEGATO	1

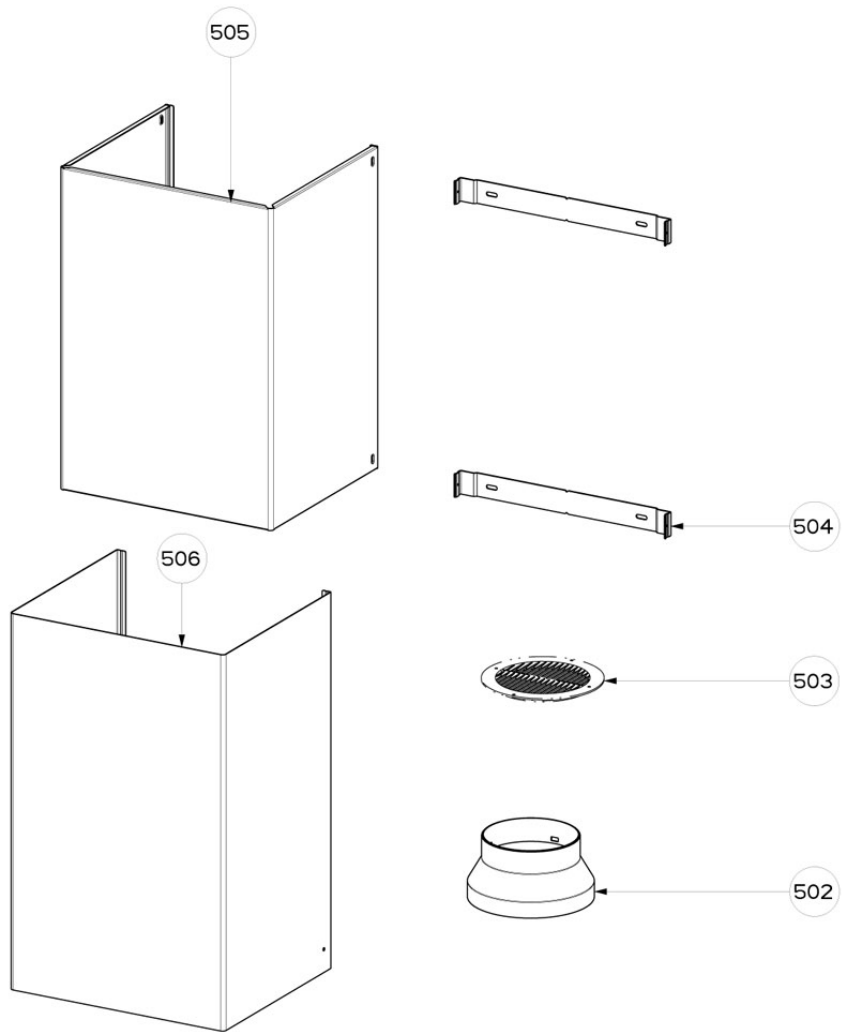


MOD. ACTIVE/2 K90
RIF. D09
N.DIS. SL2-720.1
DATA 21-Nov-06



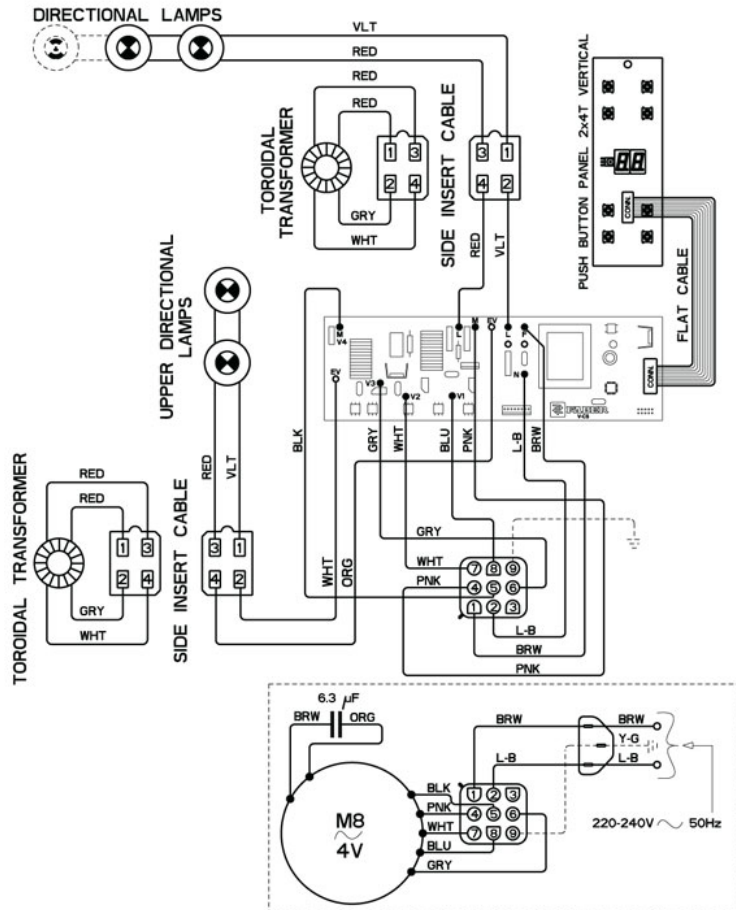


MOD. D09 1000
RIF. 300
N.DIS. D09-700.1
DATA 24-Feb-06



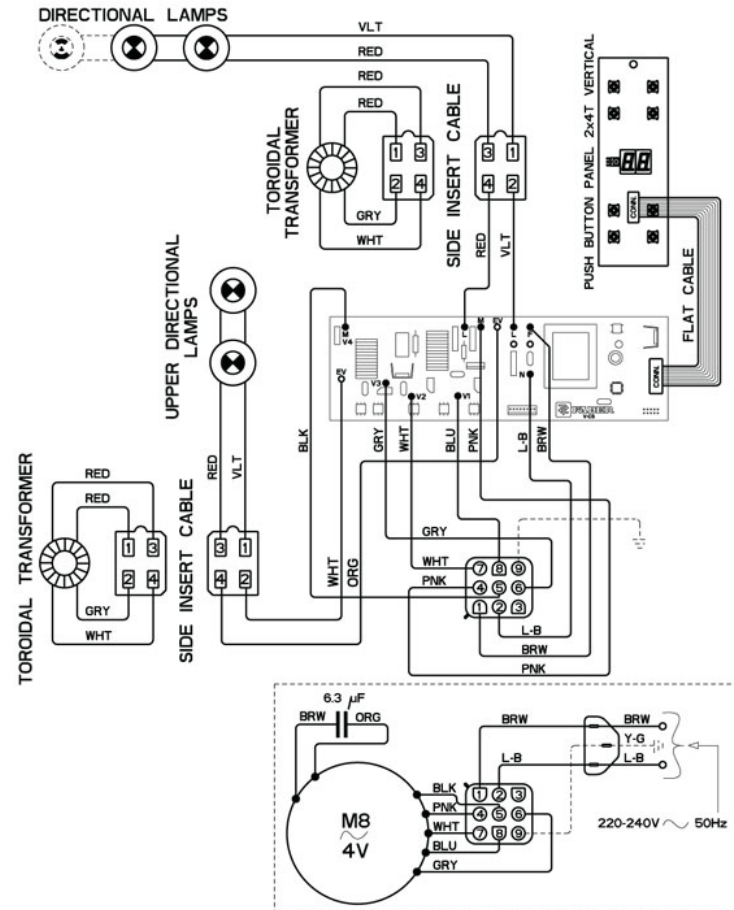
MOD. CAMINO ASPIRANTE
RIF. 500
N.DIS. S98-716.1
DATA 29-Sep-03

- | | |
|----------------------------|-----------------------------|
| I Schema Elettrico | NL Schema Electrisch |
| GB Electric Diagram | E Esquema Eléctrico |
| F Schéma Electrique | PT Esquema Eléctrico |
| D Schema Elektrisch | |



436003540 SL2_018 r1

- | | |
|----------------------------|-----------------------------|
| I Schema Elettrico | NL Schema Electrisch |
| GB Electric Diagram | E Esquema Eléctrico |
| F Schéma Electrique | PT Esquema Eléctrico |
| D Schema Elektrisch | |



436003540 SL2_018 r1