

HANDBOOK HOOD CHEF

9925112 FCH906-P XS 630006070

CONTROL ELECTRONIC PUSH- BUTTONS 3 SPEED + INTENSIVE SPEED + DELAY TIMER

Electr. Suppli
cord mm 2100 mm 220-240 V

Connection
rating 290 W
65 DBA
(w)dbA

Current (A) 220-240

Frequency 50 HZ

Plug type ITALY BIPOLAR

Isolation
class II

Motor power absorbed 250 W – TYPE 8/40X80 4V

I speed 135

II speed 170

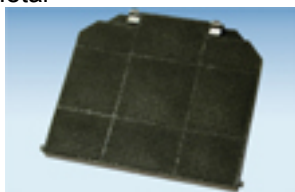
III speed 215

IV speed 250 (intensive speed)

Illumination Nr 2 halogen lamps x 20 w = total 40 w

Filtering Metal

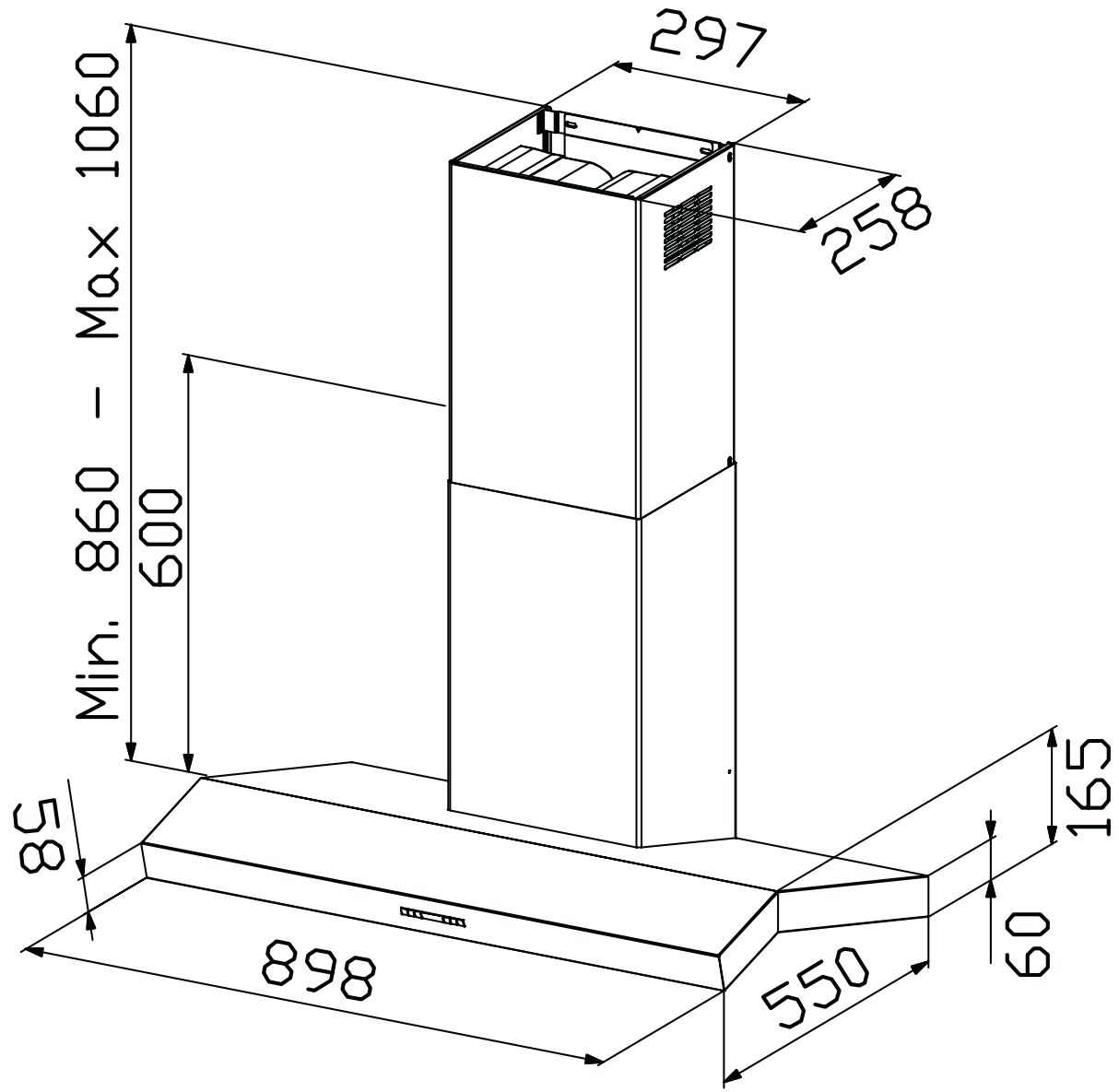
Charcoal
filter



9925204 OPTIONAL

No return air
flap NO EXIT DIAMETER 150 MM





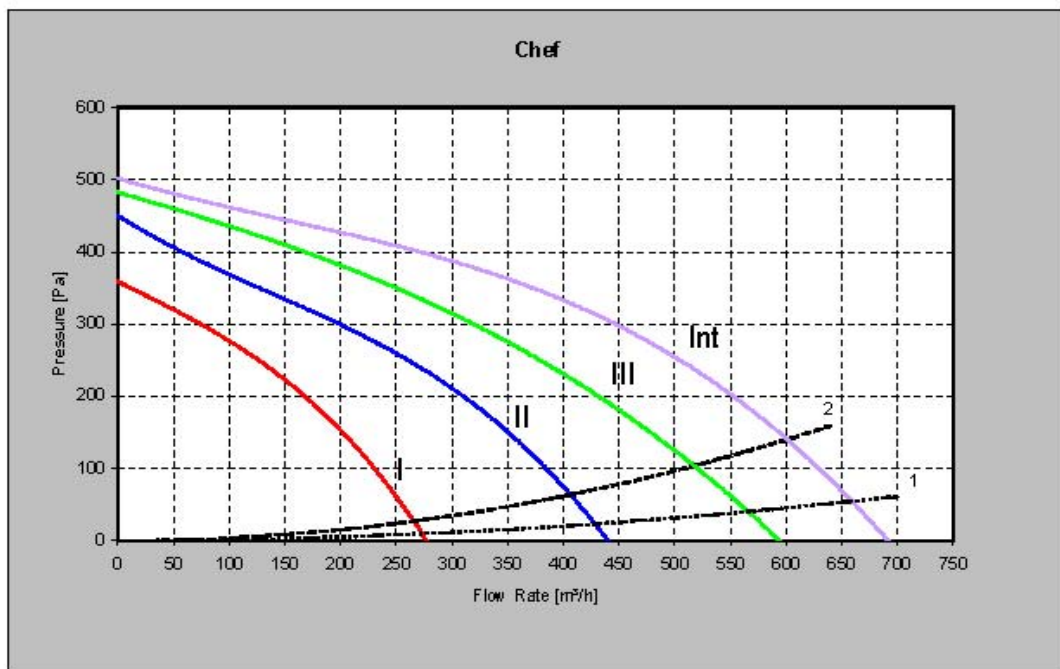
Model

Chef

Motor: 8/40x80 4V
Input Voltage : 230V - 50Hz
Exit diameter: $\phi = 150\text{mm}$

Note: Speed control by μ CS Electronic; D09 Blower
1 (200 m³/h, 5 Pa) Resistance curve according to IEC 61591
2 (200 m³/h, 15 Pa) Resistance curve according to IEC 61591
Confort panel

SPEED	FLOW RATE	FLOW RATE	PRESSURE	POWER	SOUND POWER
	Free delivery [m ³ /h]	IEC 61591 [m ³ /h]	Maximum [Pa]	INPUT [W]	IEC 60704-2-13 [dB(A)]
I	280	270 / 260	360	135	47
II	440	430 / 410	450	170	54
III	590	570 / 520	480	215	61
Int	690	660 / 600	500	250	65





FUNCTION

T1 ON-OFF MOTOR Switches the hood motor on and off. The latest selected speed appears on the display.

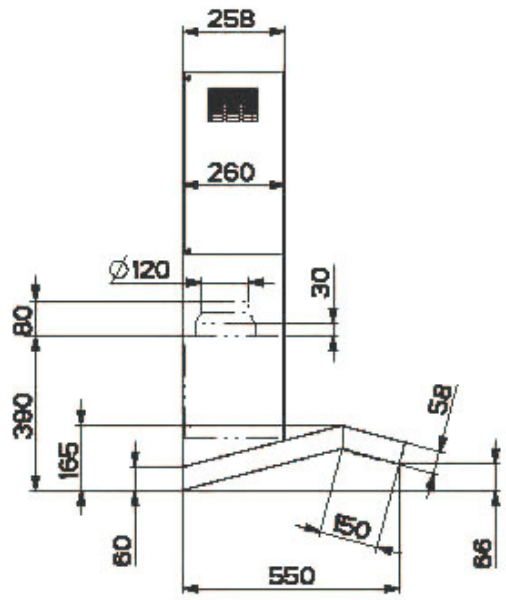
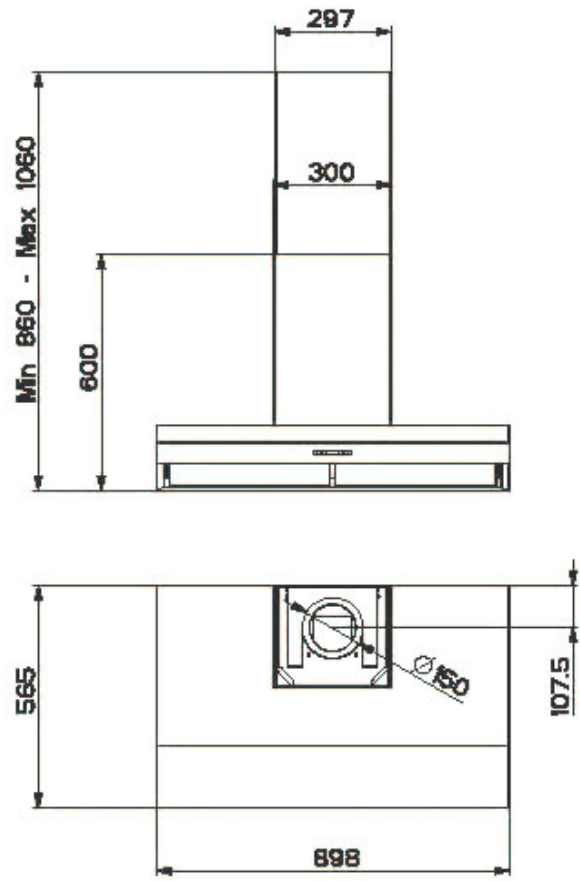
T2 SPEED - Decreases the suction speed: V3 → V2 → V1

T3 SPEED + Increases the suction speed: V1 → V2 → V3

T4 INTENSIVE SPEED Activates the intensive speed from any previously selected speed. The intensive speed can be activated even when the motor is OFF. By pressing the same touch control once again or by switching off the motor this function can be deactivated. Intensive speed cannot be activated when the delay function is on. Intensive speed has been timed at 10 minutes: H appears on the display and a spot down on the right side flashes once a second. After 10 minutes the system activates automatically the latest selected speed.

T5 DELAY Activates and deactivates the delayed shutdown of the hood (motor + lighting) at 30 minutes: the selected speed of the hood appears on the display and a spot down on the right side flashes once a second. By pressing the same touch control once again or by switching off the motor delay function can be deactivated.

L LIGHTING Turns light on and off.

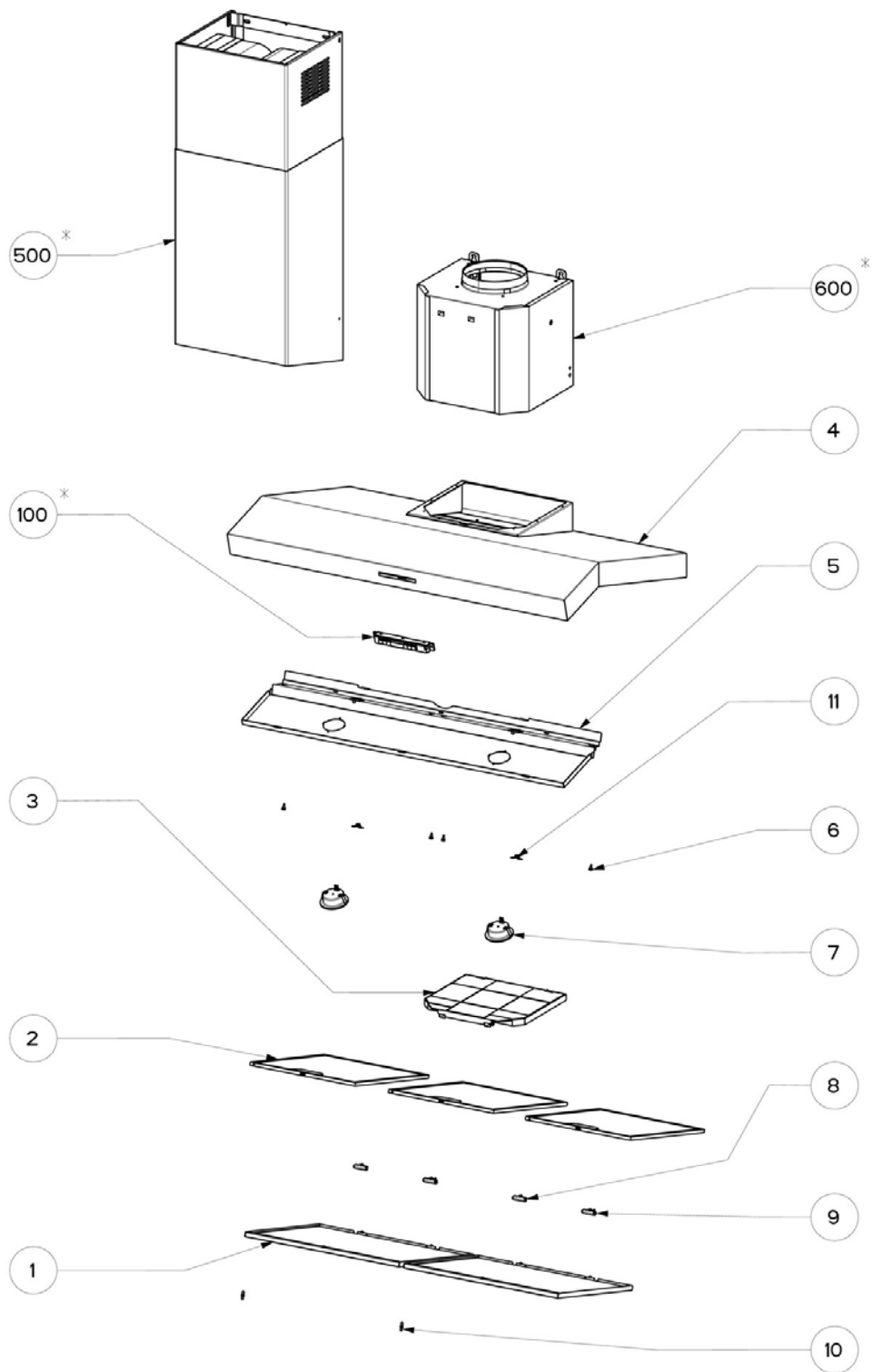


9925112 FCH906PXS 630006070

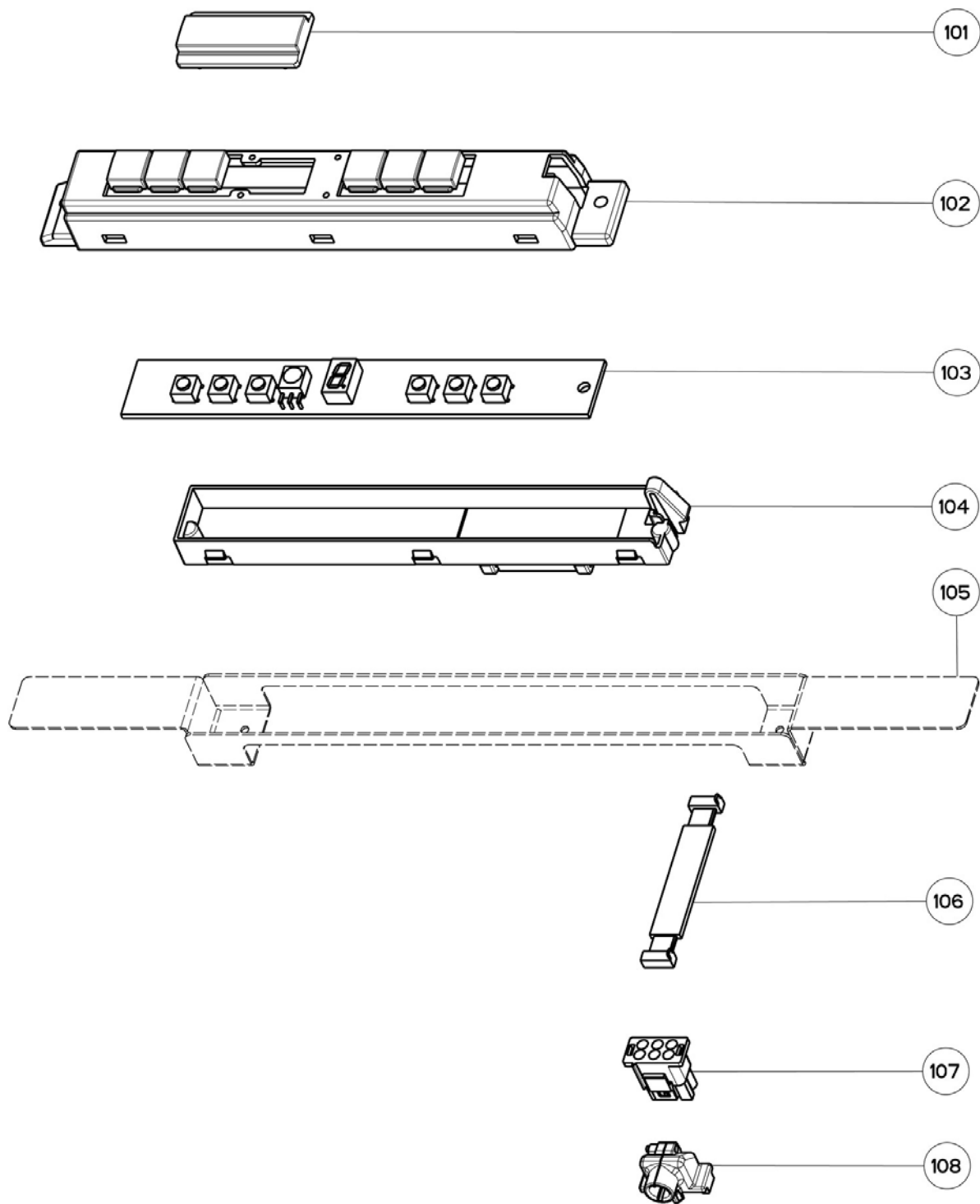
POSIZIONE POSITION	SPARE PART CODE	DESCRIPTION	DESCRIZIONE	QUANTITY
1	1960623	ACUSTIC PANEL	PANNELLO PERIM.X C/FONOASS.CERNIERE EST.	2
2	1960624	GREASER FILTER 60 CM	FILTRO AUTOPORTANTE 280,4x351 (60)	3
4	1961160	CASING CHEF 90 CM	SCOCCA CHEF X EL K03 90 (RICAMBI)	1
5	1960625	LAMPS SUPPORT	SUPPORTO FARETTI ASS.	1
6	1960626	RUBBER	GOMMINO DI BATTUTA PANNELLO	4
7	1960387	BUILT IN SPOTLIGHT S1000	FARETTO AD INCASSO S1000 20W C/FASTON	2
8	1960107	SPOT LIGHT SUPPORT HINGE FOR ISLAND	CERNIERA SUPPORTO FARETTI	2
9	1960326	SPOT LIGHTS SUPPORT HINGE WITH PIN	CERNIERA SUPPORTO FARETTI CON PERNO	2
10	1960308	CLIP PIN	PERNO FERMAGLIO PP0403B	2
11	1960309	CLIP	FERMAGLIO C4411	2
100	1960712	CONTROLS ASSEMBLY	GRUPPO COM.K-CS/M-CS 6-1D ORIZ.FRANKE	1
101	1960128	GLASS CONTROL BOARD	VETRINO COMANDI FRANKE PC	1
102	1960627	CONTROL BOARD BOX -1 D.FRANKE GM S	SCATOLA COM.6-1 D.FRANKE GM S.M-CS OR	1
103	1960628	CONTROLS BOARD	SCHEDA TASTIERA 6-1 DIGIT ROSSI ORIZZ.	1
104	1960129	COVGER CONTROL BOARD PP-V2	COPERCHIO COMANDI PA 6.8 V0	1
105	1960508	CONTROLS BRACKET	STAFFA FISS.COMANDI K03/05 X PIEGATA	1
106	1960629	FLAT CONTROLS 60 6 VIE L=900	FLAT COMANDI 60 6 VIE L=900 C/CONNETTORI	1
107	1960032	CONNECTOR 9 VIE V2	CONNETTORE MASCHIO 9 VIE V2	1
108	1960104	CABLE FIXING (HIL-LO)	BLOCCACAVO (HI-LO)	1
300	1961159	ASSEMBLY MOTOR	GRUPPO M.8 800MC 220-50/60HZ CLI FERRITE	1
302	1961116	ROTOR MOTOR	GIRANTE PP-V2 MOT.8/40 X 80	1
303	1961115	MOTOR	MOTORE 8/40x80 K 4V 220-240V 50Hz SX	1
304	1961070	MOTOR CABLE FIXING	FERMACAVO MOTORE PP-V2	1
305	1961117	MOTOR SHOCK ABSORBER	AMMORTIZZATORE [PUFFER] MOTORE 8/40 X 80	4
307	1961073	RIGHT BLOWER	DIFFUSORE PP-V2 DX	1
308	1960164	M4 MOTOR SECURING NUT	DADO ESAGONALE ART.SERPRESS 4M ZN	4
309	1961074	BLOWER LEFT	DIFFUSORE PP-V2 SX	1
311	1960027	CONNECTOR	CONNETTORE STS 330 A1 (CLI)	1
312	1960631	CAPACITOR	CONDENSATORE 6,3MF 400V 10000 ORE	1
313	1960194	CONDENSER FIXING BRACKET	FERMACONDENSATORE	1

POSIZIONE POSITION	SPARE PART CODE	DESCRIPTION	DESCRIZIONE	QUANTITY
314	1961076	ELECTRIC WIRING COVER	COPERCHIO IMPIANTO ELETTRICO PP-V2	1
316	1961118	SCREW 4X9	VITE 4X9 AFLLS TMT D9 FR PZ PMT	2
322	1961077	CONNECTION SUPPORT	SUPPORTO CONNESSIONE PP-V2	1
501	1960633	LOWER CHIMNEY	CAMINO INFERIORE X A545 S.FRANKE	1
502	1960412	UPPER CHIMNEY X F470	CAMINO SUPERIORE RETT.X F470 PIEGATO	1
503	1960566	UPPER CHIMNEY FIXING BRACKET	STAFFA FISSAGGIO CAMINO SUP.ZN PIEGATA	2
504	1960200	SPIGOT 120-150	FLANGIA RIDUZIONE 150-120 BK	1
505	1961078	BENT BRACKET	SUPPORTO RACCORDO FILTRANTE ZN	1
506	1960243	FILTERING CONNECTION	RACCORDO FILTRANTE (UP) (V2)	1
507	1960171	SPACER CONNECTION FOR RECIRCULATING	DISTANZIALE RACC.FILT.DISASS.(PARETE)	2
602	1961079	BRACKET EASY CUBE	STAFFA D09 ZN EASY CUBE	1
603	1960218	PARTICULAR CABLE GUIDE	PARTICOLARE PASSACAVO (V2)	2
604	1960166	CAPTIVATED NUT 5004-A 4M	DADO IN GABBIA Q 404-08 M4	1
606	1960407	FIXING KIT	FISSAGGIO CAPP A ASSIEMATO	2
607	1960256	PLUG S8	TASSELLO S8 C FISCHER 51049	4
608	1960324	ZINC PLATED SCREW	VITE ZINCATA M4X40 TC CACC.	1
609	1960254	CABLE CLAMP D223-110	STAFFA FERMACAVO	1
610	1960148	FEEDING CABLE COVER	COPERCHIO CAVO ALIMENTAZIONE (V2)	1
613	1960239	BODY FIXING KNOB	POMELLO FISSAGGIO SCOCCA	1
614	1960318	SCREW 4,2X44	VITE 4,2X44,4 T/T F.A PM ZN	4
615	1960432	DIFFUSER SUPPORT ASS.STILO/3 ZN	SUPPORTO DIFFUSORE ASS.STILO/3 ZN	1
616	1960258	CHARCOAL FILTER COVER	TAPPO C.A. (V2)	1
617	1960014	ELECTRIC CABLE	CAVO AL.3X0,75X2100W 232+644(CONN) SP.EU	1
618	1960250	MAIN CABLE BOX	SCATOLA IMPIANTO ELETTRICO (V2)	1
619	1960634	ELECTRONIC BOARD M-CS M8 4V 220V	SCHEDA BASE M-CS M8 4V 220V 50/60HZ	1
620	1960135	MAIN CABLE BOX COVER	COPERCHIO SCATOLA IMPIANTO ELETTR.(V2)	1
624	1960022	FEMALEHOLDER BOX	SCATOLA PORTAFEMMINE 4 VIE	1
625	1960023	MALEHOLDER BOX	SCATOLA PORTAMASCHI 4 VIE	1
626	1960047	TRANSFORMER TOR. 40VA (40 W)	TRASFORMATORE TOR.40W 230V D77-27H29 C/C	1
627	1960164	M4 MOTOR SECURING NUT	DADO ESAGONALE ART.SERPRESS 4M ZN	1
628	1960294	TOROID SUPPORT	SUPPORTO TOROIDE 40-60W (V2)	1
629	1960302	WASHER 5X34 2MM	RONDELLA D.7,5X34 SP.2 MM	1

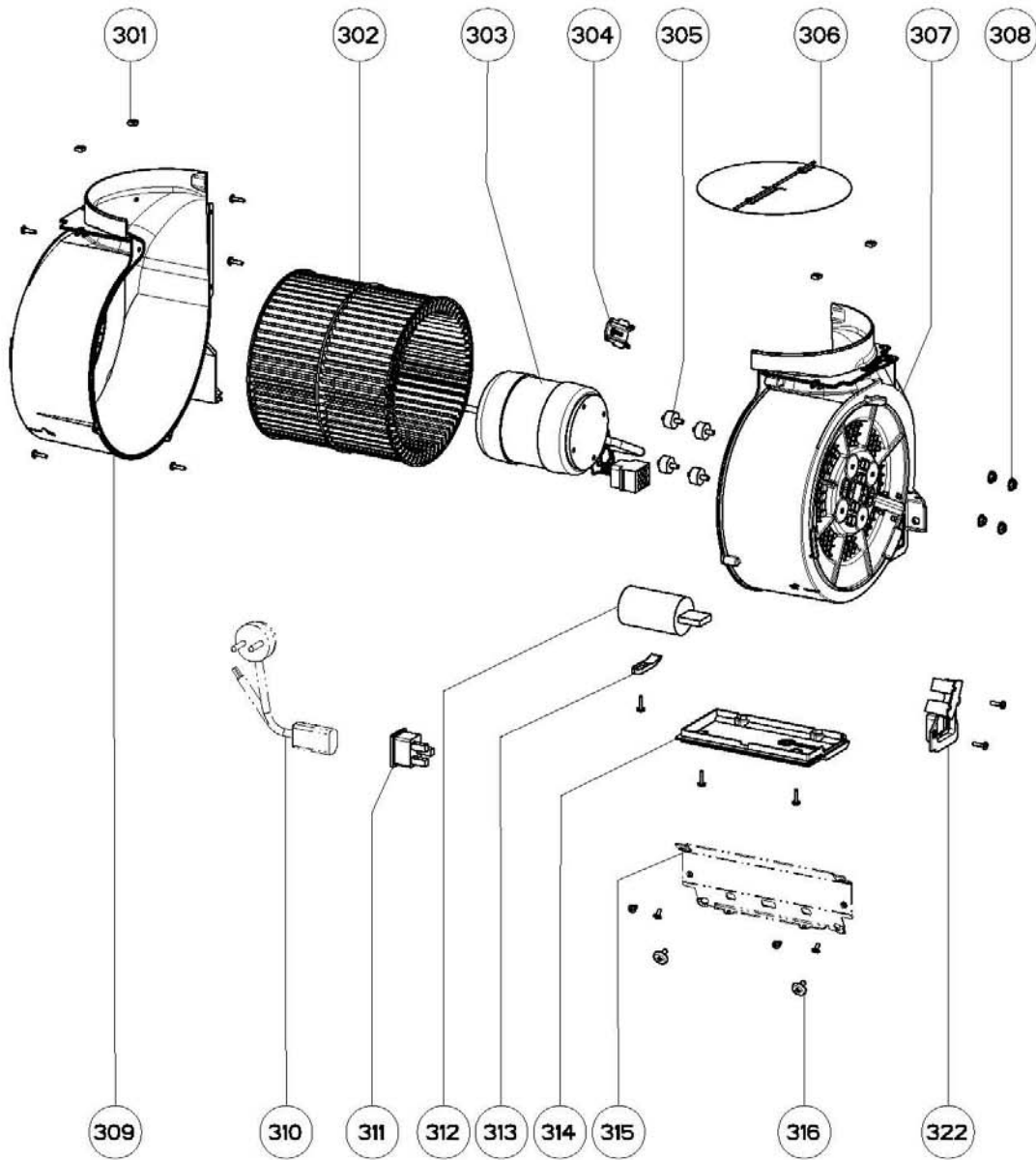
POSIZIONE POSITION	SPARE PART CODE	DESCRIPTION	DESCRIZIONE	QUANTITY
630	1960301	NUT	DADO AD ALETTE M4	1
632	1960103	REFINING COVER F. EASY CUBE	TAPPO RIFINITURA PER EASY CUBE	2
633	1960224	SECURING PIN D4,6X11	CLIP D4,6X11 ART.000670111 BK	1



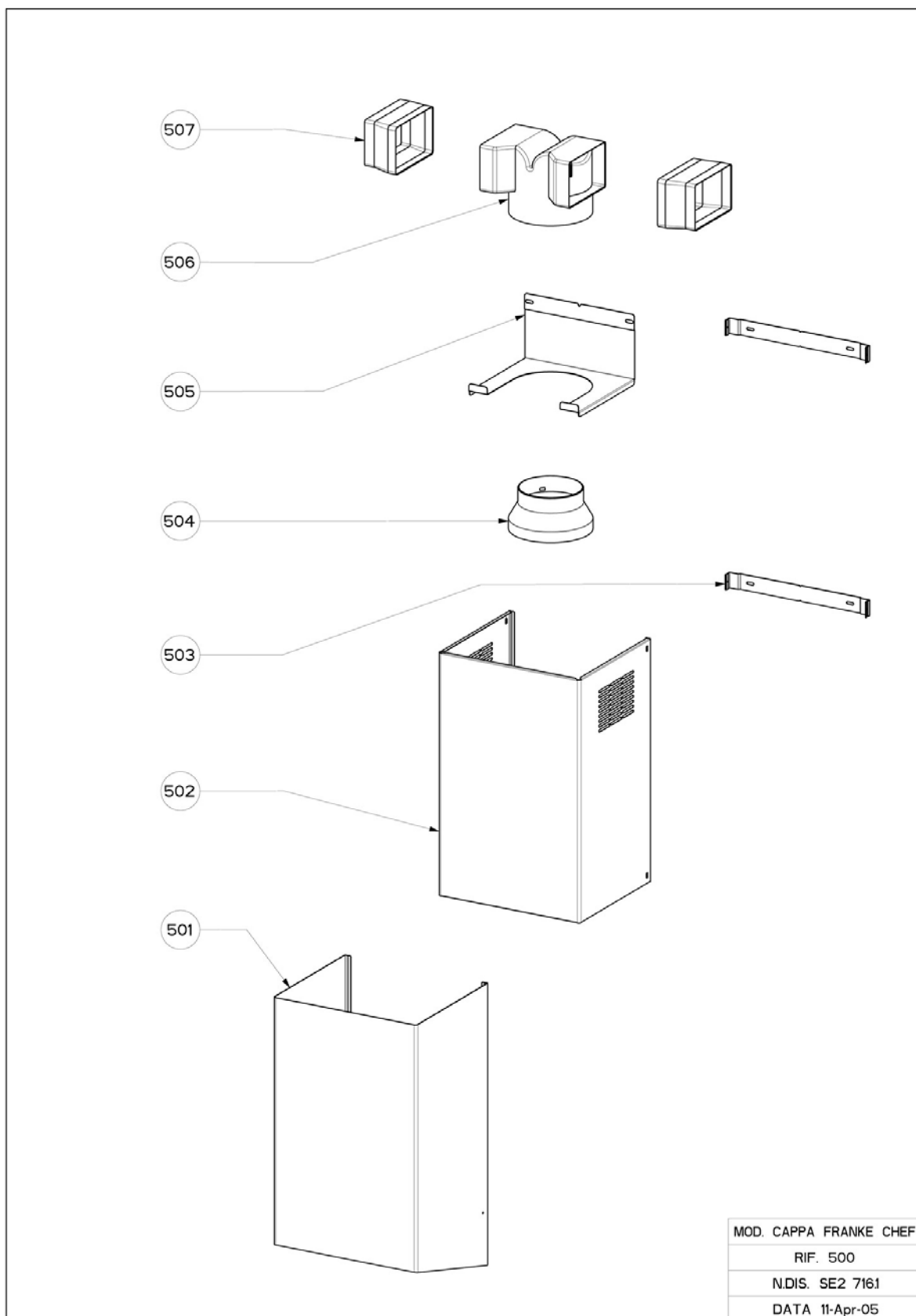
MOD. CHEF
RIF. SE2
NDIS. SE2.710.1
DATA 09-Sep-05 R1-V.0

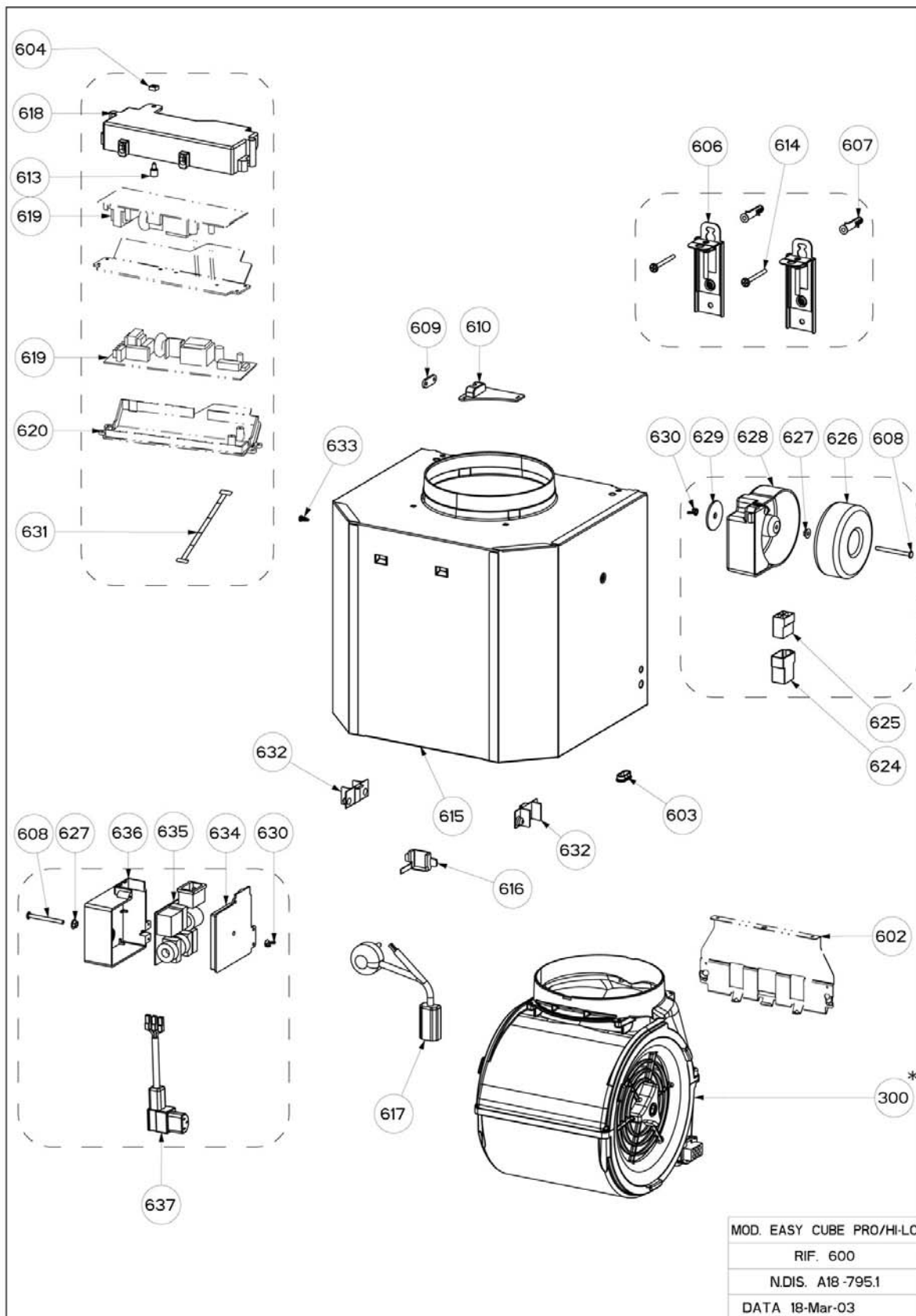


MOD. 6 TASTI 1 DGT ORIZZ.
RIF. 100
N.DIS. K03.702.1
DATA 20-May-05 REV.





















MOD. D09 800
RIF. 300
N.DIS. D09-704.1
DATA 24-Feb-06

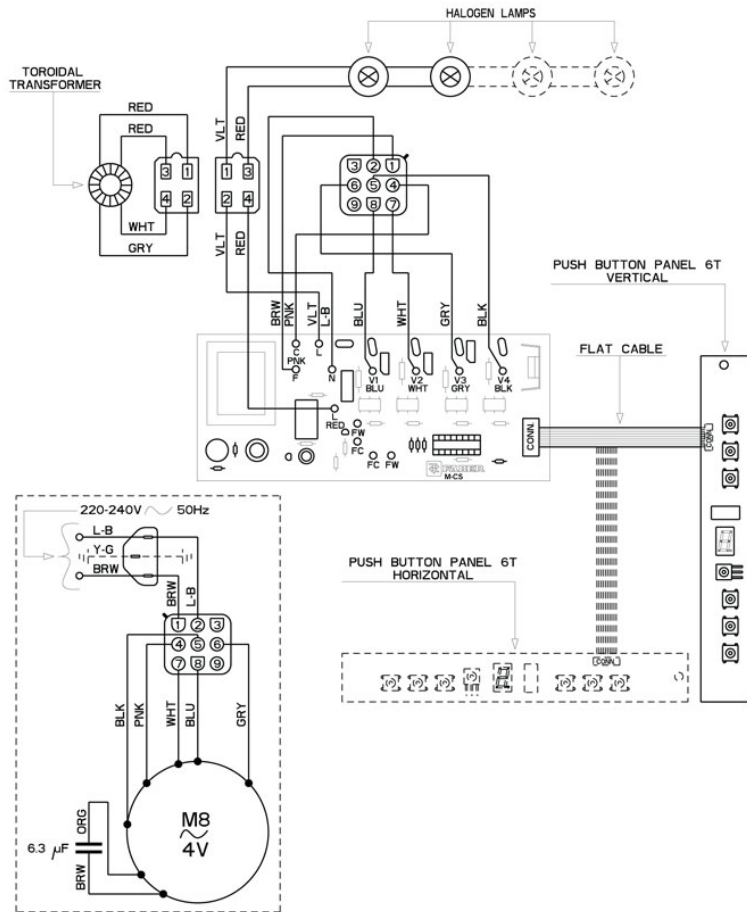




KEY WIRING DIAGRAM

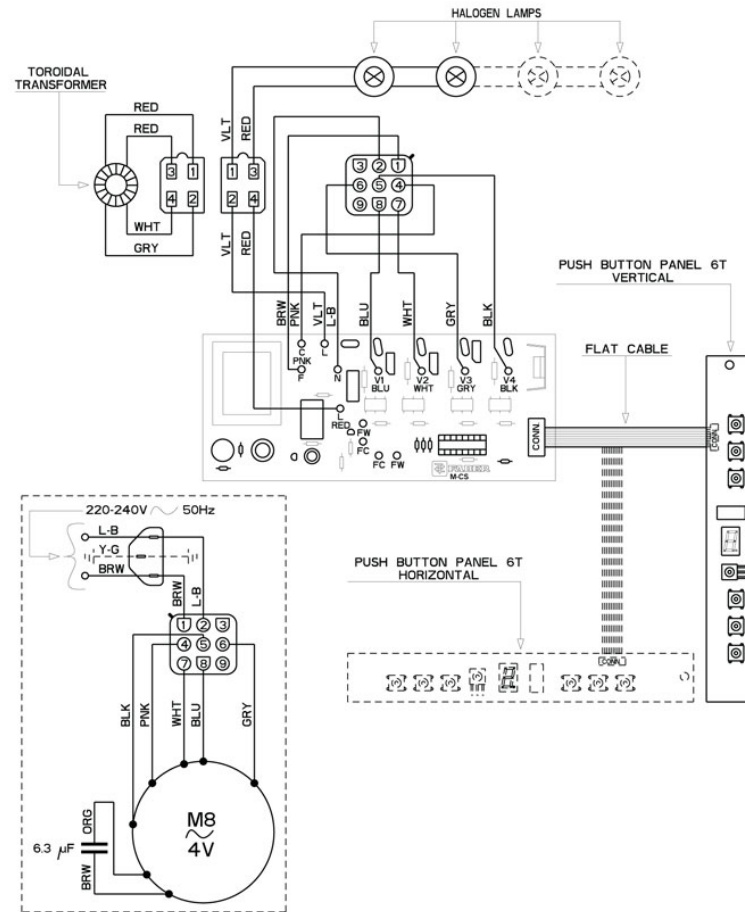
	Autotrasformer
	Trasformer
	Capacitor
	Connector
	Switch Off
	Fluorescent Lamp
	Direction Lamp
	LED
	Spia Lamp
	Terminal Block
	Motor
	Button Switch MS
	Power
	Button Switch
	Card
	Card
	Starter
	Fan

- | | | | |
|-----------|-------------------|-----------|-------------------|
| I | Schema Elettrico | NL | Schema Elektrisch |
| GB | Electric Diagram | E | Esquema Eléctrico |
| F | Schéma Electrique | PT | Esquema Eléctrico |
| D | Schema Elektrisch | | |



436002935 SD8_010 r-

- | | | | |
|-----------|-------------------|-----------|-------------------|
| I | Schema Elettrico | NL | Schema Elektrisch |
| GB | Electric Diagram | E | Esquema Eléctrico |
| F | Schéma Electrique | PT | Esquema Eléctrico |
| D | Schema Elektrisch | | |



436002935 SD8_010 r-