

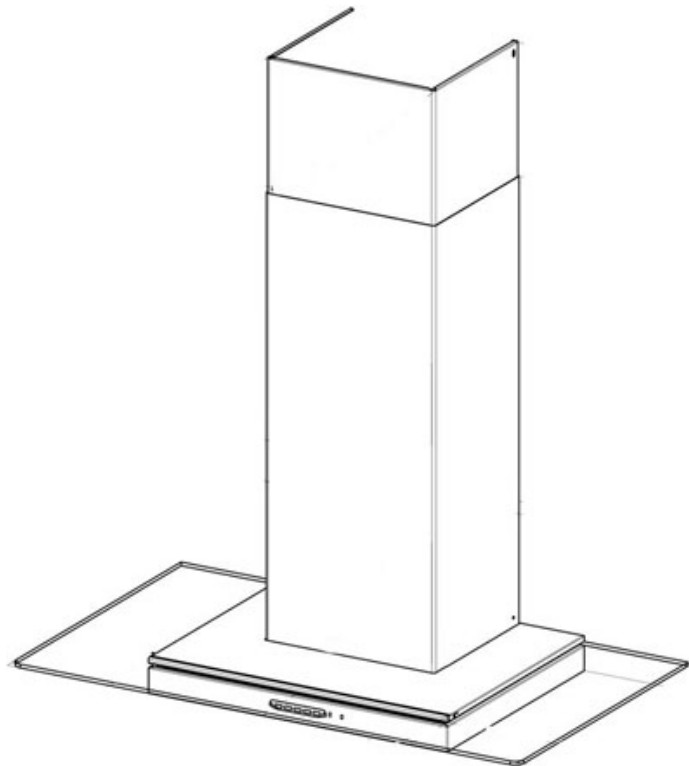
# HANDBOOK

HOOD FGL 9016XS 9925186 630004861

HOOD FGL 6016XS 9925185 630004860

UPDATED JUNE 2007

KITCHEN  
SYSTEMS

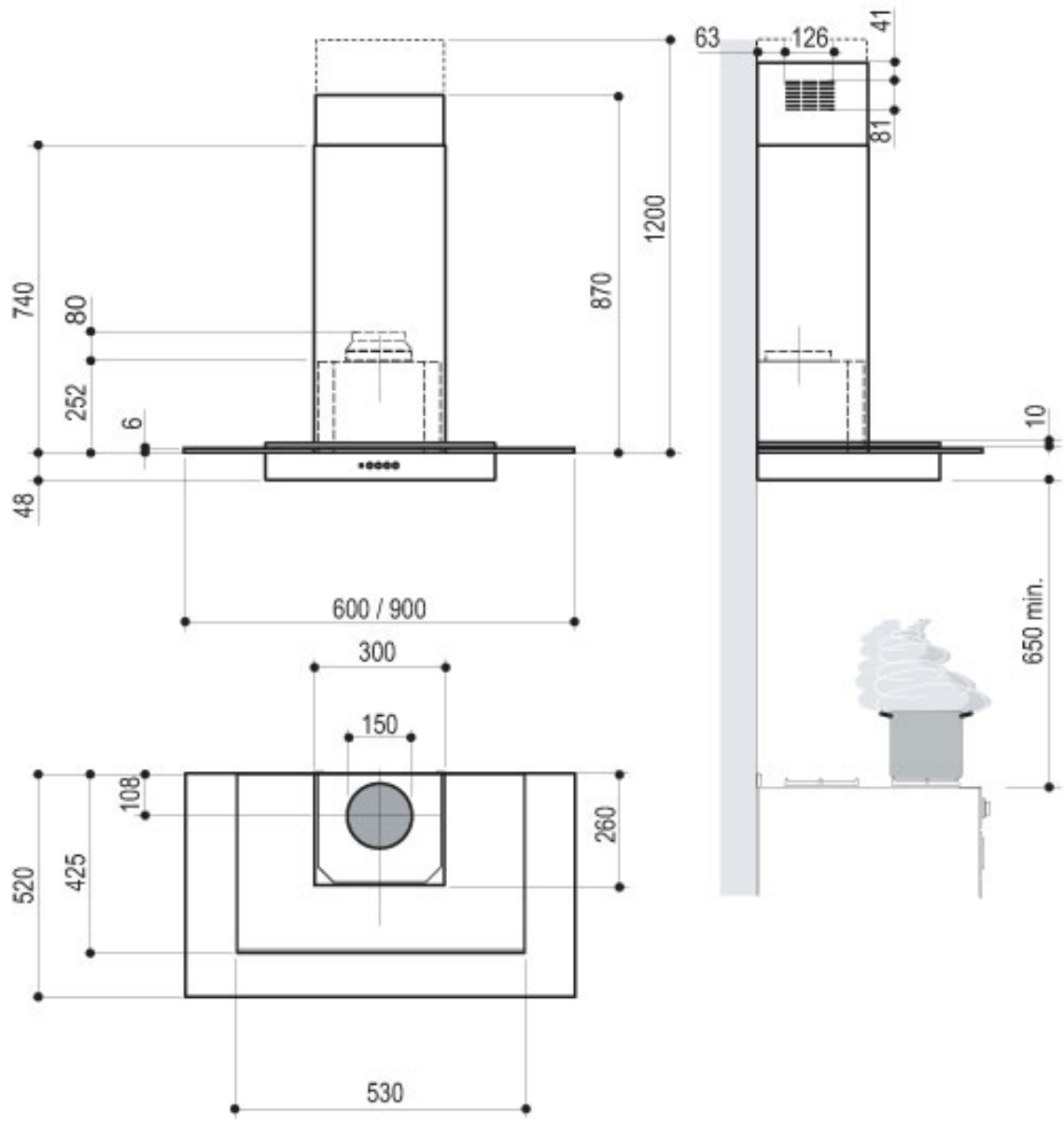


MOTOR NR 01 POWER INPUT : 190 W  
 SPEED : 3+INTENSIVE  
 LIGHTING : 20 W X2 HALOGEN LAMPS  
 TOTAL POWER : 230 W  
 FLOW RATE (FREE DELIVERY) : 640 M3/H  
 FLOW RATE (IEC 61591) 600/520 M3/H  
 SOUND POWER (IEC 60704-2-13) 67  
 INPUT VOLTAGE : 230V 50 HZ  
 EXIT DIAMETER 150 MM  
 PRESSURE MAX 280 PA  
 CONTROLS : SPEED CONTROL

**CONTENTS:**

DRAWING PAGE 2  
 TECHNICAL DATA PAGE 3  
 ELECTRICAL CONNECTION PAGE 4  
 METAL GREASE FILTERS PAGE 4  
 CONTROLS HOW IT WORKS PAGE 4  
 CHARCOAL FILTER PAGE 5

SUBSTITUTION OF THE CHARCOAL FILTER PAGE 5  
 CHANGING LAMP 20 W –GREASE FILTERS PAGE 6  
 LIST SPARE PARTS PAGE 7  
 EXPLODED VIEW PAGE 13  
 WIRING DIAGRAM PAGE 18



*Model*

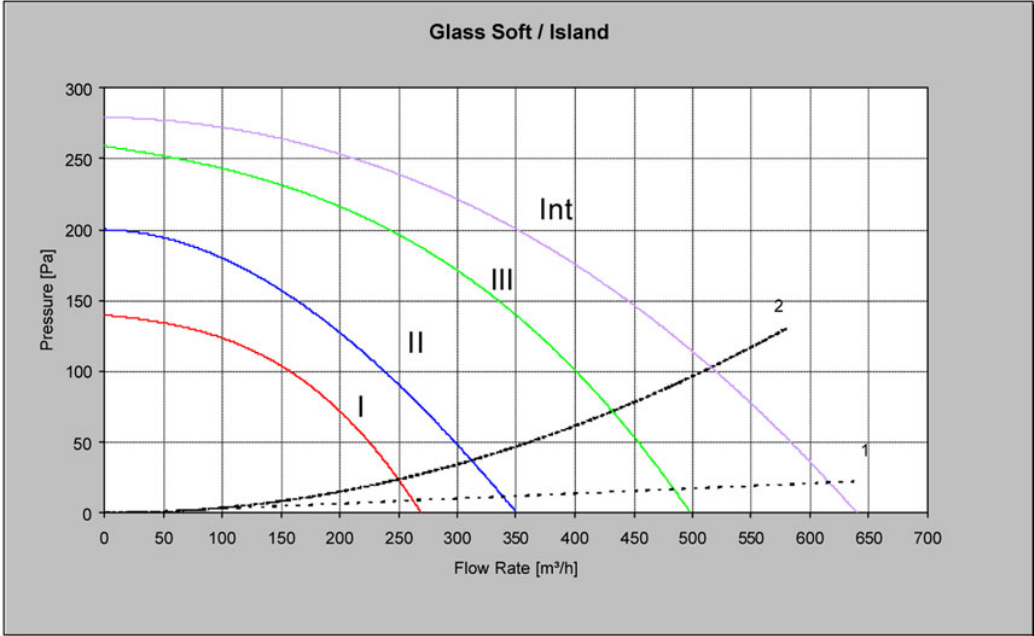
# Glass Soft / Island

Motor: 8/35 4V  
 Input Voltage : 230V - 50Hz  
 Exit diameter:  $\phi = 150\text{mm}$

FGL6016 FGL9016

**Note:** Speed control by  $\mu$  CS Electronic; Hi-Lo Blower  
 1 (200 m<sup>3</sup>/h, 5 Pa) Resistance curve according to IEC 61591  
 2 (200 m<sup>3</sup>/h, 15 Pa) Resistance curve according to IEC 61591

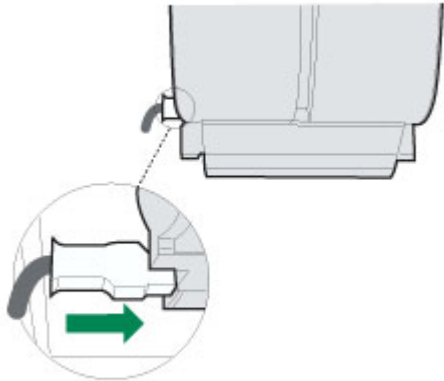
SPEED	FLOW RATE <i>Free delivery</i> [m <sup>3</sup> /h]	FLOW RATE <i>IEC 61591</i> [m <sup>3</sup> /h]	PRESSURE <i>Maximum</i> [Pa]	POWER <i>INPUT</i> [W]	SOUND POWER <i>IEC 60704-2-13</i> [dB(A)]
I	270	260/250	140	90	51
II	350	330/310	200	115	55
III	500	470/430	260	145	63
Int	640	600/520	280	190	67



## ELECTRICAL CONNECTION •

Connect the hood to the mains through a two-pole switch having a contact gap of at least 3 mm.

- Remove the grease filters being sure that the connector of the feeding cable is correctly inserted in the socket placed on the side of the fan.



### FUNCTION

T1 ON-OFF MOTOR Switches the hood motor on and off. The latest selected speed appears on the display.

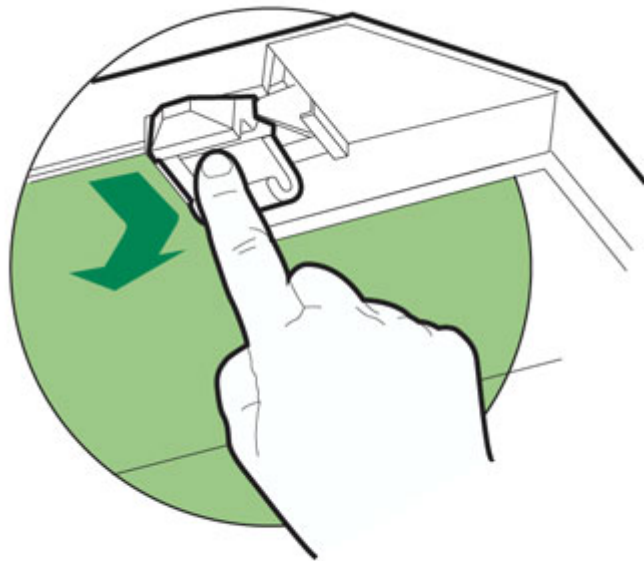
T2 SPEED - Decreases the suction speed: V3 →» V2 →» V1

T3 SPEED + Increases the suction speed: V1 →» V2 →» V3

T4 INTENSIVE SPEED Activates the intensive speed from any previously selected speed. The intensive speed can be activated even when the motor is OFF. By pressing the same touch control once again or by switching off the motor this function can be deactivated. Intensive speed cannot be activated when the delay function is on. Intensive speed has been timed at 10 minutes: H appears on the display and a spot down on the right side flashes once a second. After 10 minutes the system activates automatically the latest selected speed.

T5 DELAY Activates and deactivates the delayed shutdown of the hood (motor + lighting) at 30 minutes: the selected speed of the hood appears on the display and a spot down on the right side flashes once a second. By pressing the same touch control once again or by switching off the motor delay function can be deactivated.

L LIGHTING Turns light on and off.



- Remove the metal grease filters.
- Remove the charcoal filter as indicated in the picture.
- Place the filter again into its seat.
- Place again the metal grease filters into their place.

### Charcoal filter (recycling version)

This filter cannot be washed or regenerated. It must be replaced when the C appears on the display or at least once every 4 months.

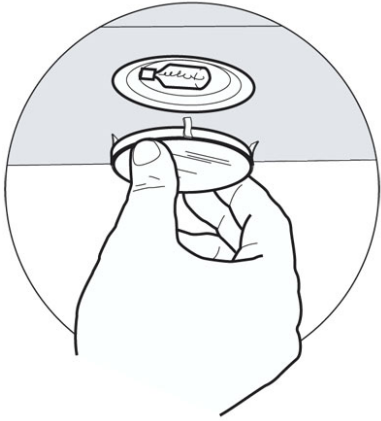
The filter saturation alarm has to be activated already before. Activation of the alarm signal • In the recycling version hoods the filter saturation alarm must be activated during the installation or later.

- Switch off the hood and the lights.
- Press the E-key for about 5 seconds until the last two segments of the motor LEDs are lit on the display.
- By releasing the E-key the clock icon starts to flash.
- Within 3 seconds press the D-key to activate/deactivate charcoal filter saturation alarm.
- C-symbol lit - charcoal filter saturation alarm ACTIVATED. • C-symbol unlit - charcoal filter saturation alarm DEACTIVATED.

### SUBSTITUTION OF THE CHARCOAL FILTER

Alarm reset

- Switch off the motor and the lighting system.
- Press the G-key for at least 2 seconds. Substitution of the filter
- Open the confort panel.



#### **LIGHT REPLACEMENT 20 W halogen light.**

- Remove the snap-on lamp cover by levering it from under the metal ring, supporting it with one hand.
- Remove the halogen lamp from the lamp holder by pulling gently.
- Replace the lamp with a new one of the same type, making sure that you insert the two pins properly into the housings on the lamp holder.
- Replace the snap-on lamp cover.

#### **CLEANING METAL SELF- SUPPORTING GREASE FILTERS •**

The filters must be cleaned every 2 months of operation, or more frequently for particularly heavy usage, and can be washed in a dishwasher.

- Remove the filters one at a time holding them up with one hand and pulling the handle downwards with the other hand at the same time.
- Wash the filters, taking care not to bend them. Allow them to dry before refitting.
- When refitting the filters, make sure that the handle is visible on the outside.

# FGL 6016XS 9925185 630004860

POS	SERVICE CODE	FAN CODE	DESCRIPTION	DESCRIZIONE	NR
1	1960327	1.330.017.023	SELF SUPPORTING FILTER SIFIM X (FRANKE)	FILTRO AUTOPORTANTE SIFIM X (FRANKE)	2
2	1960222	1.330.016.970	GRILLE HINGE PIN D.510-050	PERNO ROTAZIONE GRIGLIA	2
3	1960434	1.330.017.089	SPOTLIGHT SUPPORT	SUPPORTO FARETTI X PIEGATO	1
5	1961123	1.330.017.586	MAIN BODY X K03 W/GLASS 60	SCOCCA MODA LUMIA/2 EL K03 X 60 C/VETRO	1
6	1961124	1.330.017.564	SCATOLA IMBALLO 600	COPERCHIO SUP.C/LUMIN.X PIEGATO(MODA/2)	1
7	1961125	1.330.017.604	VITE 2,2X7,5 TSP TORX SPU INOX	VITE 2,2X7,5 TSP TORX SPU INOX	1
8	1961126	1.330.017.599	GROUP ELECTROLIGHTS INOX	GRUPPO ELETTROLUMINESCENZA INOX-TRASP.	1
10	1961127	1.330.017.655	INVERTER BOX COVER	COPERCHIO SCATOLA INVERTER	1
11	1986128	1.330.017.673	INVERTER F. ELECTROLUMINESCENT L.	INVERTER 12V PER ELETTROLUMINESCENZA	1
12	1961129	1.330.017.656	INVERTER BOX	SCATOLA INVERTER	1
13	1960220	1.330.016.969	CABLE INLET GROMET D13	PASSACAVO GOMMA D13 ART.M11V	1
14	1960024	1.330.016.853	FEMALE PLUG BOX 2 WAYS	SCATOLA PORTAFEMMINE 2 VIE	1
15	1960025	1.330.016.854	MALE PLUG BOX 2 WAYS	SCATOLA PORTAMASCHI 2 VIE	2
16	1960387	1.330.017.060	BUILT IN SPOTLIGHT S1000	FARETTO AD INCASSO S1000 20W C/FASTON	2
100	1960712	1.330.017.573	CONTROL GROUP	GRUPPO COM.K-CS/M-CS 6-1D ORIZ.FRANKE	1
101	1960128	1.330.017.646	CONTROL BOARD GLASS FRANKE PC	VETRINO COMANDI FRANKE PC	1
102	1960627	1.330.017.041	CONTROL BOX	SCATOLA COM.6-1 D.FRANKE GM S.M-CS OR	1
103	1960628	1.330.016.888	SCHEDA TASTIERA 6-1 DIGIT ROSSI ORIZZ.	SCHEDA TASTIERA 6-1 DIGIT ROSSI ORIZZ.	1
104	1960129	1.330.016.928	COMMANDS COVER PP-V2	COPERCHIO COMANDI PA 6.8 V0	1
105	1961130		STAFFA FISS.COMANDI ELN RETT.ZN PIEGATA	STAFFA FISS.COMANDI ELN RETT.ZN PIEGATA	1
106	1960629	1.330.016.885	FLAT COMANDI 60 6 VIE L=900	FLAT COMANDI 60 6 VIE L=900 C/CONNETTORI	1
107	1960032	1.330.016.861	9WAYS MALE CONNECTOR (V2)	CONNETTORE MASCHIO 9 VIE V2	1
108	1960104	1.330.016.906	CABLE CLAMP (HI-LO)	BLOCCACAVO (HI-LO)	1
300	1960630	1.330.017.578	POWER PACK HI-LO HIP 4V	GRUPPO M.HI-LO HIP 4V CLII	1
301	1960142	1.330.016.937	ELECTRIC COVER (V2)	COPERCHIO IMPIANTO ELETTRICO (V2)	1
303	1960195	1.330.016.956	CONDENSER BLOCKING	FERMACONDENSATORE (V0)	1
304	1960631	1.330.016.892	MOTOR ASSEMBLY HI-LO HIP	CONDENSATORE 6,3MF 400V 10000 ORE	1
305	1960031	1.330.016.860	CONNECTOR STS 240 A1 (CLII)	CONNETTORE STS 230 A1 SPINA 2P	1
306	1960033	1.330.016.862	FEMALE 9 WAYS CONNECTOR (V2)	CONNETTORE FEMMINA 9 VIE V2	1
307	1960182	1.330.016.951	LOWER DIFFUSER (V2)	DIFFUSORE INFERIORE (V2)	1
308	1960106	1.330.016.908	MOTOR CABLE CLAMP	BLOCCACAVO MOTORE (V2)	1
309	1960632	1.330.016.837	MOTORE 8/35K-A 4V 220-240	MOTORE 8/35K-A 4V 220-240	1
310	1960206	1.330.016.963	SX D140 M8 ROTOR (V2)	ASS.GIRANTE SX D140 M8 (V2)	1
311	1960181	1.330.016.950	UPPER DIFFUSER (V2)	DIFFUSORE SUPERIORE (V2)	1

POS	SERVICE CODE	FAN CODE	DESCRIPTION	DESCRIZIONE	NR
313	1960588	1.330.017.521	MOTOR SUPPORT	SUPPORTO MOTORE ZN M8	1
314	1960205	1.330.016.962	DX D140 M8 ROTOR (V2)	ASS.GIRANTE DX D140 M8 (V2)	1
315	1960168	1.330.016.946	IMPELLER SECURING-NUT	DADO GIRANTE	2
316	1960101	1.330.016.903	AIR-INLET RIGHT FLANGE (V2)	FLANGIA ENTRATA ARIA DX (V2)	1
320	1960100	1.330.016.902	AIR-INLET LEFT FLANGE (V2)	FLANGIA ENTRATA ARIA SX (V2)	1
324	1960303	1.330.016.999	SCREW 4x9	VITE 4X9 AFLLS TMT D14 FR PZ PMT	2
328	1960304	1.330.017.000	MOTOR FIXING SCREW	VITE FISSAGGIO MOTORE 8	3
329	1960105	1.330.016.907	MOTOR RUBBER	GOMMINO MOTORE 8c	3
501	1960412	1.330.017.078	UPPER CHIMNEY X F470	CAMINO SUPERIORE RETT.X F470 PIEGATO	1
502	1960566	1.330.017.166	UPPER CHIMNEY FIXING BRACKET	STAFFA FISSAGGIO CAMINO SUP.ZN PIEGATA	2
503	1961078		BENT BRACKET ZN	SUPPORTO RACC.FILTRANTE ZN	1
504	1960243	1.330.016.976	FILTERING CONNECTION(DIVERTER)	RACCORDO FILTRANTE (UP) (V2)	1
505	1960171	1.330.016.948	SPACER CONNECTION FOR RECIRCULATING	DISTANZIALE RACC.FILT.DISASS.(PARETE)	2
508	1960200	1.330.016.959	REDUCTION FLANGE 150-120 BK	FLANGIA RIDUZIONE 150-120 BK	1
509	1960346	1.330.017.582	CAMINO INFERIORE RETT.X A745 S.FRANKE	CAMINO INFERIORE RETT.X A745 S.FRANKE	1
509	1961131	1.330.017.034	LOWER CHIMNEY X A545	CAMINO INFERIORE RETT.X A545 S.FRANKE	1
602	1960568	1.330.017.168	DIFFUSER BRACKET	STAFFA DIFFUSORE P/H.E-CUBE ZN PIEGATA	1
603	1960218	1.330.016.967	PARTICULAR CABLE GUIDE	PARTICOLARE PASSACAVO (V2)	2
604	1960166	1.330.016.944	CAPTIVATED NUT 5004-A 4M	DADO IN GABBIA Q 404-08 M4	1
606	1960407	1.330.017.073	FIXING KIT	FISSAGGIO CAPPA ASSIEMATO	2
607	1960256	1.330.016.987	PLUG S8	TASSELLO S8 C FISCHER 51049	2
608	1960324	1.330.017.014	ZINC PLATED SCREW	VITE ZINCATA M4X40 TC CACC.	1
609	1960254	1.330.017.611	CABLE CLAMP	STAFFA FERMACAVO	1
610	1960148	1.330.016.940	SUPPLY-CABLE COVER	COPERCHIO CAVO ALIMENTAZIONE (V2)	1
613	1960239	1.330.016.975	BODY FIXING KNOB	POMELLO FISSAGGIO SCOCCA	1
614	1960318	1.330.017.007	SCREW 4,2X44	VITE 4,2X44,4 T/T F.A PM ZN	2
615	1960432	1.330.017.087	DIFFUSER SUPPORT ASS.STILO/3 ZN	SUPPORTO DIFFUSORE ASS.STILO/3 ZN	1
616	1960258	1.330.016.989	CHARCOAL FILTER COVER	TAPPO C.A. (V2)	1
617	1960015	1.330.016.844	SUPPLY CABLE 2X0,75X2100 542+844 IT.PLUG	CAVO AL.2X0,75X2100 W 542+844 SP.ITALIA	1
618	1960250	1.330.016.982	MAIN CABLE BOX	SCATOLA IMPIANTO ELETTRICO (V2)	1
619	1960634	1.330.016.891	SCHEDA BASE M-CS M8 4V 220V 50/60HZ	SCHEDA BASE M-CS M8 4V 220V 50/60HZ	1
620	1960135	1.330.016.933	MAIN CABLE BOX COVER	COPERCHIO SCATOLA IMPIANTO ELETTR.(V2)	1
624	1960023	1.330.016.852	MALEHOLDER BOX	SCATOLA PORTAMASCHI 4 VIE	1
625	1960022	1.330.016.851	FEMALEHOLDER BOX	SCATOLA PORTAFEMMINE 4 VIE	1
626	1960047	1.330.016.872	TRANSFORMER TOR. 40VA (40 W)	TRASFORMATORE TOR.40W 230V D77-27H29 C/C	1
627	1960164	1.330.016.942	EXAGON SELF-LOCKING NUT (SERPRESS)	DADO ESAGONALE ART.SERPRESS 4M ZN	1

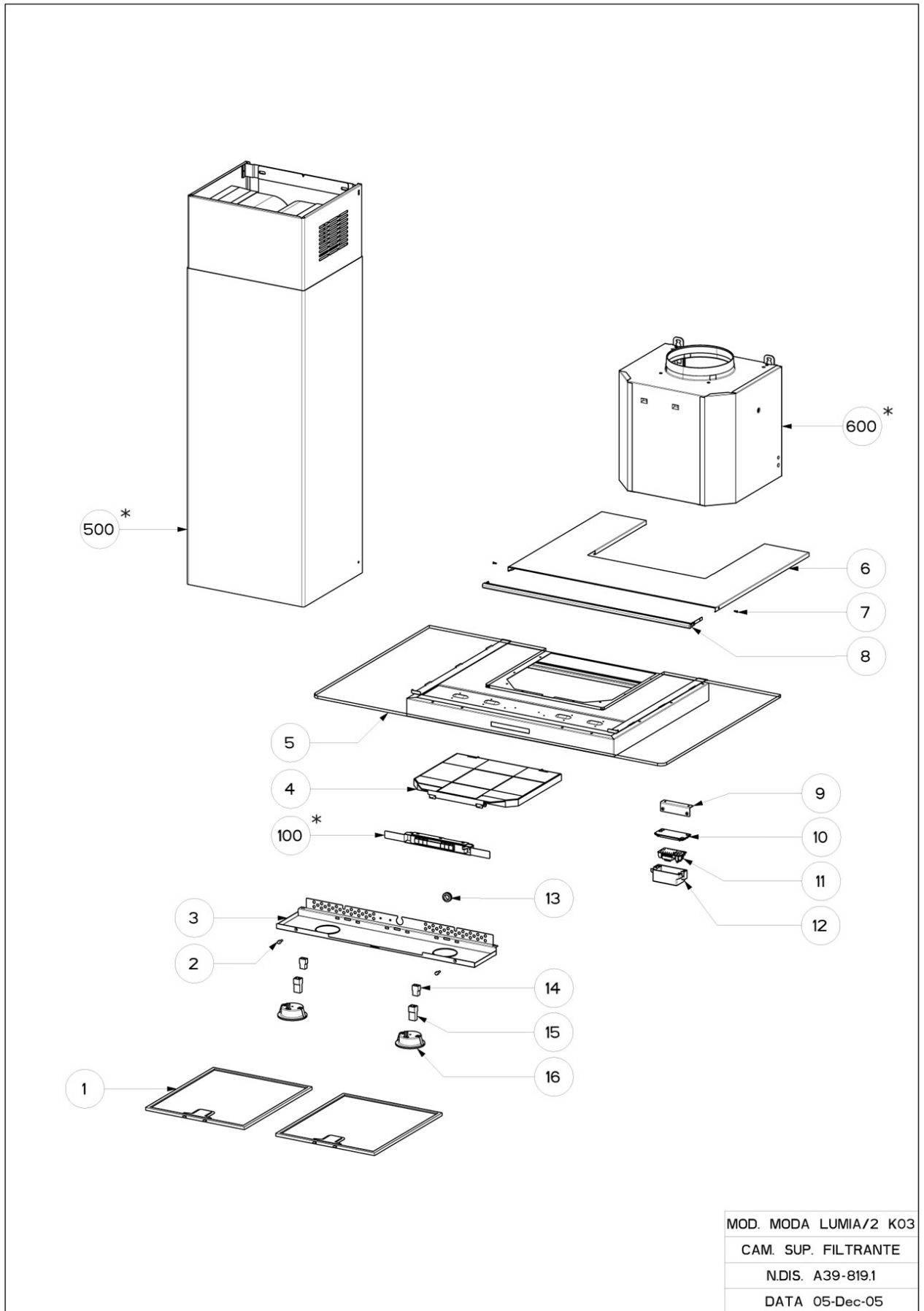
<b>POS</b>	<b>SERVICE CODE</b>	<b>FAN CODE</b>	<b>DESCRIPTION</b>	<b>DESCRIZIONE</b>	<b>NR</b>
628	1960294	1.330.016.996	TOROID SUPPORT	SUPPORTO TOROIDE 40-60W (V2)	1
629	1960302	1.330.016.998	WASHER 5X34 2MM	RONDELLA D.7,5X34 SP.2 MM	1
630	1960301	1.330.016.997	NUT	DADO AD ALETTE M4	1
632	1960103	1.330.016.905	REFINING COVER F. EASY CUBE	TAPPO RIFINITURA PER EASY CUBE	2
633	1960224	1.330.016.971	SECURING PIN D4,6X11	CLIP D4,6X11 ART.000670111 BK	1

# FGL 9016XS 9925186 630004861

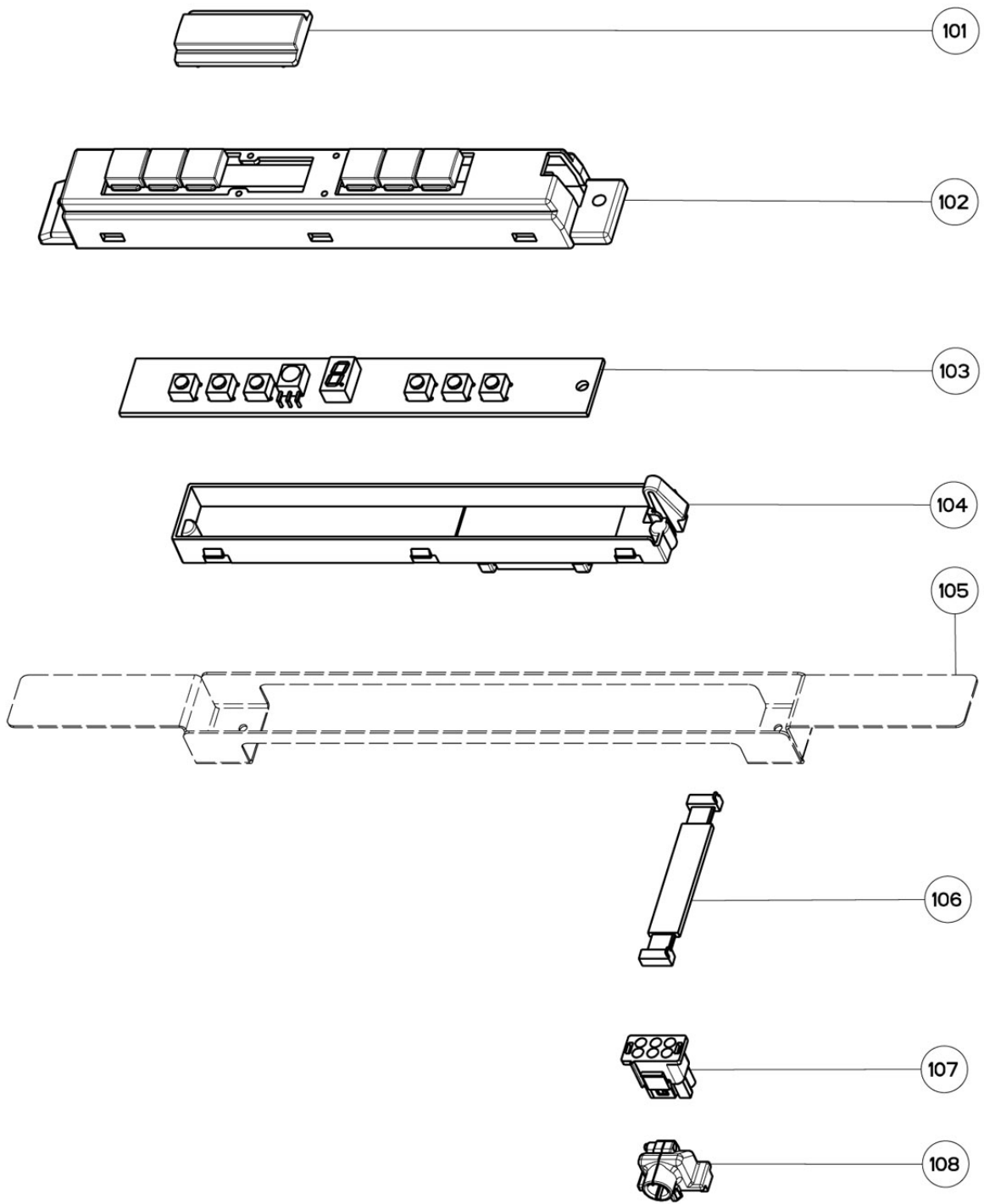
POS	SERVICE CODE	FAN CODE	DESCRIPTION	DESCRIZIONE	NR
1	1960327	1.330.017.023	SELF SUPPORTING FILTER SIFIM X (FRANKE)	FILTRO AUTOPORTANTE SIFIM X (FRANKE)	2
2	1960222	1.330.016.970	GRILLE HINGE PIN D.510-050	PERNO ROTAZIONE GRIGLIA	2
3	1960434	1.330.017.089	SPOTLIGHT SUPPORT	SUPPORTO FARETTI X PIEGATO	1
5	1961123		MAIN BODY X K03 W/GLASS 90	SCocca MODA LUMIA/2 EL K03 X 90 C/VETRO	1
6	1961124	1.330.017.564	LIGHTING COVER	COPERCHIO SUP.C/LUMIN.X PIEGATO(MODA/2)	1
7	1961125	1.330.017.604	VITE 2,2X7,5 TSP TORX SPU INOX	VITE 2,2X7,5 TSP TORX SPU INOX	1
8	1961126	1.330.017.599	GROUP ELECTROLIGHTS INOX	GRUPPO ELETTROLUMINESCENZA INOX-TRASP.	1
10	1961127	1.330.017.655	INVERTER BOX COVER	COPERCHIO SCATOLA INVERTER	1
11	1986128	1.330.017.673	INVERTER F. ELECTROLUMINESCENT L.	INVERTER 12V PER ELETTROLUMINESCENZA	1
12	1961129	1.330.017.656	INVERTER BOX	SCATOLA INVERTER	1
13	1960220	1.330.016.969	CABLE INLET GROMET D13	PASSACAVO GOMMA D13 ART.M11V	1
14	1960024	1.330.016.853	FEMALE PLUG BOX 2 WAYS	SCATOLA PORTAFEMMINE 2 VIE	1
15	1960025	1.330.016.854	MALE PLUG BOX 2 WAYS	SCATOLA PORTAMASCHI 2 VIE	2
16	1960387	1.330.017.060	BUILT IN SPOTLIGHT S1000	FARETTO AD INCASSO S1000 20W C/FASTON	2
100	1960712	1.330.017.573	CONTROL GROUP	GRUPPO COM.K-CS/M-CS 6-1D ORIZ.FRANKE	1
101	1960128	1.330.017.646	CONTROL BOARD GLASS FRANKE PC	VETRINO COMANDI FRANKE PC	1
102	1960627	1.330.017.041	CONTROL BOX	SCATOLA COM.6-1 D.FRANKE GM S.M-CS OR	1
103	1960628	1.330.016.888	SCHEDA TASTIERA 6-1 DIGIT ROSSI ORIZZ.	SCHEDA TASTIERA 6-1 DIGIT ROSSI ORIZZ.	1
104	1960129	1.330.016.928	COMMANDS COVER PP-V2	COPERCHIO COMANDI PA 6.8 V0	1
105	1961130		STAFFA FISS.COMANDI ELN RETT.ZN PIEGATA	STAFFA FISS.COMANDI ELN RETT.ZN PIEGATA	1
106	1960629	1.330.016.885	FLAT COMANDI 60 6 VIE L=900	FLAT COMANDI 60 6 VIE L=900 C/CONNETTORI	1
107	1960032	1.330.016.861	9WAYS MALE CONNECTOR (V2)	CONNETTORE MASCHIO 9 VIE V2	1
108	1960104	1.330.016.906	CABLE CLAMP (HI-LO)	BLOCCACAVO (HI-LO)	1
300	1960630	1.330.017.578	POWER PACK HI-LO HIP 4V	GRUPPO M.HI-LO HIP 4V CLII	1
301	1960142	1.330.016.937	ELECTRIC COVER (V2)	COPERCHIO IMPIANTO ELETTRICO (V2)	1
303	1960195	1.330.016.956	CONDENSER BLOCKING	FERMACONDENSATORE (V0)	1
304	1960631	1.330.016.892	MOTOR ASSEMBLY HI-LO HIP	CONDENSATORE 6,3MF 400V 10000 ORE	1
305	1960031	1.330.016.860	CONNECTOR STS 240 A1 (CLII)	CONNETTORE STS 230 A1 SPINA 2P	1
306	1960033	1.330.016.862	FEMALE 9 WAYS CONNECTOR (V2)	CONNETTORE FEMMINA 9 VIE V2	1
307	1960182	1.330.016.951	LOWER DIFFUSER (V2)	DIFFUSORE INFERIORE (V2)	1
308	1960106	1.330.016.908	MOTOR CABLE CLAMP	BLOCCACAVO MOTORE (V2)	1
309	1960632	1.330.016.837	MOTORE 8/35K-A 4V 220-240	MOTORE 8/35K-A 4V 220-240	1
310	1960206	1.330.016.963	SX D140 M8 ROTOR (V2)	ASS.GIRANTE SX D140 M8 (V2)	1

POS	SERVICE CODE	FAN CODE	DESCRIPTION	DESCRIZIONE	NR
311	1960181	1.330.016.950	UPPER DIFFUSER (V2)	DIFFUSORE SUPERIORE (V2)	1
313	1960588	1.330.017.521	MOTOR SUPPORT	SUPPORTO MOTORE ZN M8	1
314	1960205	1.330.016.962	DX D140 M8 ROTOR (V2)	ASS.GIRANTE DX D140 M8 (V2)	1
315	1960168	1.330.016.946	IMPELLER SECURING-NUT	DADO GIRANTE	2
316	1960101	1.330.016.903	AIR-INLET RIGHT FLANGE (V2)	FLANGIA ENTRATA ARIA DX (V2)	1
320	1960100	1.330.016.902	AIR-INLET LEFT FLANGE (V2)	FLANGIA ENTRATA ARIA SX (V2)	1
324	1960303	1.330.016.999	SCREW 4x9	VITE 4X9 AFLLS TMT D14 FR PZ PMT	2
328	1960304	1.330.017.000	MOTOR FIXING SCREW	VITE FISSAGGIO MOTORE 8	3
329	1960105	1.330.016.907	MOTOR RUBBER	GOMMINO MOTORE 8c	3
501	1960412	1.330.017.078	UPPER CHIMNEY X F470	CAMINO SUPERIORE RETT.X F470 PIEGATO	1
502	1960566	1.330.017.166	UPPER CHIMNEY FIXING BRACKET	STAFFA FISSAGGIO CAMINO SUP.ZN PIEGATA	2
503	1961078		BENT BRACKET ZN	SUPPORTO RACC.FILTRANTE ZN	1
504	1960243	1.330.016.976	FILTERING CONNECTION(DIVERTER)	RACCORDO FILTRANTE (UP) (V2)	1
505	1960171	1.330.016.948	SPACER CONNECTION FOR RECIRCULATING	DISTANZIALE RACC.FILT.DISASS.(PARETE)	2
508	1960200	1.330.016.959	REDUCTION FLANGE 150-120 BK	FLANGIA RIDUZIONE 150-120 BK	1
509	1961131	1.330.017.582	CAMINO INFERIORE RETT.X A745 S.FRANKE	CAMINO INFERIORE RETT.X A745 S.FRANKE	1
509	1960346	1.330.017.034	LOWER CHIMNEY X A545	CAMINO INFERIORE RETT.X A545 S.FRANKE	1
602	1960568	1.330.017.168	DIFFUSER BRACKET	STAFFA DIFFUSORE P/H.E-CUBE ZN PIEGATA	1
603	1960218	1.330.016.967	PARTICULAR CABLE GUIDE	PARTICOLARE PASSACAVO (V2)	2
604	1960166	1.330.016.944	CAPTIVATED NUT 5004-A 4M	DADO IN GABBIA Q 404-08 M4	1
606	1960407	1.330.017.073	FIXING KIT	FISSAGGIO CAPPА ASSIEMATO	2
607	1960256	1.330.016.987	PLUG S8	TASSELLO S8 C FISCHER 51049	2
608	1960324	1.330.017.014	ZINC PLATED SCREW	VITE ZINCATA M4X40 TC CACC.	1
609	1960254	1.330.017.611	CABLE CLAMP	STAFFA FERMACAVO	1
610	1960148	1.330.016.940	SUPPLY-CABLE COVER	COPERCHIO CAVO ALIMENTAZIONE (V2)	1
613	1960239	1.330.016.975	BODY FIXING KNOB	POMELLO FISSAGGIO SCOCCA	1
614	1960318	1.330.017.007	SCREW 4,2X44	VITE 4,2X44,4 T/T F.A PM ZN	2
615	1960432	1.330.017.087	DIFFUSER SUPPORT ASS.STILO/3 ZN	SUPPORTO DIFFUSORE ASS.STILO/3 ZN	1
616	1960258	1.330.016.989	CHARCOAL FILTER COVER	TAPPO C.A. (V2)	1
617	1960015	1.330.016.844	SUPPLY CABLE 2X0,75X2100 542+844 IT.PLUG	CAVO AL.2X0,75X2100 W 542+844 SP.ITALIA	1
618	1960250	1.330.016.982	MAIN CABLE BOX	SCATOLA IMPIANTO ELETTRICO (V2)	1
619	1960634	1.330.016.891	SCHEDA BASE M-CS M8 4V 220V 50/60HZ	SCHEDA BASE M-CS M8 4V 220V 50/60HZ	1
620	1960135	1.330.016.933	MAIN CABLE BOX COVER	COPERCHIO SCATOLA IMPIANTO ELETTR.(V2)	1
624	1960023	1.330.016.852	MALEHOLDER BOX	SCATOLA PORTAMASCHI 4 VIE	1
625	1960022	1.330.016.851	FEMALEHOLDER BOX	SCATOLA PORTAFEMMINE 4 VIE	1

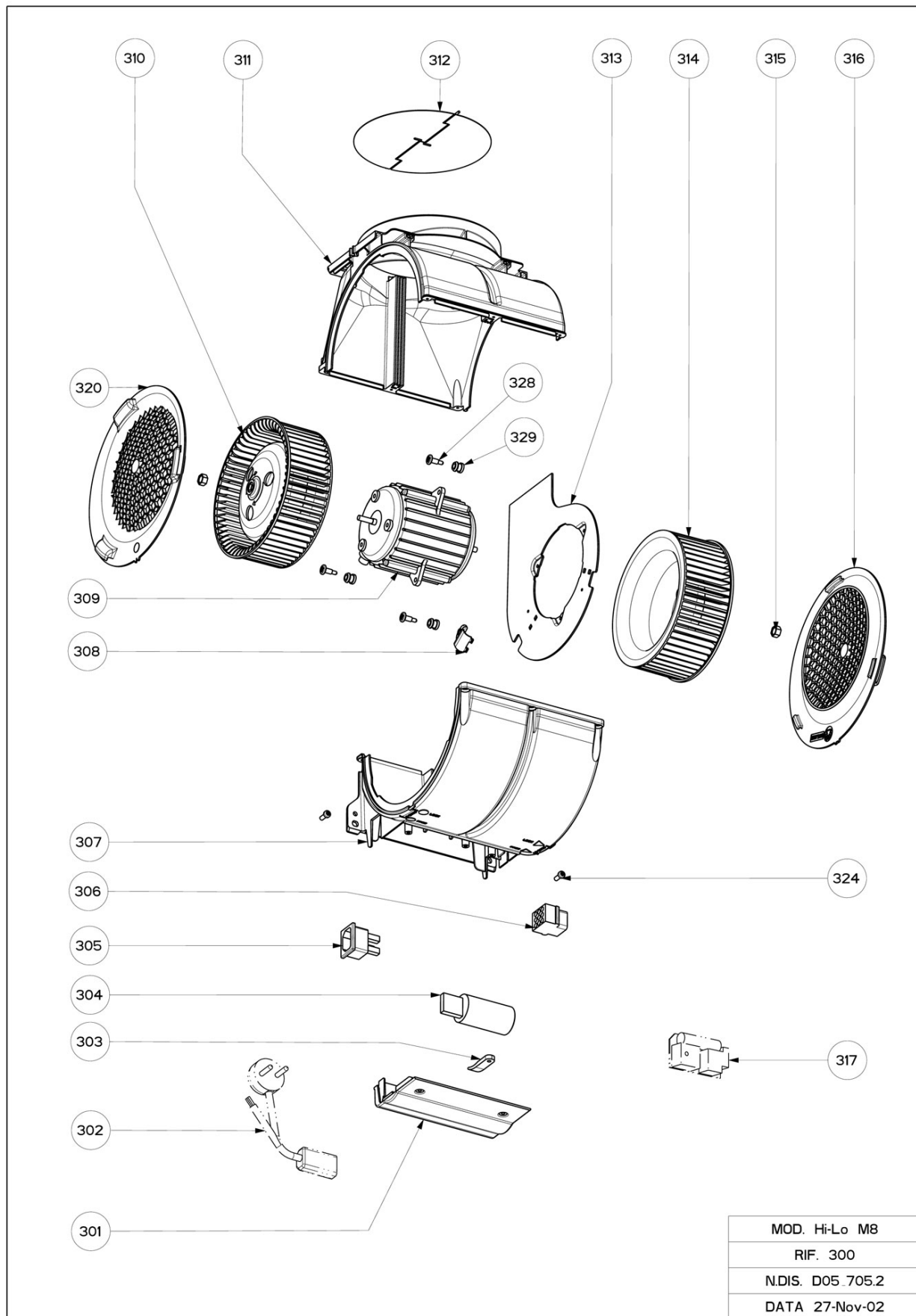
POS	SERVICE CODE	FAN CODE	DESCRIPTION	DESCRIZIONE	QUANTITA'
626	1960047	1.330.016.872	TRANSFORMER TOR. 40VA (40 W)	TRASFORMATORE TOR.40W 230V D77-27H29 C/C	1
627	1960164	1.330.016.942	EXAGON SELF-LOCKING NUT (SERPRESS)	DADO ESAGONALE ART.SERPRESS 4M ZN	1
628	1960294	1.330.016.996	TOROID SUPPORT	SUPPORTO TOROIDE 40-60W (V2)	1
629	1960302	1.330.016.998	WASHER 5X34 2MM	RONDELLA D.7,5X34 SP.2 MM	1
630	1960301	1.330.016.997	NUT	DADO AD ALETTE M4	1
632	1960103	1.330.016.905	REFINING COVER F. EASY CUBE	TAPPO RIFINITURA PER EASY CUBE	2
633	1960224	1.330.016.971	SECURING PIN D4,6X11	CLIP D4,6X11 ART.000670111 BK	1

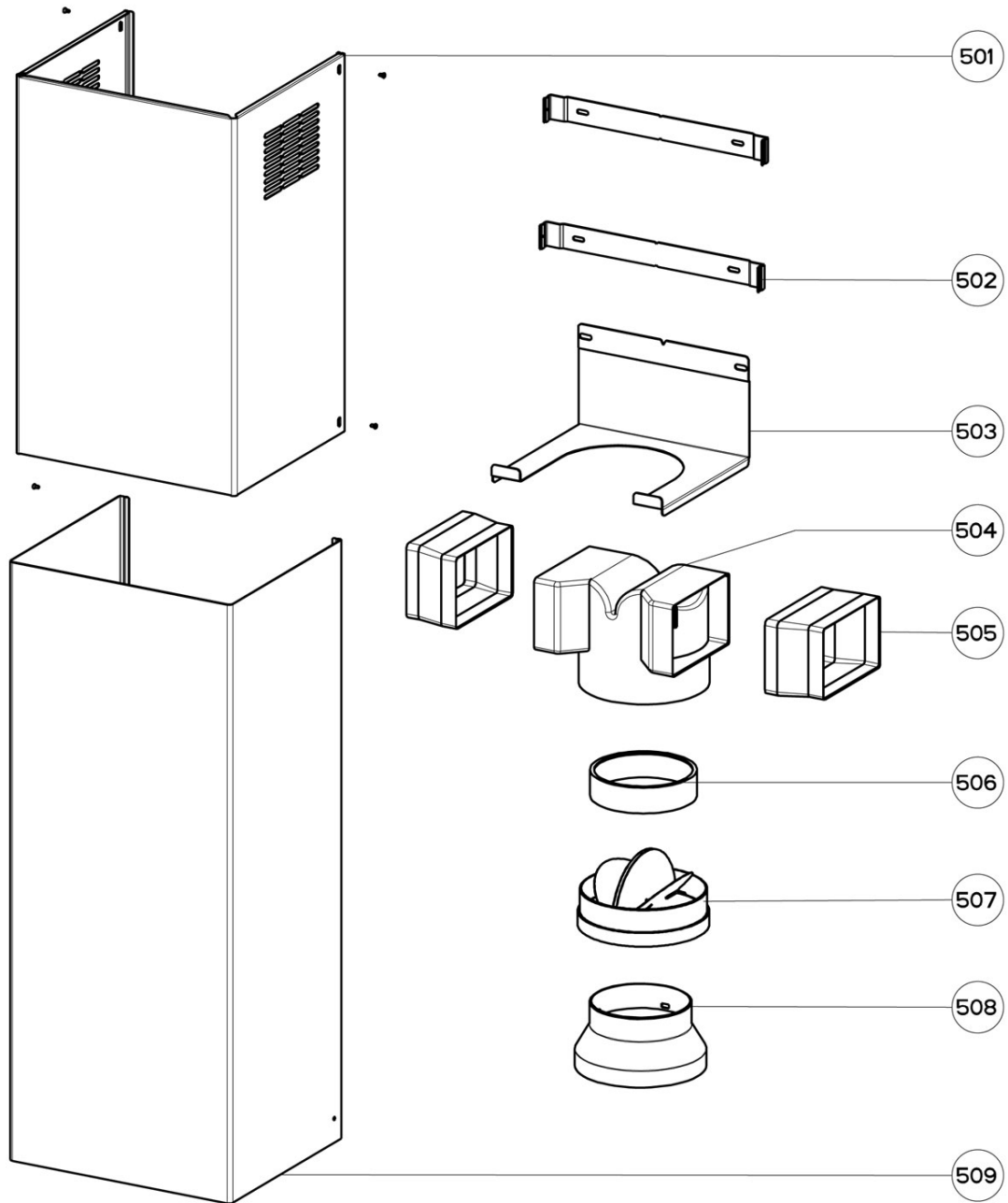


MOD. MODA LUMIA/2 K03
CAM. SUP. FILTRANTE
N.DIS. A39-819.1
DATA 05-Dec-05

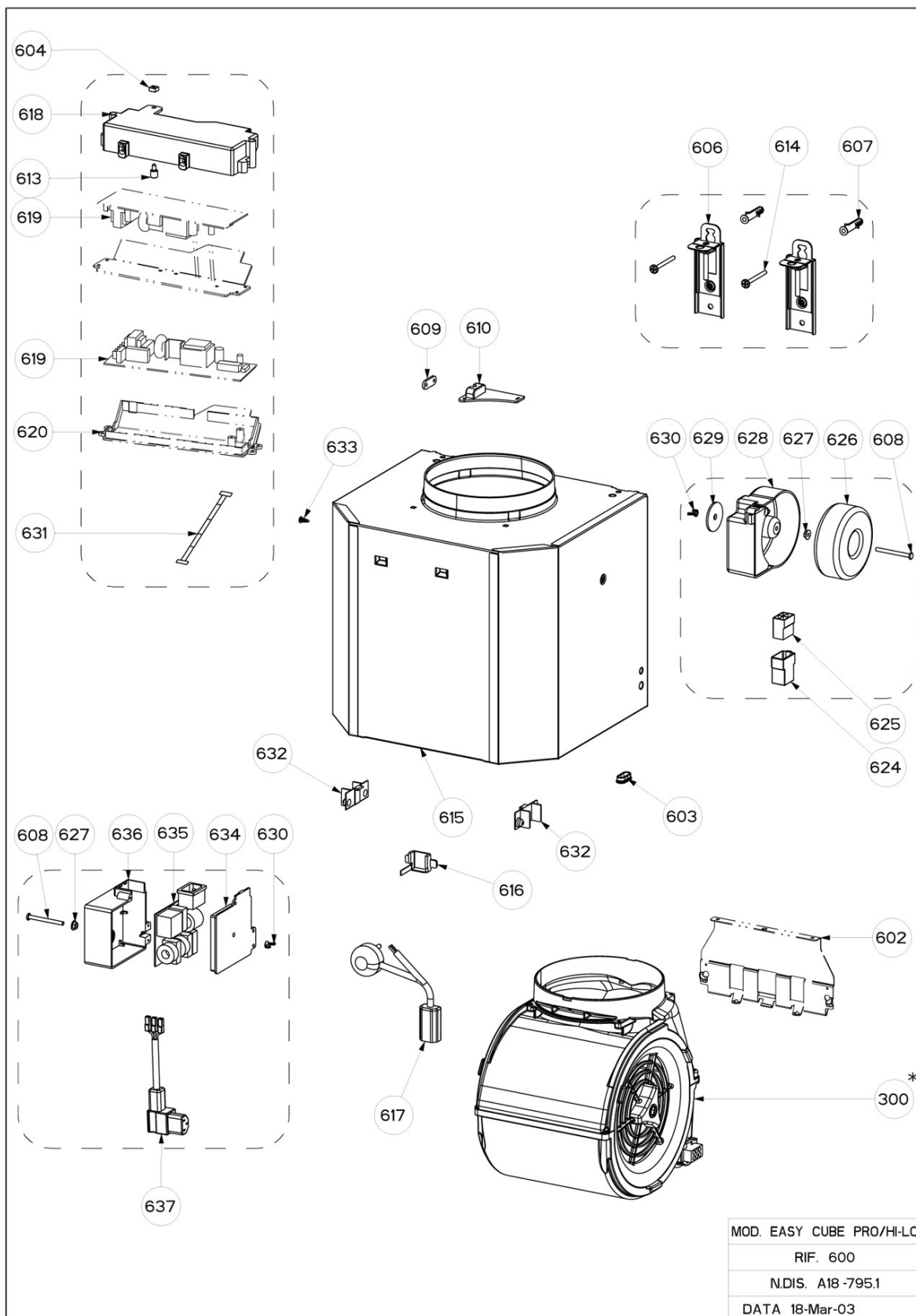


MOD. 6 TASTI 1 DGT ORIZZ. FRANKE
RIF. 100
N.DIS. K03-702.1
DATA 20-May-05

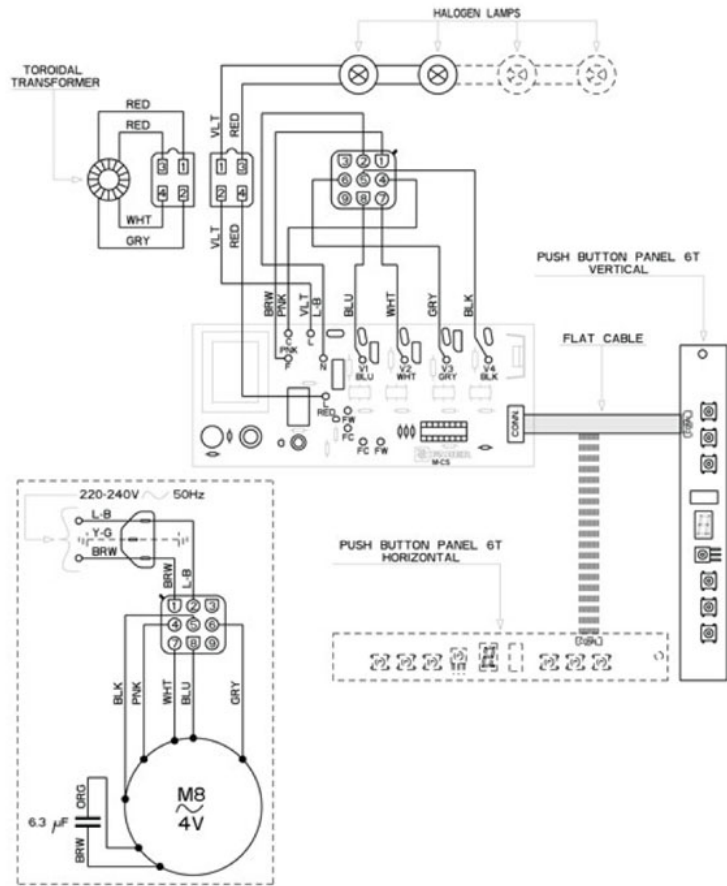




MOD. CAMINO SUP. FILTR.
RIF. 500
N.DIS. SC8.717.1
DATA 13-Oct-05 R.I-V.01

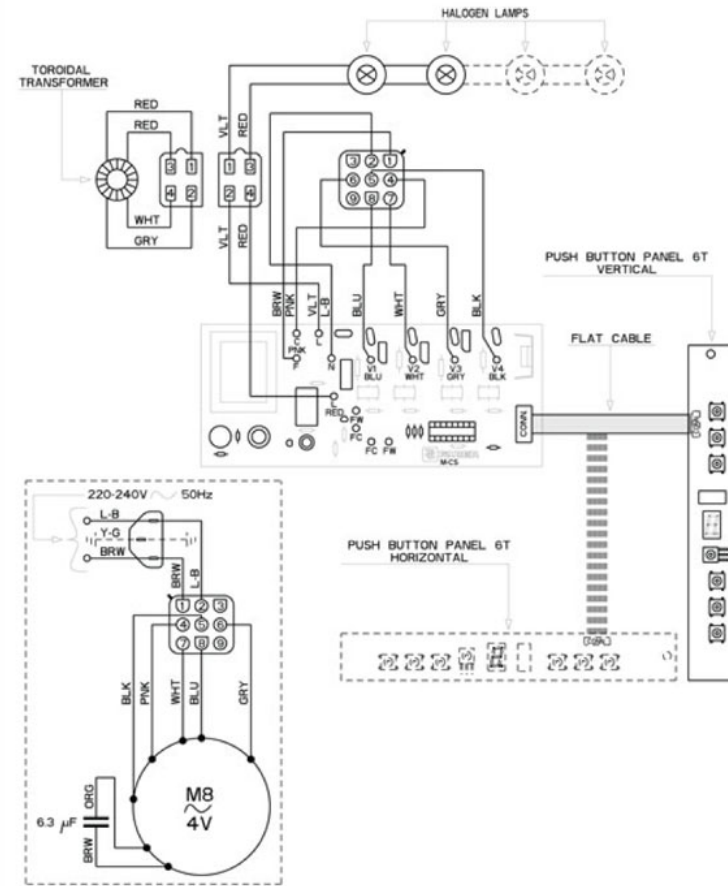


**I** Schema Elettrico  
**GB** Electric Diagram  
**F** Schéma Electrique  
**D** Schema Elektrisch  
**NL** Schema Electrisch  
**E** Esquema Eléctrico  
**PT** Esquema Eléctrico



436002935 SD8\_010 r-

**I** Schema Elettrico  
**GB** Electric Diagram  
**F** Schéma Electrique  
**D** Schema Elektrisch  
**NL** Schema Electrisch  
**E** Esquema Eléctrico  
**PT** Esquema Eléctrico



436002935 SD8\_010 r-