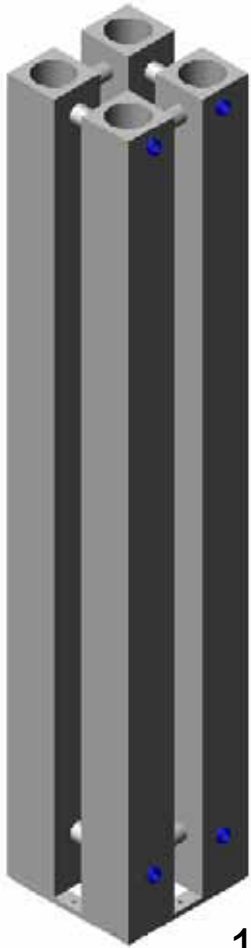
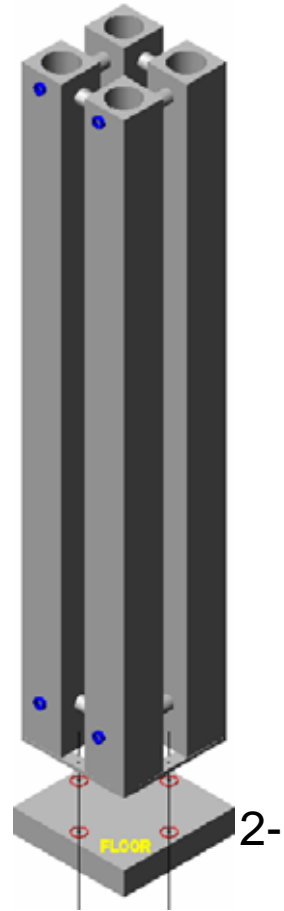


INSTALLATION GUIDE

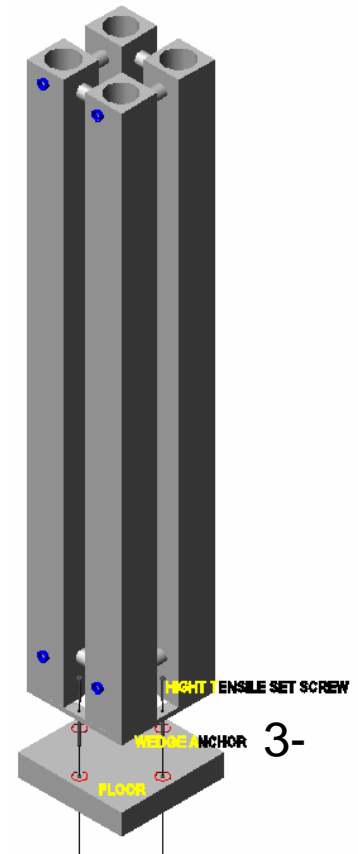


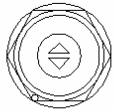
1-
a- Screw the inserts tightly – four pieces to floor.

2-
a- Hold the radiator in position on the floor.
b- Mark the floor in circle around the contact position of the inserts
c- Drill the floor in the centre of the four circles

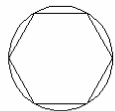


3-
a- Fit the wedge anchor and high tensile set screws into the holes that you already drilled (on the floor and the ceiling)

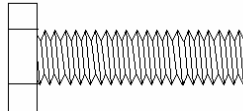




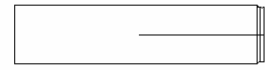
AIR VENT



BLIND TAP



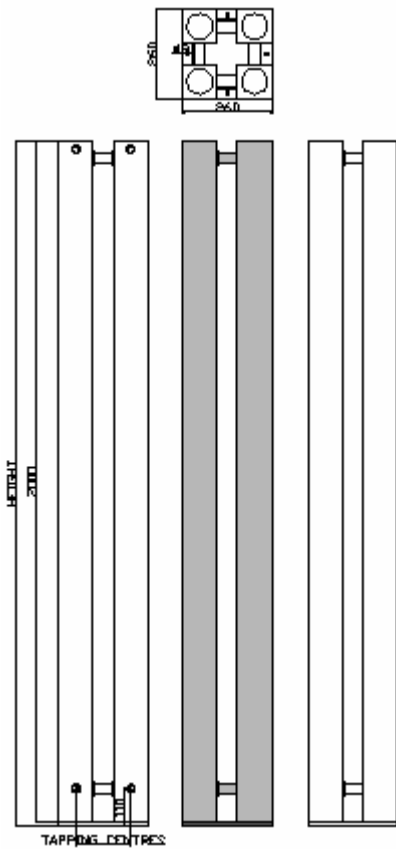
HIGH TENSILE SET SCREW



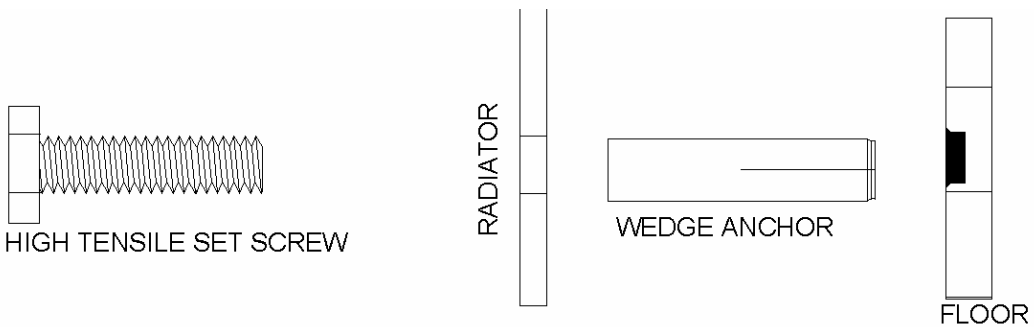
WEDGE ANCHOR

MODEL NAME	HEIGHT (mm)	LENGTH (mm)	WATER Content (LT)	WEIGHT (Kg)	TAPPING CENTRES (mm)	OUTPUT (BTU)	OUTPUT (Watt)
Quattro-15	1510	260	48,37	56,38	160	7.240	2120
Quattro-18	1810	260	58,06	67,50	160	8.688	2544
Quattro-20	2010	260	64,53	74,91	160	9.654	2827

Test pressure : 13 BAR
 Max. Working pressure : 10 BAR
 Heat output to EN 442



QUTTRO 20 - illustrated above



QUATTRO Radiators may only be installed vertical position as illustrated