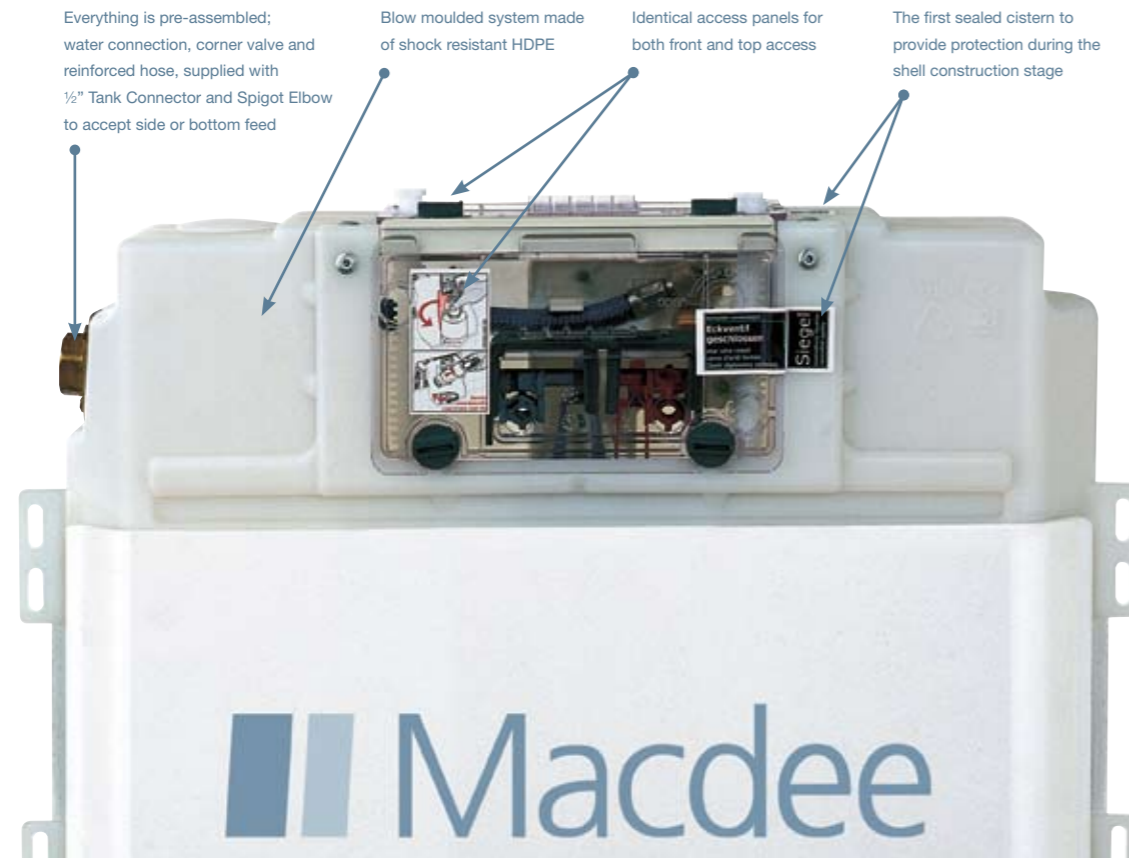


The heart of the cistern technology is the flush-mounted cistern. The cistern has the following features:



Everything is pre-assembled; water connection, corner valve and reinforced hose, supplied with 1/2" Tank Connector and Spigot Elbow to accept side or bottom feed

Blow moulded system made of shock resistant HDPE

Identical access panels for both front and top access

The first sealed cistern to provide protection during the shell construction stage

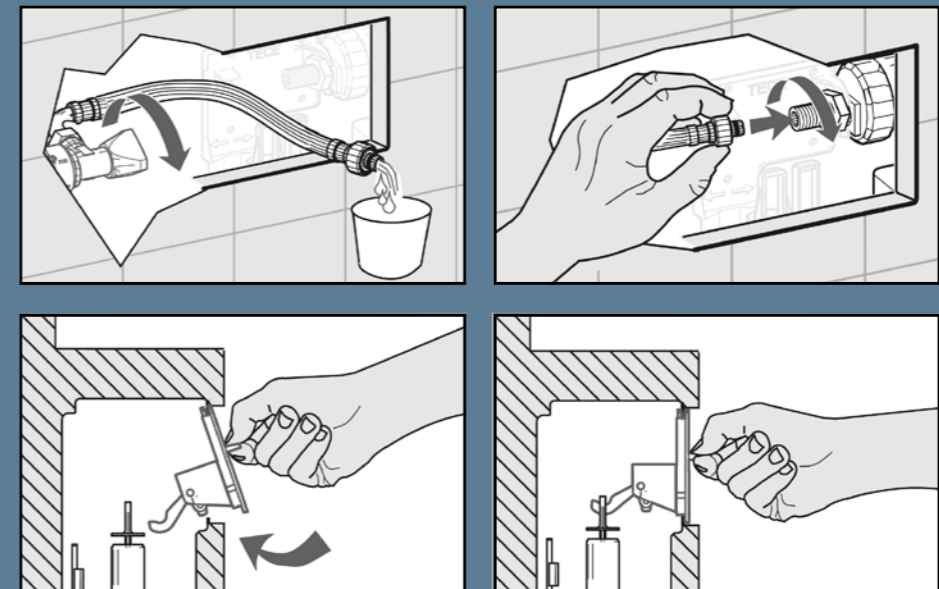
- Robust lever mechanics
- Pre-assembled
- Valve is checked before delivery
- 100% pressure-tested system tank
- Shockproof extruded tank in high-density polyethylene
- Standard filling valve
- Compatible with normal spare parts

The flush-mounted cistern corner valve is enclosed and pre-mounted. The cistern is sealed at works. If the seal is unbroken, the cistern is guaranteed to be clean and serviceable. A damaged seal can be caused by unauthorised opening of the cistern. In this case the internal cistern components should be checked.

Installation

The flush-mounted cistern can only be opened by breaking the seal on the splash protection. If the seal is undamaged when final installation is to be carried out, the interior is free of dirt and intact. A broken seal can be due to unauthorised access inside the cistern. In this case the components inside the cistern should be checked for function and cleanliness. The connection piping must have been sufficiently rinsed out before commissioning the flush-mounted cistern. To do this, the intake hose should be removed from the cistern and fixed without tools to the filling valve after rinsing.

One of the special flush-mounted cistern features is the flush button fixed to the splash protection. When the cistern is opened, the flush button can be removed completely. This means that there is sufficient space for working inside the cistern despite a small inspection opening. The levers are shaped so that they automatically fall into place when being reinserted.



Macdee cisterns are pre-assembled ex factory, so that they only have to be connected to the water pipes for fitting in the shell structure. They are fitted with a seal to prevent tampering.

An undamaged seal means

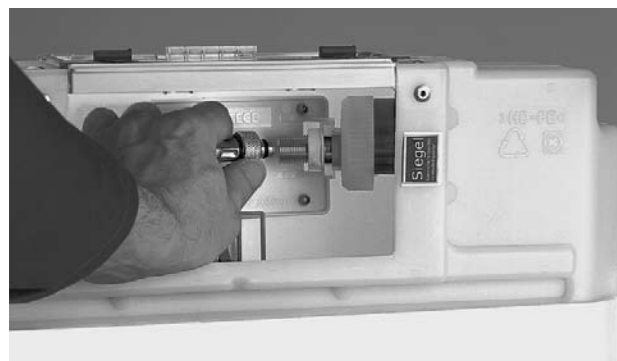
- The inside of the cistern is complete and clean
- The corner valve is closed, so the cistern does not have to be opened for pressure testing
- No unauthorised parties have opened the cistern



The push rods can be inserted quickly and accurately using the alignment shots



Easy to service: Despite the small push plate, the inlet and outlet valve can be fitted very easily and independently.



After the shell construction stage: The flexi pipe is attached to the plug connection in the inlet valve.



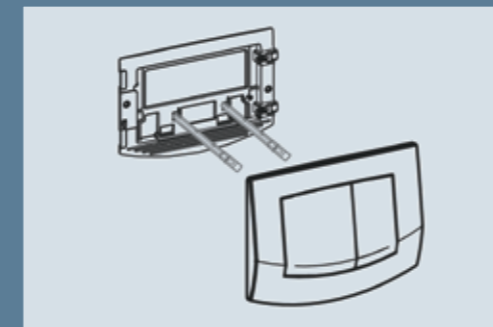
The protective plate is a compact unit consisting of the splash guard, lever mechanism and fixing device.

Macdee keeps everything simple

- The same flushing technology for all applications
- Stylish push plates for front or top installation
- Compatible with commercially available spare parts (standard inlet valve, bell gasket, etc)
- Sound-proofing tested pursuant to DIN 4109/AGI
- Dual flush plates available with white antibacterial / chrome gloss ABS or brushed stainless steel

The all rounder...a cistern for all seasons

Macdee's flush-mounted cistern is a multi-purpose standard unit. It can be used in a wide range of applications, even though it comes in only two model types with identical internals.



The WC tap

The WC tap is a completely new way of WC operation, which can be mounted exclusively on flush-mounted cisterns. It sets new standards with regard to operation and design. The technology used by the WC tap allows, for the first time, the selection of large or small flush quantities using a turning movement.

Dual flush technology

Depending on the flush operator used, flush-mounted cisterns offer single quantity or economic dual-quantity flushing. Single-quantity cisterns can be set to six or nine litre capacity. Dual flush technology allows a choice of 3/6 litres or 3/9 litres flush quantity.



Adjusting the flush quantity

The flush quantity is set using the drain valve only. The works setting for the larger flush quantity is six litres. Changes to the water level at the filling valve should not be made, because this can lead to incorrect functioning of the cistern.



WC taps are offered by various bathroom fitting manufacturers. They are part of the fitting or accessory series. The design shaping, which matches the fittings, allows uniform bathroom design without disturbing influences. WC taps are high-quality products made of metal. Replacing a WC tap with an Ambia flush operator is easily possible at any time. If the customer decides to change their system at a later date, this is no problem.