

Product Finish: Brushed nickel

Product code: AT1112
EAN13 barcode: 5060048380934



Note: the image shown may not reflect the product finish, chrome finish is typically depicted.

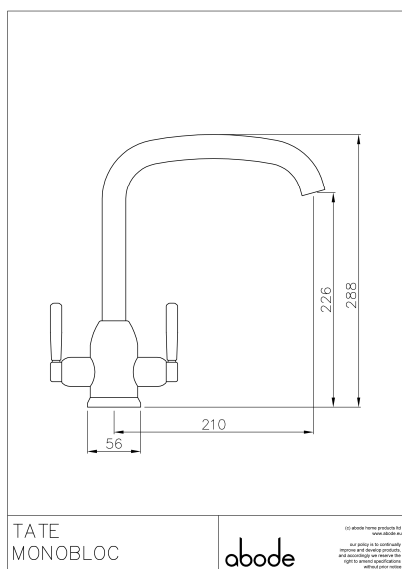
Product features:

- Elegant retro design form
- Quarter turn handle action for precise flow control
- Custom designed for lower to mid pressures
- Metal construction throughout
- Antisplash spout supplied as standard

Additional information / Parts included:

2.0mm & 2.5mm a/f Allen key, blue neoperl aerator adaptor included

Product dimensions:



- **Overall Height / projection:** 288 mm
- **Exit reach:** 210 mm
- **Exit height:** 226 mm
- **Centre distance(s):**

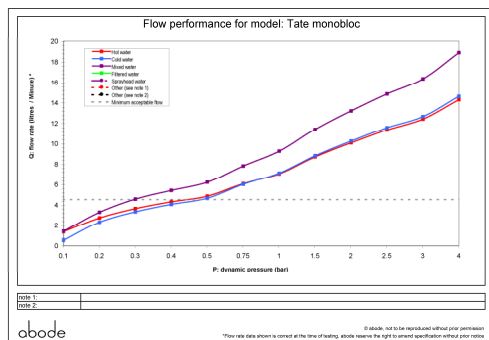
- **Base diameter(s):** 56 mm
- **Recommended hole diameter:** Ø 35 mm
- **Max. surface depth:** 40 mm

- **Spout diameter:** 26 mm
- **Spout aerator size:** 24mm

Packaged properties:

Box length: 420mm	Box depth: 75mm
Box width: 240mm	Units per outer: 5
Tap only weight: 1.97kg	Boxed weight: 2.54kg

Product flow characteristics:



- **Min / Max water pressure:** 0.30 / 5.5 bar
- **Recommended / Max water temperature:** 46°C / 70°C
- **Part G - Mixed flow rate at 3 bar (litres / min):** 16.33

- **Control valve type:** Ceramic disc QT
- **Product flow characteristics:** Single flow
- **Non return valve(s):** 1 x NRV supplied

- **Aerator type:** Plastic mesh diffuser
- **Accepts revolve / spray areator:** No
- **Spout connection method:** Grub screw

- **Tail pipe inlet / outlet size:** M12 / 15mm Ø
- **Inlet pipe type / length:** copper rigid tube / 245 mm

Care instructions summary:

- Clean the mixers and showers regularly as required, using soap, do not use any other cleaners.
- Regular cleaning will prevent the build up of lime scale and dirt
- After cleaning rinse thoroughly with clean water to remove any cleaner residue
- Residues of sink & worktop cleaners can also cause damage, so rinse with clean water after using, avoid contact with any abrasives

Warranty Summary (Full details available on request):

- Materials and workmanship defects warranted for 5 years
- Valves and working parts warranted for 5 years
- Surface warranty defects warranted for 1 year
- O-rings, hoses & gaskets warranted for 1 year