

**Product Overview:** 505mm ceramic wash basin.

- Features:**
- Non-handed – two tap hole basin, blanking plug supplied
  - Includes chrome waste trap as standard

- Benefits:**
- Easy installation
  - Choice of full or semi pedestal options available

**Product Specification:**

- 505mm (w) x 430mm (d)
- Sink waste hole 135mm
- Made from vitreous china



505mm wide Wash Basin with Semi Pedestal and Monobloc Mixer Tap

**Guarantee & Certification:**



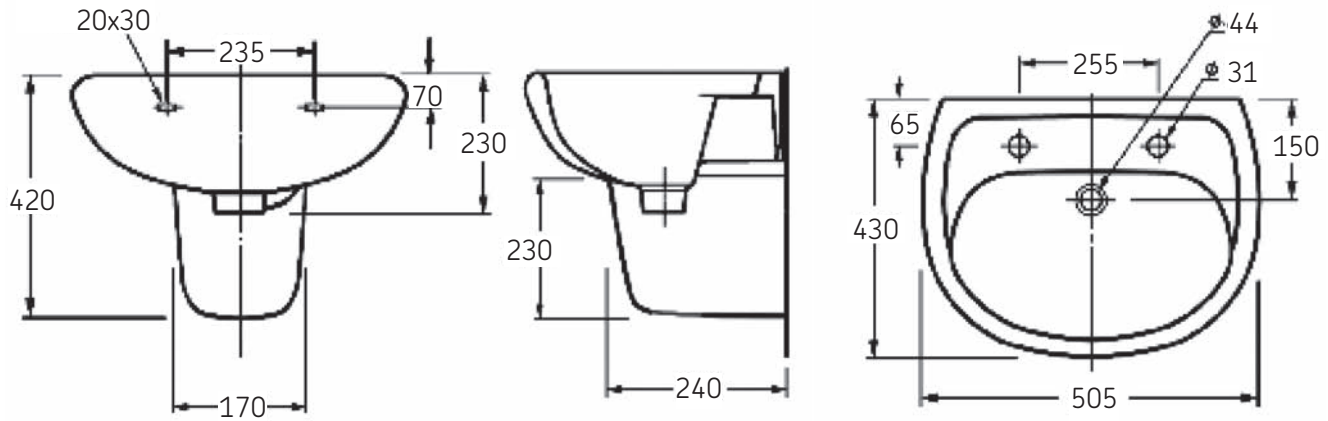
**Product Codes:**

Codes	Description
23127	2 tap hole wash basin 505mm wide with Semi Pedestal
23127-FP	2 tap hole wash basin 505mm wide with Full Pedestal

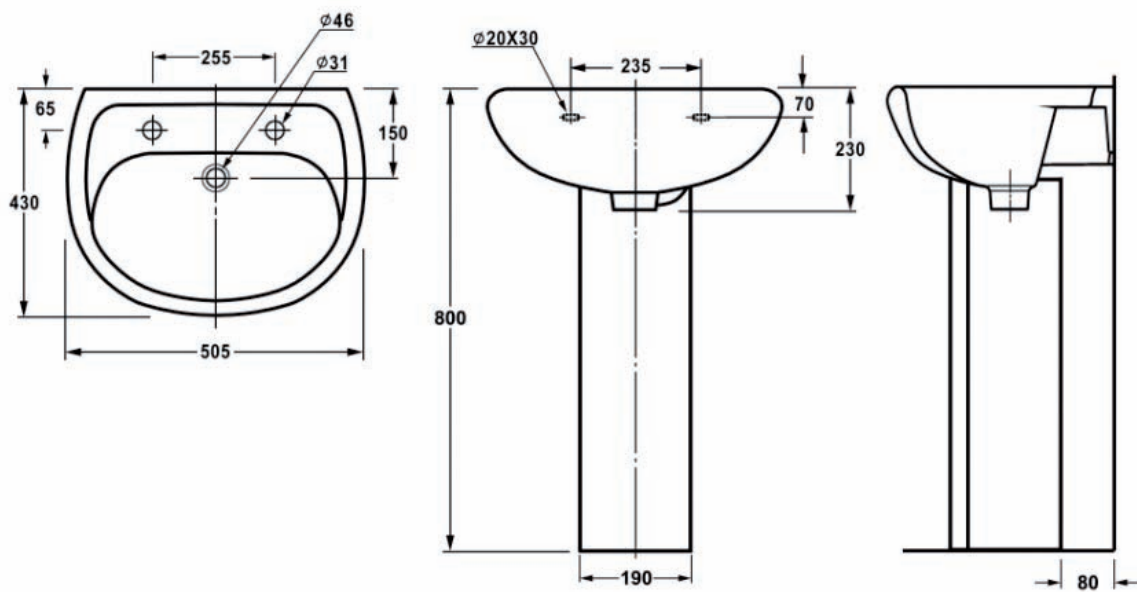
\* The lifetime warranty excludes normal wear and tear in general domestic applications. It applies only to products being installed for the first time and according to relevant local and national regulations.

## Dimensions:

**2 tap hole Wash Basin (505mm) wide with Semi Pedestal**



## 2 tap hole Wash Basin (505mm wide) with Full Pedestal



*N.B Dimensions in Millimetres (mm)*