

Product Overview: Duo and Duo Care shower screens provide a modern option and practical solutions for inclusive living.

- Benefits:**
- Stunning modern partially framed design
 - Half height and full height door designs suit environments where a carer is needed
 - Strong corner magnetic seals aid water retention
 - A special coating on the glass ensures it is easy to clean and keeps cleaner for longer
 - Can be fitted in most installations, tray, altro or wet floor to achieve an entry suited to the individual
 - Elegant round chrome handles or Duolinx handles finish the look

- Features:**
- Bright chrome finish
 - 6mm clear toughened safety glass
 - 20mm profile adjustment on each side
 - Four sizes available – non handed
 - Stay Clear protected glass

Product Specification:

Duo:

- Comprises of one full height split door and one fixed panel with Duolinx handles
- Full height is 1900mm high

Duo Care:

- Comprises of one half height bi-parting glass door and one fixed panel with small round knob handles
- Half height is 900mm high

Screen widths available:

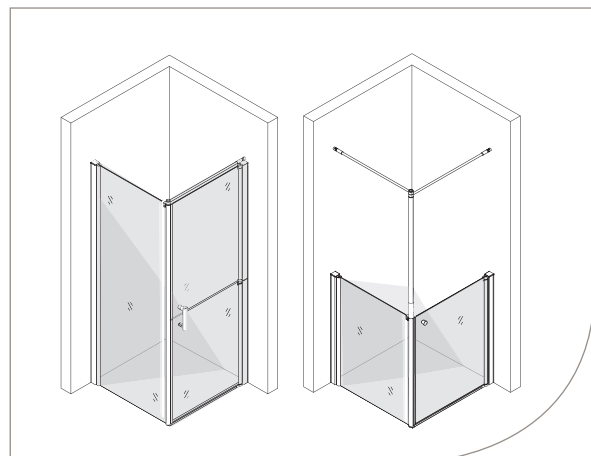
- 800mm x 800mm – 20mm adjustment per side
- 900mm x 900mm – 20mm adjustment per side
- 1000mm x 1000mm – 20mm adjustment per side
- 1100mm x 1100mm – 20mm adjustment per side
- Larenco[®] Duo and Duo Care screen sizes are modular so a variation of enclosure sizes can be achieved i.e. 800 x 1100

Certification:

- 6mm thick toughened glass tested to EN12150 / ANSI Z97.1 / CGSB-12.1-M90
- Screens tested to EN 14428 / IGC154 / CSA B45



6mm Clear Toughened Safety Glass



Larenco[®] Duo and Duo Care fixed panel and door



Duolinx Handle



Tray Compatibility:

Braddan

Level Access Tray



Braddan Tray Only Codes	Code
Braddan 800 x 800	16522
Braddan 900 x 900	16472
Braddan 1000 x 1000	16071

Braddan Waste Options	Code
GW50 Standard Gravity Waste 50mm trap	25126
GW19 Standard Gravity Waste 19mm trap	25125
PW50 50mm Standard Pumped Waste 15mm Outlet	25122
PW50 50mm Standard Pumped Waste 22mm Outlet	25405
Integral Uplift Waste trays also available	-

Please see Braddan specification sheet for further information

Mullen®

Level Access Tray



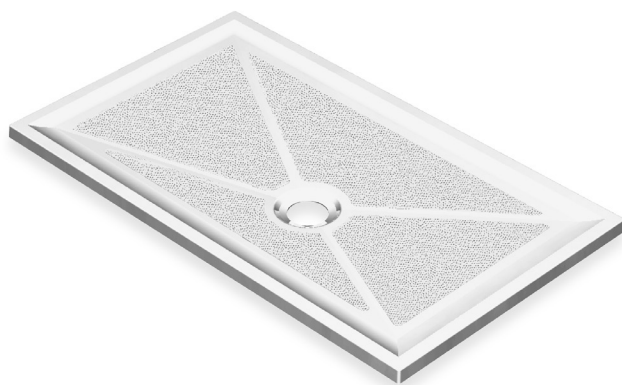
Mullen® Tray Only Codes	Code
Mullen® 1000 x 1000 Standard length + 50mm flange	26100

Mullen® Waste Options	Code
GW90 90mm diameter Gravity Waste	25120
Low Depth GW90 90mm Gravity Waste	25404

Please see Mullen® specification sheet for further information

Low Profile

Level Access Tray



Low Profile Tray Only Codes	Code
Low Profile 1000 x 1000	18055

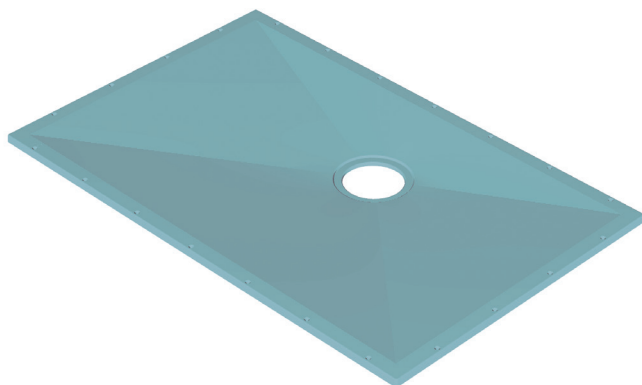
Low Profile Waste Options	Code
GW90 90mm diameter Gravity Waste	25120
Low Depth GW90 90mm Gravity Waste	25404

Please see Low Profile specification sheet for further information

Tray Compatibility:

Tuff Form[®]

Wet Floor Former



Tuff Form [®] Former Only Codes	Code
Tuff Form [®] 900 x 900	21000
Tuff Form [®] 1000 x 1000	21008

Tuff Form [®] Waste Options	Code
TF75 Tuff Form [®] Gravity Waste	25106
SS-TF75 Stainless Steel Tuff Form [®] Gravity Waste	LB00101
TFWA with GW50	25124
SS-TFWA with GW50	LB00102
TFWA with G19	25129
SS-TFWA with G19	LB00103
TFWA with Low Depth GW90	25409 & 25404
TF75 Bottom Outlet Waste	25408

Please note Tuff Form can be cut to length to suit a variety of additional different configurations

Please see Tuff Form[®] specification sheet for further information

Sulby

Low Entry Step In
Shower Tray



Sulby Tray Only Codes	Code
Sulby 900 x 900	17231
Sulby 1000 x 1000	17055

Wastes integral on all Sulby trays

Please see Sulby specification sheet for further information

Product Codes:

Description	Code	Description	Code
Larenco [®] Duo Fixed panel 800mm	26327	Larenco [®] Duo Door for Fixed panel 800mm	26335
Larenco [®] Duo Fixed panel 900mm	26328	Larenco [®] Duo Door for Fixed panel 900mm	26336
Larenco [®] Duo Fixed panel 1000mm	26329	Larenco [®] Duo Door for Fixed panel 1000mm	26337
Larenco [®] Duo Fixed panel 1100mm	26330	Larenco [®] Duo Door for Fixed panel 1100mm	26338
Larenco [®] Duo Care Fixed panel 800mm	26331	Larenco [®] Duo Care Door for Fixed panel 800mm	26339
Larenco [®] Duo Care Fixed panel 900mm	26332	Larenco [®] Duo Care Door for Fixed panel 900mm	26340
Larenco [®] Duo Care Fixed panel 1000mm	26333	Larenco [®] Duo Care Door for Fixed panel 1000mm	26341
Larenco [®] Duo Care Fixed panel 1100mm	26334	Larenco [®] Duo Care Door for Fixed panel 1100mm	26342

1 x Fixed panel and 1 x Door are needed to make up a corner enclosure. Duo Care and Duo doors are modular within their own height range

Dimensions and Profile Adjustment:

