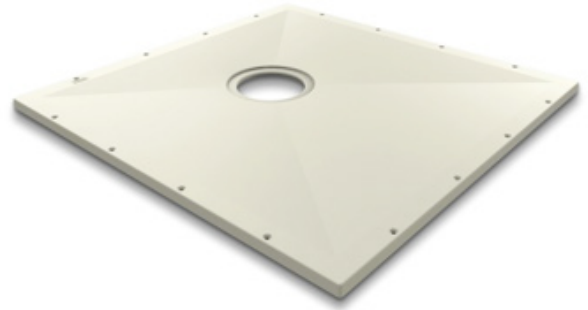


Wet Floor – SureForm

Issue 1 September 2015

Product overview

Affordable, strong and available in a wide range of size options, it is highly adaptable and means that every home can enjoy the superior style and luxury that a wet room provides. Constructed from solid glass reinforced plastic, it is strong enough to fit straight onto joists, saving time and money.



Features and benefits

- + Offset waste provides multiple drain position options to avoid joists
- + Max weight of 25 Stone / 158kg weight bearing
- + 22mm thick former fits within common floor depths to allow full level access
- + Adaptable as can be easily trimmed within 150mm of the waste area to ease installation
- + Single piece construction prevents delamination
- + Design provides ease of tiling
- + Easy and quick to install with drilled fixing holes
- + Environmentally friendly – 100% recyclable
- + For use with tiled floors

Installer features

- + 20 year guarantee
- + 22mm thickness
- + 25 Stone/158kg weight loading
- + Offset waste
- + SMC material
- + Single piece construction
- + Compatible with GW50 & GW19 wastes combined with SureForm waste adaptor
- + Please refer to wet room brochure for tanking kit options
- + Not suitable for shower stools and seats

Product codes

21310	900 x 900
21311	1000 x 1000
21312	1135 x 770
21313	1200 x 1200
21314	1300 x 820
21315	1400 x 900
21316	1500 x 820
21317	1800 x 820

Wet Floor – SureForm

Issue 1 September 2015

Dimensions



900 x 900mm
Code: 21310



1000 x 1000mm
Code: 21311



1135 x 770mm
Code: 21312



1200 x 1200mm
Code: 21313

Waste drains:

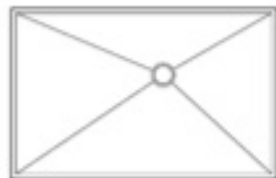
GW19: 25125
GW50: 25126

Waste adaptor:

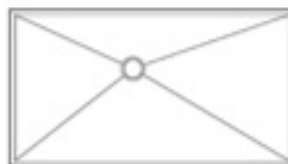
SFWA: 25433



1300 x 820mm
Code: 21314



1400 x 900mm
Code: 21315



1500 x 820mm
Code: 21316



1800 x 820mm
Code: 21317