

## Wastes – SilentFlow+® Pumped Waste

Issue 1 February 2016

### Product overview

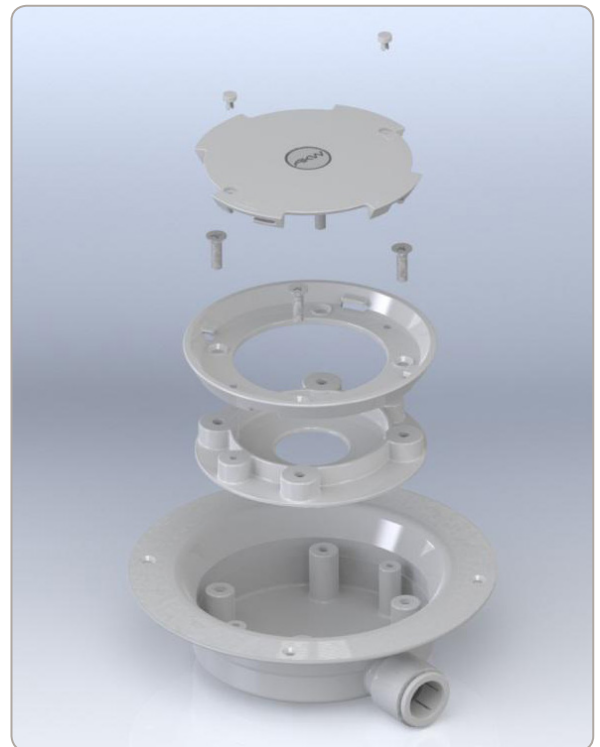
The SilentFlow+® pumped waste is a completely new design which is 'Silent' in operation to reduce the noise associated with shower pumps and wastes.

### Care features

- + Quiet performance at all flow rates
- + Bayonet or screw waste top for easy cleaning
- + Low maintenance and reliable operation
- + Compatible with all AKW shower waste pumps
- + Integrated 22mm JG fitting giving good flow capacity
- + Internal design optimised to balance flow and reduce gulping effect
- + Flow guides encourage linear flow
- + Bayonet cover fits existing TF75
- + Can be specified with any Tuff Form former with vinyl floor covering

### Product specification

- + Noise level testing shows the Silent Flow+® is comparable with the nearest competitors 'quiet' pumped waste at 11lpm and outperforms above 11lpm
- + The new waste can be connected to all pumps in the current range and has an integrated 22mm John Guest fitting, connection to a 15mm pipe is via a JG adaptor
- + Made from ABS plastic
- + Patented design GB 2373515



### Guarantee and approvals



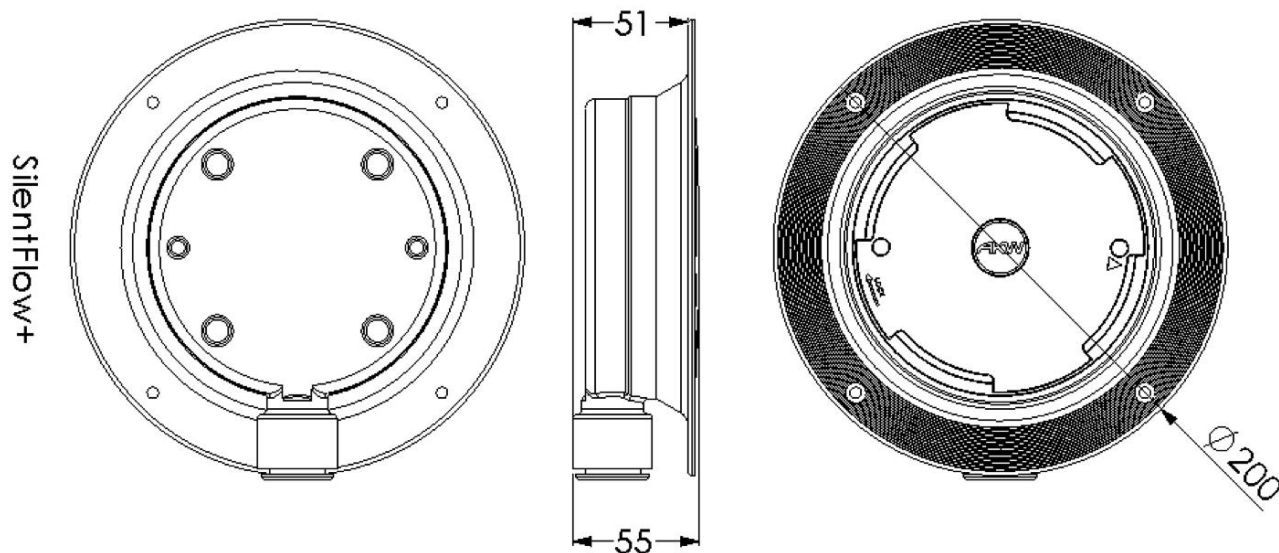
### Product codes

25414                      AKW Silentflow+® PGTF 22mm

## Wastes – SilentFlow+<sup>®</sup> Pumped Waste

Issue 1 February 2016

### Dimensions



### Product compatibility

- + DigiPump M11
- + DigiPump M17
- + DigiPump M20