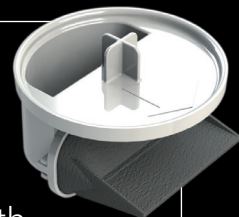




DW90 Low Depth Dry Shower Waste



Featuring an innovative and industry leading **non-return valve** that prevents bad odour backflow and only requires 48mm installation depth.



Please call **01905 823299** or visit **orders.akw-ltd.co.uk**
to order the new DW90 Low Depth Dry Shower Waste



**DW90 Low Depth
Dry Shower Waste:** 25492-UK



**DW90 Low Depth Dry Shower
Waste with Tuff Form®
Tiled Floor Adaptor:** 25418-UK



**DW90 Low Depth Dry Shower
Waste with Tuff Form®
Vinyl Floor Adaptor:** 25419-UK

Features:

- + **90mm diameter:** suitable for trays with Ø 90mm waste hole
- + Very compact
- + **Shallow 48mm depth:** useful for solid floors or shallow joists
- + If installing on a concrete floor, significantly less time spent channelling out concrete due to low depth
- + Non-return valve **preventing bad odour backflow**
- + **Trap will not dry out with sporadic use** – ideal for properties with sporadic occupation
- + **Universal pipe fitment**
- + **Suitable for push fit pipe** (with included adaptor)
- + **Suitable for solvent weld pipe** (with included adaptor)
- + Top access for easy cleaning
- + High flow rate (27 l/min with 15mm head and 1m of pipe)
- + Meets performance requirements of British Standards, BS EN 274 Part 2:2002ki9



**Spare Plastic
Chrome Dome:**
16-006-008



**Spare Metal
Chrome Dome:**
16-006-038



**Spare Pipe
Adaptor Kit:**
16-006-058



**Spare Dry Waste
Non-Return Valve:**
16-006-037

Please call **01905 823299** or visit **orders.akw-ltd.co.uk**
to order the new DW90 Low Depth Dry Shower Waste

AKW
Life Made Better