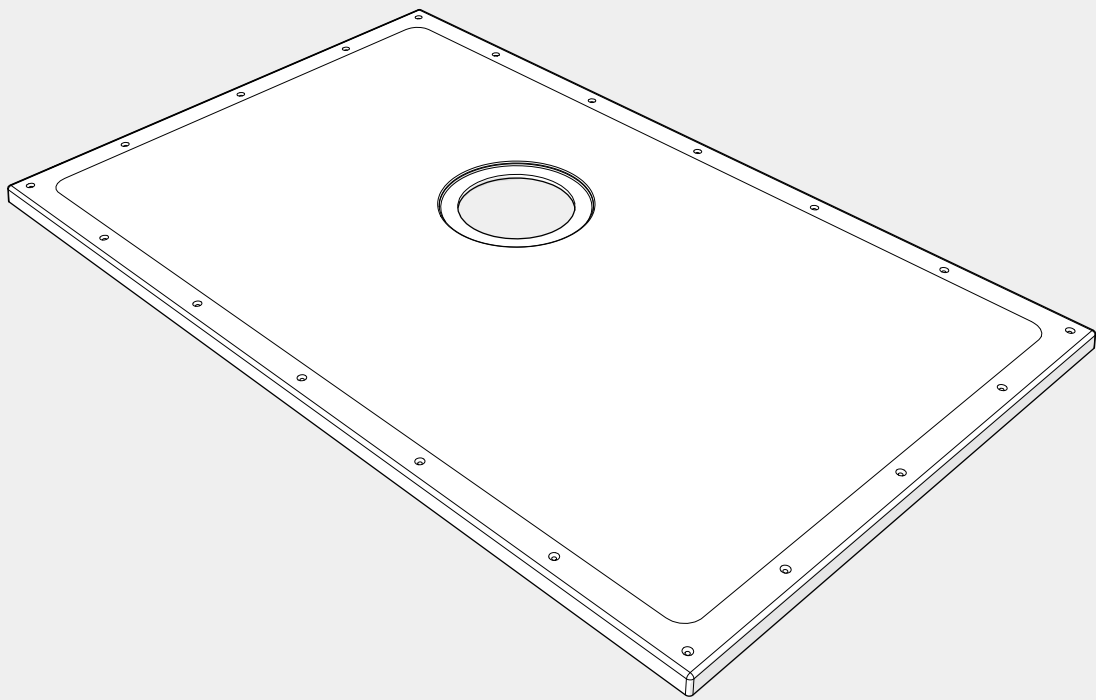




# ShowerDec Wet Room Floor Former

## INSTALLATION INSTRUCTIONS

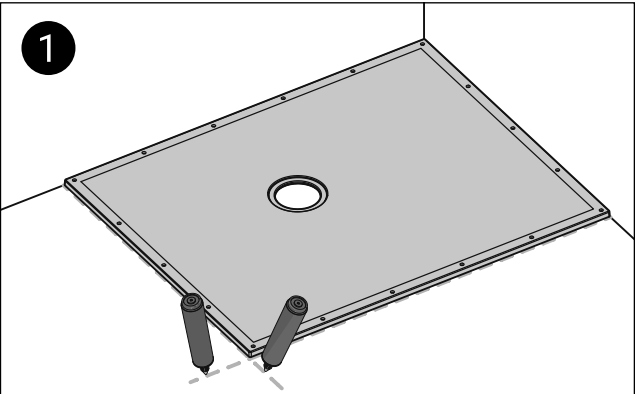


Please read all instructions before installation and leave this document with the end user for future reference as it contains important warranty information

# Concrete & Solid Floor Fitting

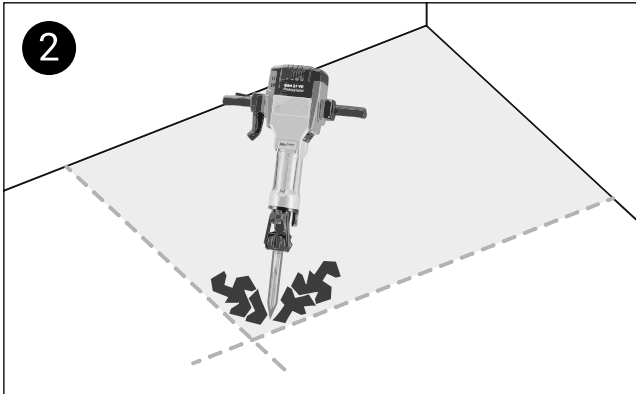
Refer to the waste's instructions in addition to this instruction as the waste and former are installed simultaneously.

1



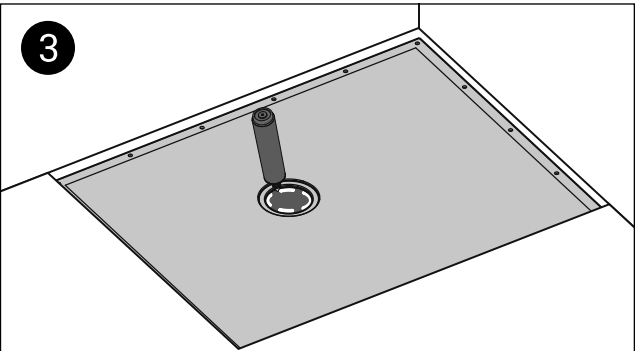
Place the former over the desired location for the shower and mark lines around the edges.

2



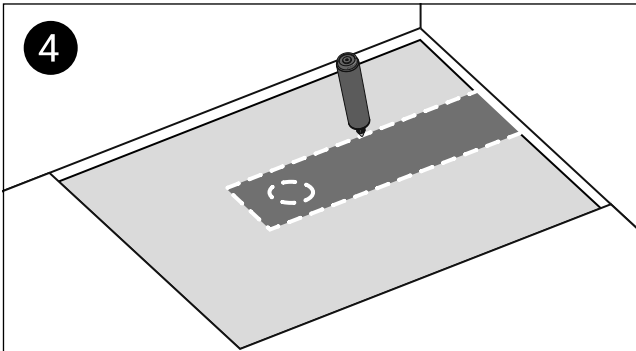
Carefully remove the floor material to a depth of 24 mm. Be aware of any buried cable or pipework.

3



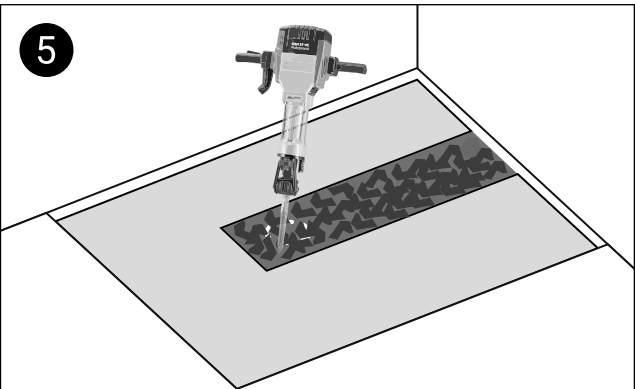
Place the former into the recess, ensuring that it fits neatly. Mark the position of the waste hole.

4



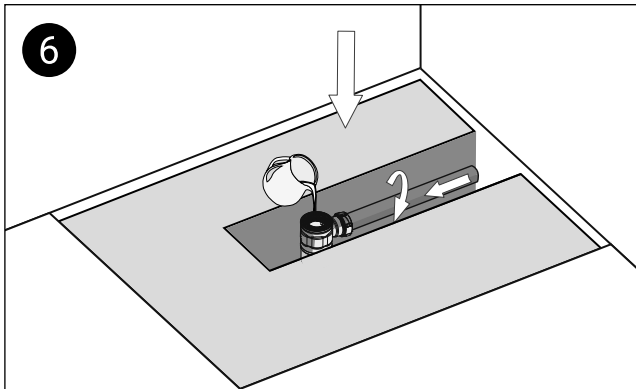
Remove the former. Determine the routing of the waste pipe.

5



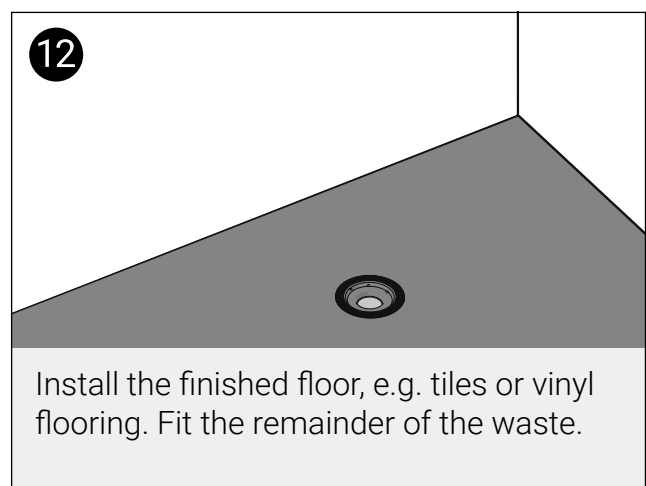
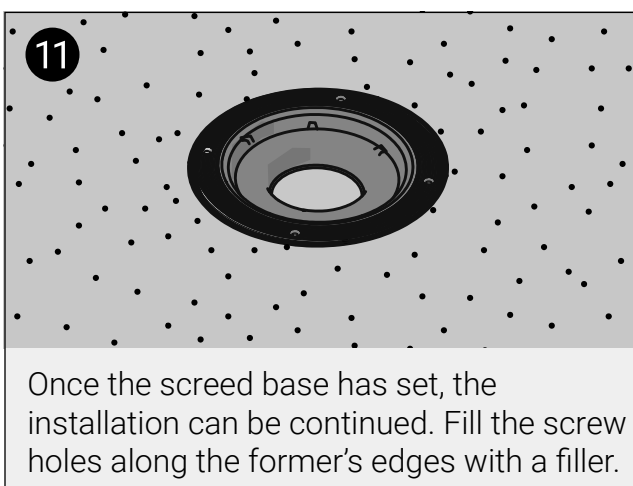
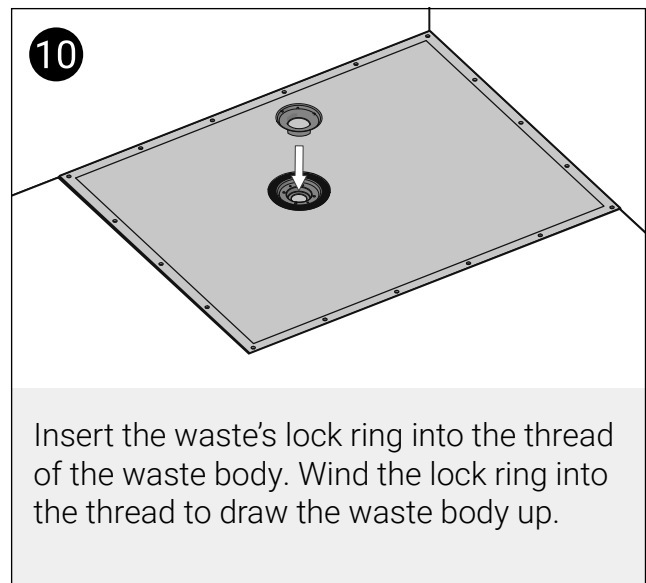
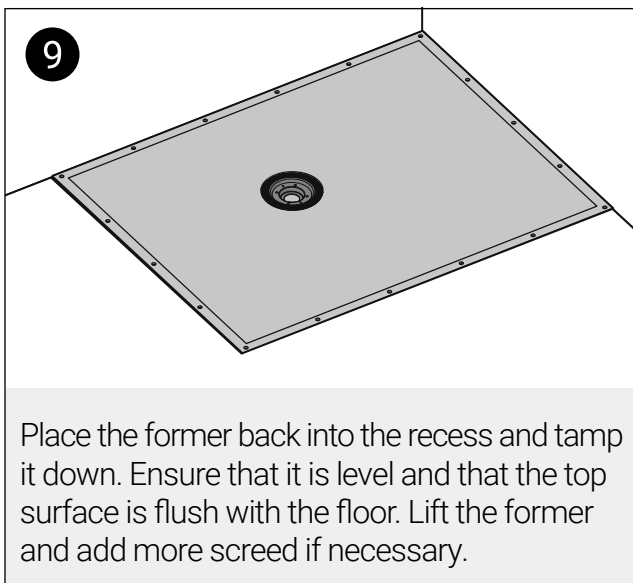
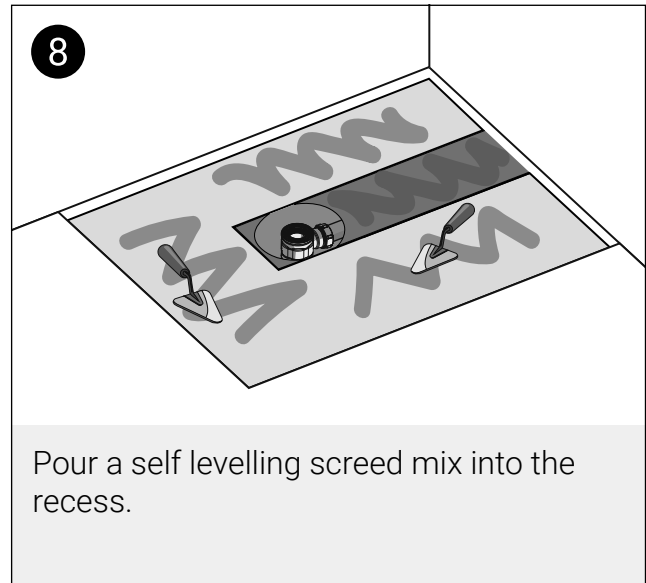
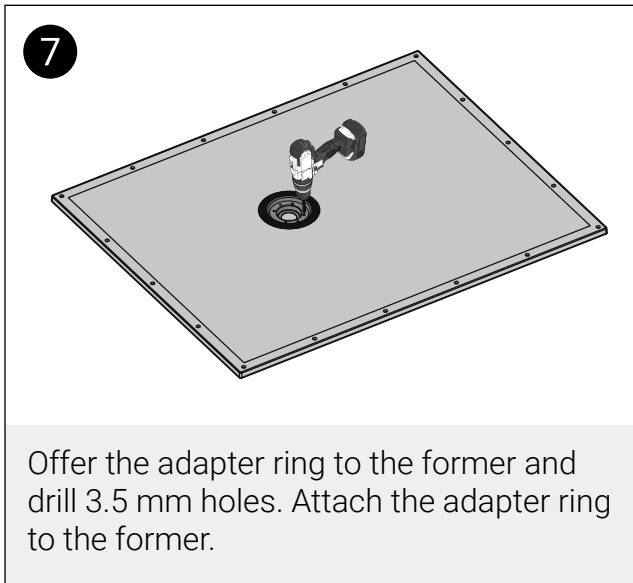
Remove floor material as required.

6



Place the waste body into the recess and connect it to the waste pipe. Pack the waste body up to just below its final position.\* Pour some water down it to check for leaks.

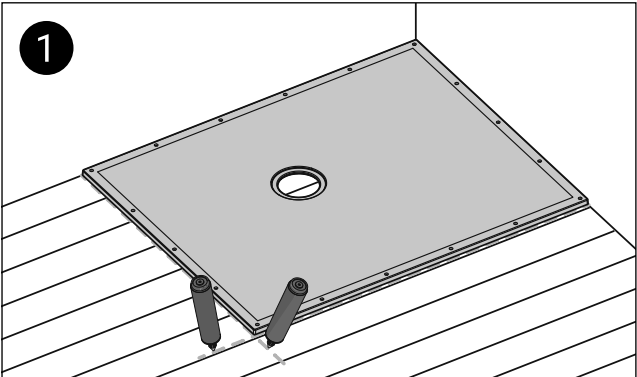
\*You can determine this by putting the former and the waste's adapter ring in place. There should be a small gap between the waste body and adapter ring.



# Wooden Floor Fitting

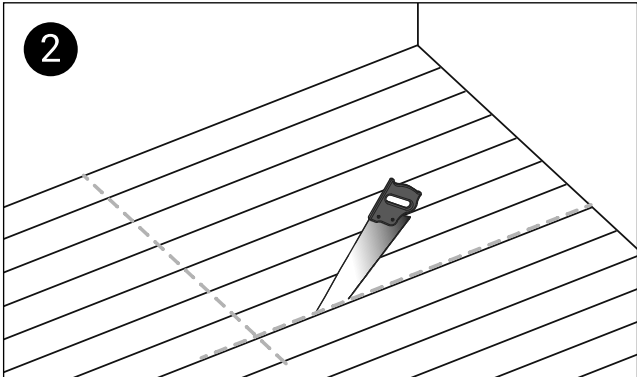
Refer to the waste's instructions in addition to this instruction as the waste and former are installed simultaneously.

1



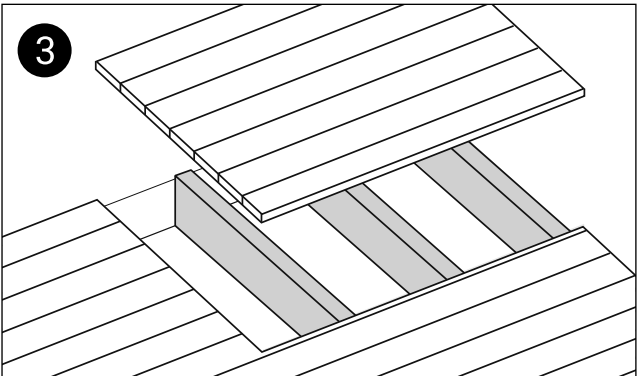
Place the former over the desired location for the shower and mark lines around the edges.

2



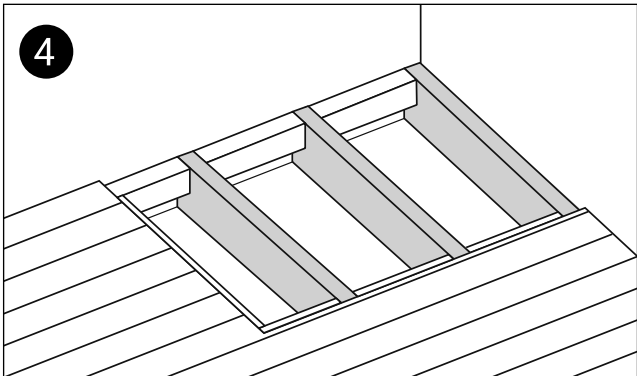
Cut the floor boards, taking care not to cut through the supporting joists or any plumbing or wiring.

3



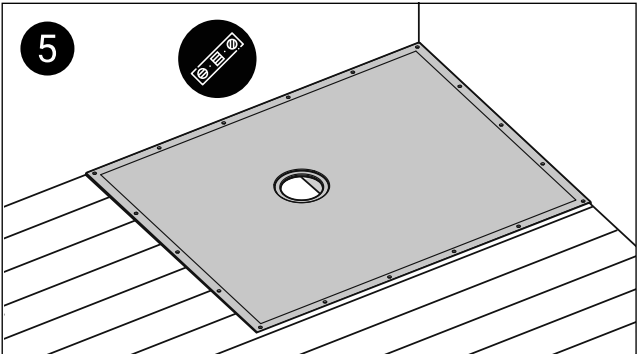
Remove the floor boards.

4



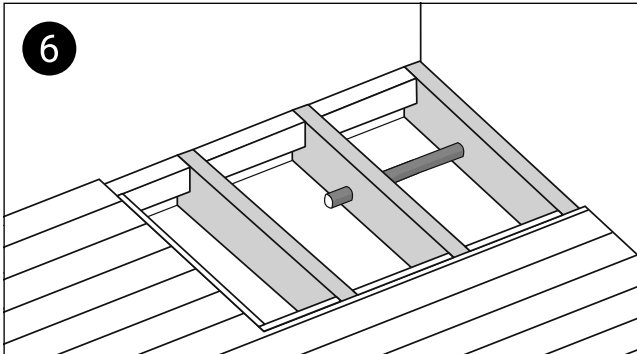
Insert noggins between the joists to support the edges of the former. Perform any necessary packing to ensure that the former is level.

5

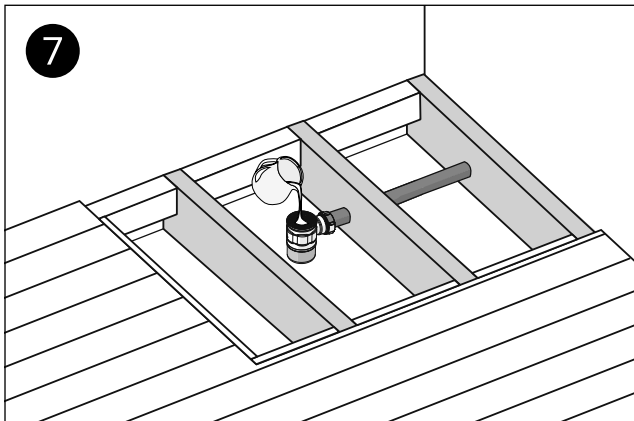


Place the former into recess to determine the waste position and waste pipe routing. Check that the former is level. Remove the former.

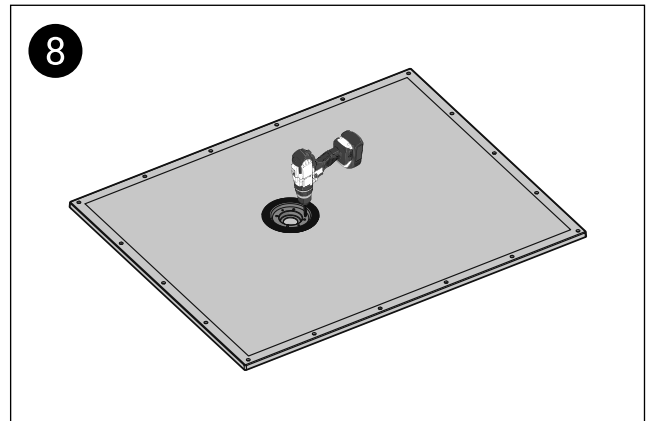
6



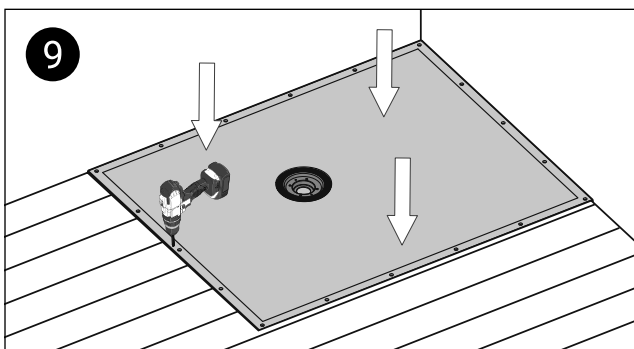
Route the waste pipe. If routing through joists, drill holes. Do not cut notches. The holes in the joists must allow for the upward travel of the waste body (steps 7 and 10).



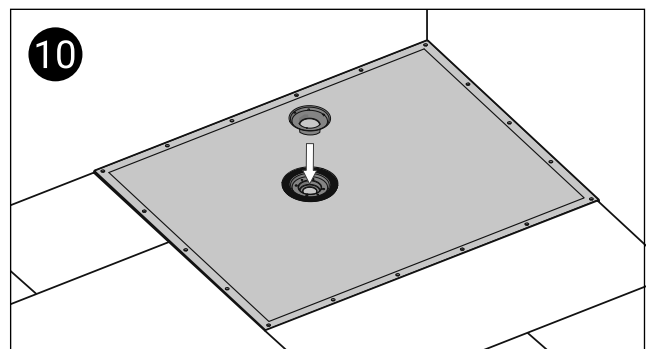
Connect the waste body to the waste pipe. Pack the waste body up to just below its final position.\* Pour some water down it to check for leaks.  
\*You can determine this by putting the former and the waste's adapter ring in place. There should be a small gap between the waste body and adapter ring.



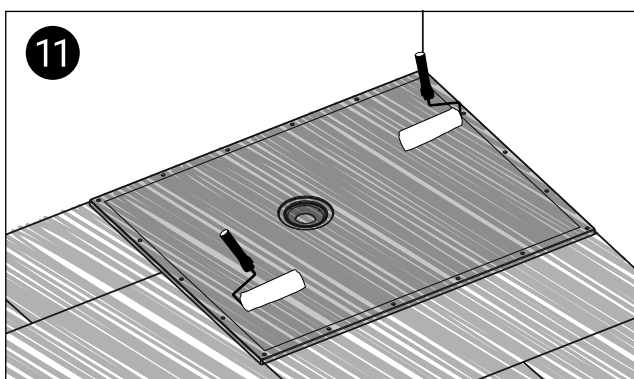
Offer the adapter ring to the former and drill 3.5 mm holes. Attach the adapter ring to the former.



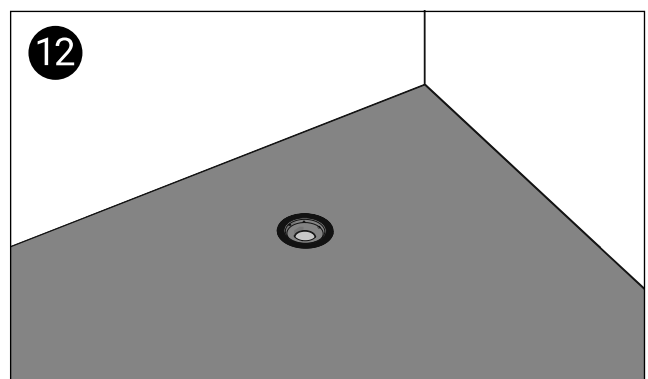
Place the former into the recess and screw it down. Each corner must be screwed down. Screw into joists where possible. Screw down enough to ensure that the former will never move.



Insert the waste's lock ring into the thread of the waste body. Wind the lock ring into the thread to draw the waste body up. If necessary, use plywood boards to bring the floor up to be flush with the top of the former.



Install the finished floor, e.g. tiles or vinyl flooring.



Fit the remainder of the waste.





# Contact Us

**AKW**  
Life Made Better

## Orders & Quotes

01905 823 299  
orders@akw-ltd.co.uk

## General Enquiries

01905 823 298  
sales@akw-ltd.co.uk

## Technical Enquiries

01905 560 219  
tech@akw-ltd.co.uk

## Kitchen Enquiries

01905 823 262  
kitchens@akw-ltd.co.uk

## Fax

01905 823 297

## AKW

Pointon Way, Hampton Lovett  
Droitwich Spa, WR9 0LR

**www.akw-ltd.co.uk**  
**orders.akw-ltd.co.uk**

## Follow us on Social:



## Warranty

Warranty applies only to manufacturing or material defects, conditional on the one-time correct installation of the product. It does not apply to:

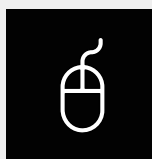
- Inappropriate use or accidental damage.
- Damage or defects that result from incorrect installation.
- Lack of maintenance including the build up of grime or damage resulting from inappropriate cleaning.
- Damage or defects that result from repairs or modifications undertaken by unauthorised persons.
- General wear and tear through usage and does not apply to surface finishes.

Warranty period starts from the date of installation. See the T&Cs on our website for further information.

### Select 1 of 2 ways to activate your warranty



#### 1. Scan using your Smart Device



#### 2. Visit Online

[akw-ltd.co.uk/warranty-information](http://akw-ltd.co.uk/warranty-information)

### What to do if something goes wrong?

In the event that you encounter a problem with this product, follow the trouble shooting guide if applicable, then contact your local installer. If the issue is still unresolved, contact AKW Technical Enquiries who will provide further advice and arrange for a maintenance engineer to visit if necessary. None of the foregoing affects your statutory rights.