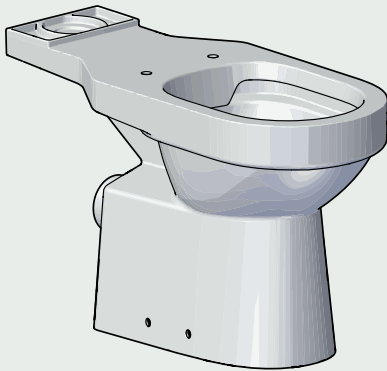


# Navlin DOC M Toilet Pan Range

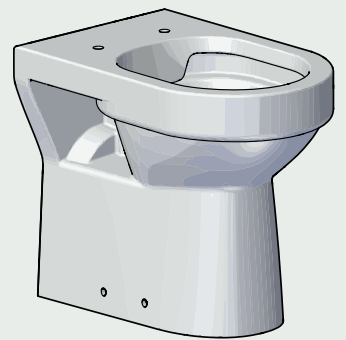
## INSTALLATION INSTRUCTIONS



Raised Height  
(750mm)  
23590



Raised Height  
(650mm)  
23591



Raised Height  
Back To Wall  
23593



Read all instructions before installation and leave this document with the end user for future reference as it contains important warranty information

Important Information ..... 3

Dimensions..... 4

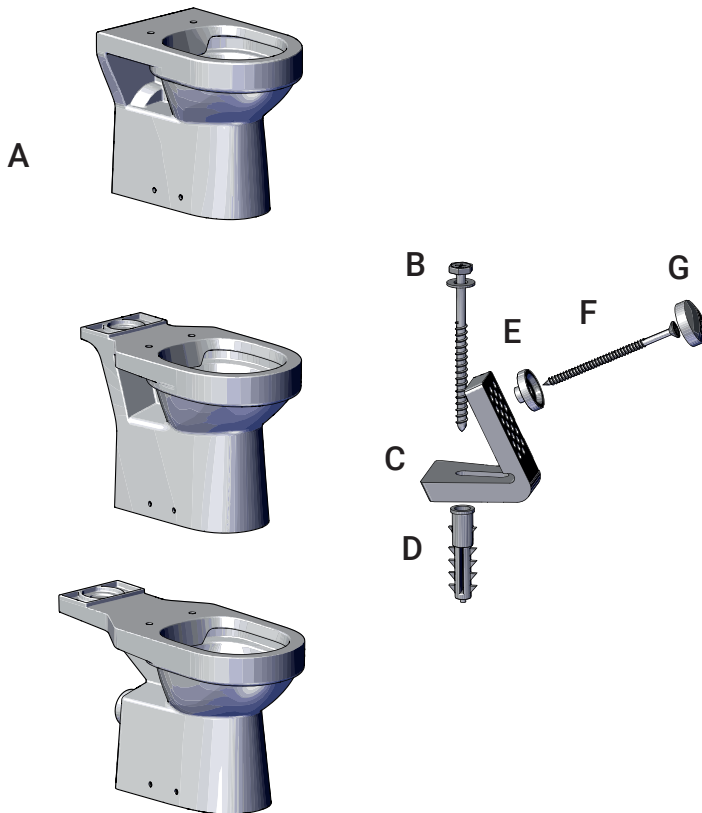
Toilet Pan Installation ..... 5

Back To Wall Installation..... 6

User Care and Warranty..... 7

Contact Us..... 8

## Parts Supplied



Parts		QTY
A	Pan	1
B	Floor Fixing Screw	4
C	L- Bracket	4
D	Floor Fixing Plug	4
E	Screw Sleeve	4
F	L- Bracket Screw	4
G	Screw Cap	4

Note: follow the separate Navlin Doc M Toilet Cistern installation instructions to determine if the Cistern needs to be connected to the Pan before installation.

**Installation must be carried out in accordance with these instructions, and must be conducted by a qualified and competent installer.**

This product must be installed in compliance with Water Regulations. Cold water isolating valves should be fitted to the inlet pipework.

**Important:** Access must be made available to the water supplies and fixings for future maintenance and servicing. Make sure all fixing holes are used and do not over-tighten the fixings.

### Before you start

Remove all protective covering and examine carefully. Check that all items are present before discarding packaging. Notify the retailer immediately of any damage or faults. The manufacturer cannot be held responsible for any installation costs that may arise from damaged or faulty products being installed and not in accordance with these instructions. Dispose of all packaging in accordance with the local recycling authorities.

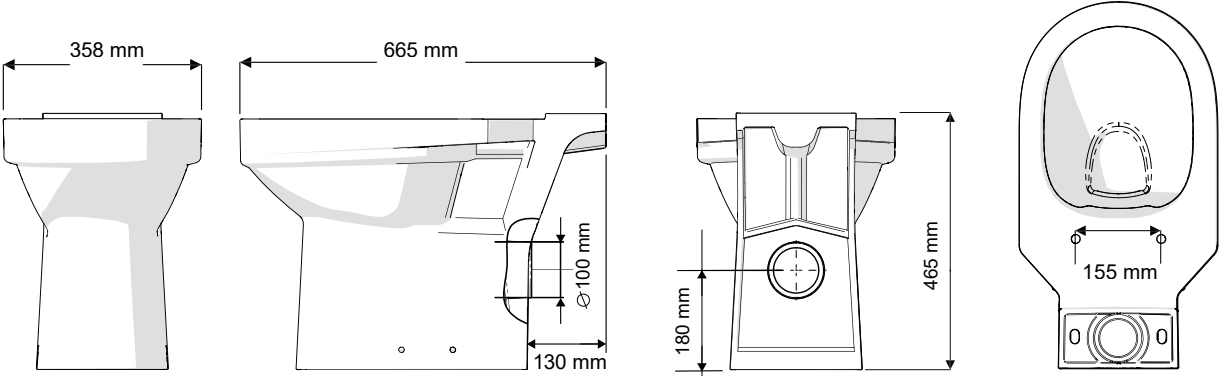
### Safety

- Handle ceramics with extreme care.
- This product is heavy and may require two people to carry.
- Have the correct tools available.
- When drilling walls or floors, check first for hidden pipes and cables.
- Use safety eye wear when drilling.
- Keep small parts and packaging away from children.

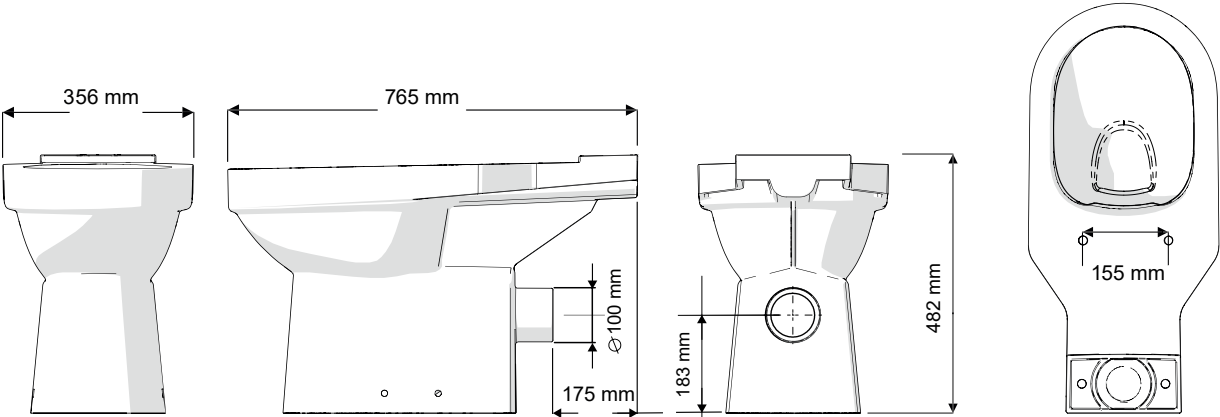


# Dimensions

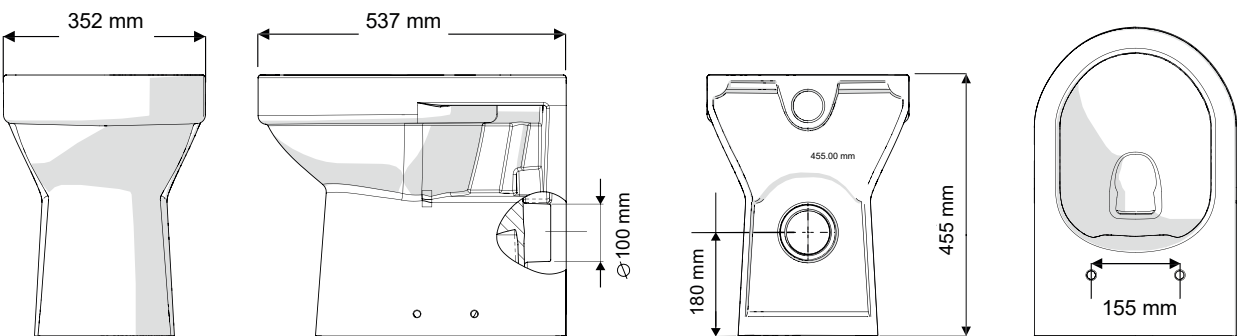
Raised Height 650mm  
23591



Raised Height 750mm  
23590



Raised Height Back To Wall  
23593



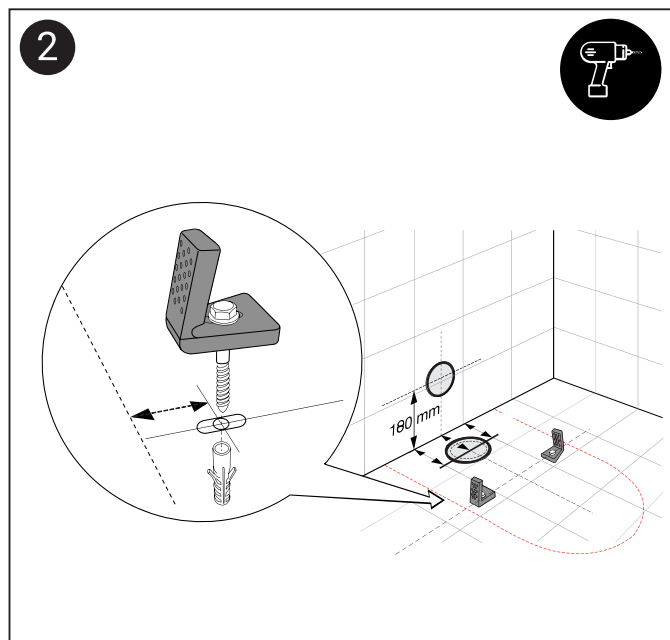
# Toilet Pan Installation

5

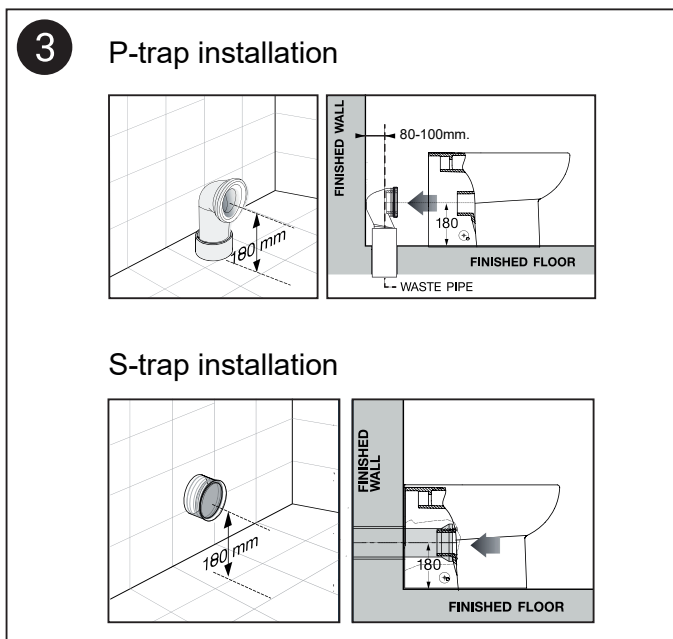
**Important!** Before installation, isolate the water supply. Ensure the floor area is smooth, level surface and clear of any loose building materials or sharp objects that could damage the ceramic during installation. Carefully measure and install all necessary pipework prior to installing the toilet.



Carefully move the toilet pan into position against the wall and mark the mounting hole positions 90 degrees. The fixing L brackets must be on the inside of the pan. Measure the width of the ceramic to determine this.



Remove the toilet pan and double check the waste pipe position and bracket positions before drilling. Drill fixing holes at the marked locations and insert the floor fixing plugs.



If required cut the waste outlet pipe to length and attach it to the soil outlet pipe. Carefully reposition the toilet pan connecting the waste outlet pipe onto the waste outlet. Ensure a firm connection and test for leaks.



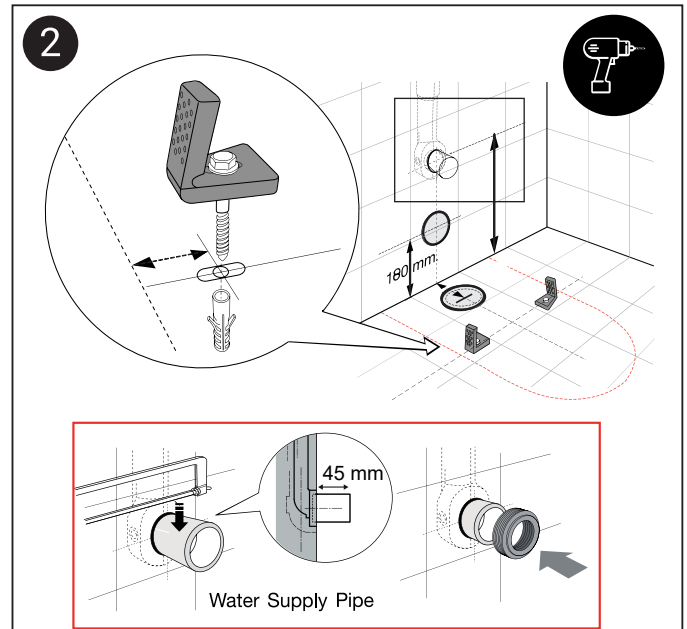
Re-align the toilet pan with the L brackets. Secure the pan to the floor with the fixing screws and attach the cover caps. Do not over tighten. Apply sealant between the pan and the floor. Continue with the cistern and toilet seat installation.

# Back to Wall Installation

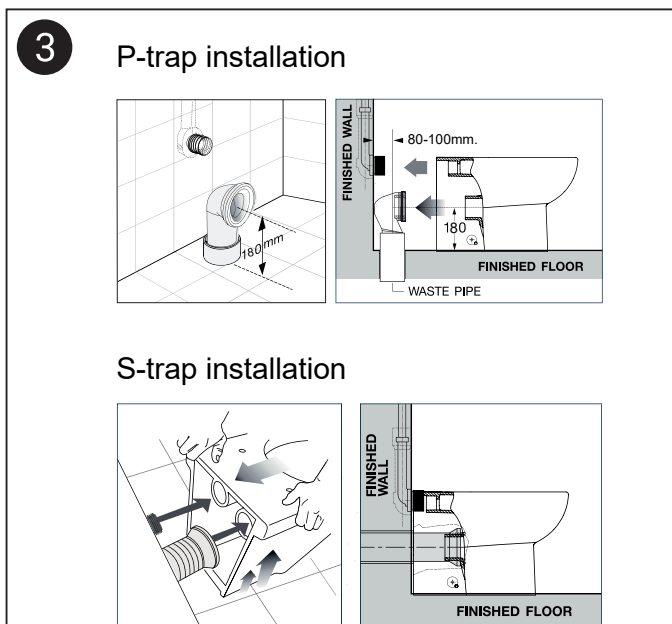
**Important!** Before installation, isolate the water supply. Ensure the floor area is smooth, level surface and clear of any loose building materials or sharp objects that could damage the ceramic during installation. Carefully measure and install all necessary pipework prior to installing the toilet.



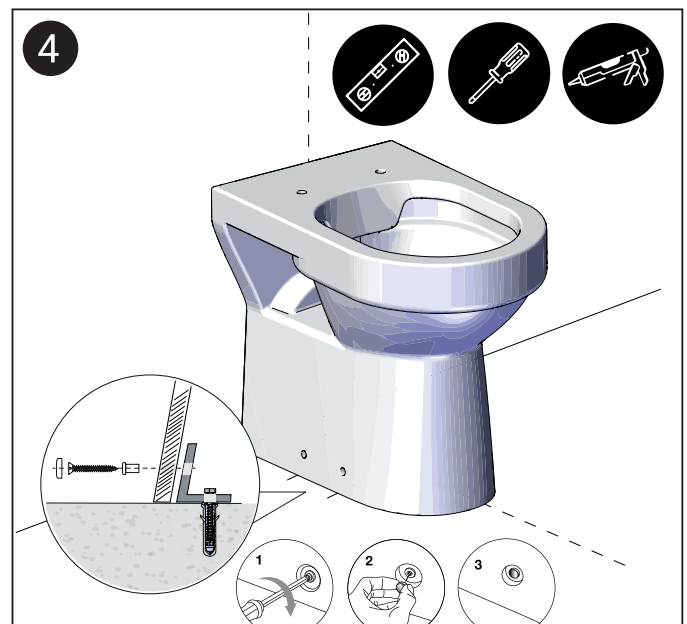
Carefully move the toilet pan into position against the wall and mark the mounting hole positions 90 degrees. The fixing L brackets must be on the inside of the pan. Measure the width of the ceramic to determine this.



Remove the toilet pan and double check the waste pipe and water supply pipe positions. Drill fixing holes at the marked locations and insert the floor fixing plugs. If required cut the water supply inlet to length and attach a pipe gasket seal.



If required cut the waste outlet pipe to length and attach it to the soil outlet pipe. Carefully reposition the toilet pan connecting the waste outlet pipe onto the waste outlet. Ensure a firm connection and test for leaks.



Re-align the toilet pan with the L brackets. Secure the pan to the floor with the fixing screws and attach the cover caps. Do not over tighten. Apply sealant between the pan and the floor. Continue with the toilet seat installation.

## After Care

It is advised that this product is cleaned regularly as part of a routine maintenance regime.

For routine cleaning, use hot soapy water or a mild detergent and a soft cloth to wash and rinse the toilet area. Never use abrasive cloths or any aggressive cleaning materials to clean the showering area. Do not use industrial cleaners that have abrasive or harsh chemical properties as this could affect the surface finish.

The surface of ceramics should never directly come into contact with strong industrial acids or alkalis, organic solvents, caustic soda, lacquers or nail polishes, bleaches or any dry powder cleaning agents. Do not use paint strippers or stain removers to remove any stubborn staining. If more thorough cleaning is needed using domestic cleaning products always reading the manufactures cleaning guidelines and test on a small area at the rear first.

## Warranty

Lifetime guarantee applies only to manufacturing or material defects. AKW products should be installed by a competent installer or trades persons using the appropriate fixings suitable for the condition of the surfaces on which the product is to be attached.

The selection of any specific fixings must be made by the installer based upon the requirements for each individual installation.

If you do not install these products in accordance with these supplied instructions, or if you carry out any unauthorised modifications to this product, you will affect product safety and invalidate this warranty. Warranty starts from the date of installation. Always keep proof of purchase.

## Warranty does not cover

- Normal wear and tear through usage, inappropriate use or accidental damage.
- Damage or defects that result from incorrect installation, improper use, breakages, blockages or lack of maintenance including the build up of grime, dirt, lime-scale and water-borne debris.
- Damage from water freezing or extreme temperature changes.
- Damage to surface finishes from inappropriate cleaning, staining or water ingress.
- Damage or defects that result from repairs or modifications undertaken by persons who are not installers or service engineers.

## What to do if something goes wrong?

In the event that you should encounter a problem with this product, please contact your local installer and if this does not resolve the issue, then contact AKW technical enquiries who will provide further advice and, if necessary, arrange for a maintenance engineer to visit and report any issues.

As part of our quality and training program, calls may be monitored or recorded.  
None of the foregoing affects your statutory rights.

# Contact Us



## **Orders & Quotes**

01905 823 299

[orders@akw-ltd.co.uk](mailto:orders@akw-ltd.co.uk)

## **General Enquiries**

01905 823 298

[sales@akw-ltd.co.uk](mailto:sales@akw-ltd.co.uk)

## **Technical Enquiries**

01905 560 219

[technicalenquiries@akw-ltd.co.uk](mailto:technicalenquiries@akw-ltd.co.uk)

## **Kitchen Enquiries**

01905 823 262

[kitchens@akw-ltd.co.uk](mailto:kitchens@akw-ltd.co.uk)

## **Fax**

01905 823 297

## **AKW**

Pointon Way, Hampton Lovett  
Droitwich Spa, WR9 0LR

[www.akw-ltd.co.uk](http://www.akw-ltd.co.uk)

[orders.akw-ltd.co.uk](http://orders.akw-ltd.co.uk)

