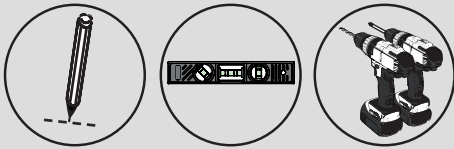
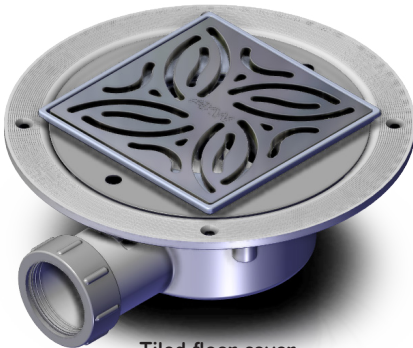


Tuff Form Low Depth Shower Waste



Installation Instructions
& User Care Instructions



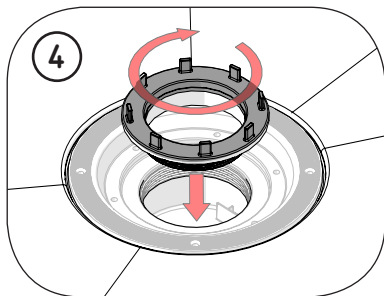
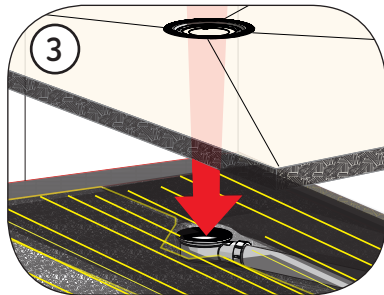
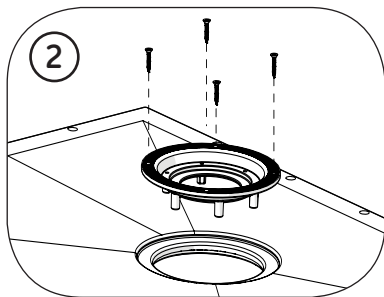
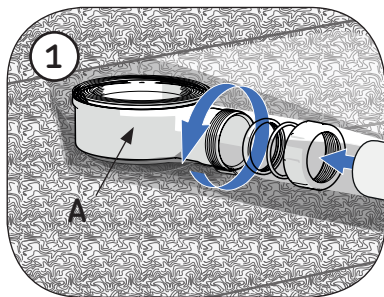
Tiled floor cover



Safety flooring cover

Installation Instructions

For tiled floor waste cover 1-8



(1) As a "dry run", first place the tray into the desired location and determine the position, the depth and the clearance required for the waste with at least a 1 in 40 fall. Ensure there is sufficient support around the waste, or tray instructions. Before fitting the waste, place the nut onto the waste pipe, followed by the backing ring and the seal. Insert waste pipe into the waste and tighten the nut. Check that the pipe connection is correctly assembled, sealed and watertight. Ensure that the waste seal (A) is positioned into the recessed section on the top of the waste body before connecting to the tray.

(2) Attach the waste adaptor ring to the former.

(3) Lower the former into position over the waste.

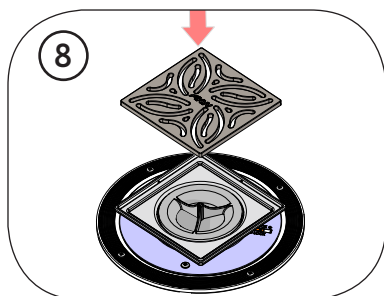
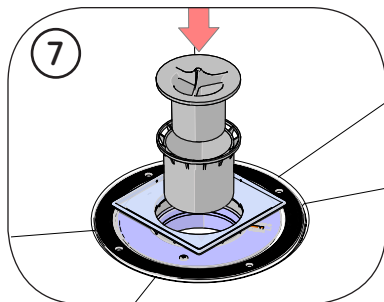
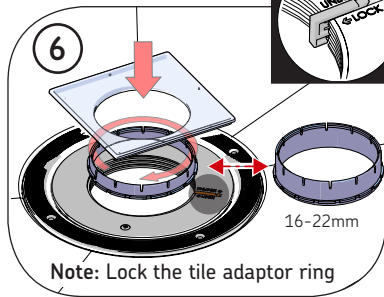
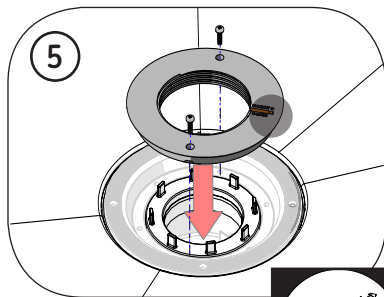
(4) Screw the clamping ring to the waste body until it creates a water tight seal.

(5) Secure the locking ring to the waste adaptor with the screws. Note: For the safety flooring waste cover, see step 5a opposite.

(6) Screw the tile adaptor ring into the locking ring and adjust the height to suit the adhesive and tiles.

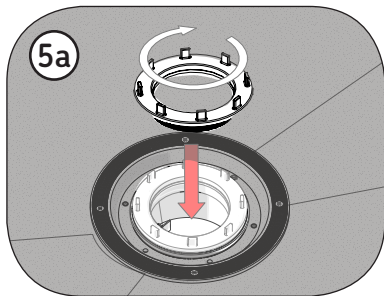
(7) Lower the Trap Non-Return Valve into the waste main body making sure that the valve faces towards the waste outlet pipe.

(8) Temporarily cover the waste whilst tiling to prevent tile adhesive entering the waste. When the installation is complete then insert the metal cover.



Installation Instructions

For safety flooring waste cover 1-4 5a-8a



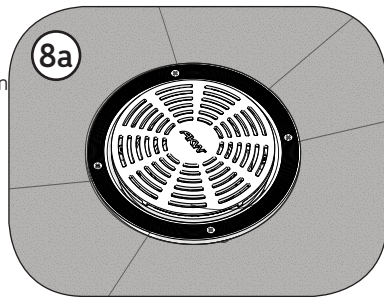
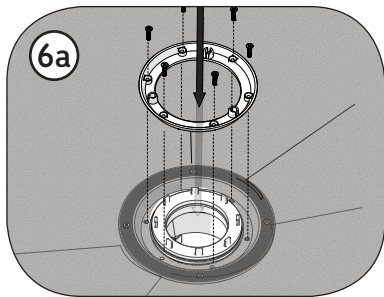
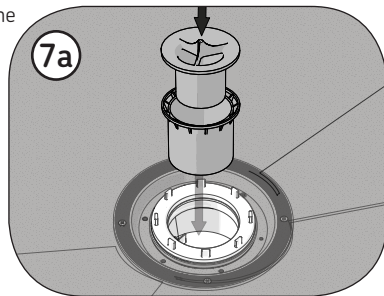
Follow steps **1-4** installing the waste adaptor.

(5a) Before attaching the locking ring with the screws provided, install the safety floor and trim to the inside edge of the waste trap.

(6a) Screw the locking ring to the waste adaptor ring, clamping the safety floor.

(7a) Lower the Trap Non-Return Valve into the waste main body making sure that the valve faces towards the waste outlet pipe.

(8a) Whilst work continues in the area. Temporarily cover the waste area to protect the trap from any debris entering. Once complete attach the safety floor waste cover ensuring the location pegs are inserted into the locking ring.

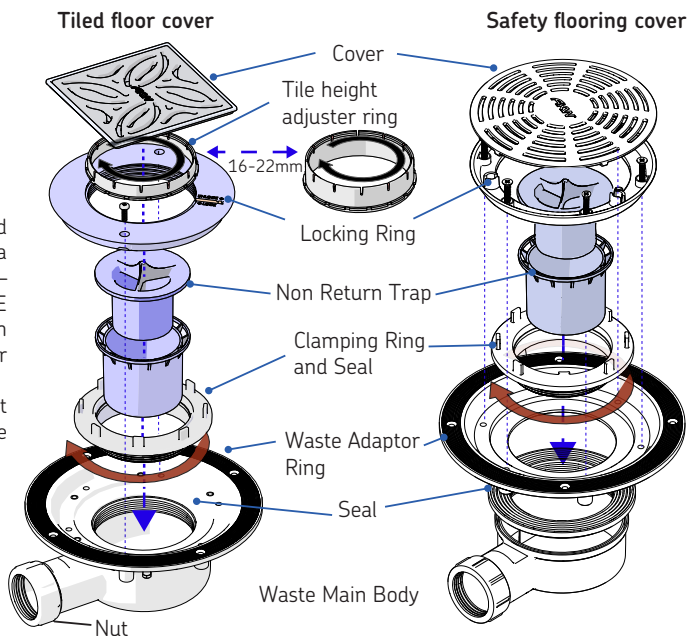


9





Finishing the waste installation

(9) Remove any debris and clean up inside the waste area of tile grout and cement – REMOVE TEMPORARY WASTE BLANKING MATERIALS, clean any grout and cement or other rubbish from the waste.

Re-fit the cover. It should sit level with the edge of the frame and the finished floor surface.



Important Safety Information and User Care

-  **ALWAYS** read these installation instructions carefully before installing this product and leave with the end user for future reference.
-  **ALWAYS** have the waste installed by a trained and experienced installer.
ALWAYS match the correct waste to the shower tray.
-  **NEVER** use the waste without the unit fully assembled.
-  Beware of pinch hazards may be present around the edges during installation.

Keeping your wastes clean

This product should be cleaned periodically to remove any accumulation of hair or other waste material, using normal domestic bathroom cleaning materials. To remove and clean the trap, first remove the cover to gain access to the trap valve.

Disinfecting - Where disinfecting is necessary, standard procedures for disinfecting equipment should be used, taking due care and attention to the warning signs concerning possible effects of aggressive chemicals on plastics. After cleaning, always flush down with water then wipe thoroughly with a damp cloth to remove any cleaning material residues before drying.

Do not use strong or concentrated acidic, alkaline or other cleaning materials as these may discolour or otherwise damage the product. Do not use abrasive cloths.

AKW does not approve or recommend autoclave cleaning of any of the components due to the damage which this can cause to the special engineering plastics used in the construction of this product.

Packaging- Wastes are supplied in a polypropylene (PP) bag to keep the product unsoiled until installation; it may also be packed in a cardboard box. Both are suitable for recycling operations and should be disposed of in accordance with local recycling regulations.

*Guarantee

The life time guarantee only applies to manufacturing or material defects conditional on the one-time correct installation of the product and does not apply to blockages, inappropriate use or accidental damage. This does not cover damage or defects that result from incorrect installation, lack of maintenance including the build up of grime, dirt or lime-scale and water-borne debris, damage resulting from inappropriate cleaning or water ingress, damage from water freezing, damage or defects that result from repairs or modifications undertaken by unauthorised persons who are not maintenance engineers. This guarantee excludes general wear and tear through usage and does not apply to surface finishes.



Technical Help line
01905 560219

Orderline
01905 823299

General Enquiries
01905 823298

Fax
01905 823297

Website
www.akw-ltd.co.uk

Quotes & orders email
orders@akw-ltd.co.uk

Enquiries email
sales@akw-ltd.co.uk
technicalenquiries@akw-ltd.co.uk

Post
AKW, Pointon Way,
Hampton Lovett,
Droitwich Spa,
WR9 0LR



For the latest AKW product news scan this QR code with your device.

What to do if something goes wrong?

In the event that you should encounter a problem with this product, please contact your local installer and if this does not resolve the issue, then contact AKW technical team who will provide further advice and, if necessary, arrange for a maintenance engineer to visit and report any issues.

As part of our quality and training program, calls may be monitored or recorded. None of the foregoing affects your statutory rights.

These instructions are provided to advise the minimum standards of installation and recommends what the best practice for the installation is. Due to the very wide variability of possible installation conditions, AKW cannot provide all circumstances for the installation. AKW cannot accept any liability in connection with this information or its use. This information is provided on the condition that the person receiving it shall make his/her own tests to determine the suitability for the particular purpose. Failure to install this AKW product in accordance with supplied instructions or the making of unauthorised modifications will invalidate any warranty and may affect product safety. None of the foregoing affects your statutory rights.