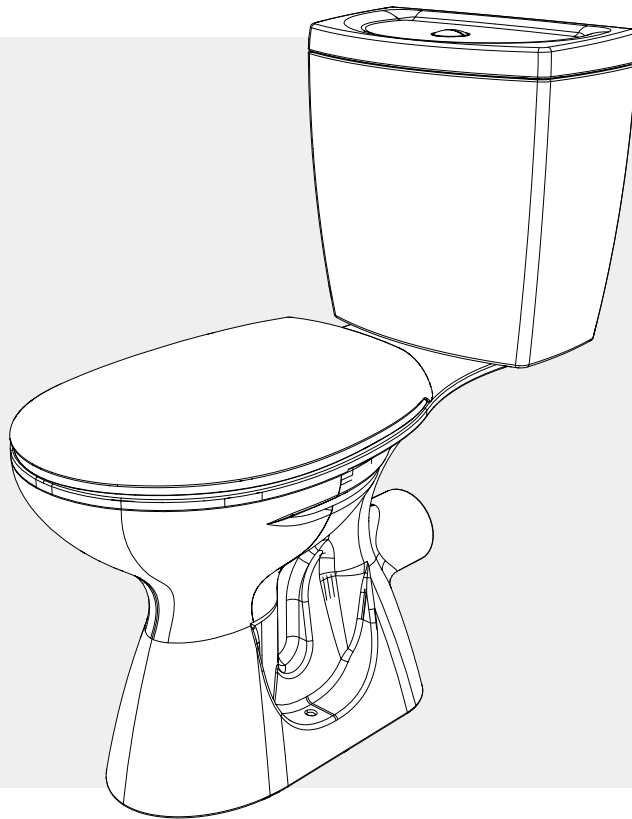




Livenza Ceramic Toilets

INSTALLATION INSTRUCTIONS



Please read all instructions before installation and leave this document with the end user for future reference as it contains important warranty information

Important Information

Handle this product carefully at all times.

Ceramic items must be protected from any contact with hard materials and impacts during handling and installation.

Inspect the toilet and cistern for any sign of damage prior to installation.

This product must be installed in accordance with the current edition of Building Regulations. Ceramics can break or chip if the bolts or nuts are over-tightened or carelessly handled.

Make sure that all fixing holes are used. Take care not to damage surface.

Do not use countersunk screws or make any holes larger. This will invalidate any warranty.

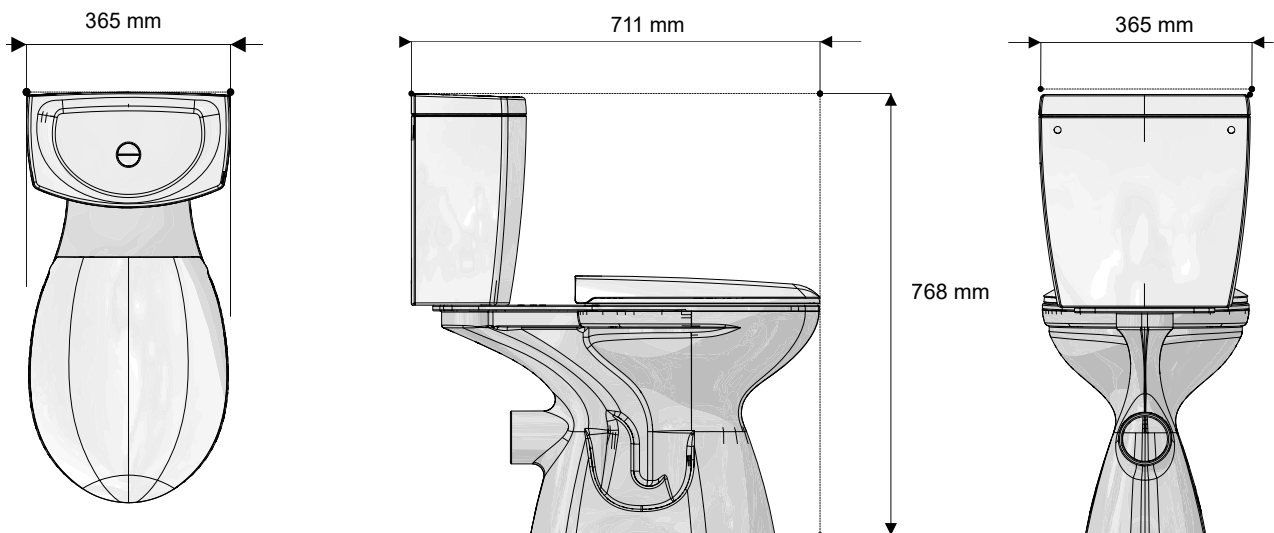
AKW cannot specify fixings for all floor types.

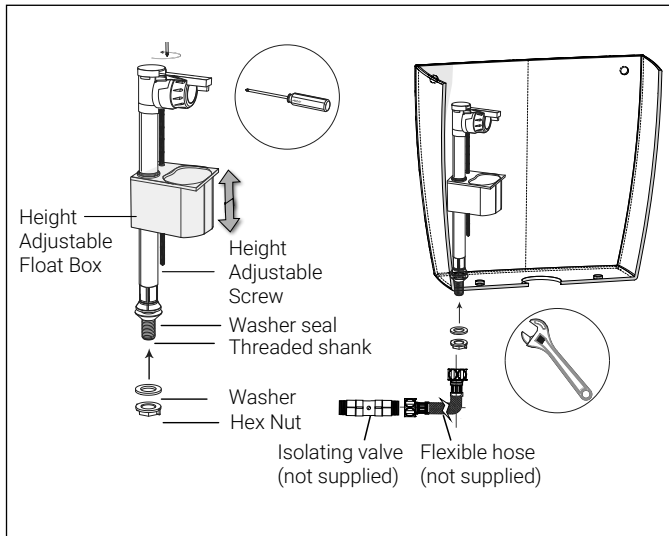
You should consult a fixing manufacturer if you are unsure of which type to use.

Shut off water supply. Soil pipe is 100 mm.

Flexible hoses are recommended to connect the water supply to the filler valve.

Do not use white cement or high lime content cements to install this product.





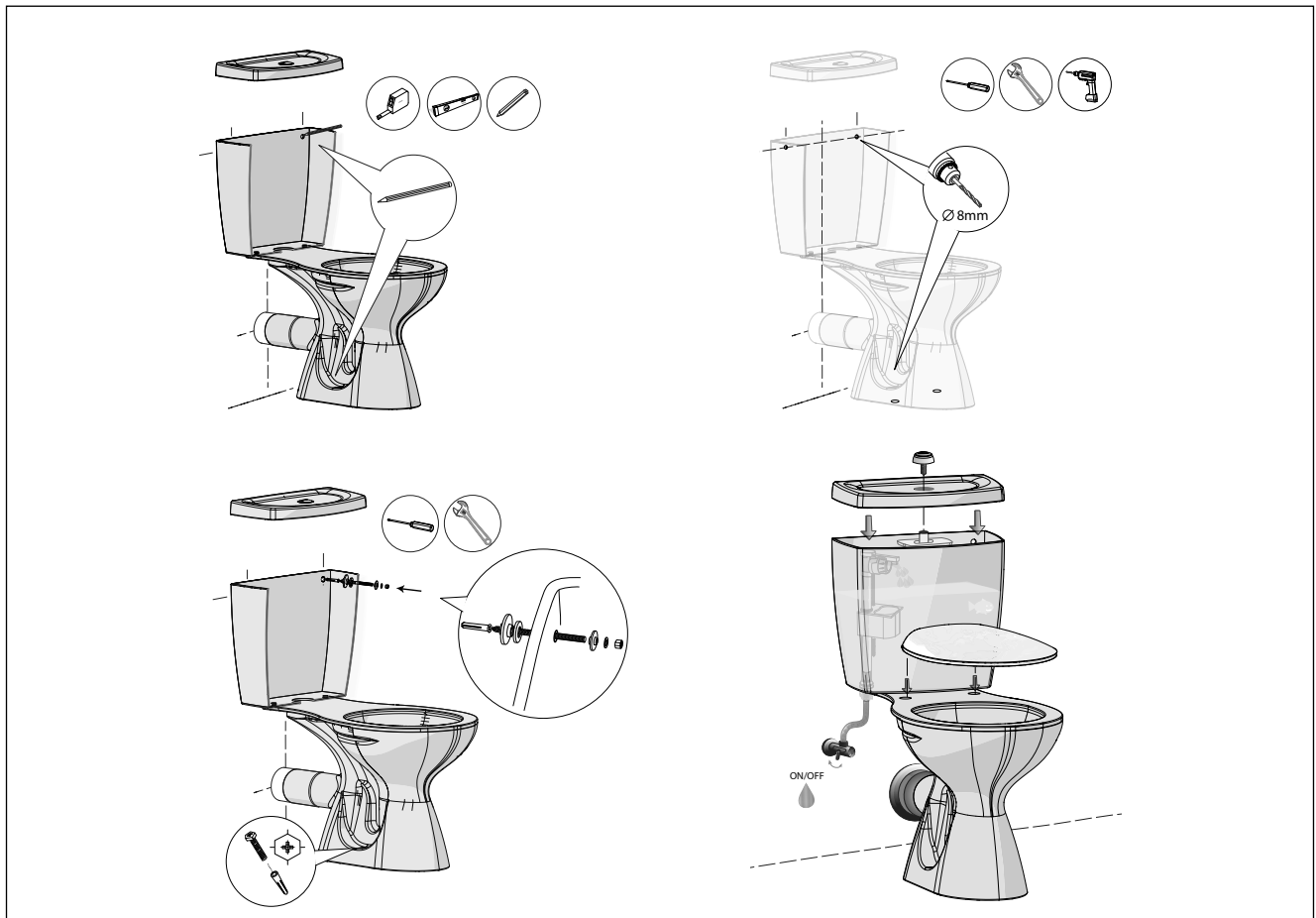
Ensure cistern is clean and dust free before installation. Unscrew the hex nut and washer from the threaded shank. Ensure the washer seal is attached to the threaded shank. Insert the fill valve into the cistern inlet hole vertically. Connect the washer and nut to the fill valve. Do not over-tighten but ensure fill valve is securely fixed, vertically positioned and will not interfere with the other mechanisms. Do not connect flexible hose or water supply until in its final position. Depending on the water level required in the cistern, the float box can be adjusted vertically to suit the water level required.

Do not overtighten.

Do not use any sealing paste and/or compound in any case.

Do not use connector handling the internal part of the inlet valve.

Please refer to inlet valve and flush instructions for guidance before installing the toilet.



Contact Us

AKW
Life Made Better

Orders & Quotes

01905 823 299

orders@akw-ltd.co.uk

General Enquiries

01905 823 298

sales@akw-ltd.co.uk

Technical Enquiries

01905 560 219

tech@akw-ltd.co.uk

Kitchen Enquiries

01905 823 262

kitchens@akw-ltd.co.uk

Fax

01905 823 297

AKW

Pointon Way, Hampton Lovett
Droitwich Spa, WR9 0LR

www.akw-ltd.co.uk

orders.akw-ltd.co.uk

Follow us on Social:



Warranty

Warranty applies only to manufacturing or material defects, conditional on the one-time correct installation of the product. It does not apply to:

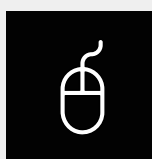
- Inappropriate use or accidental damage.
- Damage or defects that result from incorrect installation.
- Lack of maintenance including the build up of grime or damage resulting from inappropriate cleaning.
- Damage or defects that result from repairs or modifications undertaken by unauthorised persons.
- General wear and tear through usage and does not apply to surface finishes.

Warranty period starts from the date of installation. See the T&Cs on our website for further information.

Select 1 of 2 ways to activate your warranty



1. Scan using your Smart Device



2. Visit Online

akw-ltd.co.uk/warranty-information

What to do if something goes wrong?

In the event that you encounter a problem with this product, follow the trouble shooting guide if applicable, then contact your local installer. If the issue is still unresolved, contact AKW Technical Enquiries who will provide further advice and arrange for a maintenance engineer to visit if necessary. None of the foregoing affects your statutory rights.