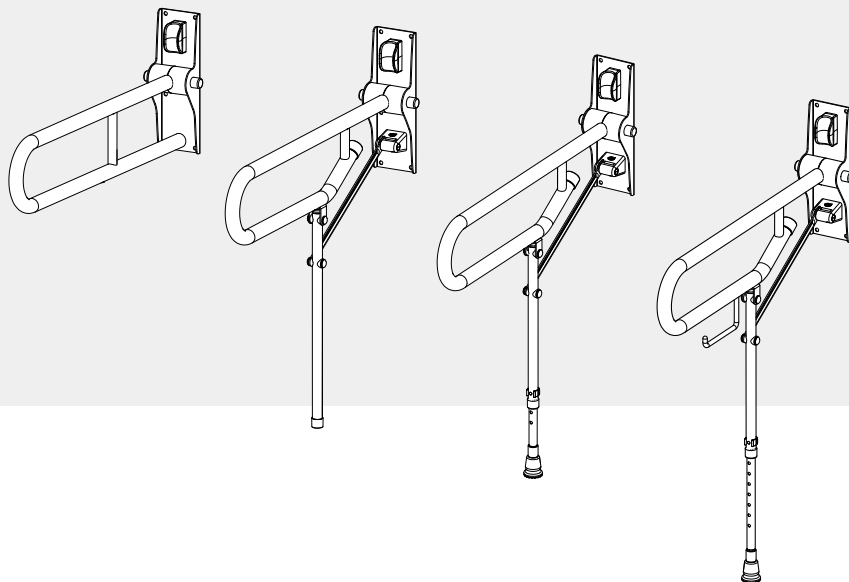


Fold Up Support Rails

INSTALLATION INSTRUCTIONS



Stock Code

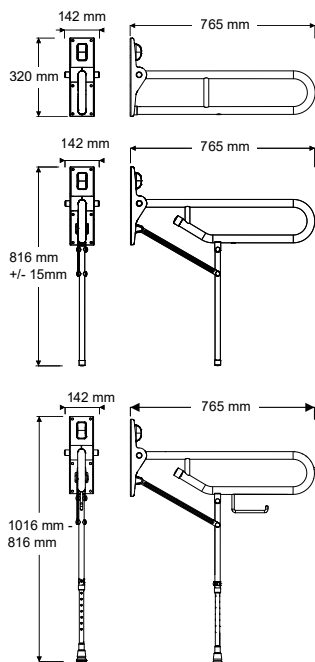
01810WH/BU - 01820WH/BU - 01830WH/BU - 01830SS



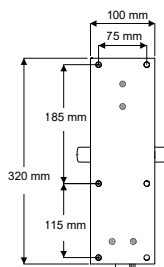
Read all instructions before installation and leave this document with the end user for future reference as it contains important warranty information

Important Information

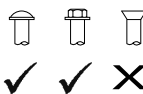
Dimensions



Mounting Bracket



Fixings not included



Do not use countersunk screws

Weight Capacity - Using suitable fixings on a suitable wall surface.

Double support rail:	100kg (220lb/15.75 stone)
Double support rail with support leg:	200kg (441lb/31.5 stone)
Double support rail with adjustable leg:	200kg (441lb/31.5 stone)

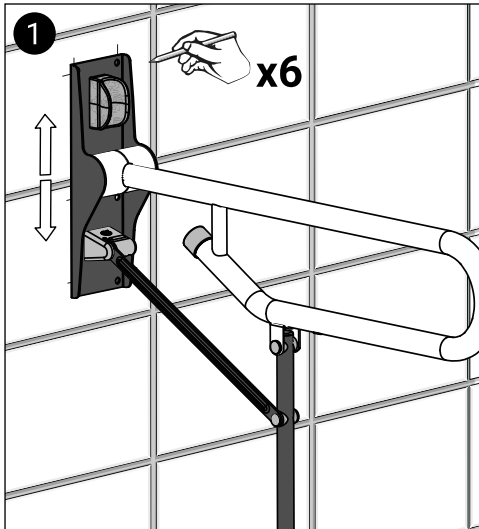
Installation must be carried out in accordance with these instructions, and must be conducted by a qualified and competent installer.

Before you start

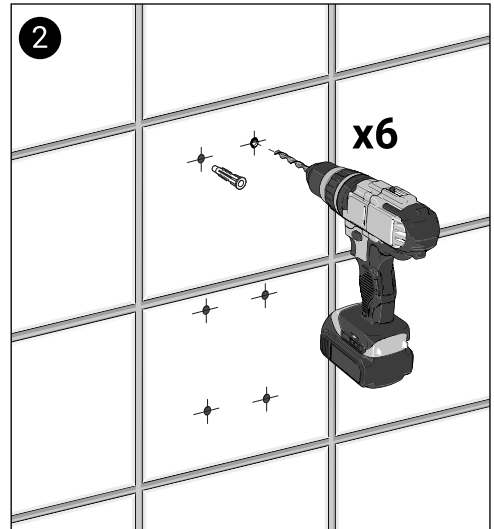
Remove all packaging and examine the product for any damage or manufacturing faults. Notify the retailer immediately if damage or faults are found. Check that all items are present before discarding any packaging. The manufacturer cannot be held responsible for any installation costs that may arise from damaged or faulty products being installed and not in accordance with these instructions. The warranty does NOT cover impact related damage. Please dispose all packaging in accordance with local recycling authorities.

Recommendations

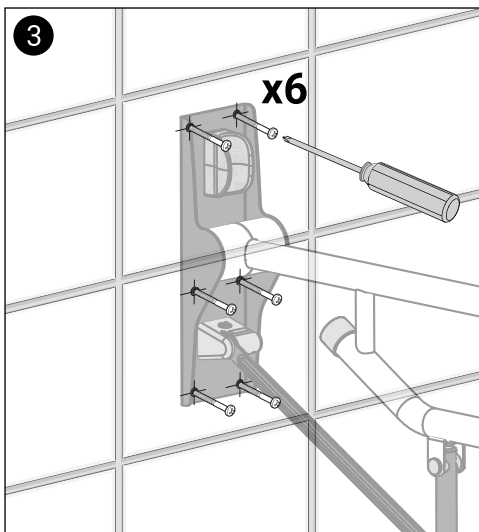
Fold-Up Support Rails are recommended for all internal applications. Rails may be installed in other locations but optimum product life may not be achieved. AKW is unable to specify the type of fixings to be used simply due to the vast number of possible types and conditions of surfaces to which the Fold-Up Support Rail can be attached. Consult a fixing manufacturer, stating the type, construction of the wall surface and the type of Fold-Up Support Rail, if you are unsure of which type of fixing to use. All fixing holes must be used. Dimensions are approximate at the time of manufacture and could change without prior notice. The above recommendations are suggested to promote optimum product life.



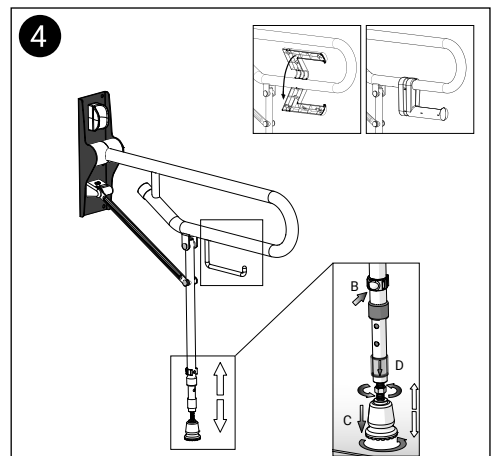
Determine the position and height of the rail. The rail must be level when in the down position and the leg must be vertical. Mark the hole positions on the wall through the mounting plate.



Check for hidden pipework or cables before drilling. Use Masking tape to protect tiles from splintering. Drill suitably sized holes for the fixings being used. Insert wall plugs. Fixing not supplied.



Fasten the mounting bracket to the wall using appropriate fixings. Do not use countersunk screws. Do not over tighten the fixings.



Rails with the adjustable leg can be further adjusted to make sure the foot is level with the floor. Lift the cover (D) and unscrew the adjustment foot (C) until it is tight against the floor. Lock the foot with by tightening the nut up with a spanner. Then slide the cover back down. Check the levels.

Note: Do not use abrasive or strong cleaning chemicals on scouring cloths as this will affect the surface finish.

Contact

AKW
Life Made Better

Orders & Quotes

01905 823 299
orders@akw-ltd.co.uk

General Enquiries

01905 823 298
sales@akw-ltd.co.uk

Technical Enquiries

01905 560 219
tech@akw-ltd.co.uk

Kitchen Enquiries

01905 823 262
kitchens@akw-ltd.co.uk

Fax

01905 823 297

AKW

Pointon Way, Hampton Lovett
Droitwich Spa, WR9 0LR

www.akw-ltd.co.uk
orders.akw-ltd.co.uk

Follow us on Social:



Warranty

Warranty applies only to manufacturing or material defects, conditional on the one-time correct installation of the product. It does not apply to:

- Inappropriate use or accidental damage.
- Damage or defects that result from incorrect installation.
- Lack of maintenance including the build up of grime or damage resulting from inappropriate cleaning.
- Damage or defects that result from repairs or modifications undertaken by unauthorised persons.
- General wear and tear through usage and does not apply to surface finishes.

Warranty period starts from the date of installation. See the T&Cs on our website for further information.

Select 1 of 2 ways to activate your warranty



1. Scan using your Smart Device



2. Visit Online

akw-ltd.co.uk/warranty-information

What to do if something goes wrong?

In the event that you encounter a problem with this product, follow the trouble shooting guide if applicable, then contact your local installer. If the issue is still unresolved, contact AKW Technical Enquiries who will provide further advice and arrange for a maintenance engineer to visit if necessary. None of the foregoing affects your statutory rights.