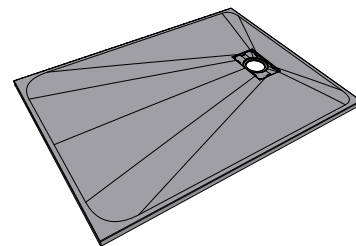


Onyx Low Profile Shower Tray

Installation And User Care Instructions



Read ALL instructions carefully BEFORE installation and leave with the end user

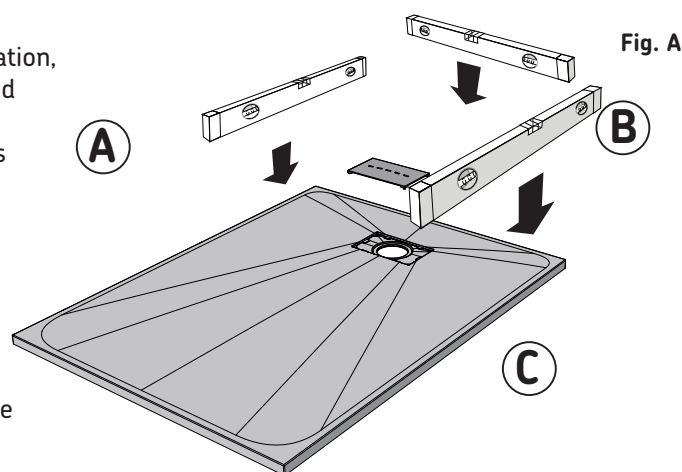
Installer Information - Placement

Suitable for 'on floor' or 'in floor' Installations.

Ensure that the floor levels are tested before and after the installation, water test the flow from tray into waste for correct installation and drainage efficiency. It is important to ensure that the floor is level in all directions before putting the tray into place. If water puddles away from the waste, this is a clear indication that the levels are not correct - that the water must drain towards the waste.

The sides on the tray **A** and **B** may well show level on testing, but if point **C** is low, then water will puddle in the area of point **C** and the only remedy is to level the floor and refit the tray. The tray has 'lands' on all four sides.

Use a spirit level front to back and side to side - all 'lands' must be level (**ABC**) - the fall is moulded into the tray (See Fig. A).



Installer Information - Trimmable trays

- Tray height: 26mm
- Slate finish
- Concealed waste
- Colour coordinated waste cover with slots
- Shallow depth waste
- High water flow rate (30 l/min)
- Weight load : 200kg
- Impact resistance
- Webbed back reinforcements
- Material : SMC (Sheet Moulding Compound)

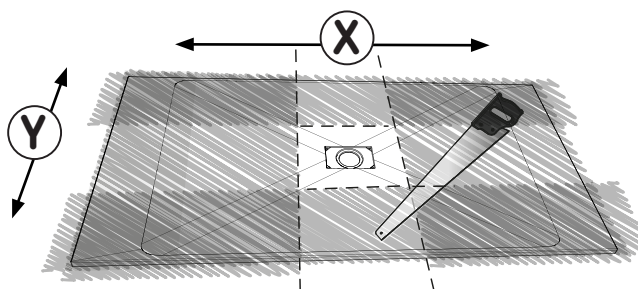
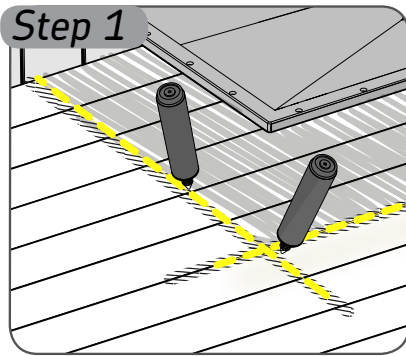


Fig. B

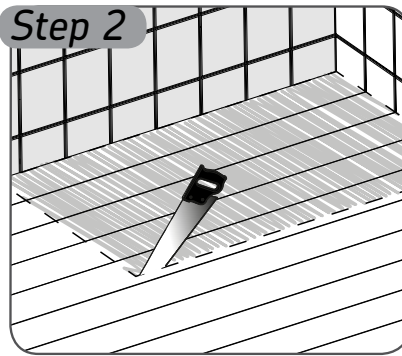
Trimmable (within 150mm of waste)

If trimming is absolutely necessary to avoid obstructions or tricky installations then Onyx trays can be trimmed down to 150mm of the waste cover area. The sides on the tray **X** and **Y** shown in Fig. B are shaded out to show the trimmable areas.

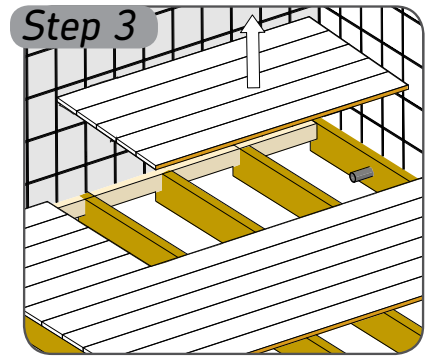
Installing into Wooden Floors



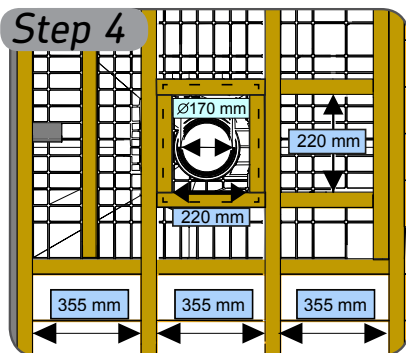
1. Position the tray over the desired location for the shower and mark around the edge of the shower former.



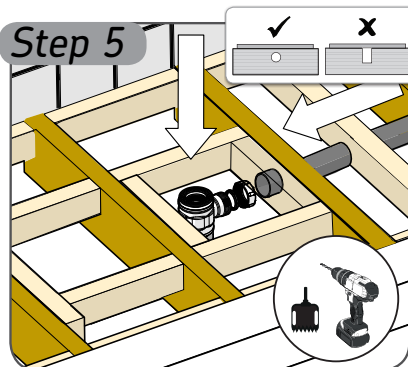
2. Cut into the flooring, taking care not to cut through supporting joists or any plumbing or electrical wiring.



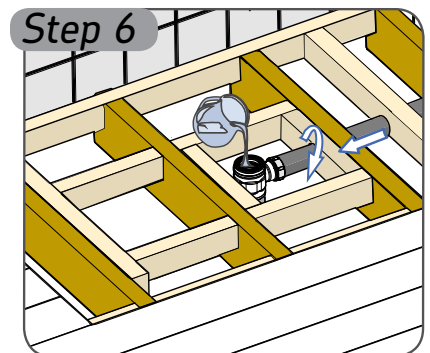
3. Carefully remove the floor boards. Locate the waste outlet pipe.



4. The waste area must be supported with additional noggins 220 mm around the waste. Additional noggins or joists must be used on all edges and between joists centres at a minimum of 350 mm.



5. Do not cut into the joists, always drill through when installing the waste drain trap and waste outlet pipe.



6. Water test the waste drain trap for flow and for any leaks and ensure that the rubber seals are in place.

7. The tray should be bedded onto flexible adhesive on the joists and checked it is level and supported on all 4 sides.

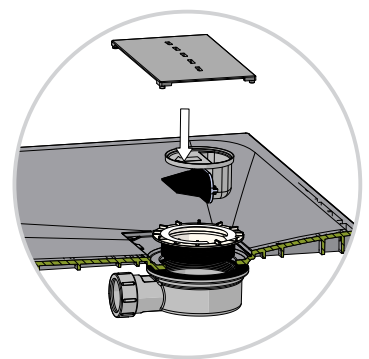
The waste clamping ring should now be fitted to secure and seal the waste to the tray. Install the waste trap to the tray, see separate waste instructions. The waste cover should now be secured in place.

Re-check tray is level and test for water drainage efficiency of tray.

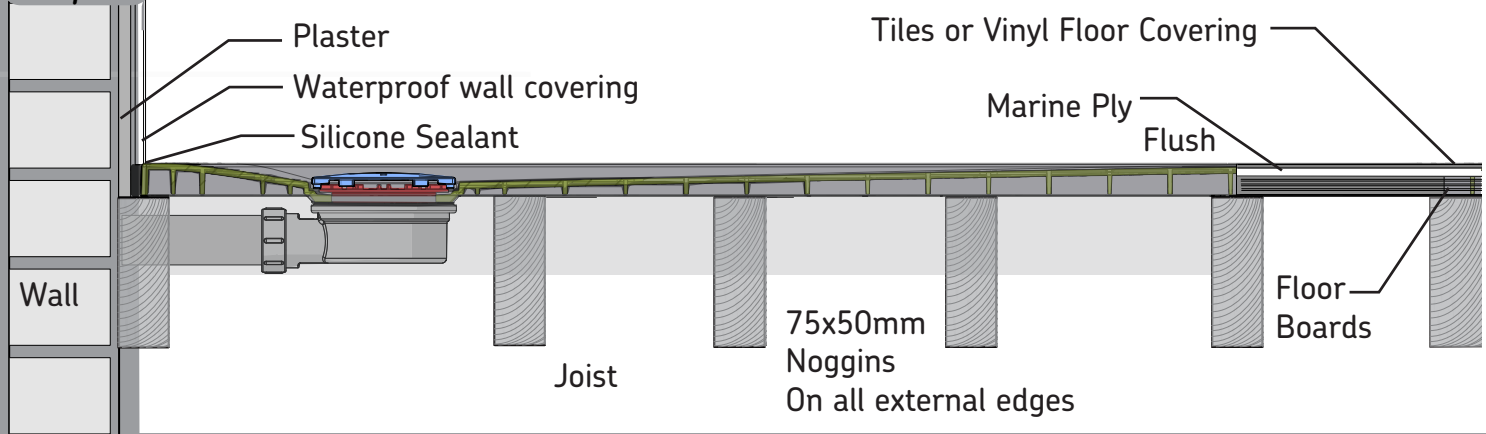
Vinyl floor covering or tiles should finish flush and up to the tray as shown below.

The flooring should be laid up to the edge of the tray and sealed with silicone sealant.

The walls should be covered with the waterproof wall covering and then sealed to the tray with silicone sealant.



Step 7



Installing into solid floors or onto concrete or wooden flooring

1. Position the tray onto floor over the desired location for the shower tight against plaster finish on the back walls in order to provide a seal. Mark around the waste area and the tray edges on the floor. Plan the waste outlet position.

When installing the tray into solid floors.

2. Remove the tray and start to remove any tiling or vinyl flooring to expose the concrete flooring. Cut along marked area taking care not to cut through any pipework or any electrical wiring which may be buried below.

3. Dig out the floor area and remove any hard material to allow for the tray, waste and outlet pipe. Remove the flooring to allow the installation of the waste and the outlet pipe with a fall of at least 1 in 40. When using the low depth waste, dig out approximately 60mm (2 1/2") depth needed under the waste position to allow installation. It may be necessary to remove some more flooring material to achieve this result. Connect the waste to the outlet pipe.

4. Test the waste trap drainage and for leakages by pouring water into the waste trap before fitting to the tray. Sand and cement should be used to raise the tray to the finished floor height and ensure this is level. Allow this mix to set. The tray should be bedded onto flexible adhesive, applied to the subscreed to hold the tray firmly in position and level. Do not dot and dab. Foam should not be used as a load bearing support as it will break down under repeated product use.

5. Lower the tray over the waste and check the waste drain position and test that all 4 edges of the tray are level. The edges of the tray must finish flush and level with the top of the finished floor covering.

6. Connect the waste drain to the tray using the clamping ring. See separate waste instructions. The waste cover should now be secured in place and protected for the rest of the installation.

When installing the tray onto concrete or wooden floors.

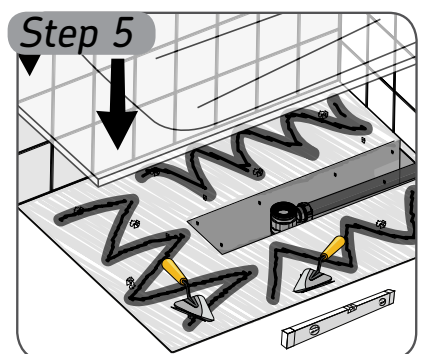
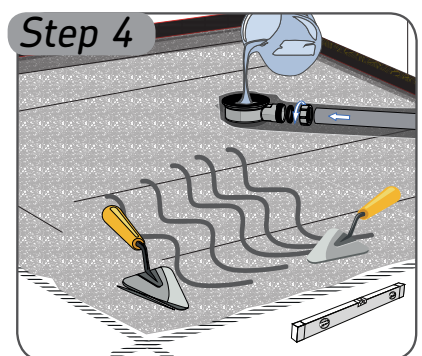
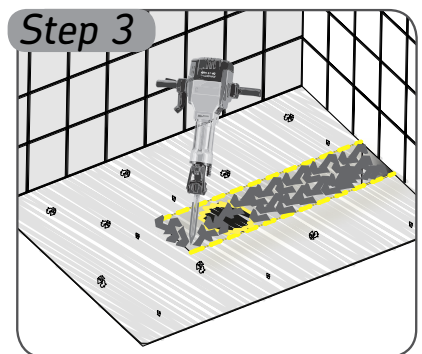
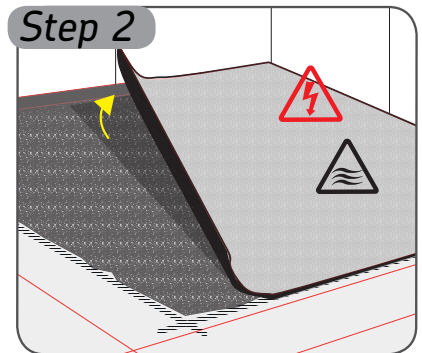
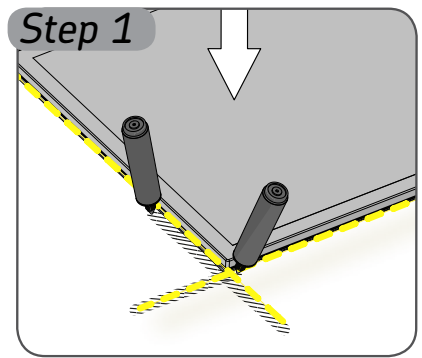
2. Remove the tray and start to remove any tiling or vinyl flooring to expose the concrete or wooden flooring. The floor finish must clean, level and it must fully support the tray on all sides.

3. Remove the floor material to allow the installation of the waste and the outlet pipe with a fall of at least 1 in 40. Always follow separate waste installation instructions during installation. Connect the waste to the outlet pipe.

4. Test the waste trap drainage and for leakages by pouring water into the waste trap before fitting to the tray. The tray should be bedded onto flexible adhesive.

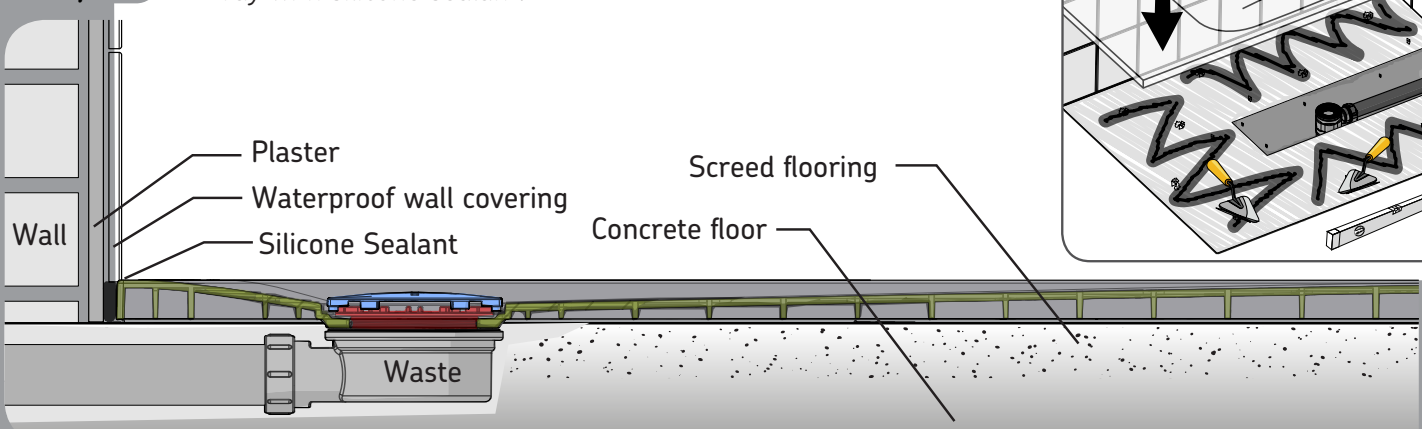
5. Lower the tray over the waste and check the waste drain position and test that all 4 edges of the tray are level.

6. Connect the waste drain to the tray using the clamping ring. See separate waste instructions. The waste cover should now be secured in place and protected for the rest of the installation.



Step 6

The flooring should be laid up to the edge of the tray and sealed with silicone sealant. The walls should be covered with the waterproof wall covering and then sealed to the tray with silicone sealant.



IMPORTANT SAFETY INFORMATION



ALWAYS read these installation instructions carefully before installing this product and leave with the end user for future reference.
ALWAYS have the tray installed by a trained and experienced installer. Always contact the installer in the first instance if a problem should arise.



ALWAYS support the waste area with additional joists.
Evenly support the edges of the tray when installing into the floor. Weight must be evenly spread across the shower tray.



Do not stand on the shower tray before the tray has finally set/cured and finished with tiles.
This will effect the fall of the water drainage to the shower waste.



Caution Check for electrical cables and water pipes before cutting into floor boards or drilling into surfaces. Turn off the mains electric supply before starting any work.



Beware A pinch hazard may be present around the edges during installation.



Never use power tools if you are standing in water or on a wet surface. Caution when using power tools when indoors and in wet rooms areas can be still be dangerous. Only use cordless power tools that are double insulated.



Technical Help line
01905 560219

Orderline
01905 823299

General Enquiries
01905 823298

Website
www.akw-ltd.co.uk

Quotes & orders email
orders@akw-ltd.co.uk

Enquiries email
sales@akw-ltd.co.uk
technicalenquiries@akw-ltd.co.uk

Post
AKW, Pointon Way,
Hampton Lovett,
Droitwich Spa,
WR9 0LR



For the latest AKW product news scan this QR code with your device.

*Guarantee

The guarantee applies only to manufacturing or material defects and does not apply to normal wear and tear, inappropriate use or accidental damage. Damage or defects that result from incorrect installation, improper use, accidental damage or lack of maintenance including the build up of grime, dirt or lime-scale and water-borne debris. Damage from point weight loading such as shower seat or stools. Damage resulting from inappropriate cleaning or water ingress. Damage or defects that result from repairs, modifications undertaken by unauthorised persons who are not AKW authorised service staff or service engineers.



What to do if something goes wrong?

In the unlikely event that you should encounter a problem with this product, please contact your local installer and if this does not resolve the issue then contact AKW technical team who will provide further advice and if necessary arrange for our service engineer to visit or discuss our comprehensive aftersales service.

As part of our quality and training program calls may be monitored or recorded. None of the foregoing affects your statutory rights.

These instructions are provided to advise the minimum standards of installation and recommends what is the best practice for the installation. Due to the very wide variability of possible installation conditions AKW cannot provide all circumstances for the installation. AKW cannot accept any liability in connection with this information or its use. This information is provided on the condition that the person receiving it shall make their own tests to determine the suitability for their particular purpose. Failure to install this AKW product in accordance with supplied instructions or the making of unauthorised modifications will invalidate any warranty and may affect product safety. None of the foregoing affects your statutory rights.

Failure to install this AKW product in accordance with supplied instructions or the making of unauthorised modifications will invalidate any warranty and will affect product safety.