

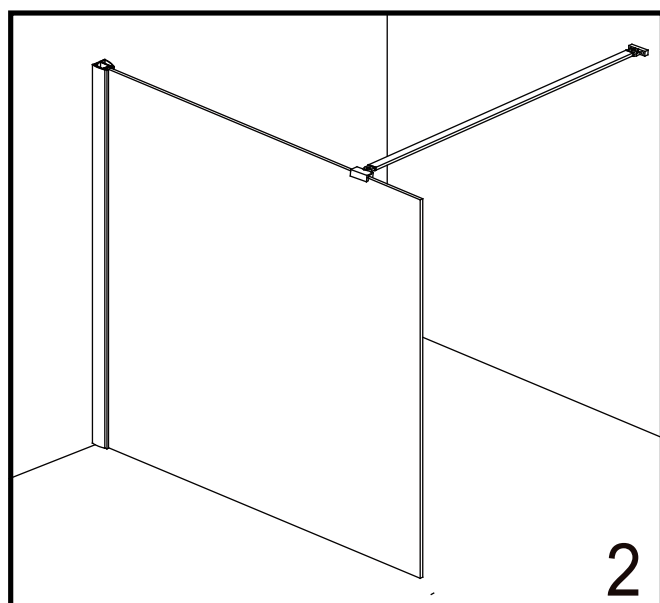
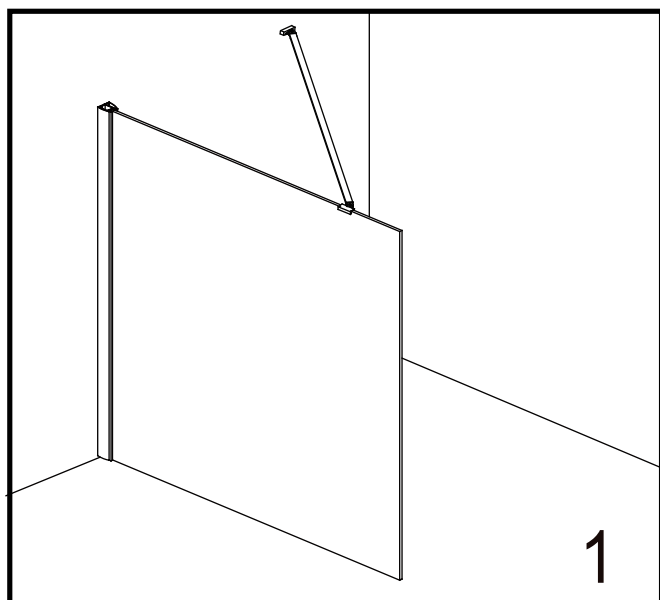
identiti

Wetroom Panel

april
PRODUCTS

INSTALLATION INSTRUCTIONS

www.aprilproducts.co.uk



Lifetime Product Guarantee

ATTENTION!

Are you fitting this April enclosure to an April shower tray?

The Lifetime Product Guarantee is only valid when an April enclosure is fitted with an April shower tray and are used and maintained in accordance with the manufacturer's instructions (guarantee excludes seals and magnets).

When April enclosures are used with any other shower tray the guarantee period is limited to 10 years.

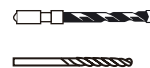
Please see our website for full Terms & Conditions.

To activate your Product Guarantee please visit www.aprilproducts.co.uk and complete the online form.

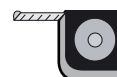
Tools Required



Drill



8mm Masonry Drill
2.75mm HSS Drill



Tape Measure



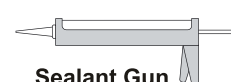
Spirit level



PH2 TYPE
Screwdriver



Pencil



Sealant Gun

Please note hand tools **NOT** supplied.

IMPORTANT

The screen can be constructed either way up, for left or right hand opening.

These instructions assume that installation is done against solid/tiled walls.

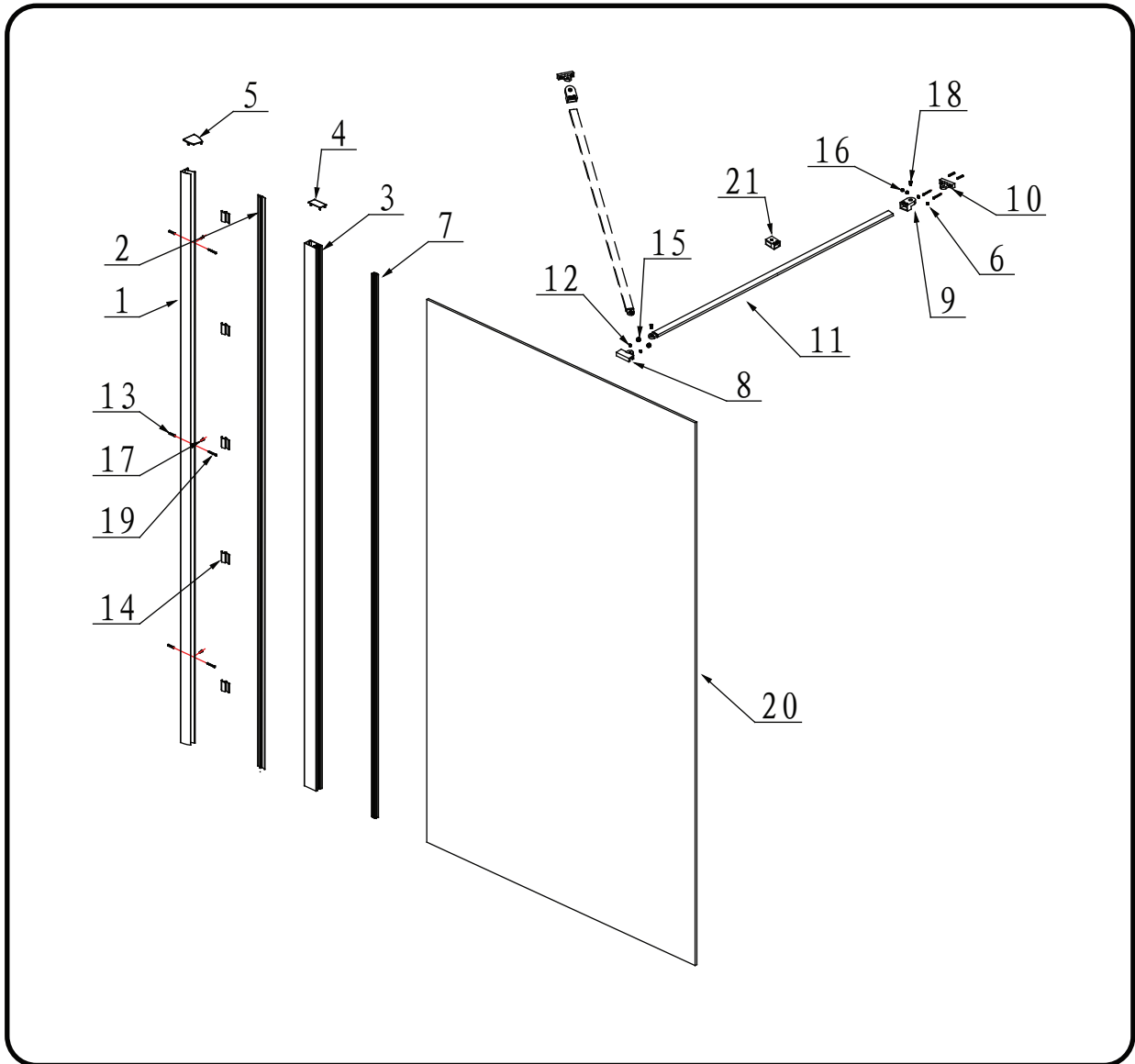
The wall plugs supplied with the installation kit are for use on solid walls. Hollow or stud -partition walls will require alternative fixings. Please consult with a reputable trades person or hardware supplier for the correct type of fixing.

It may also be necessary to consult your tiling supplier about the correct method for drilling your tiles.

Please check this product for damage prior to starting the installation. No claims can be made after the product has been fitted. This is a 2 person installation. Please note the minimum and maximum adjustment for this product are based on perfectly plumb walls.

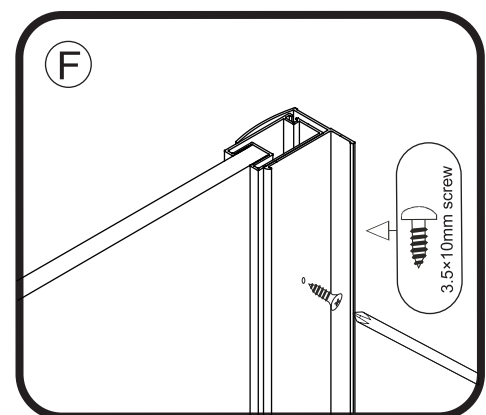
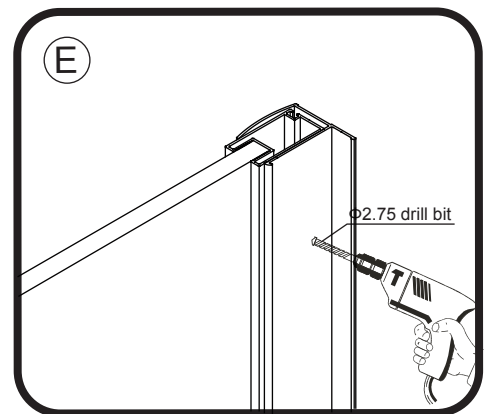
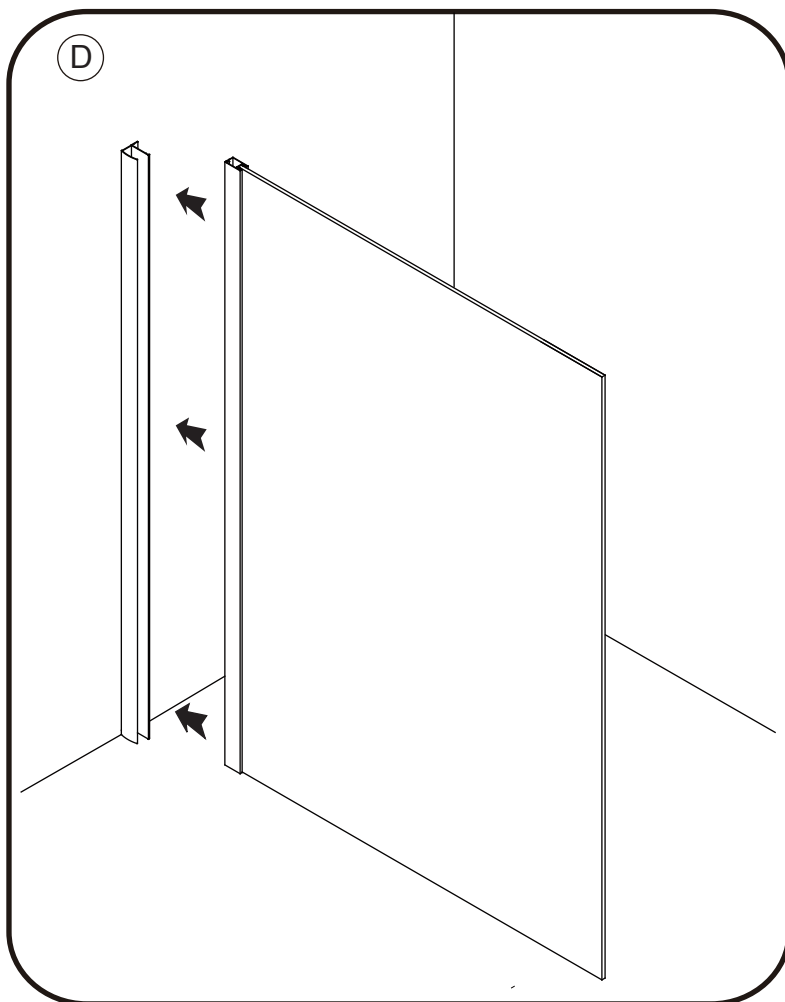
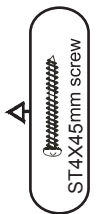
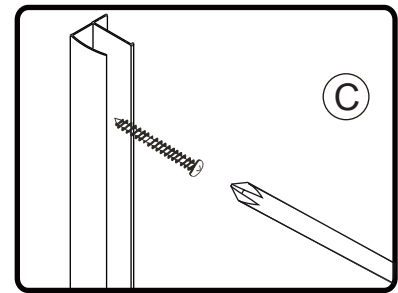
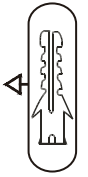
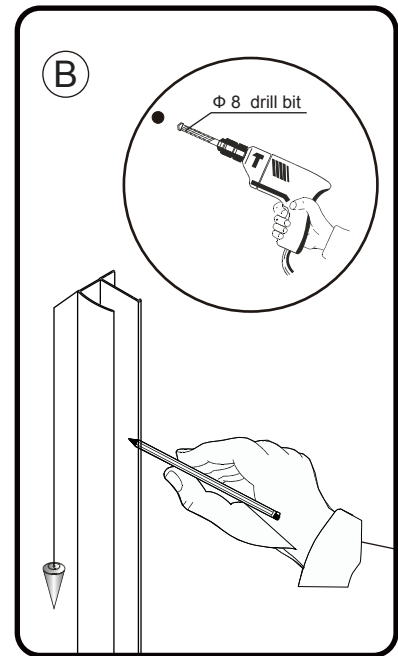
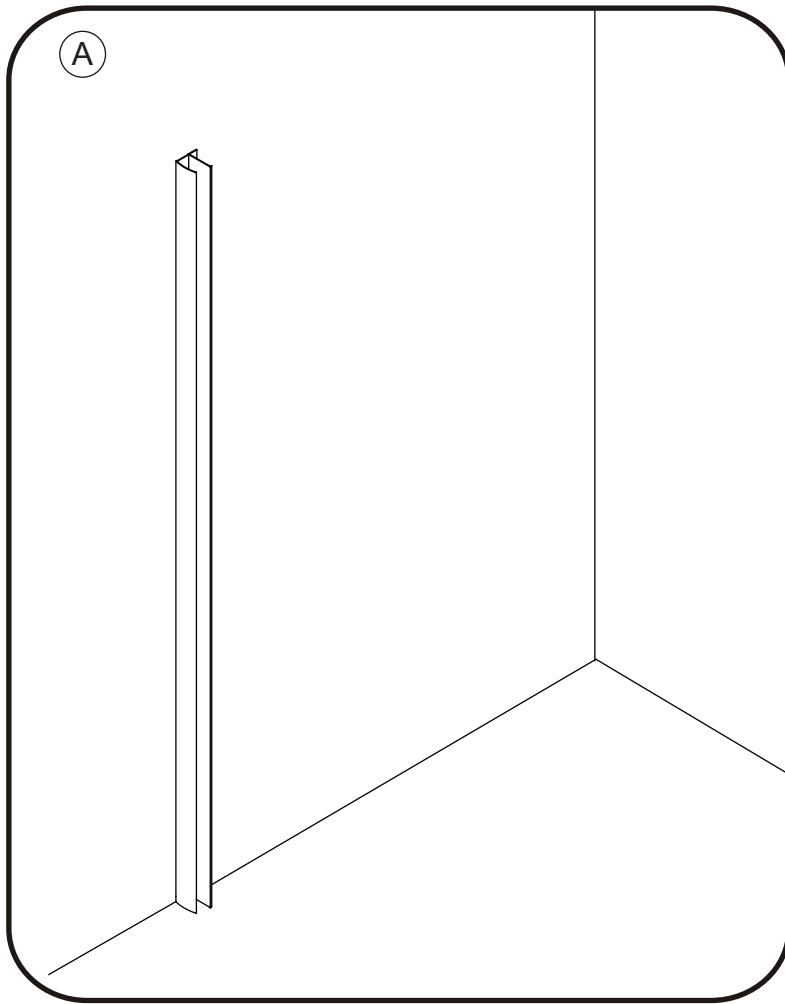
USE SAFETY EYE-WEAR WHEN DRILLING

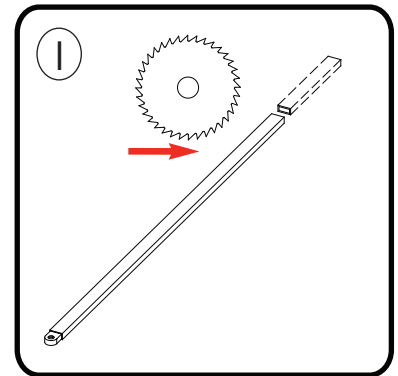
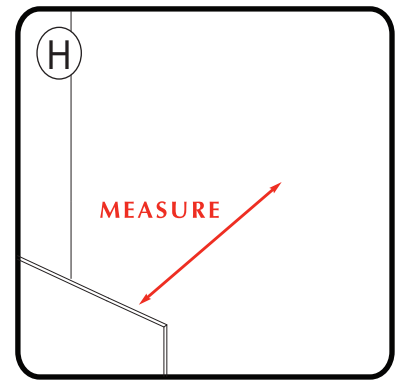
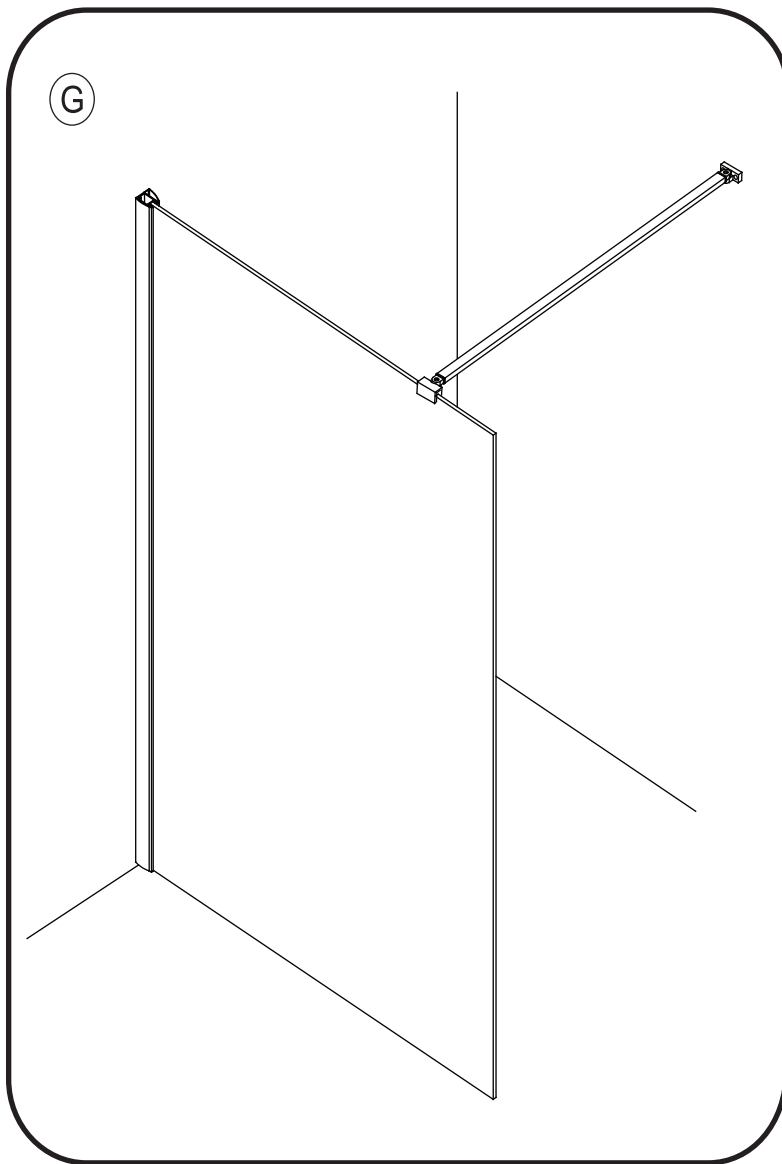
COMPONENTS AND BOX CONTENTS



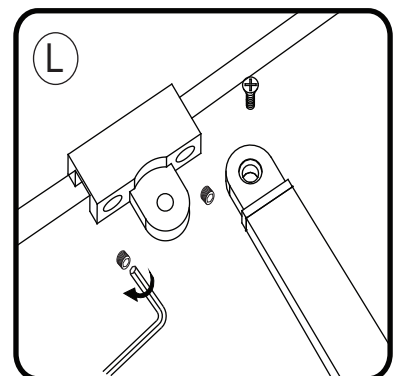
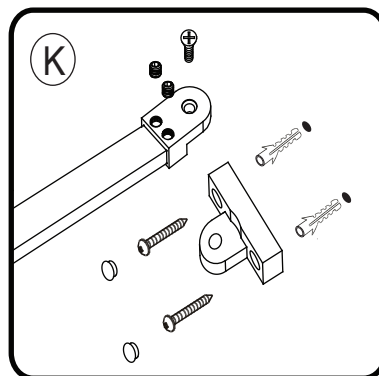
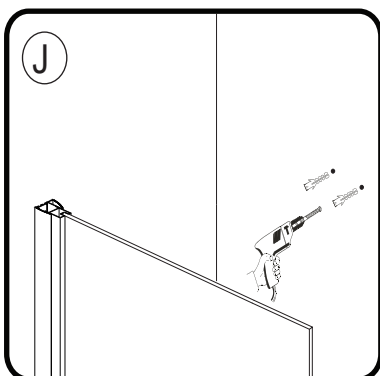
Box Contents

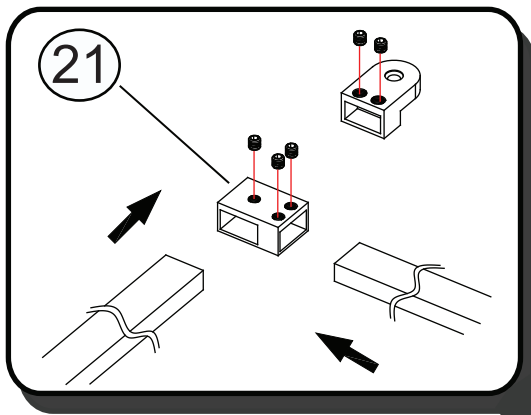
NO.	Description	Qty	NO.	Description	Qty
1	Wall Profile	1	12	Gasket	2
2	Cover Profile	1	13	Wall Plug	5
3	Upright Profile	1	14	Profile Clip	5
4	Upright Profile Cap	1	15	Screw M8x6	2
5	Wall Profile Cap	1 SET	16	Screw M5x5	5
6	Cover Cap	2	17	Screw ST3.5x10	3
7	U Shape Seal	2m	18	Screw M5x12	2
8	Glass Clip	1	19	Screw ST4x45	5
9	Connector	1	20	Side Glass Panel	1
10	Wall Fixing	1	21	Joining Piece	1
11	Support Arm	1			





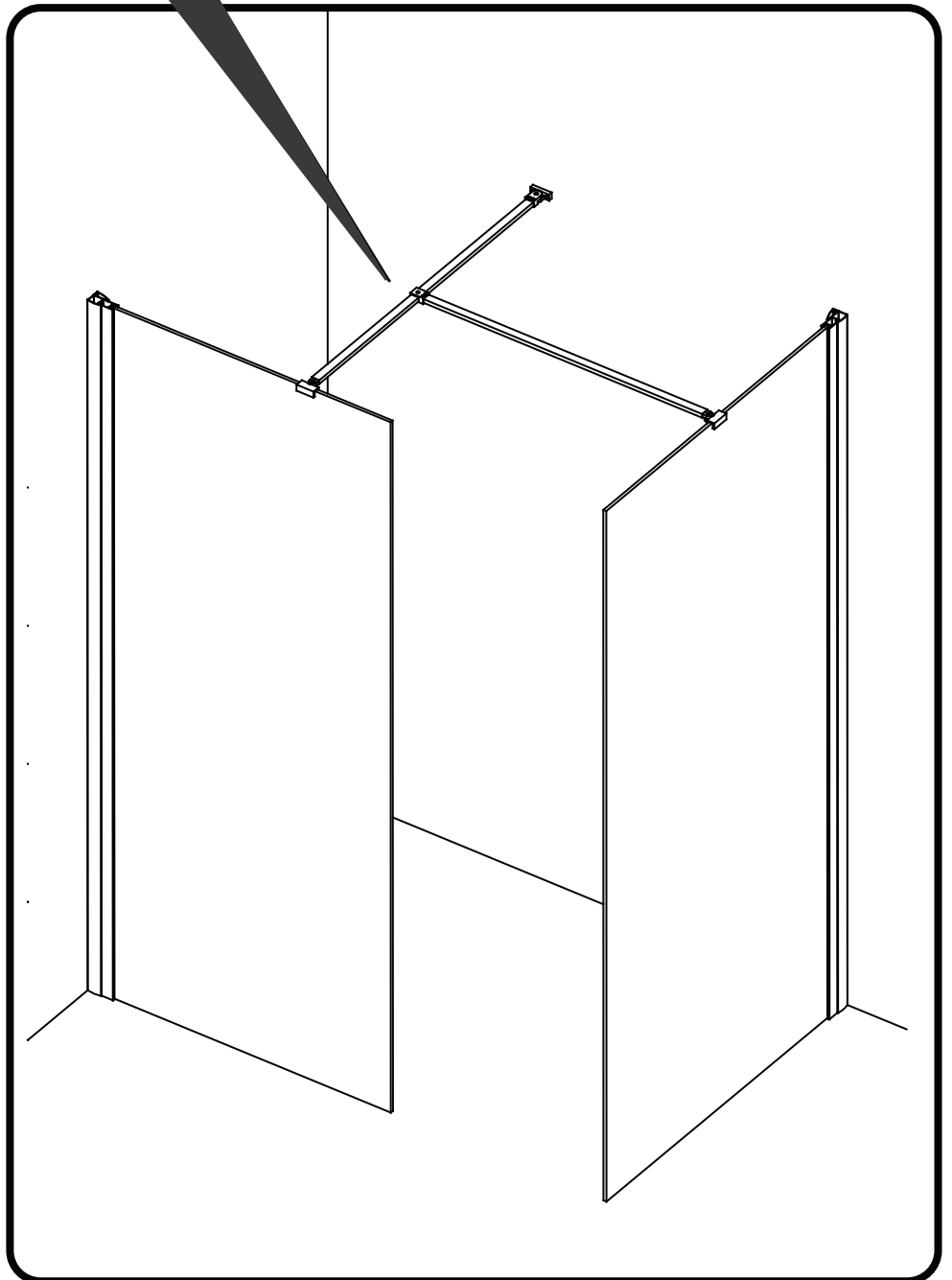
The support arm is supplied in a 1 metre length. It can be cut down to size as required



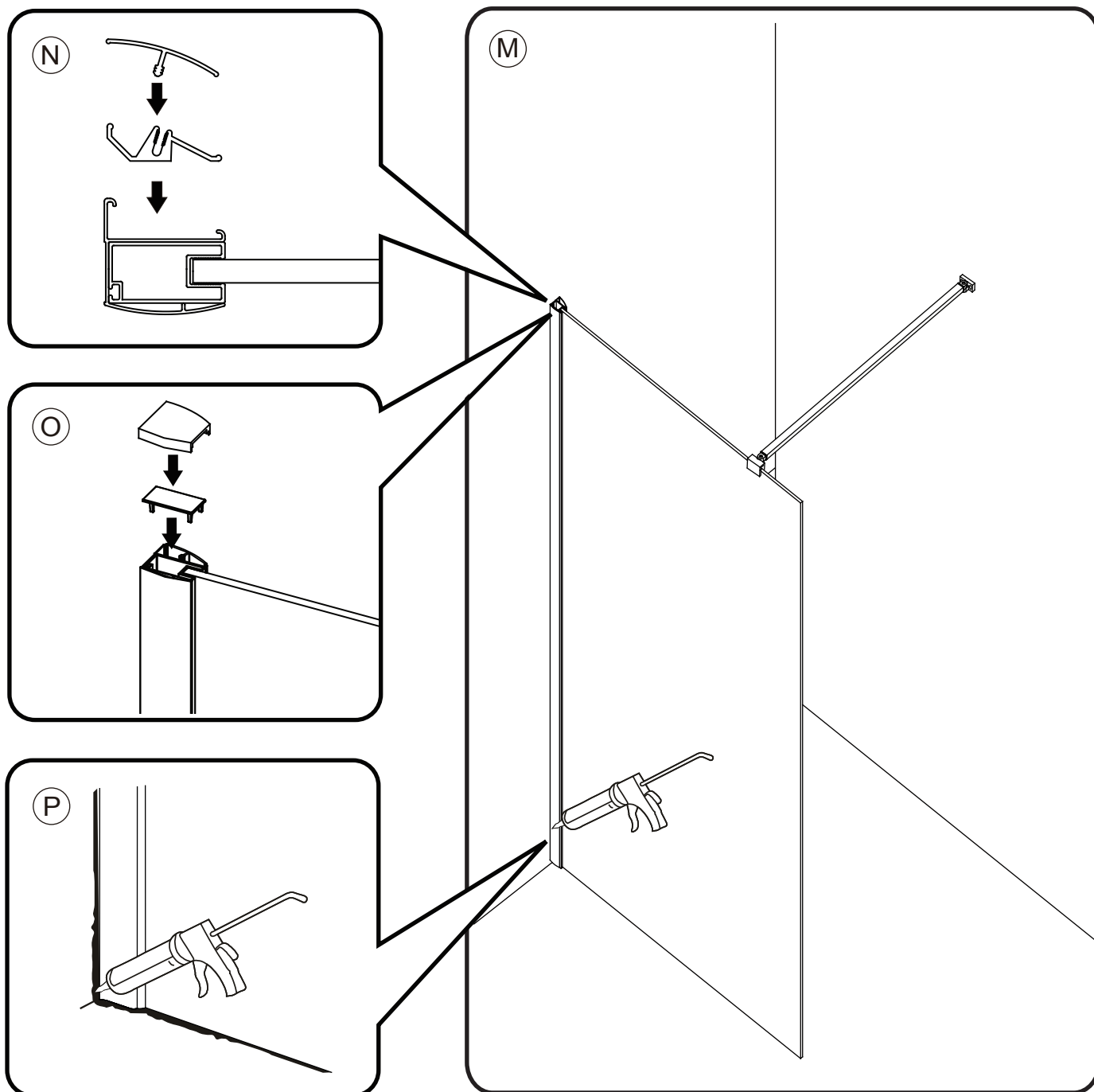


Joining Piece Assembly Guide

The joining piece can be used to connect two support arms as shown in the diagram below.



Push 5 x Profile Clips in to the wall profile and evenly space. then push the Cover Profile into the Profile Clips.



24 HRS



**DO NOT USE THE
ENCLOSURE FOR
24 HOURS AFTER
SEALING**

Applying Silicone Sealant

Sealing Inside

Seal from the top of the wall profile to the bottom on the **INSIDE** between the wall profile and the wall.

IMPORTANT: Do not apply sealant on inside of the tray.

Sealing Outside

Seal from the top of the wall profile to the bottom between the wall profile and tiles on both sides. Also seal along the bottom where the frame meets the tray. Seal the joints between the bottom profile and any upright profiles.

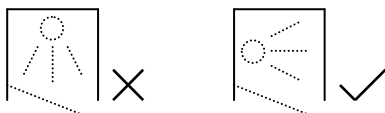
AFTERCARE

Cleaning Instructions

It is important to clean your April shower enclosure after every use. Please wipe down all glass and metal parts with a clean soft cloth. Ensure that all residual water on the glass is removed after every use.

Usage

For reliable, watertight performance from your April enclosure your shower head should not be positioned so that the shower sprays directly onto the enclosure door. Failure to comply with this may cause the shower to leak. Outward opening doors may cause water to drip onto the floor, please ensure that the floor covering immediately outside the enclosure will not be affected by water.



This product has been treated with Clean & Clear™ easy clean glass treatment, a protective barrier which creates a 'non-stick' surface on your glass, helping to resist lime scale build up and water spots. For further information on Clean & Clear™ please visit www.aprilproducts.co.uk

Aftercare

Clean & Clear™ glass can be cleaned with any suitable nonabrasive glass cleaner - with PH value of between 3-11; the coating will not be damaged. Avoid surfactants and heavily perfumed products. Vinegar and water based products are very effective. Do not use abrasive scrubbing cleaners or equipment for cleaning.

Warranty

Limited 5 year Warranty for Clean & Clear™ treatment: To guarantee treated surfaces will remain more repellent than untreated glass for 5 years from start of use, as long as basic manufacturer maintenance recommendations are followed and no harsh or abrasive cleaners are used.

Aftercare & Reapplication Kit

To continue the benefits of the Clean & Clear™ glass treatment an aftercare & reapplication kit is available at www.aprilproducts.co.uk