

identiti

## U Shape Quadrant

april<sup>®</sup>  
PRODUCTS

# INSTALLATION INSTRUCTIONS

[www.aprilproducts.co.uk](http://www.aprilproducts.co.uk)

### Lifetime Product Guarantee

#### ATTENTION!

Are you fitting this April enclosure to an April shower tray?

The Lifetime Product Guarantee is only valid when an April enclosure is fitted with an April shower tray and are used and maintained in accordance with the manufacturer's instructions (guarantee excludes seals and magnets). When April enclosures are used with any other shower tray the guarantee period is limited to 10 years.

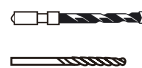
Please see our website for full Terms & Conditions.

To activate your Product Guarantee please visit [www.aprilproducts.co.uk](http://www.aprilproducts.co.uk) and complete the online form.

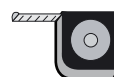
### Tools Required



Drill



7 mm Masonry Drill  
3.2 mm HSS Drill



Tape Measure



Spirit level



**PH2 TYPE**  
Screwdriver



Pencil



Sealant Gun

Please note hand tools **NOT** supplied.

### IMPORTANT

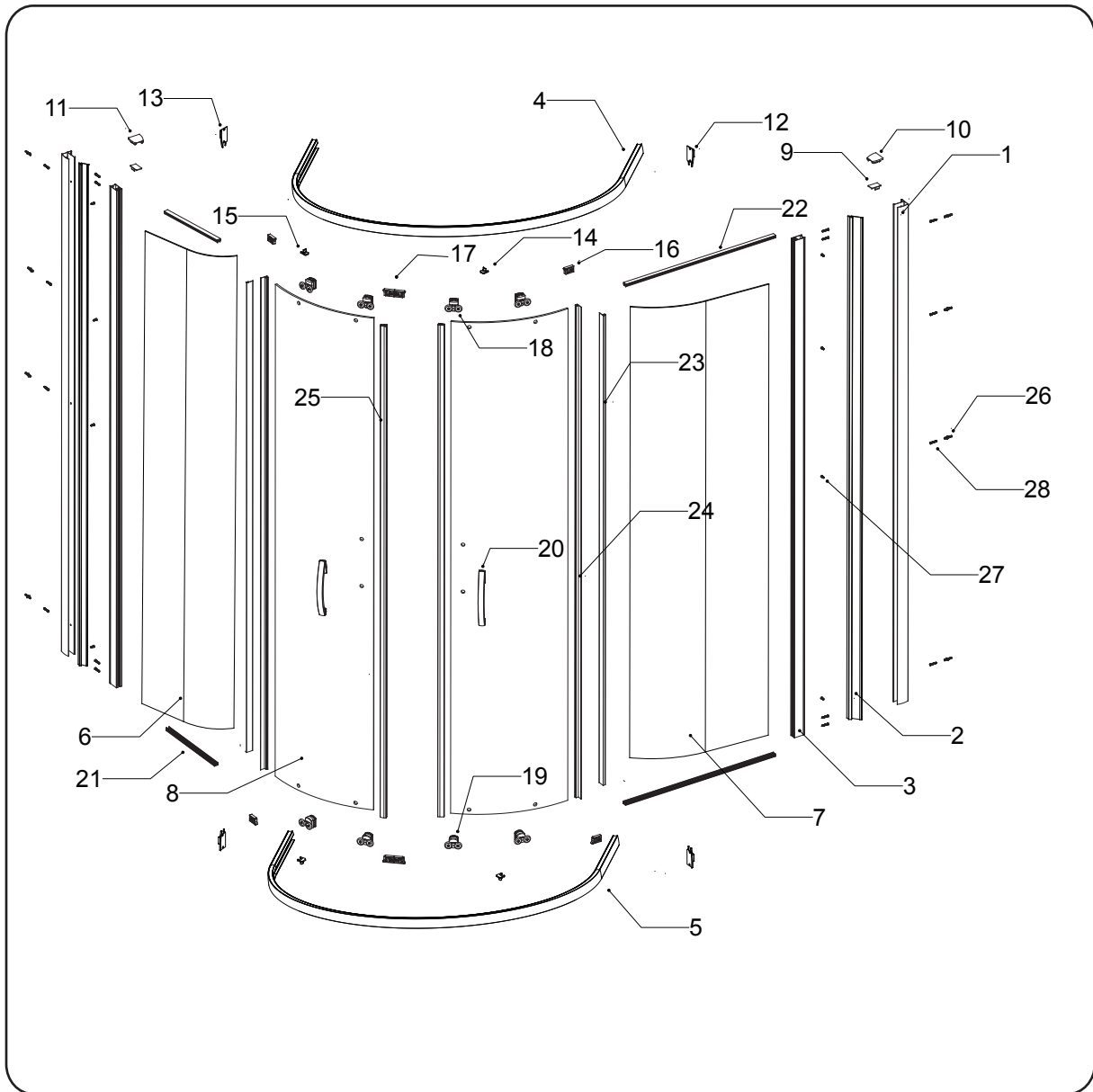
These instructions assume that installation is done against solid/tiled wall.

The wall plugs supplied with the installation kit are for use on solid walls. Hollow or stud-partition walls will require alternative fixings. Please consult with a reputable trades person or hardware supplier for the correct type of fixing.

It may also be necessary to consult your tiling supplier about the correct method for drilling your tiles.

Please check this product for damage prior to starting the installation. No claims can be made after the product has been fitted. This is a 2 person installation. Please note the minimum and maximum adjustment for this product are based on perfectly plum walls.

**USE SAFETY EYE-WEAR WHEN DRILLING**

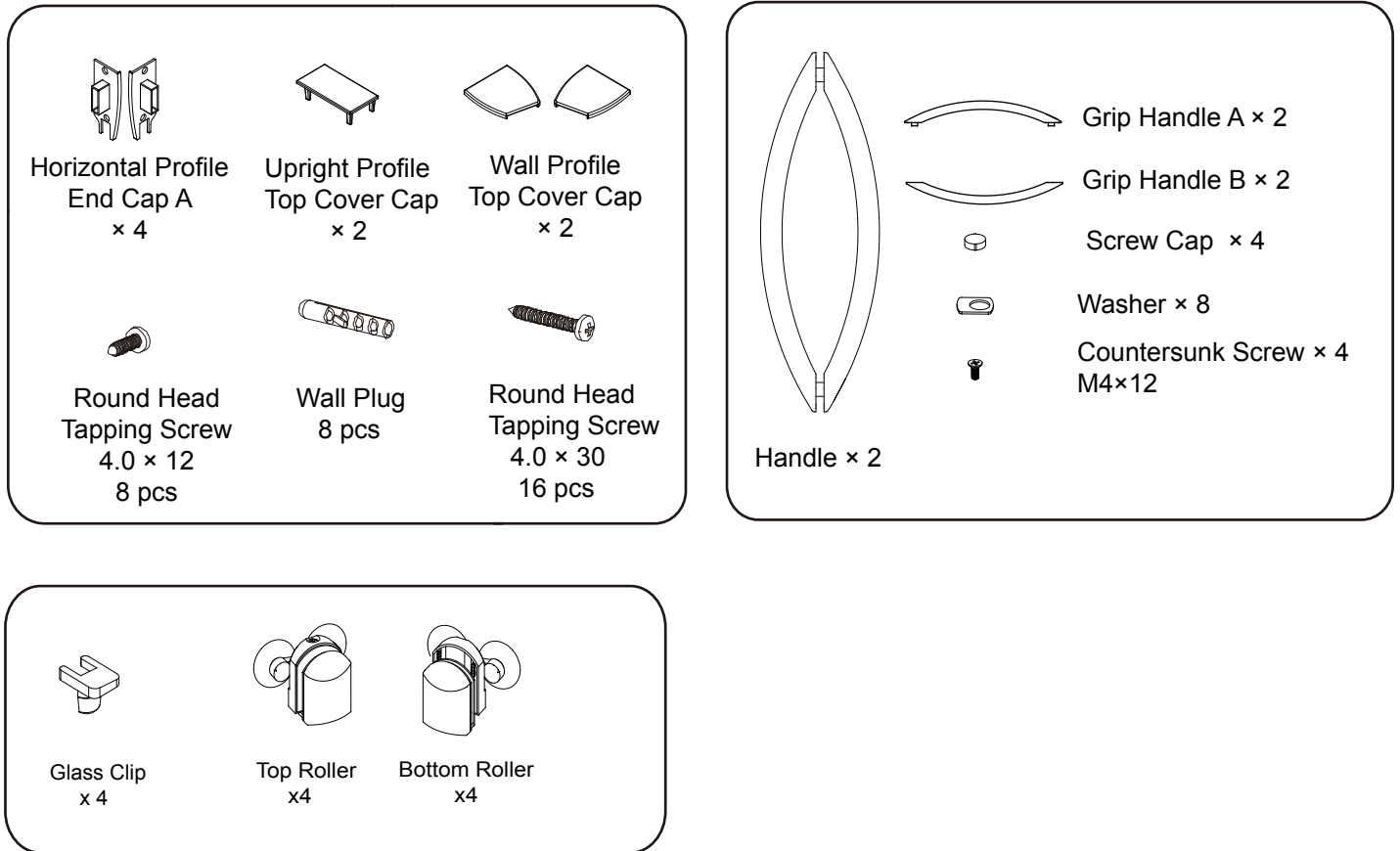


## Box Contents

NO.	Code	Description	Qty	NO.	Code	Description	Qty
1	ID2PF001	Wall Profile	2	16	ID2FT032	Roller Buffer - L	4
2	ID2PF002	Cover Strip	2	17	ID2FT033	Roller Buffer - R	4
3	ID2PF017	Upright Profile	2	18	ID2FT001	Top roller	4
4	ID2PF035	Top Profile	1	19	ID2FT002	Bottom roller	4
5	ID2PF036	Bottom Profile	1	20	ID2FT040	Handle	2
6	ID2GS014	Fixed Glass Panel A	1	21	ID2SL008	Gasket for fixed glass panel A	2
7	ID2GS016	Fixed Glass Panel B	1	22	ID2SL010	Gasket for fixed glass panel B	2
8	ID2GS020	Moving Glass Panel	2	23	ID2SL021	Vertical Seal for Fixed Glass Panel	2
9	ID2FT003	Upright Profile Cap	2	24	ID2SL022	Vertical Seal for Moving Glass Panel	2
10	ID2FT008	Wall Profile Cap - LH	1	25	ID2SL025	Magnetic Strip Moving Glass Panel	2
11	ID2FT009	Wall Profile Cap - RH	1	26	APTL001	Wall Plug	8
12	ID2FT024	End Cap A - L	2	27	APTL008	Screw ST3.5x10	18
13	ID2FT025	End Cap A - R	2	28	APTL009	Screw ST4.0x30	14
14	ID2FT028	Glass Edge Cover - L	2				
15	ID2FT029	Glass Edge Cover - R	2				

**Note:** Further part details for fixing kit available on page 2

## FIXING KIT



## IMPORTANT - Missing Components

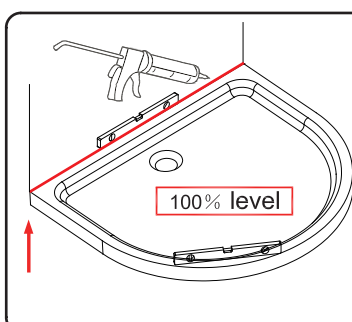
Please check this product for missing components prior to installation.

For spare parts visit [www.aprilproducts.co.uk](http://www.aprilproducts.co.uk)

## IMPORTANT - Installation site

1. Ensure the top surface of the shower tray on which the enclosure will be installed is level in every direction.
2. The tiles or other wall finishing should be effectively sealed at tray edges.
3. Tiles should extend at least to the corner of the tray and a minimum of 1.9 metres from the top of the tray.

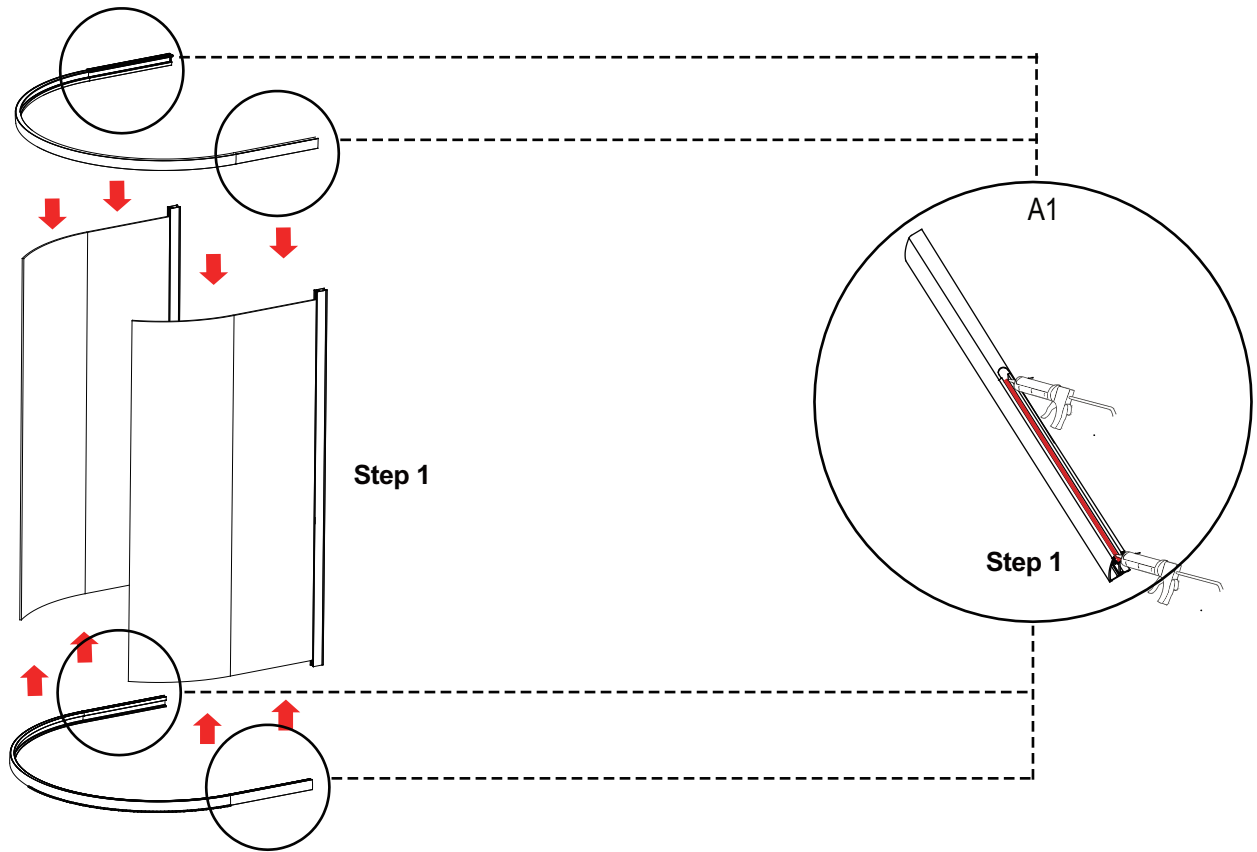
## PROCEDURE



### TRAY MUST BE 100% LEVEL IN ALL DIRECTIONS

Ensure the shower tray is level in all directions and is properly sealed to the wall. The wall must be tiled down to the top edge of the tray. **Do not angle out bottom tile.**

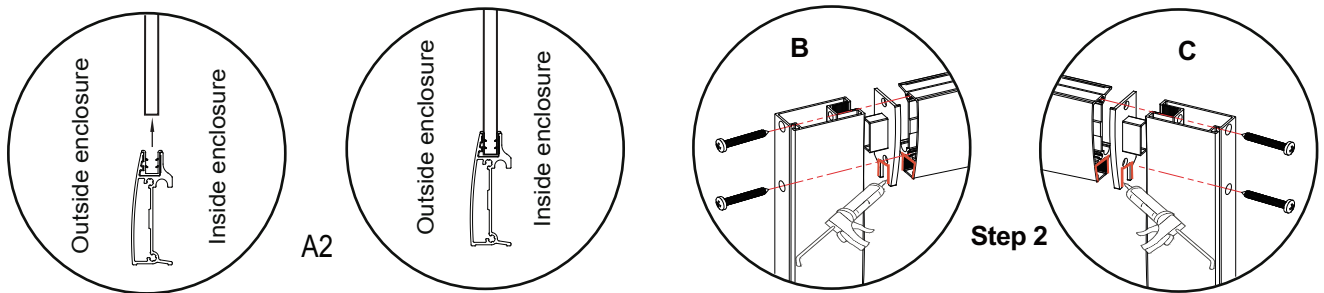
**TRAY MUST BE SEALED FULLY AROUND WHERE THE TRAY MEETS THE WALL.**



## Step 1.

Drop the silicone into the groove of the rail profiles along with the pre-fitted seal, then push the top and bottom profiles (No.4,5) into the fixed glass panels (No.6, No.7), make sure the fixed glass panels (No.6, No.7) are pushed into the gaskets (No.22,23) fully as shown(A).

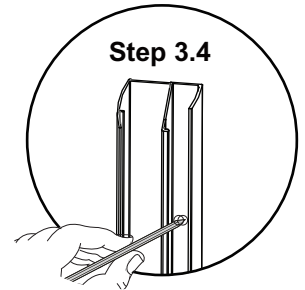
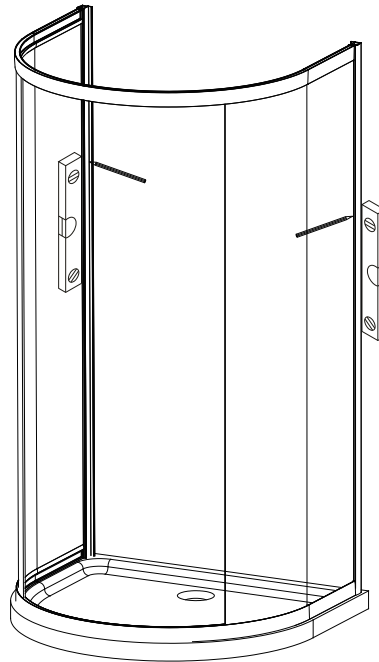
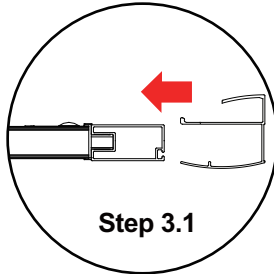
Note: You may find it will be more easy to assemble if the curved edge of the fixed glass panel has been pushed into the gasket first.



## Step 2.

Attach the horizontal profile caps (No.12,13) then fix the pieces together using 2×ST3.5×45 fixing screws through the metal profile of the fixed panels and into the end of the horizontal rail, then attach the other fixed panel to the horizontal profile in the same way. Once both fixed panels are attached to the bottom horizontal rail repeat for the top horizontal.

**Note:** Put a little bit of silicone in the corner of the profile cap and the horizontal profile as shown in diagram (B), the other side needs sealing in the same way (C).



### Step 3.

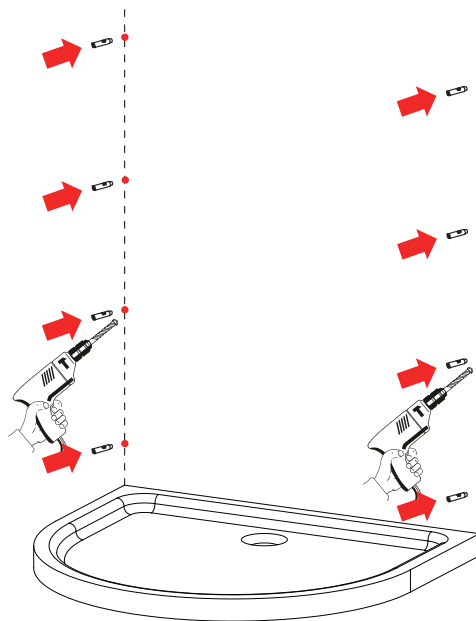
**3.1** Push the wall profiles (**No.1**) onto the frame.

**3.2** Place the assembled frame onto the tray.

**3.3** Level the frame using a spirit level.

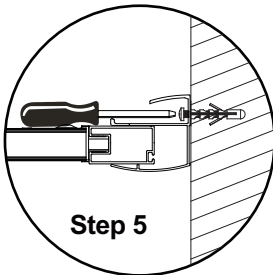
**3.4** Once you are happy that the frame sits on the tray correctly mark the wall through the 4 pre-drilled screw holes in the wall profiles.

**NOTE:** You may find it easier to mark and drill the wall if you apply masking tape to it first.



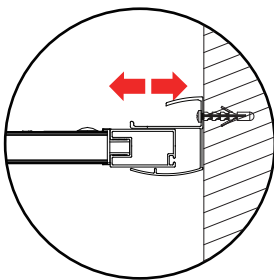
### Step 4.

Remove the wall profiles and drill the marked points using an 8mm masonry drill bit, once this is done insert 8 × wall plugs (**No.27**).

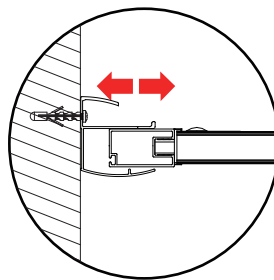


### Step 5.

Re-position the frame and fix both of the wall profiles to the wall using  $8 \times \text{ST4.0} \times 30$  screws (**No.29**).

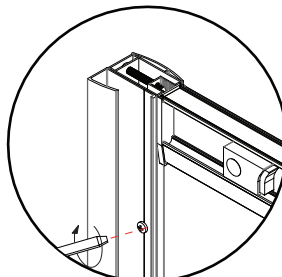
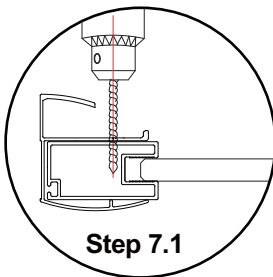


### Step 6



### Step 6.

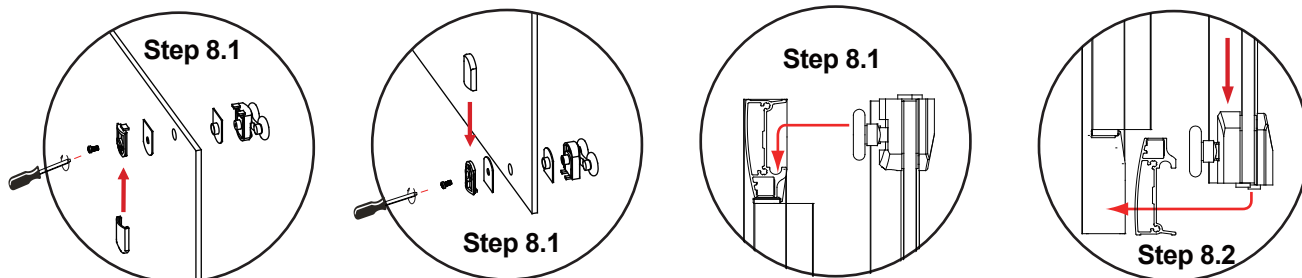
Adjust the frame to ensure that it is central between the wall profiles and level against the shower tray at the base.



### Step 7.

7.1 Drill 4 equally spaced holes with a 3mm drill bit through the wall profiles into the frame.

7.2 Fix the frame to the wall profiles using the screws  $\text{ST3.5} \times 10$  (**No.28** - 4 per wall profile).

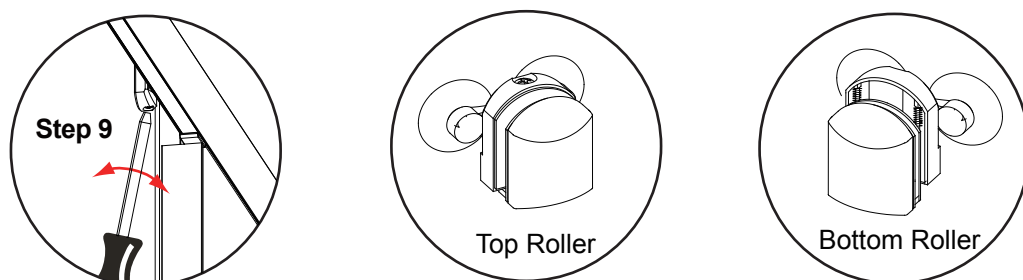


### Step 8.

**8.1** Fix the top and bottom rollers onto the door panel then hang the door onto the frame, start by lifting the door up and guiding the top rollers (**No.19**) into the top horizontal profile (**No.4**).

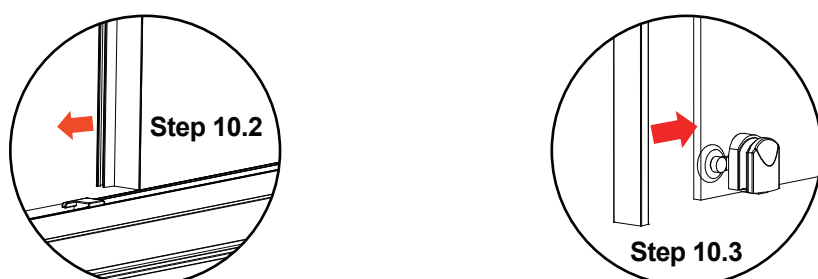
**8.2** Then using the quick release mechanism on the bottom rollers (**No.20**) guide them into the bottom horizontal profile (**No.5**) as shown.

0



### Step 9.

If the wheels do not fit into the profile, or the door can not be closed satisfactorily, the top roller can be adjusted using the adjustment screw in the top rollers (**No.19**) as shown.

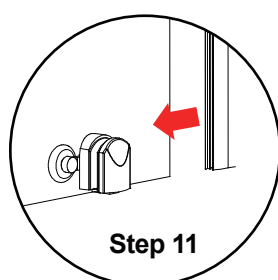


### Step 10.

**10.1** Remove any excess silicone from Step 1

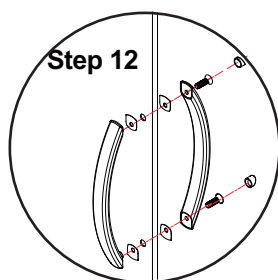
**10.2** Push the shorter vertical seal (**NO.24**) onto the fixed glass panels (**No.6,7**).

**10.3** Push the longer vertical seal (**NO.25**) onto the back edge of the moving glass panels (**No.8**) as shown.



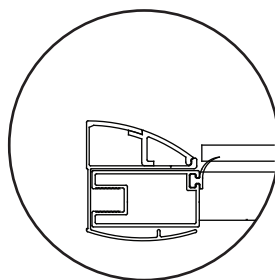
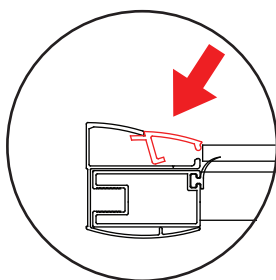
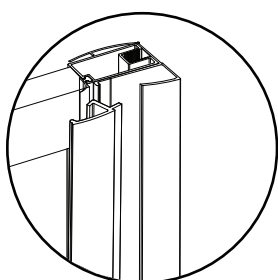
### Step 11.

Push the magnetic strip (**NO.26**) onto the front edge of the moving glass panels (**No.8**) as shown.



### Step 12.

Fix the handle (No.21) to door panels (No.8).



### Step 13

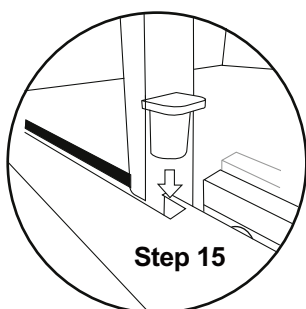
### Step 13.

Once you are happy that the installation is correct, Push the cover strip onto the wall profile as shown above.



### Step 14.

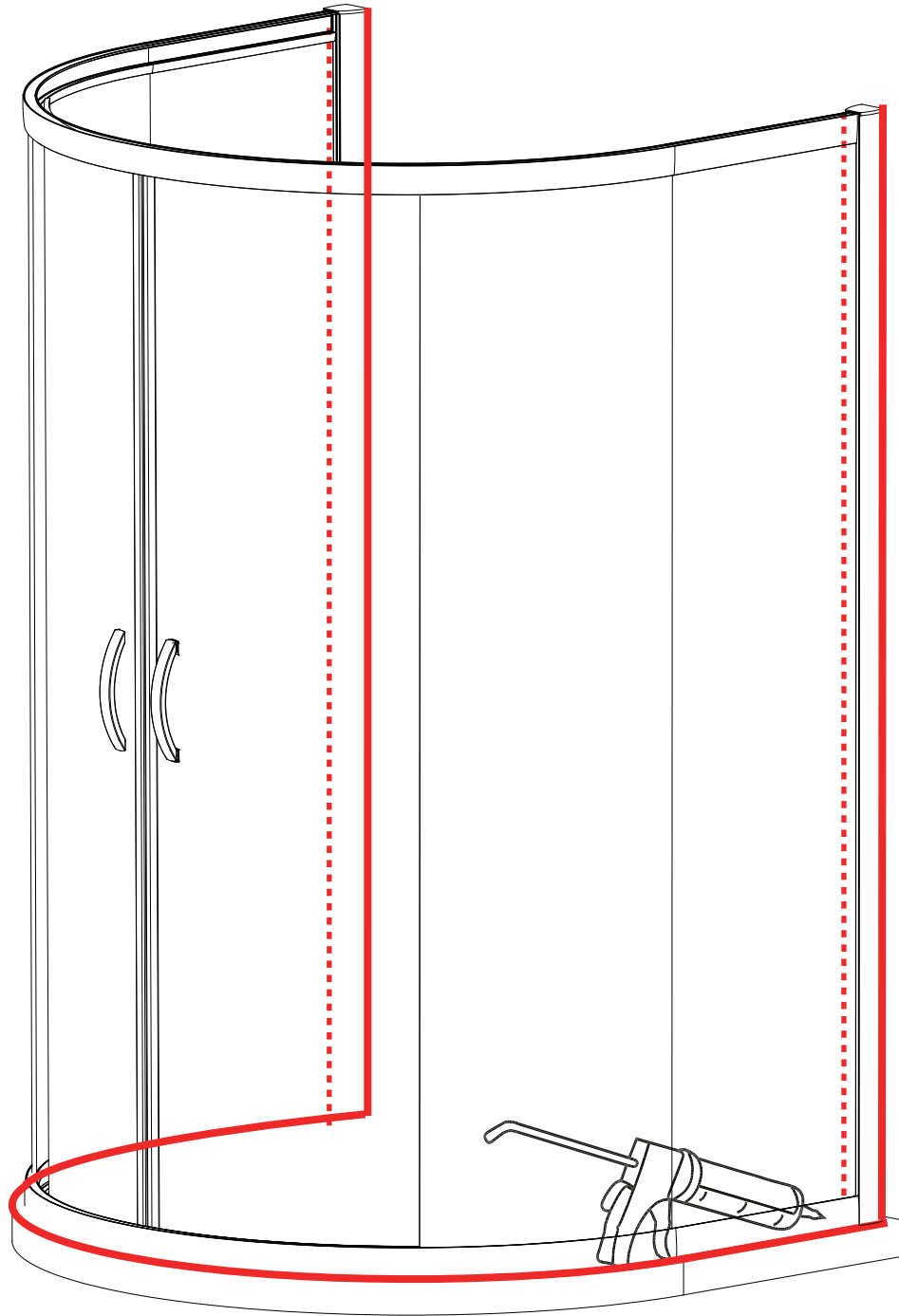
Fit the top caps as shown.



### Step 15.

To finally seal the installation, plug the small holes at the end of the fixed glass panel with a little bit of silicone and insert the glass clips as illustrated.





**24 HRS**



**DO NOT USE THE  
ENCLOSURE FOR  
24 HOURS AFTER  
SEALING**

### Applying Silicone Sealant

#### Sealing Inside

Seal from the top of the wall profile to the bottom on the **INSIDE** between the wall profile and the wall.

**IMPORTANT:** Do not apply sealant on inside of the tray.

#### Sealing Outside

Seal from the top of the wall profile to the bottom between the wall profile and tiles on both sides. Also seal along the bottom where the frame meets the tray. Seal the joints between the bottom profile and any upright profiles.

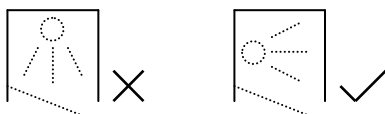
## AFTER CARE

### Cleaning Instructions

It is important to clean your April shower enclosure after every use. Please wipe down all glass and metal parts with a clean soft cloth. Ensure that all residual water on the glass is removed after every use.

### Usage

For reliable, watertight performance from your April enclosure your shower head should not be positioned so that the shower sprays directly onto the enclosure door. Failure to comply with this may cause the shower to leak. Outward opening doors may cause water to drip onto the floor, please ensure that the floor covering immediately outside the enclosure will not be affected by water.



---

**clean&clear™**  
Easy Clean Glass Treatment

This product has been treated with Clean & Clear™ easy clean glass treatment, a protective barrier which creates a 'non-stick' surface on your glass, helping to resist lime scale build up and water spots. For further information on Clean & Clear™ please visit [www.aprilproducts.co.uk](http://www.aprilproducts.co.uk)

### Aftercare

Clean & Clear™ glass can be cleaned with any suitable nonabrasive glass cleaner - with PH value of between 3-11; the coating will not be damaged. Avoid surfactants and heavily perfumed products. Vinegar and water based products are very effective. Do not use abrasive scrubbing cleaners or equipment for cleaning.

### Warranty

Limited 5 year Warranty for Clean & Clear™ treatment: To guarantee treated surfaces will remain more repellent than untreated glass for 5 years from start of use, as long as basic manufacturer maintenance recommendations are followed and no harsh or abrasive cleaners are used.