

identi

Sliding Door / Bow Fronted Slider / Bow Fronted Quadrant

april
PRODUCTS

INSTALLATION INSTRUCTIONS

www.aprilproducts.co.uk

Lifetime Product Guarantee

ATTENTION!

Are you fitting this April enclosure to an April shower tray?

The Lifetime Product Guarantee is only valid when an April enclosure is fitted with an April shower tray and are used and maintained in accordance with the manufacturer's instructions (guarantee excludes seals and magnets). When April enclosures are used with any other shower tray the guarantee period is limited to 10 years.

Please see our website for full Terms & Conditions.

To activate your Product Guarantee please visit www.aprilproducts.co.uk and complete the online form.

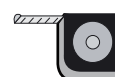
Tools Required



Drill



7 mm Masonry Drill
3.2 mm HSS Drill



Tape Measure



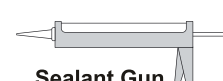
Spirit level



PH2 TYPE
Screwdriver



Pencil



Sealant Gun

Please note hand tools **NOT** supplied.

IMPORTANT

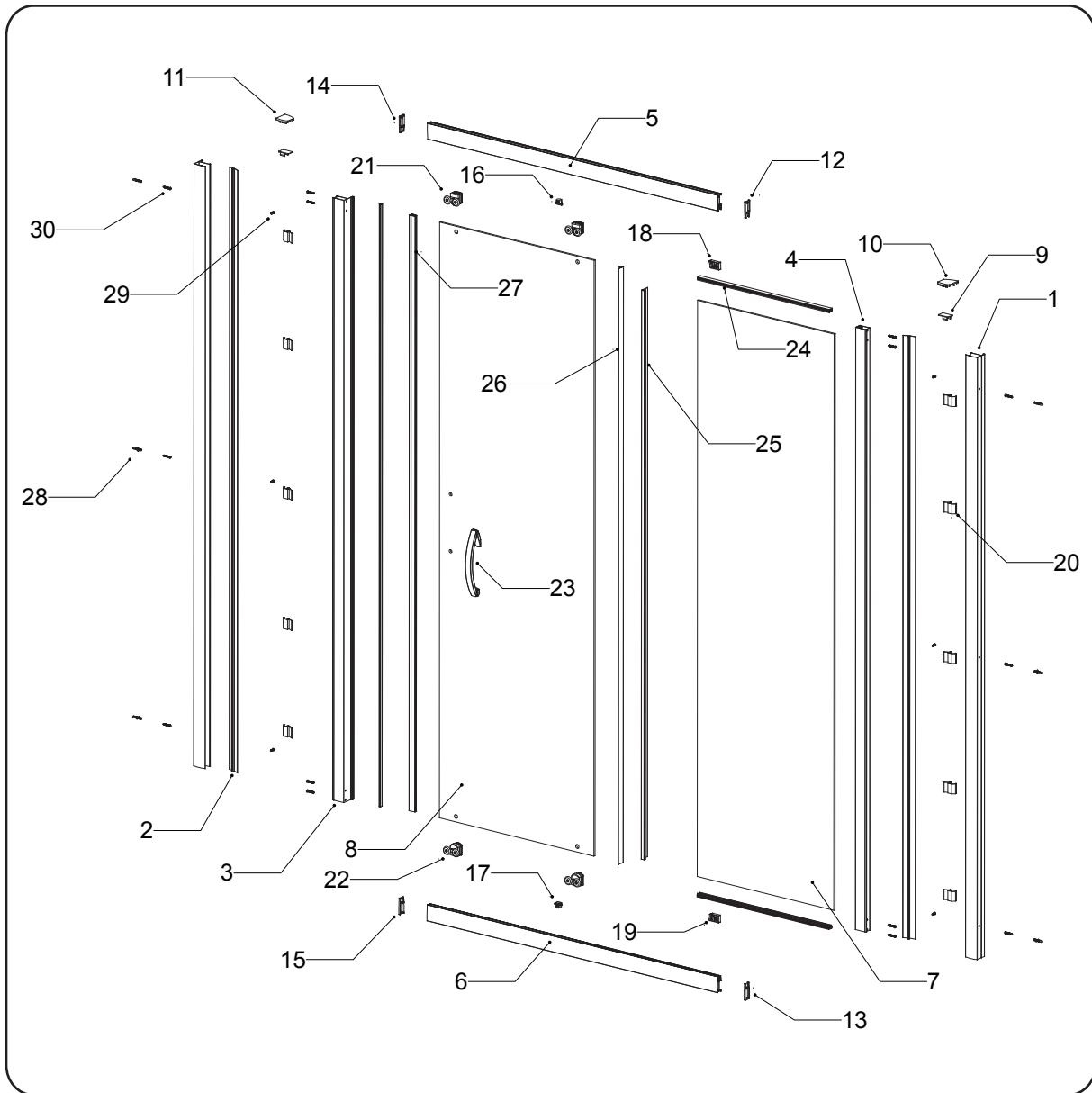
These instructions assume that installation is done against solid/tiled wall.

The wall plugs supplied with the installation kit are for use on solid walls. Hollow or stud-partition walls will require alternative fixings. Please consult with a reputable trades person or hardware supplier for the correct type of fixing.

It may also be necessary to consult your tiling supplier about the correct method for drilling your tiles.

Please check this product for damage prior to starting the installation. No claims can be made after the product has been fitted. This is a 2 person installation. Please note the minimum and maximum adjustment for this product are based on perfectly plum walls.

USE SAFETY EYE-WEAR WHEN DRILLING

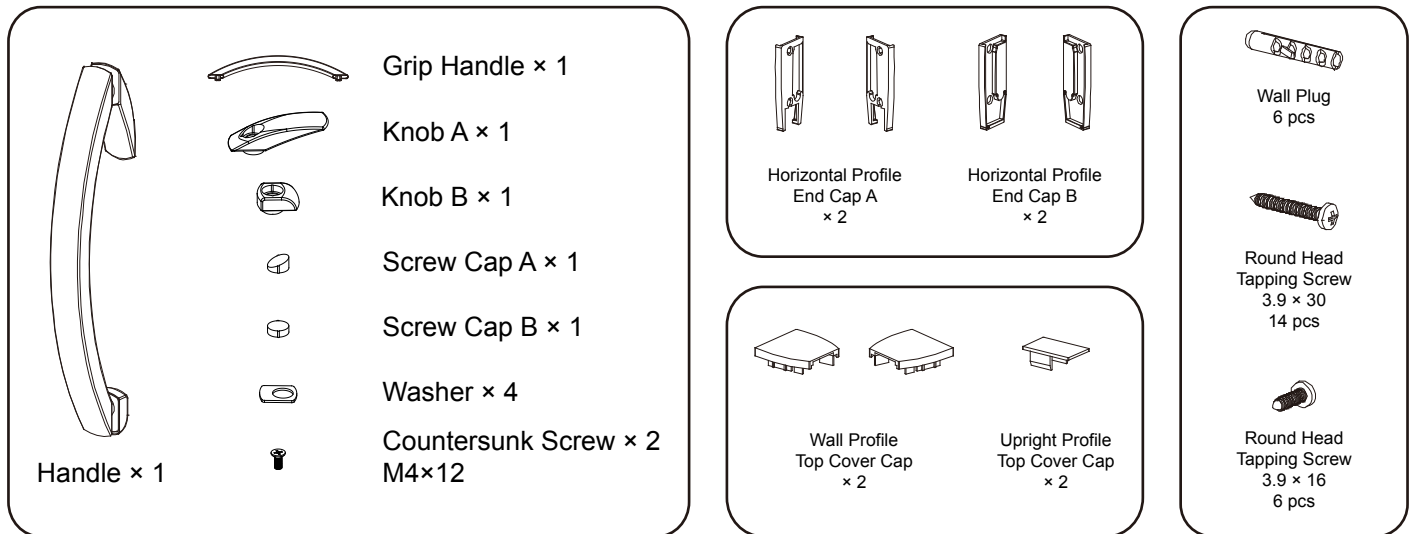


Box Contents

No.	Code	Description	Qty	No.	Code	Description	Qty
1	ID2PF001	Wall Profile	2	16	ID2FT028	Glass Edge Cover - L	1
2	ID2PF002	Cover Strip	2	17	ID2FT029	Glass Edge Cover - R	1
3	ID2PF016	Magnetic Profile	1	18	ID2FT032	Roller Buffer - L	1
4	ID2PF017	Upright Profile	1	19	ID2FT033	Roller Buffer - R	1
5	ID2PF018	Top Profile	1	20	ID2FT034	Cover Strip Fixing Clip	10
6	ID2PF019	Bottom Profile	1	21	ID2FT001	Top roller	2
7	ID2GS001	Fixed Glass Panel	1	22	ID2FT002	Bottom roller	2
8	ID2GS008	Door Glass Panel	1	23	ID2FT040	Handle	1
9	ID2FT003	Upright Profile Top Cover Cap	2	24	ID2SL001	Gasket	2
10	ID2FT008	Wall Profile Top Cover Cap - LH	1	25	ID2SL021	Vertical Seal For Fixed Glass Panel	1
11	ID2FT009	Wall Profile Top Cover Cap - RH	1	26	ID2SL022	Vertical Seal For Moving Glass Panel	1
12	ID2FT024	Horizontal profile End Cap A - L	1	27	ID2SL024	Magnetic Strip For Moving Glass Panel	1
13	ID2FT025	Horizontal profile End Cap A - R	1	28	APTL001	Wall Plug	6
14	ID2FT026	Horizontal profile End Cap B - L	1	29	APTL008	Round Head Tapping Screw ST3.9x16	6
15	ID2FT027	Horizontal profile End Cap B - R	1	30	APTL009	Round Head Tapping Screw ST3.9x30	14

Note: Further part details for fixing kit available on page 2

FIXING KIT



IMPORTANT - Missing Components

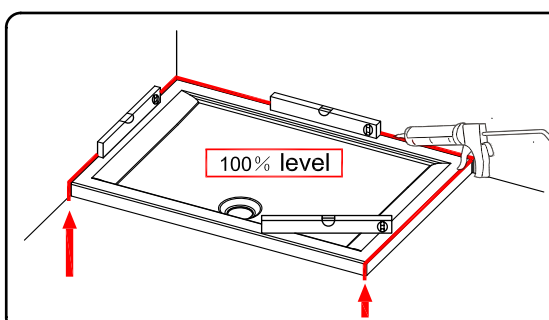
Please check this product for missing components prior to installation.

For spare parts visit www.aprilproducts.co.uk

IMPORTANT - Installation site

1. Ensure the top surface of the shower tray on which the enclosure will be installed is level in every direction.
2. The tiles or other wall finishing should be effectively sealed at tray edges.
3. Tiles should extend at least to the corner of the tray and a minimum of 1.9 metres from the top of the tray.

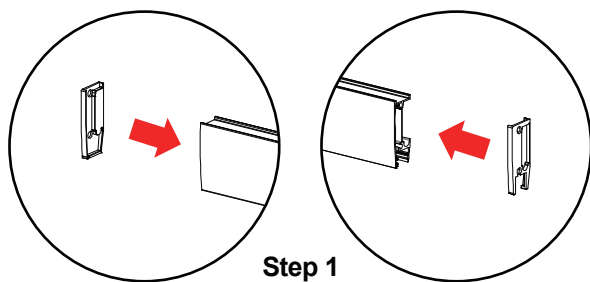
PROCEDURE



TRAY MUST BE 100% LEVEL IN ALL DIRECTIONS

Ensure the shower tray is level in all directions and is properly sealed to the wall. The wall must be tiled down to the top edge of the tray. **Do not angle out bottom tile.**

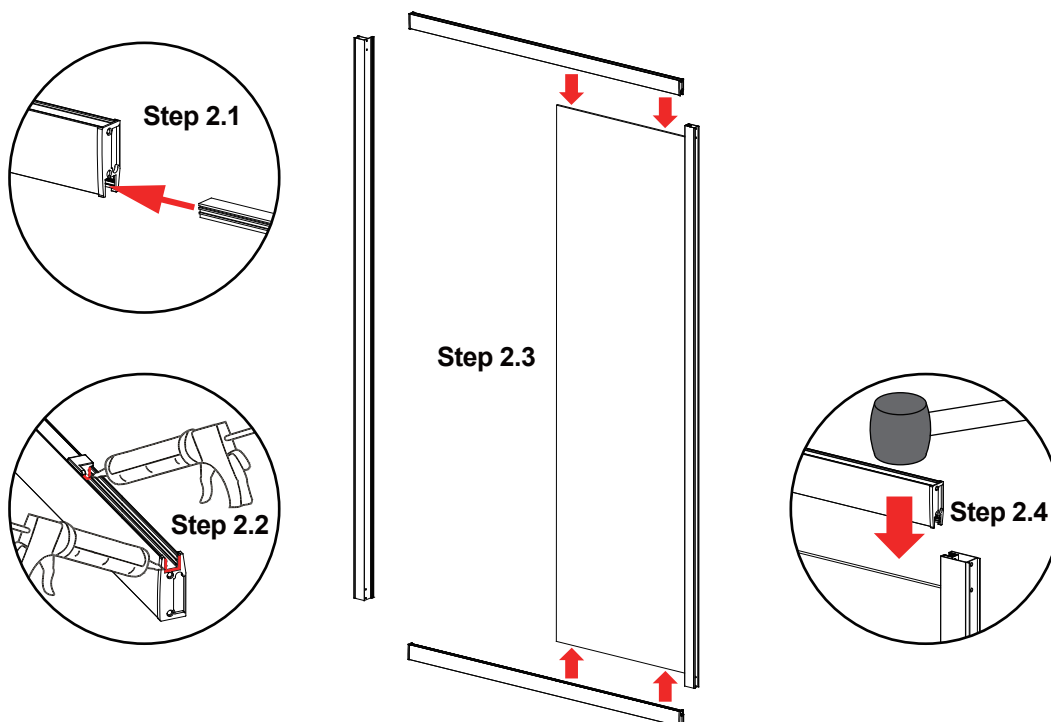
TRAY MUST BE SEALED FULLY AROUND WHERE THE TRAY MEETS THE WALL.



Step 1

Step 1.

Put the horizontal profile end caps (**No.12,13,14,15**) into the top and bottom profiles (**No.5,6**).



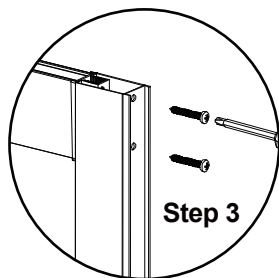
Step 2.

2.1 Insert the gasket (**No.24**) into the top and bottom profiles (The gasket might be pre-inserted into the profiles).

2.2 Put a little bit of silicone in the corner between the glass and the profile where the glass edge cover (**No.16,17**) is fixed to the top and bottom profiles (**No.5,6**), and the end of the top and bottom profiles as shown.

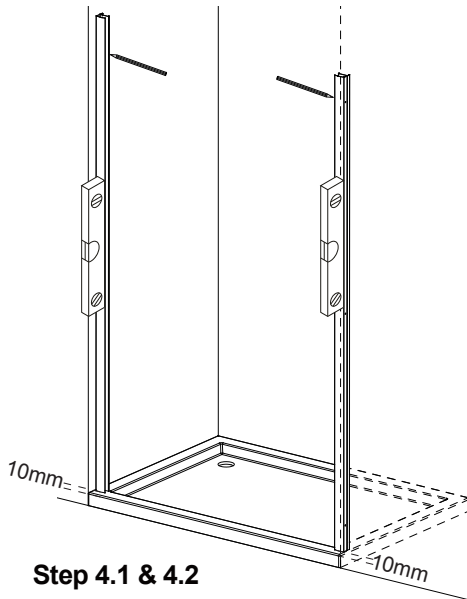
2.3 Push the top and bottom profiles (**No.5,6**) into the fixed glass panel (**No.7**), make sure the fixed glass panel (**No.7**) is pushed into the gasket (**No.24**) fully.

2.4 You may find it easier to use a rubber hammer as shown.



Step 3.

Fix the frame to the fixed glass panel using the screws ST3.9×30 (**No.30**).



Step 4.1 & 4.2



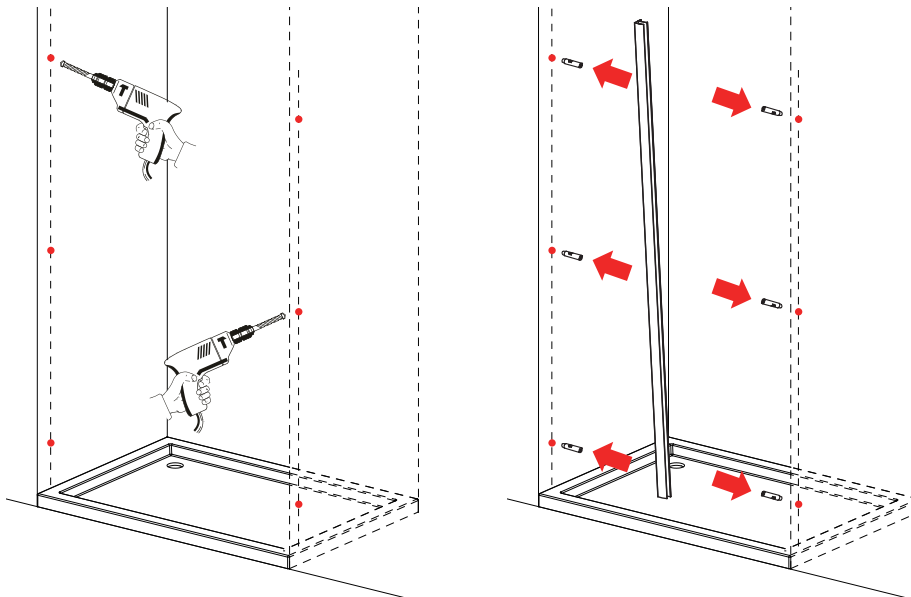
Step 4.

4.1 Position the wall profiles (**No.1**) to wall as shown (roughly 10mm from the front of the tray).

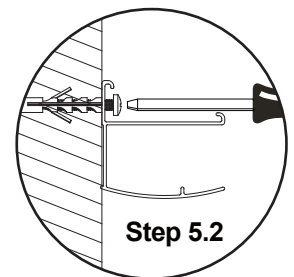
4.2 Level the frame using a spirit level.

4.3 Once you are happy that the frame sits on the tray correctly mark the wall through the 3 pre-drilled screw holes in the wall profiles.

NOTE: You may find it easier to mark and drill the wall if you apply masking tape to it first.



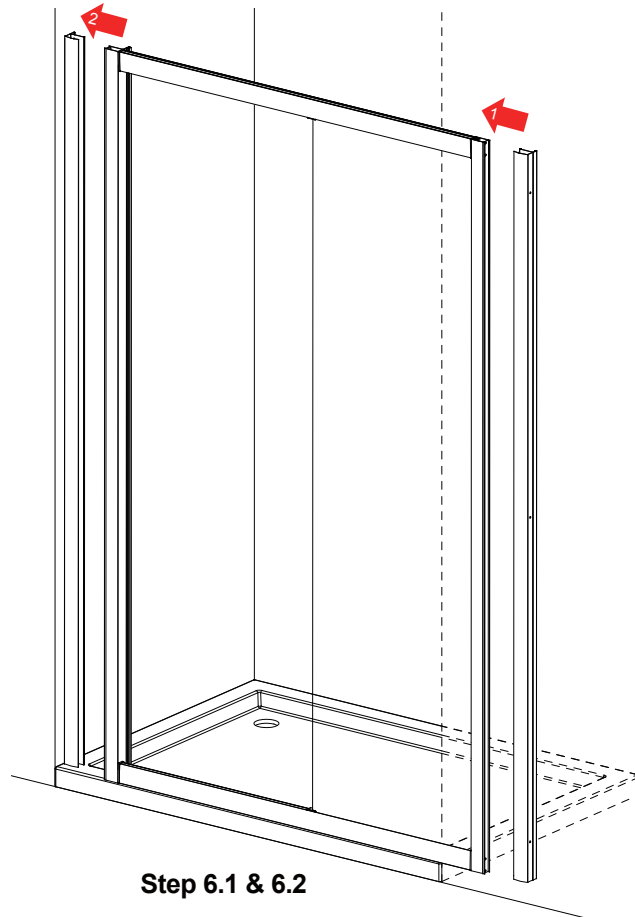
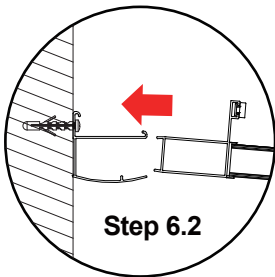
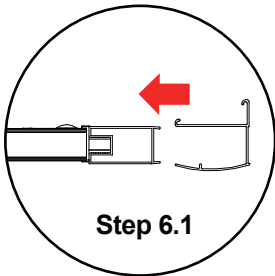
Step 5.1



Step 5.

5.1 Remove the wall profiles and drill the marked points using a 8mm masonry drill bit, once this is done insert 6 x wall plugs (**No.28**).

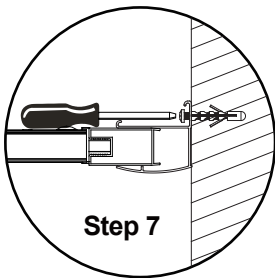
5.2 Fix the wall profile (Magnetic profile side) to wall using the screws ST3.9 x 30 (**No.30**).



Step 6.

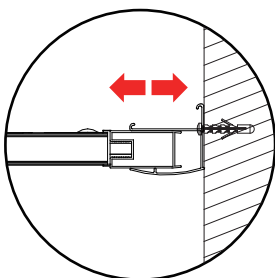
6.1 Push the other wall profile to the fixed panel side.

6.2 Then insert the frame into the fixed wall profile as shown.

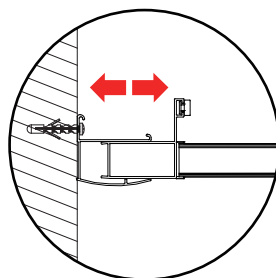


Step 7.

Fix the other wall profile using screws ST3.9 × 30 (**No.30**).

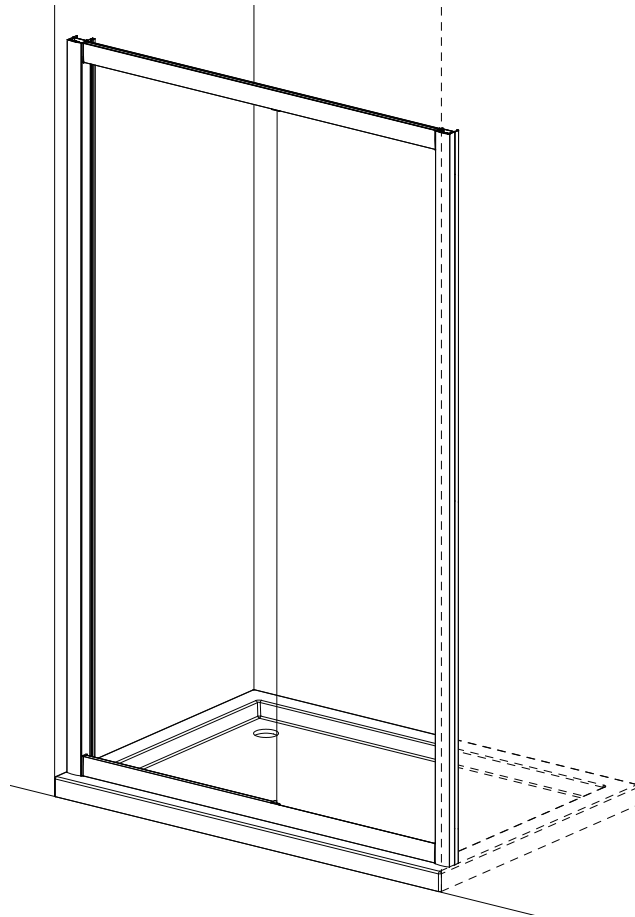
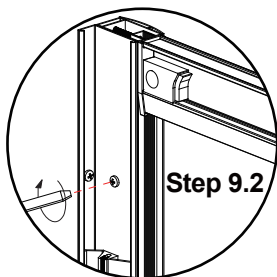
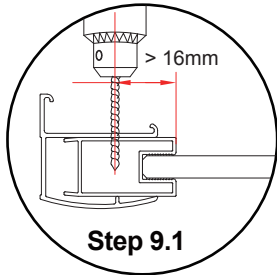


Step 8



Step 8.

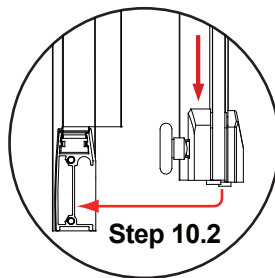
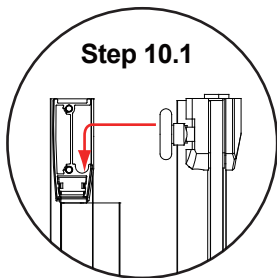
Adjust the frame to ensure that it is central between the wall profiles and level against the shower tray at the base.



Step 9.

9.1 Drill 3 equally spaced holes with a 3mm drill bit through the wall profiles and frame.

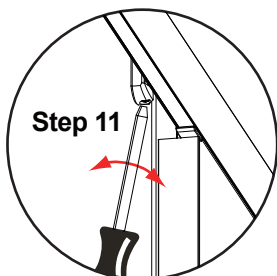
9.2 Fix the frame to the wall profiles using the screws ST3.9 × 16 (**No.29** - 3 per wall profile).



Step 10.

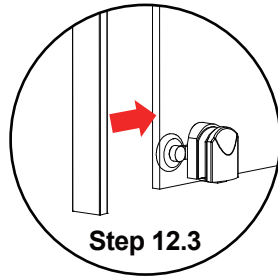
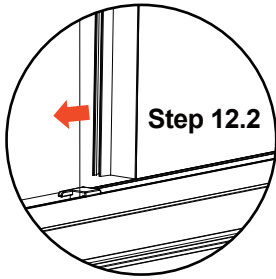
10.1 Hang the door on the frame, start by lifting the door up and guiding the top rollers (**No.21**) into the top horizontal profile (**No.5**).

10.2 Then using the quick release mechanism on the bottom rollers (**No.22**) guide them into the bottom horizontal profile (**No.6**) as shown.



Step 11.

If the wheels do not fit into the profile, or the door can not be closed satisfactorily, the top roller can be adjusted using the adjustment screw in the top rollers (**No.21**) as shown.

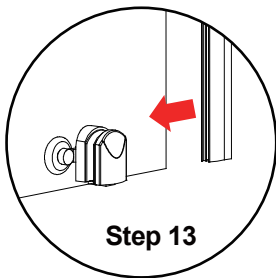


Step 12.

12.1 Remove any excess silicone from Step 2.1.

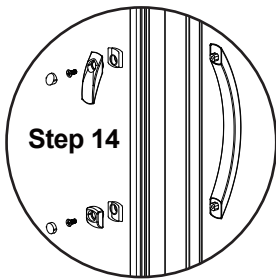
12.2 Push the shorter vertical seal (**NO.25**) onto the fixed glass panel (**No.7**),

12.3 Push the longer vertical seal (**NO.26**) onto the back edge of the moving glass panel (door) (**No.8**) as shown.



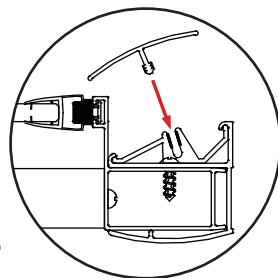
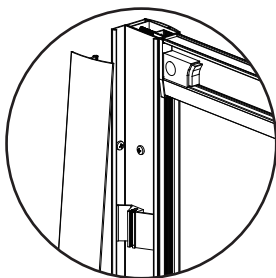
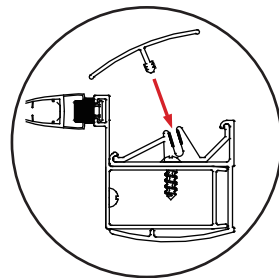
Step 13.

Push the magnetic strip (**NO.27**) onto the front edge of the moving glass panel (**No.8**) as shown.



Step 14.

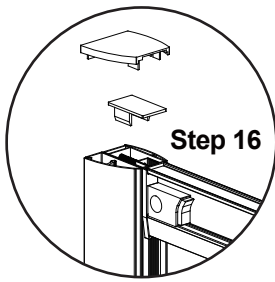
Fix the handle (**No.23**) to door panel.



Step 15

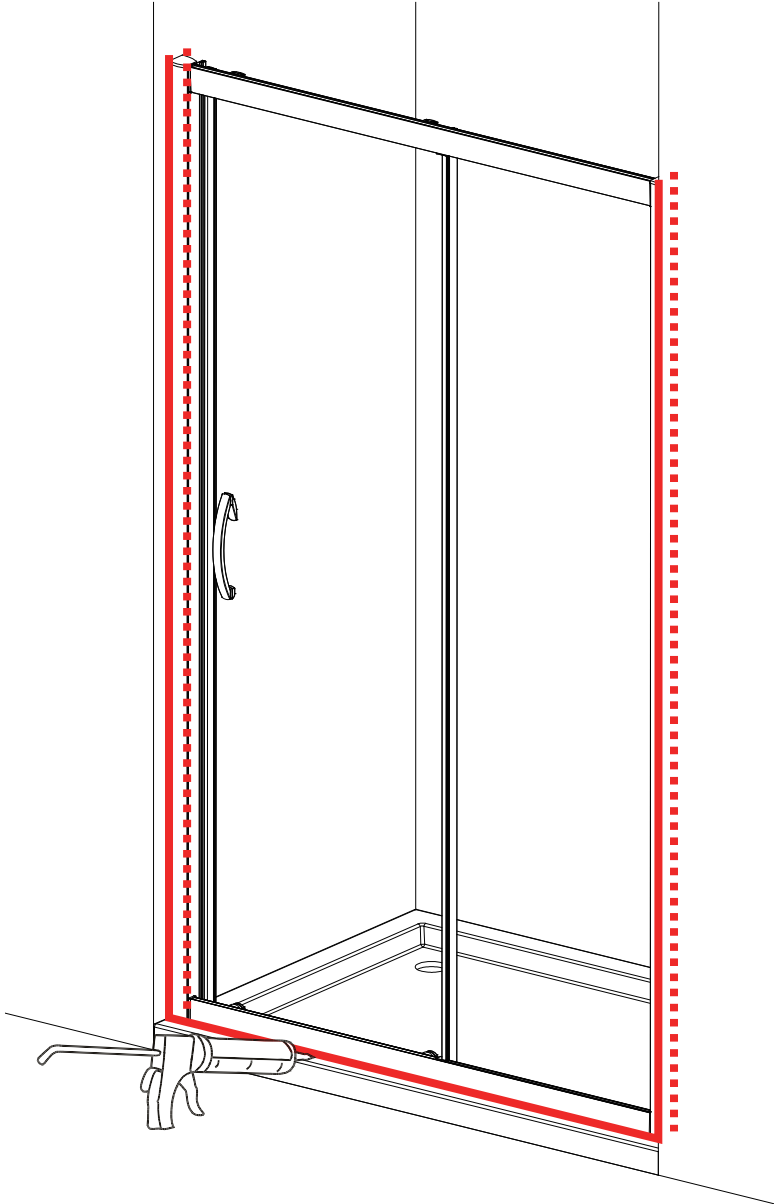
Step 15.

Once you are happy that the installation is correct and that the door is running smoothly, Push 5 x Profile Clips (**No.20**) in to the wall profile and evenly space then push the cover strip profile (**No.2**) into the nylon clips (**No.20**) as shown.



Step 16.

Fit the upright profile top caps (**No.9**) and wall profiles top caps (**No.10,11**) as shown.



24 HRS



**DO NOT USE THE
ENCLOSURE FOR
24 HOURS AFTER
SEALING**

Applying Silicone Sealant

Sealing Inside

Seal from the top of the wall profile to the bottom on the **INSIDE** between the wall profile and the wall.

IMPORTANT: Do not apply sealant on inside of the tray.

Sealing Outside

Seal from the top of the wall profile to the bottom between the wall profile and tiles on both sides. Also seal along the bottom where the frame meets the tray. Seal the joints between the bottom profile and any upright profiles.

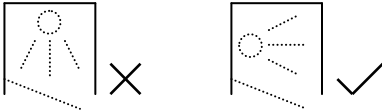
AFTERCARE

Cleaning Instructions

It is important to clean your April shower enclosure after every use. Please wipe down all glass and metal parts with a clean soft cloth. Ensure that all residual water on the glass is removed after every use.

Usage

For reliable, watertight performance from your April enclosure your shower head should not be positioned so that the shower sprays directly onto the enclosure door. Failure to comply with this may cause the shower to leak. Outward opening doors may cause water to drip onto the floor, please ensure that the floor covering immediately outside the enclosure will not be affected by water.



This product has been treated with Clean & Clear™ easy clean glass treatment, a protective barrier which creates a 'non-stick' surface on your glass, helping to resist lime scale build up and water spots. For further information on Clean & Clear™ please visit www.aprilproducts.co.uk

Aftercare

Clean & Clear™ glass can be cleaned with any suitable nonabrasive glass cleaner - with PH value of between 3-11; the coating will not be damaged. Avoid surfactants and heavily perfumed products. Vinegar and water based products are very effective. Do not use abrasive scrubbing cleaners or equipment for cleaning.

Warranty

Limited 5 year Warranty for Clean & Clear™ treatment: To guarantee treated surfaces will remain more repellent than untreated glass for 5 years from start of use, as long as basic manufacturer maintenance recommendations are followed and no harsh or abrasive cleaners are used.

Aftercare & Reapplication Kit

To continue the benefits of the Clean & Clear™ glass treatment an aftercare & reapplication kit is available at www.aprilproducts.co.uk