

identi*i*

One Door Quadrant

april
PRODUCTS

INSTALLATION INSTRUCTIONS

www.aprilproducts.co.uk

Lifetime Product Guarantee

ATTENTION!

Are you fitting this April enclosure to an April shower tray?

The Lifetime Product Guarantee is only valid when an April enclosure is fitted with an April shower tray and are used and maintained in accordance with the manufacturer's instructions (guarantee excludes seals and magnets). When April enclosures are used with any other shower tray the guarantee period is limited to 10 years.

Please see our website for full Terms & Conditions.

To activate your Product Guarantee please visit www.aprilproducts.co.uk and complete the online form.

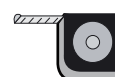
Tools Required



Drill



7 mm Masonry Drill
3.2 mm HSS Drill



Tape Measure



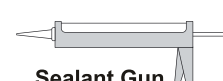
Spirit level



PH2 TYPE
Screwdriver



Pencil



Sealant Gun

Please note hand tools **NOT** supplied.

IMPORTANT

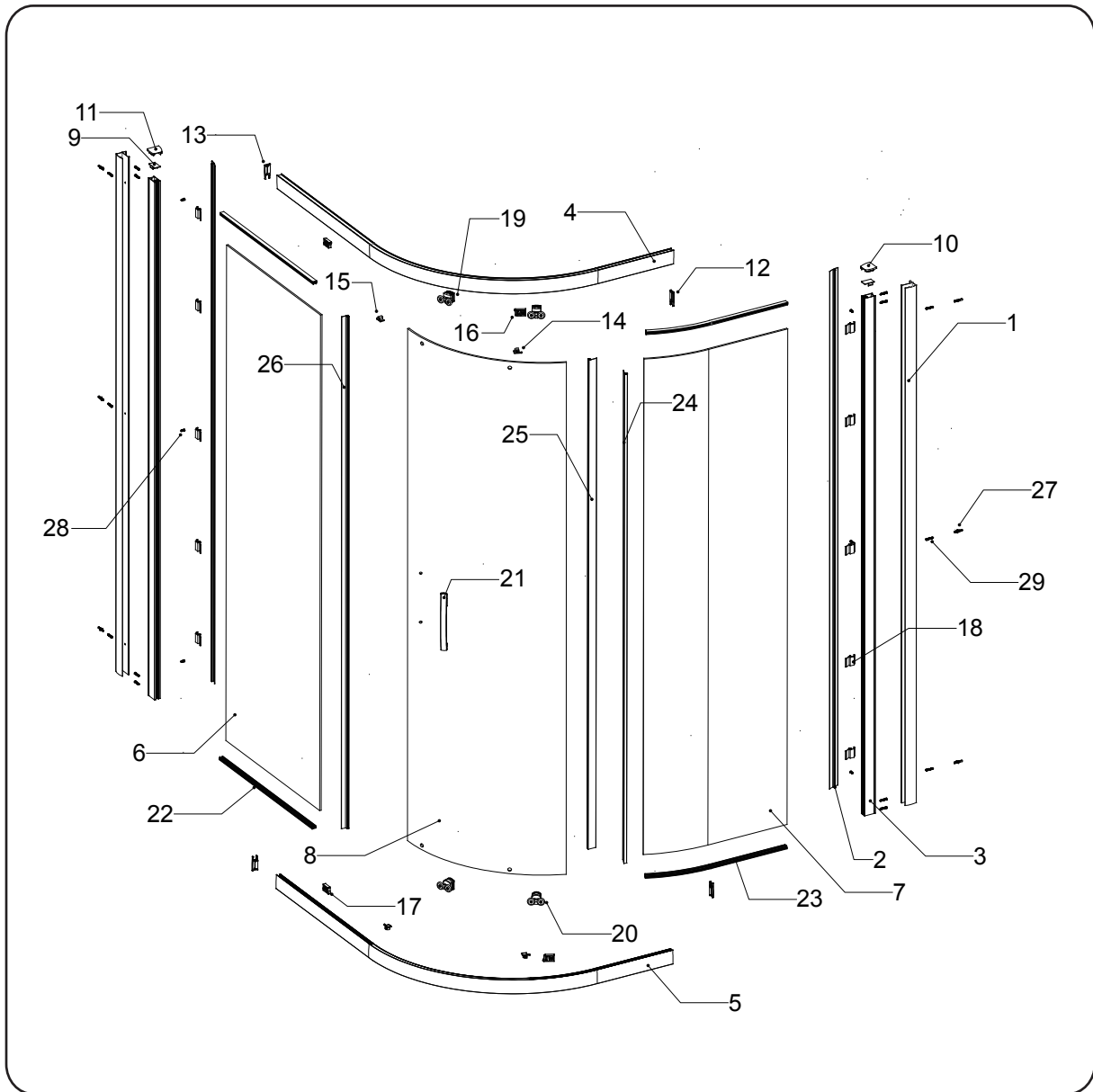
These instructions assume that installation is done against solid/tiled wall.

The wall plugs supplied with the installation kit are for use on solid walls. Hollow or stud-partition walls will require alternative fixings. Please consult with a reputable trades person or hardware supplier for the correct type of fixing.

It may also be necessary to consult your tiling supplier about the correct method for drilling your tiles.

Please check this product for damage prior to starting the installation. No claims can be made after the product has been fitted. This is a 2 person installation. Please note the minimum and maximum adjustment for this product are based on perfectly plum walls.

USE SAFETY EYE-WEAR WHEN DRILLING

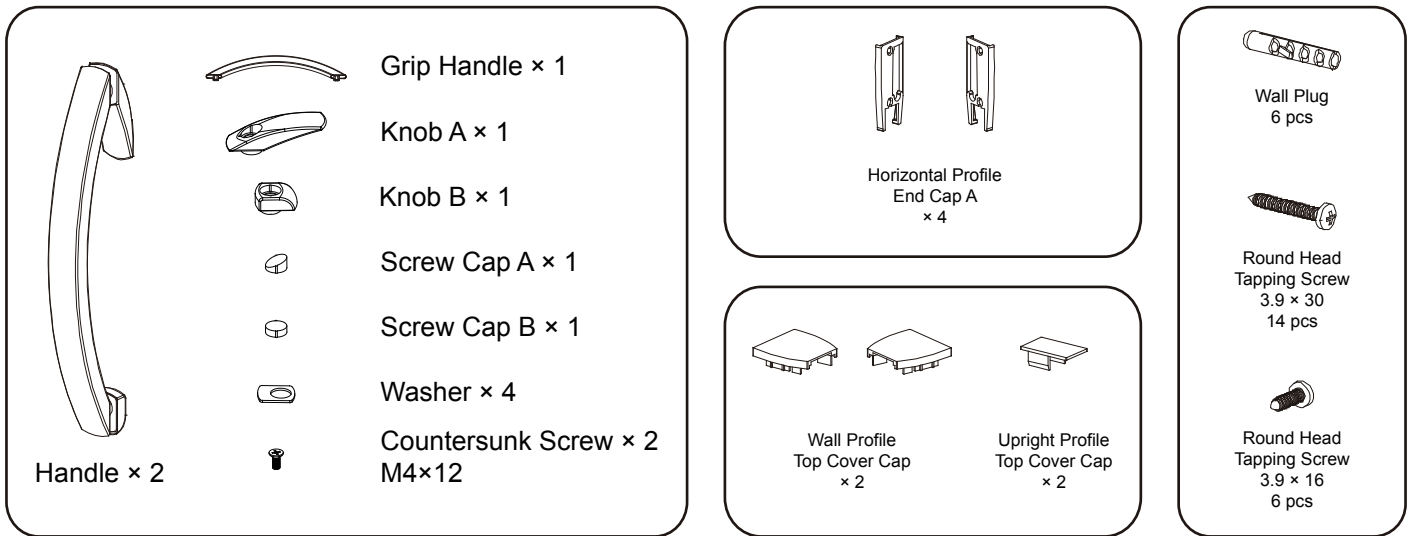


Box Contents

SN	Code	Description	Qty	SN	Code	Description	Qty
1	ID2PF001	Wall Profile	2	16	ID2FT032	Roller Buffer - L	2
2	ID2PF002	Cover Strip	2	17	ID2FT033	Roller Buffer - R	2
3	ID2PF017	Upright Profile	2	18	ID2FT034	Cover Strip Fixing Clip	10
4	ID2PF049	Top Profile	1	19	ID2FT001	Top Roller	2
5	ID2PF050	Bottom Profile	1	20	ID2FT002	Bottom Roller	2
6	ID2GS017	Straight Fixed Glass Panel	1	21	ID2FT040	Handle	1
7	ID2GS024	Curved Then Straight Fixed Glass Panel	1	22	ID2SL011	Straight Gasket	2
8	ID2GS026	Moving Glass Panel	1	23	ID2SL016	Curved Then Straight Gasket	2
9	ID2FT003	Upright Profile Cap	2	24	ID2SL021	Vertical Seal A for Fixed Glass Panel (14mm flipper)	1
10	ID2FT008	Wall Profile Cap - LH	1	25	ID2SL022	Vertical Seal A for Moving Glass Panel (14mm flipper)	1
11	ID2FT009	Wall Profile Cap - RH	1	26	ID2SL023	Vertical Seal B for Fixed Glass Panel (27mm flipper)	1
12	ID2FT024	End Cap A - L	2	27	APTL001	Wall Plug	6
13	ID2FT025	End Cap A - R	2	28	APTL008	Screw ST3.9×16	6
14	ID2FT028	Glass Edge Cover - L	2	29	APTL009	Screw ST3.9×30	14
15	ID2FT029	Glass Edge Cover - R	2				

Note: Further part details for fixing kit available on page 2

FIXING KIT



IMPORTANT - Missing Components

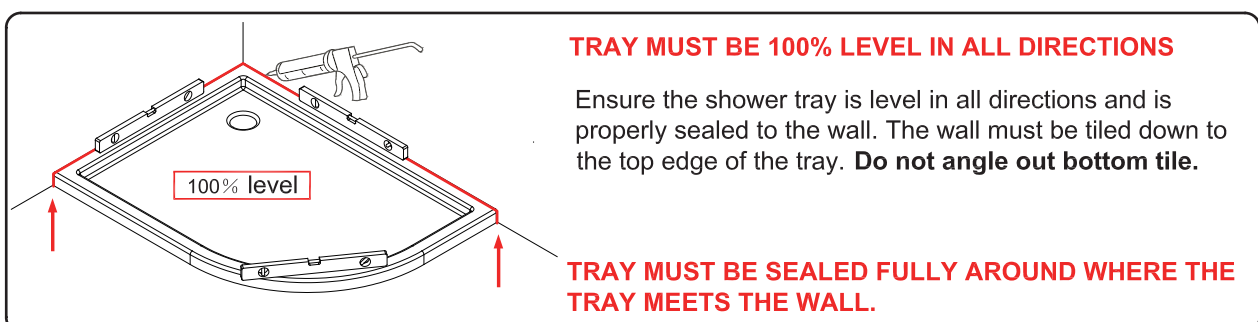
Please check this product for missing components prior to installation.

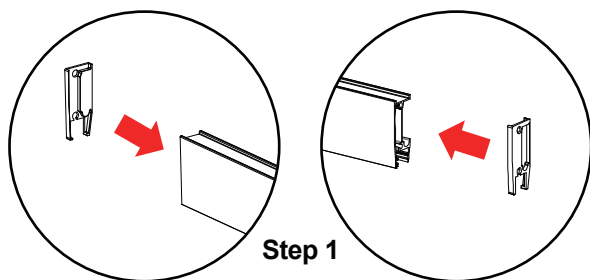
For spare parts visit www.aprilproducts.co.uk

IMPORTANT - Installation site

1. Ensure the top surface of the shower tray on which the enclosure will be installed is level in every direction.
2. The tiles or other wall finishing should be effectively sealed at tray edges.
3. Tiles should extend at least to the corner of the tray and a minimum of 1.9 metres from the top of the tray.

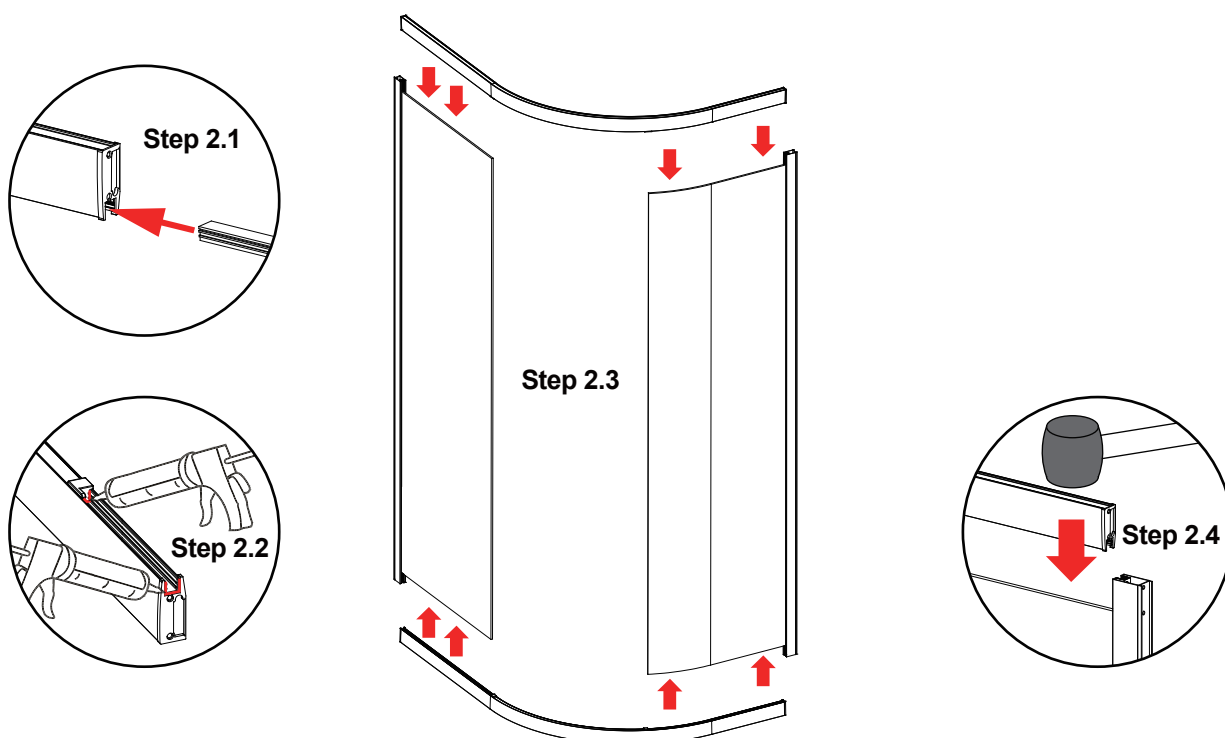
PROCEDURE





Step 1.

Put the horizontal profile end caps (**No.12,13**) into the top and bottom profiles (**No.4,5**).



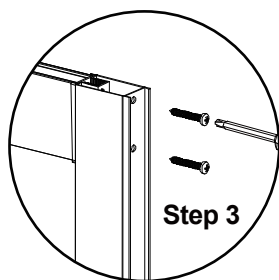
Step 2.

2.1 Insert the gasket (**No.22,23**) into the top and bottom profiles (The gasket might be pre-inserted into the profiles).

2.2 Put a little bit of silicone in the corner between the glass and the profile where the glass edge cover (**No.14,15**) is fixed to the top and bottom profiles (**No.4,5**).

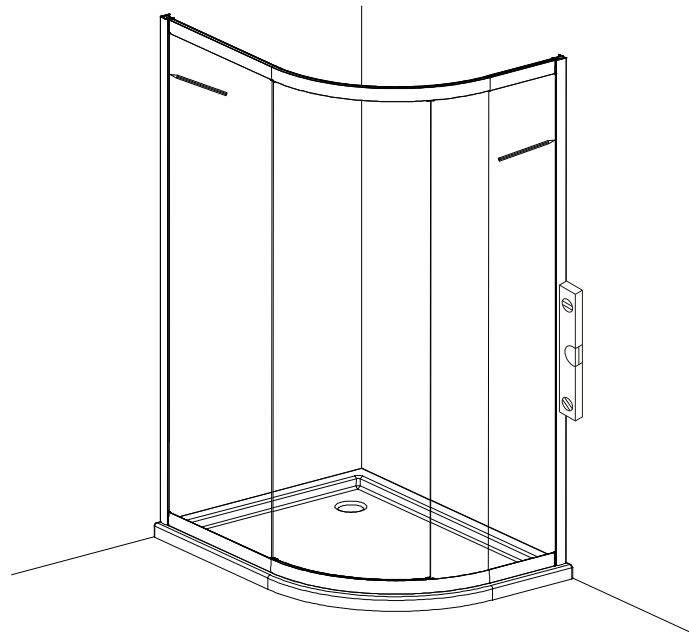
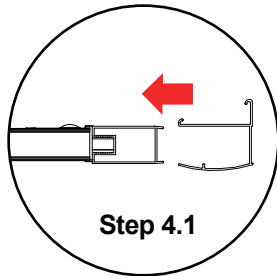
2.3 Push the top and bottom profiles (**No.4,5**) into the fixed glass panels (**No.6,7**), make sure the fixed glass panels (**No.6,7**) are pushed into the gaskets (**No.23,24**) fully.

2.4 You may find it easier to use a rubber hammer as shown.



Step 3.

Fix the frame to the fixed glass panels using the screws ST3.9x30 (**No.29**).



Step 4.

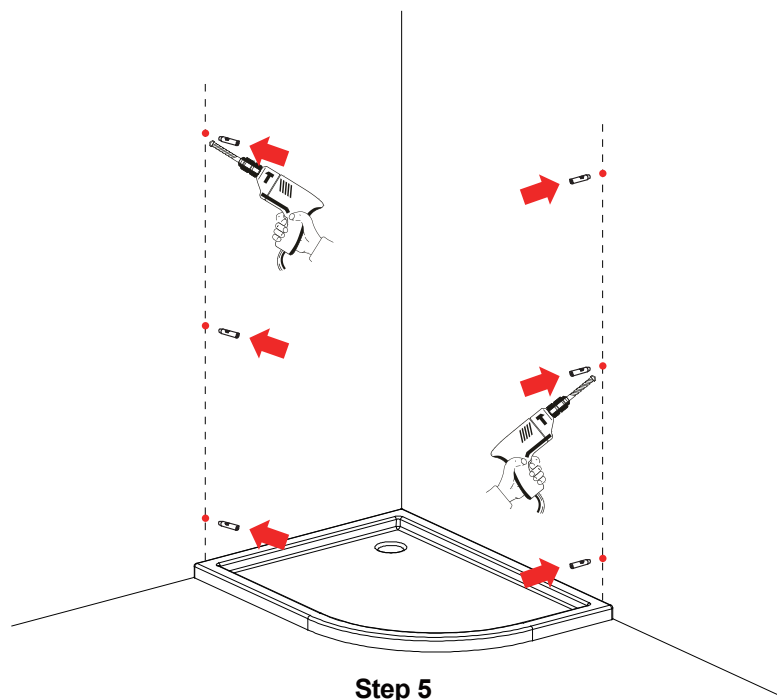
4.1 Push the wall profiles (**No.1**) onto the frame.

4.2 Place the assembled frame onto the tray.

4.3 Level the frame using a spirit level.

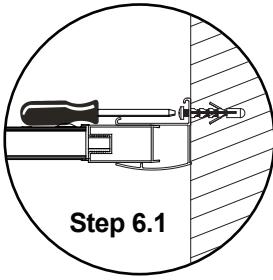
4.4 Once you are happy that the frame sits on the tray correctly mark the wall through the 3 pre-drilled screw holes in the wall profiles.

NOTE: You may find it easier to mark and drill the wall if you apply masking tape to it first.



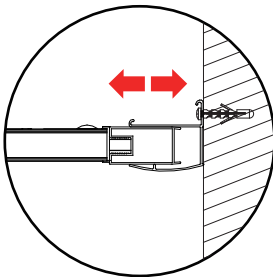
Step 5.

Remove the wall profiles and drill the marked points using an 8mm masonry drill bit, once this is done insert 6 × wall plugs (**No.27**).

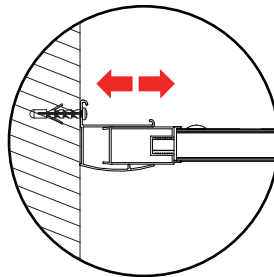


Step 6.

Re-position the frame and fix both of the wall profiles to the wall using 6 × ST3.9 × 30 screws (**No.29**).

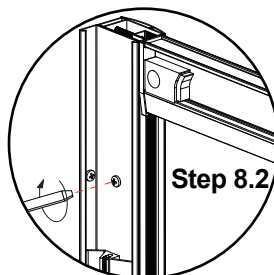
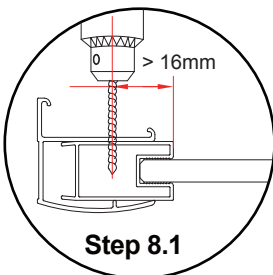


Step 7



Step 7.

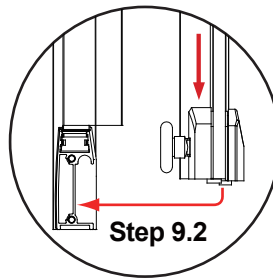
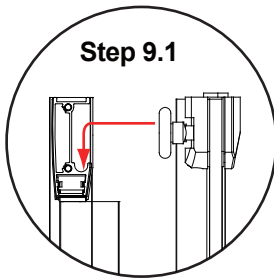
Adjust the frame to ensure that it is central between the wall profiles and level against the shower tray at the base.



Step 8.

8.1 Drill 3 equally spaced holes with a 3mm drill bit through the wall profiles into the frame.

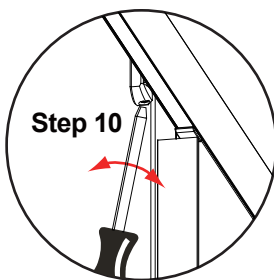
8.2 Fix the frame to the wall profiles using the screws ST3.9 × 16 (**No.28** - 3 per wall profile).



Step 9.

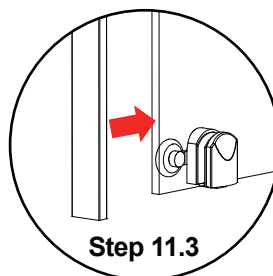
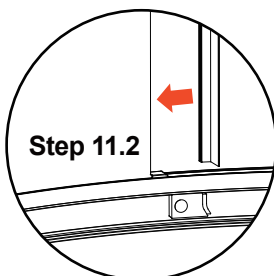
9.1 Hang the door on the frame, start by lifting the door up and guiding the top rollers (**No.19**) into the top horizontal profile (**No.4**).

9.2 Then using the quick release mechanism on the bottom rollers (**No.20**) guide them into the bottom horizontal profile (**No.5**) as shown.



Step 10.

If the wheels do not fit into the profile, or the door can not be closed satisfactorily, the top roller can be adjusted using the adjustment screw in the top rollers (**No.19**) as shown.

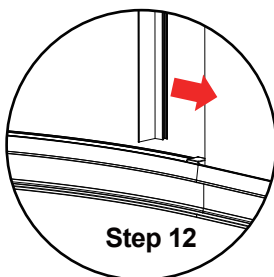


Step 11.

11.1 Remove any excess silicone from Step 2.1.

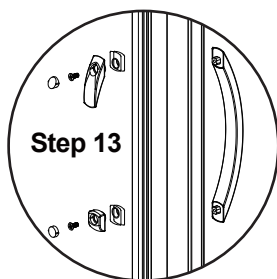
11.2 Push the shorter vertical seal A (**NO.24**) onto the curved then straight fixed glass panels (**No.7**).

11.3 Push the longer vertical seal A (**NO.25**) onto the back edge of the moving glass panels (**No.8**) as shown.



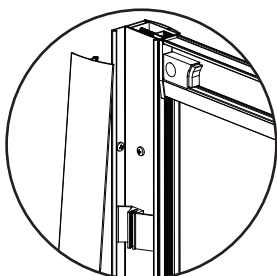
Step 12.

Push the vertical seal B (**NO.26**) onto the straight fixed glass panel (**No.6**) as shown.

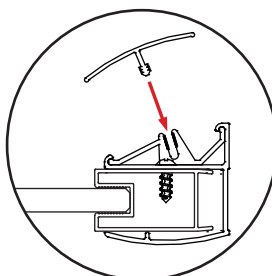


Step 13.

Fix the handle (**No.21**) to door panels (**No.8**).



Step 14



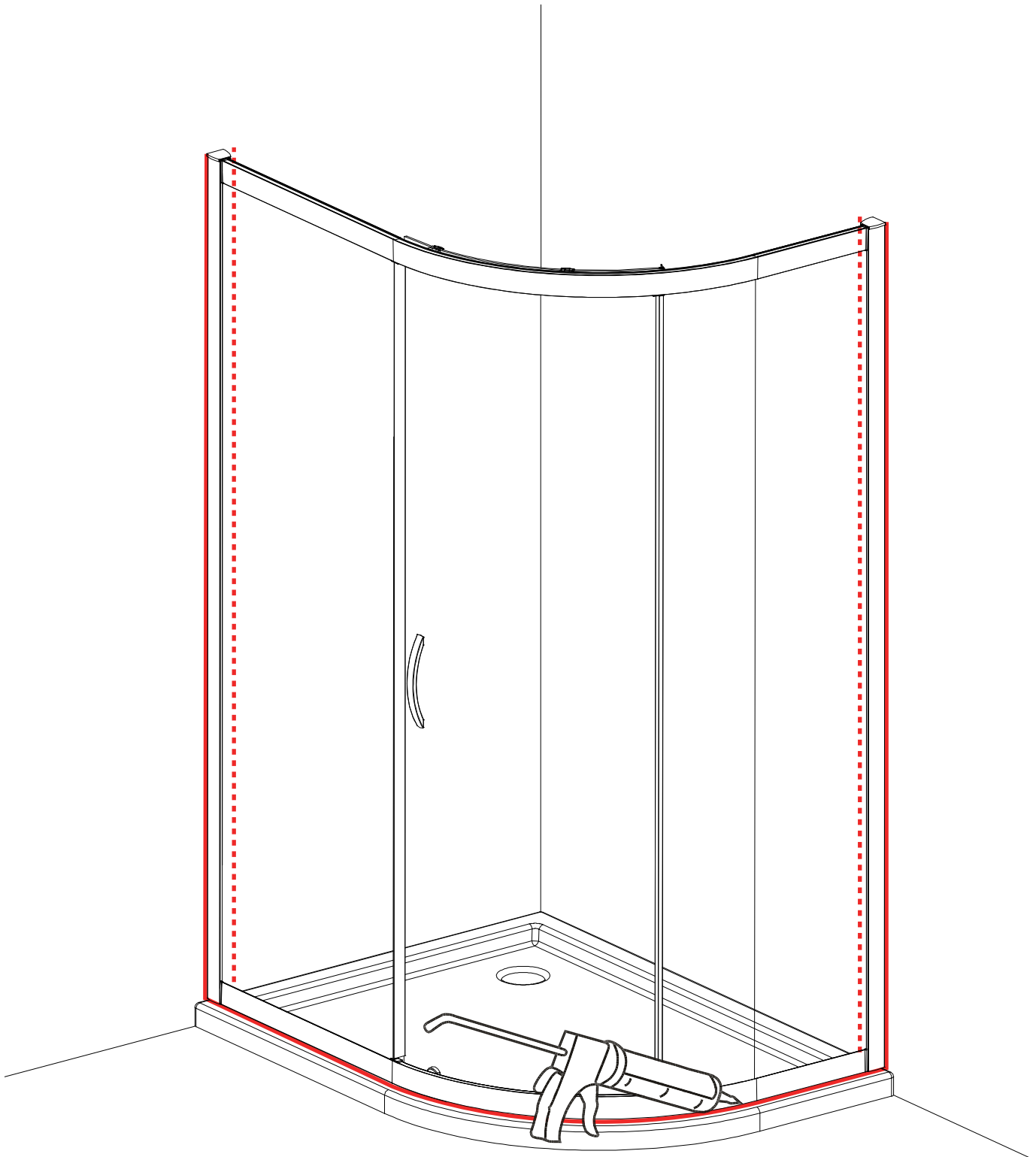
Step 14.

Once you are happy that the installation is correct and that the door is running smoothly, push 5 x Profile Clips (No.18) in to the wall profile and evenly space then push the cover strip profiles (**No.2**) into the nylon clip (**No.18**) as shown.



Step 15.

Fit the top caps as shown, depending on your model.



24 HRS



**DO NOT USE THE
ENCLOSURE FOR
24 HOURS AFTER
SEALING**

Applying Silicone Sealant

Sealing Inside

Seal from the top of the wall profile to the bottom on the **INSIDE** between the wall profile and the wall.

IMPORTANT: Do not apply sealant on inside of the tray.

Sealing Outside

Seal from the top of the wall profile to the bottom between the wall profile and tiles on both sides. Also seal along the bottom where the frame meets the tray. Seal the joints between the bottom profile and any upright profiles.

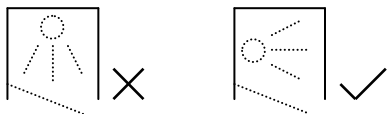
AFTERCARE

Cleaning Instructions

It is important to clean your April shower enclosure after every use. Please wipe down all glass and metal parts with a clean soft cloth. Ensure that all residual water on the glass is removed after every use.

Usage

For reliable, watertight performance from your April enclosure your shower head should not be positioned so that the shower sprays directly onto the enclosure door. Failure to comply with this may cause the shower to leak. Outward opening doors may cause water to drip onto the floor, please ensure that the floor covering immediately outside the enclosure will not be affected by water.



This product has been treated with Clean & Clear™ easy clean glass treatment, a protective barrier which creates a 'non-stick' surface on your glass, helping to resist lime scale build up and water spots. For further information on Clean & Clear™ please visit www.aprilproducts.co.uk

Aftercare

Clean & Clear™ glass can be cleaned with any suitable nonabrasive glass cleaner - with PH value of between 3-11; the coating will not be damaged. Avoid surfactants and heavily perfumed products. Vinegar and water based products are very effective. Do not use abrasive scrubbing cleaners or equipment for cleaning.

Warranty

Limited 5 year Warranty for Clean & Clear™ treatment: To guarantee treated surfaces will remain more repellent than untreated glass for 5 years from start of use, as long as basic manufacturer maintenance recommendations are followed and no harsh or abrasive cleaners are used.

Aftercare & Reapplication Kit

To continue the benefits of the Clean & Clear™ glass treatment an aftercare & reapplication kit is available at www.aprilproducts.co.uk