

Beautifully Traditional

A R C A D E™

TECHNICAL DETAILS

For full technical details on all our products,
please visit our website www.arcadebathrooms.com

White ceramic tap levers (pair)

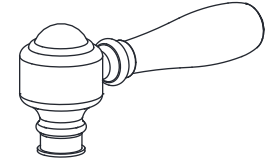
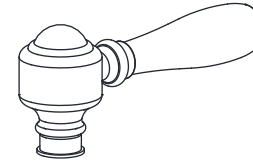
Matt black ceramic tap levers (pair)

Brass tap levers (pair)

ARC65 NKL, ARC65 CHR

ARC66 NKL, ARC66 CHR

ARC67 NKL, ARC67 CHR



INSTALLATION INSTRUCTIONS

INSTALLATION INSTRUCTIONS

Please read these instructions carefully and keep in a safe place for further reference.

General Installation Requirement

The installation must comply with regulations of the Local Water Authority as contained in their bylaws. It will be necessary to fit non-return valves on both the hot and cold feeds. It is very important that all pipework is flushed thoroughly after installation to avoid impurities damaging the ceramic discs.

Minimum/Maximum working pressure

These taps are suitable for high and low pressure installations. They are fitted with quarter turn ceramic disc headwork which provides a smooth movement. The minimum work pressure is 0.2 bar. The maximum work pressure is 5 bar. If the mains pressure is over 5 bar, a pressure reducing valve should be fitted.

Approvals

All taps are manufactured using materials tested and approved under the Water Bylaws Scheme and comply with requirements of European standard EN200 where applicable.

Preparations and bylaw requirements

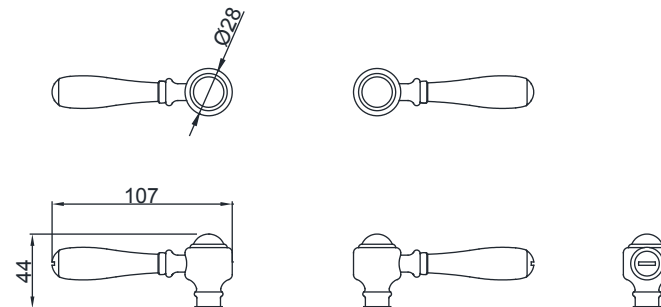
Water Bylaws require that where hot water is supplied from tank and cold from mains, non return valves are fitted on both hot and cold pipes as close as possible to the tap. These are not supplied. Where combination boilers are fitted, it is only necessary to shut off the incoming mains and turn the boiler off. Non return valves are not required.

Warning

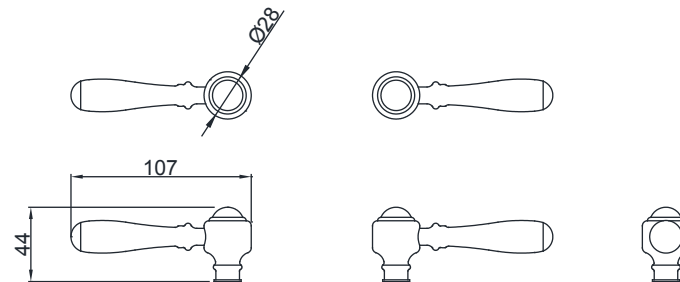
Before installing the new taps, it is essential that you thoroughly flush through the supply pipes in order to remove any remaining swarf, solder or other impurities. Failure to carry out this simple procedure could cause problems or damage to the working of the taps.

These hints are prepared for your guidance; you must exercise due care at all times. We do not accept responsibility for any problems that may occur through incorrect installation.

DIMENSIONS



White & Matt black ceramic tap levers



Brass tap levers

NOTE: ALL DIMENSIONS IN MILLIMETRES

Beautifully Traditional

ARCADE™

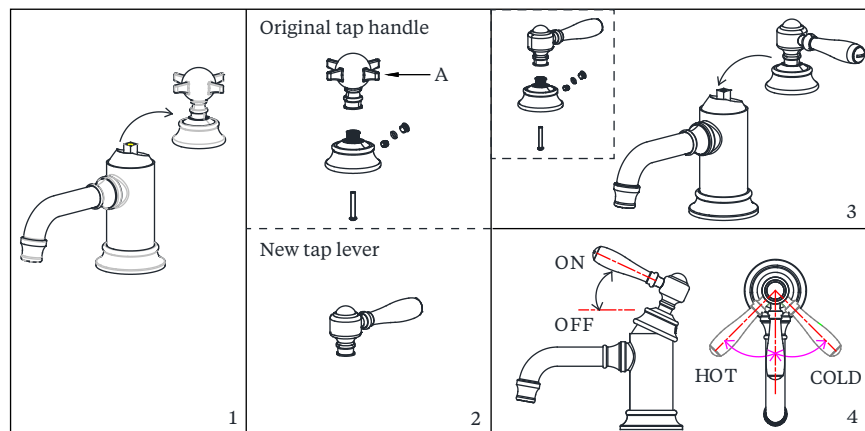
INSTALLATION INSTRUCTIONS

First shut off your water heating system, then with your mains stop cock closed, open the lowest cold and hot taps in the house and allow to run until the cold storage tank and pipes are empty (the hot storage cylinder always remains full). Fitting isolating valve to inlet feeds is recommended for ease of maintenance.

INSTALLATION

Note: Remember to turn off mains water supply before connecting to any existing pipe work.

- ARC35 ARC35 CHR Arcade mini single lever basin mixer without pop up waste
- ARC12 ARC12 CHR Arcade single lever basin mixer without pop up waste
- ARC13 ARC13 CHR Arcade single lever bidet mixer with pop up waste

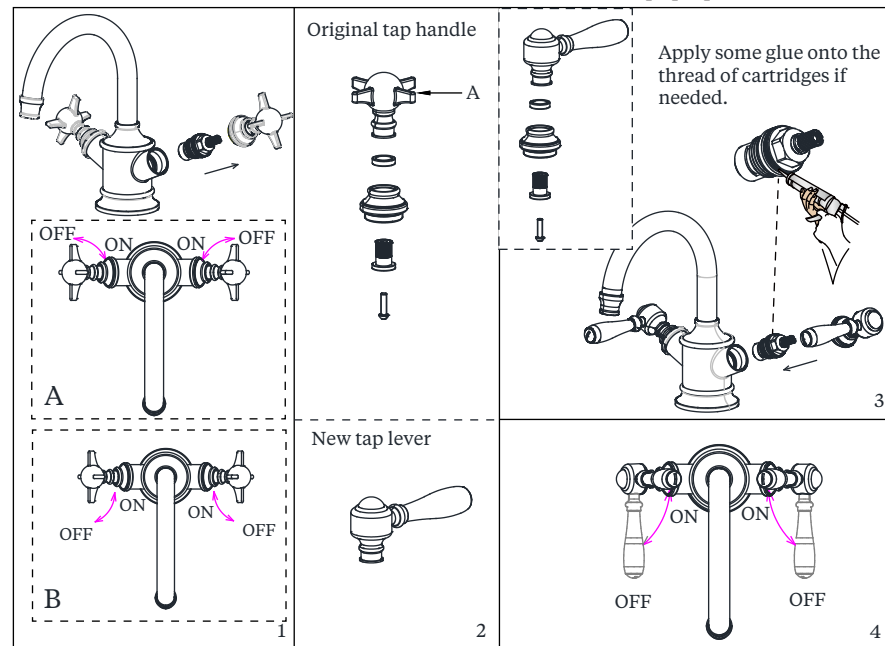


1. Set the original tap handle on OFF position.
2. Screw down the original tap handle, disassemble the original tap handle and replace part A of the original tap handle with new tap lever supplied as above diagram 2.
3. Finally install the new lever onto the tap body.

- White ceramic tap levers (pair)
- Matt black ceramic tap levers (pair)
- Brass tap levers (pair)

- ARC65 NKL, ARC65 CHR
- ARC66 NKL, ARC66 CHR
- ARC67 NKL, ARC67 CHR

ARC14 ARC14 CHR Arcade dual lever basin mixer without pop up waste



As above diagram 1, if the tap supplied is as shown on diagram A, follow below steps to achieve the recommended lever positions as shown on diagram 4.

1. Screw down the original tap handles, then remove the two cartridges from the tap body.
2. Swap the left & right cartridges, and then install the cartridges onto the tap body on OFF position.
3. Disassemble the original tap handle and replace part A of the original tap handle with new tap lever supplied as above diagram 2.
4. Finally screw on the new levers as per the recommended lever position.

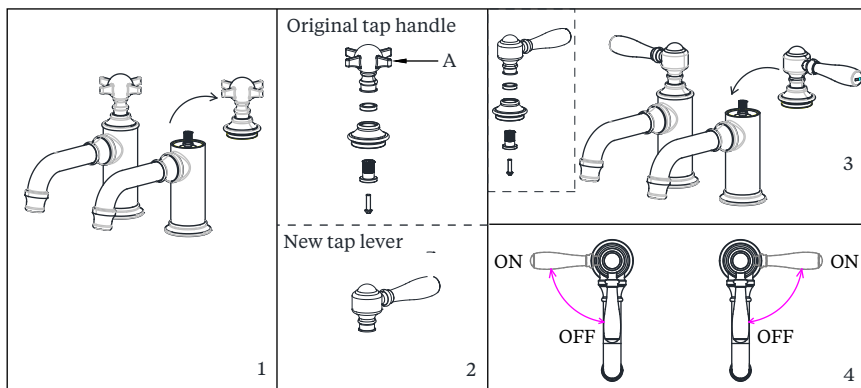
www.arcadebathrooms.com

INSTALLATION INSTRUCTIONS

If the tap supplied is as shown on diagram B, follow below steps to achieve the recommended lever positions as shown on diagram 4.

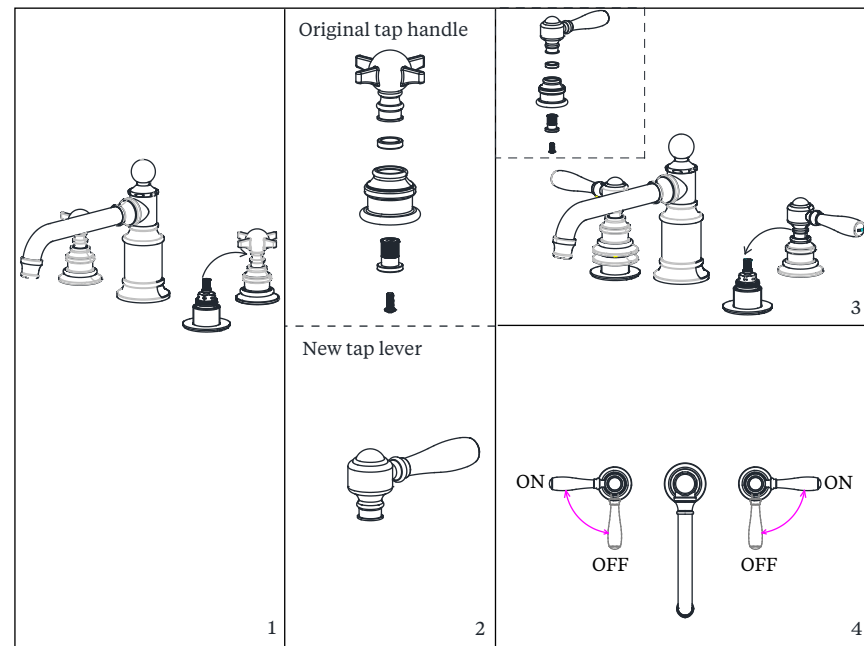
1. Set the original tap handle on OFF position.
2. Screw down the original tap handle, disassemble the original tap handle and replace part A of the original tap handle with new tap lever supplied as above diagram 2.
3. Finally install the new levers onto the tap body as per the recommended lever position.

ARC17 ARC17 CHR Arcade basin pillar taps
ARC36 ARC36 CHR Arcade cloakroom basin pillar taps



1. Set the original tap handles on OFF position.
2. Screw down the original tap handle, disassemble the original tap handle and replace part A of the original tap handle with new tap lever supplied as above diagram 2.
3. Finally install the new lever onto the tap body.

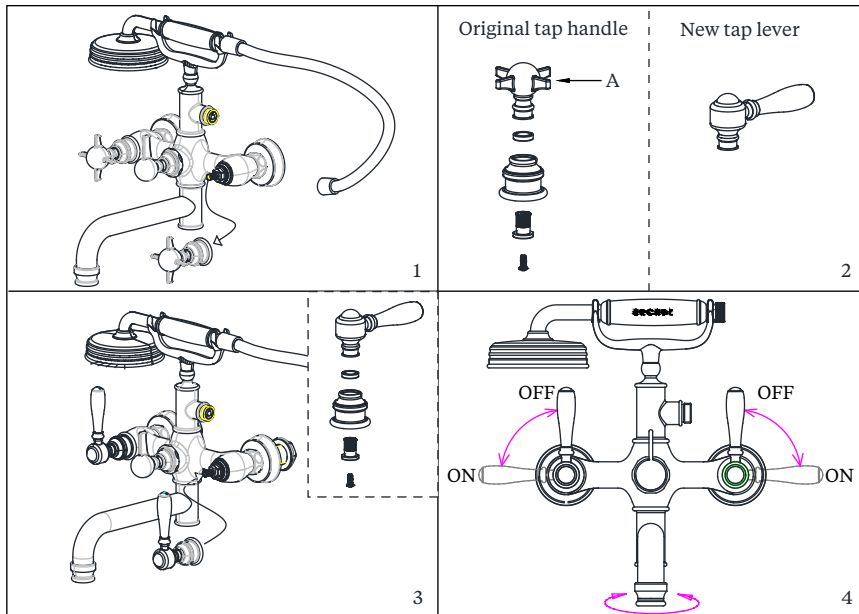
ARC15 ARC15 CHR Arcade three hole basin mixer taps - deck mounted without pop up waste



1. Set the original tap handles on OFF position.
2. Screw down the original tap handle, disassemble the original tap handle and replace part A of the original tap handle with new tap lever supplied as above diagram 2.
3. Finally install the new lever onto the tap body.

INSTALLATION INSTRUCTIONS

ARC16 ARC16 CHR Arcade three hole basin mixer taps - wall mounted - without pop up waste
ARC18 ARC18 CHR Arcade bath shower mixer - deck mounted with brass handle handset
ARC19 ARC19 CHR Arcade bath shower mixer - wall mounted with brass handle handset



1. Set the original tap handles on OFF position.
2. Screw down the original tap handle, disassemble the original tap handle and replace part A of the original tap handle with new tap lever supplied as above diagram 2.
4. Finally install the new lever onto the tap body.

ATTENTION

Having first checked all new connections, turn on the mains stop cock, close all taps except the new taps and as the system starts to refill, check for leaks. Once you have satisfied yourself that there are no leaks, switch on the water heating.

MAINTENANCE

Note : Remember to turn off the water supply before commencing any maintenance.

Cleaning the headwork

The concealed headwork should give trouble free service, but in the event of any problem, service is straight forward.

To remove the headwork

Unscrew the top of the tap and then use a suitable adjustable spanner (not supplied) to loosen the nut. Take the headwork out and wash it with clean running water. Make sure any trapped debris has been removed. Dry and lightly grease the seal (only use silicone grease). Refit the headwork followed by the handle body and lever.

CLEANING

The nickel/chrome plate we use on our taps is very durable, nevertheless care should be taken when cleaning. It should be cleaned only with warm soapy water followed by rinsing with clean water and drying with a soft cloth. All finishes are vulnerable to acid attack and some strong substances such as household cleaners, disinfectants, denture cleaners, hair dyes, wine making and photographic chemicals can cause the surface to go black or peel.

THE QUALIFICATIONS

This product should only be fitted by a qualified plumber to the equivalent of UK NVQ (National Vocational Qualification) or SNVQ (Scottish National Vocational Qualification) Level 3. Should the installation be completed by a non-qualified person then the guarantee may be considered invalid.