

Doc M Contour 21+ Close Coupled Pack LH & Standing Washbasin

ILLUSTRATED

S0683	Doc M Contour 21+ close coupled left hand corner pack, WC pan, water saving delay fill cistern with spatula lever, basin, grab rails, hinged support rail with toilet roll holder, seat no cover with retaining buffers, copper tails on TMV3 mixer tap
S2252	Portman 21 washbasin 50cm, 1 taphole, no overflow or chainstay hole
A6697	Contour 21+ 1 hole thermostatic basin mixer, single sequential lever with copper tails
S8734	Waste 1¼" brass swivel plug waste, 80mm unslotted tail
S8910	Trap 1¼" plastic bottle, 75mm seal, multi-purpose outlet
S6454	Contour 21 grab rail straight 60cm long x 35mm diameter
E0157	Wall fixing set

ILLUSTRATED PRODUCT DETAILS

Sizes

S2252 w:50 x d:42

Weights

S0683	69.65 KG
S2252	12.73 KG
A6697	2.10 KG
S8734	0.35 KG
S8910	0.20 KG
S6454	2.00 KG
E0157	0.16 KG

Materials

S0683	Mixed Material
S2252	Vitreous China
A6697	Chrome Plated Brass
S8734	Chrome Plated Metal
S8910	Plastic
S6454	Aluminium
E0157	Metal

Finishes

S0683	White (AC)
S2252	White (01)
A6697	Chrome (AA)
S8734	Chrome (AA)
S8910	Neutral / No Finish (67)
S6454	White (AC)
E0157	Neutral / No Finish (67)









Capacity

S0683 5 litres

Flow rates

S0683	4 Litres per minute @ 3 bar pressure
A6697	3.9 Litres per minute @ 3 bar pressure

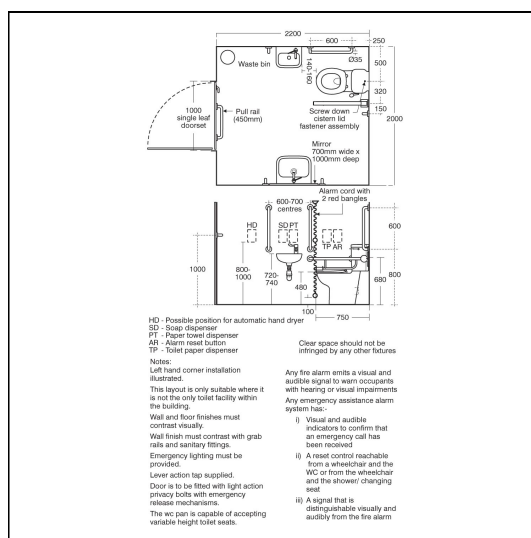
FINISH OPTIONS

		
(AC) White	(LI) Blue	(LI) Grey
		
(MY) Stainless Steel finish	(RN) Charcoal	(GQ) Red
		
(36) Blue	(MY) Stainless Steel finish	

Standards

E: info@idealspec.co.uk | T: 0870 122 8822 | F: 0870 122 8282 | www.idealspec.co.uk

Ideal Standard (UK) Ltd. makes every effort to ensure that the information provided on its website is accurate. However, we cannot guarantee this, and accept no liability for any information or advice given via its website.



ACCREDITATIONS



FEATURES



Armitage
Shanks

Doc M Contour 21+ Close Coupled Pack LH & Standing Washbasin

Vitreous china to BS 3402.

BS8300 compliant

Special Notes

Room set comprises a close coupled wheelchair accessible corner arrangement and additional items for a standing height washbasin fixed at 780-800mm from floor to front rim. Doc M packs are available both right and left hand corner arrangement, illustrated is left hand arrangement. Supplied with layout drawings, detailing the fixing positions necessary for Doc M compliance.

Additional rails S6454 x 2.