

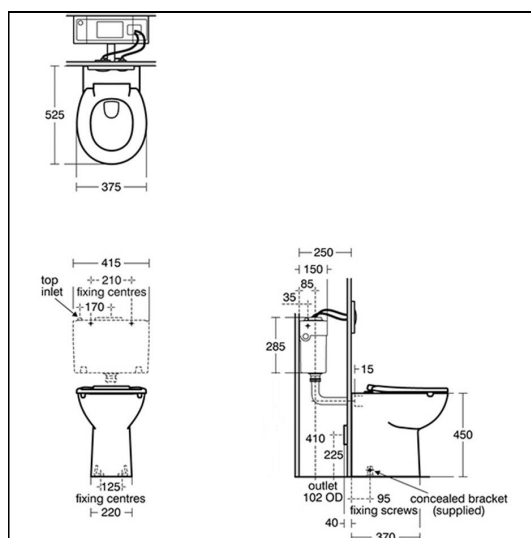
Contour 21+ Raised Height Back-to-Wall Rimless Toilet

ILLUSTRATED

- S0440** (WC H) Contour 21+ raised height back-to-wall rimless toilet bowl with raised horizontal outlet and anti-microbial glaze
- S3617** Conceala 2 4.5 or 6 litre cistern, single flush syphon, side supply, internal overflow, plastic flushbend and long CP lever
- S4066** Contour 21 toilet seat only, top fixing hinges and retaining buffers

OPTIONS

- R0158** Prosys electronic conversion kit for proximity actuated flushplates (Altes & Symfo) (120 depth frames and cisterns only)
- R0099** Prosys electronic conversion kit for infra-red actuated flushplates (Septa Pro E1 & E2) (120 depth frames and cisterns only)
- R0137** Septa Pro inspection plate white
- S3643** Conceala 2 4.5/3 or 4/2.6 litre cistern, dual flush valve, side supply, internal overflow, alternative height plastic flushbends, no flushplate/button
- S3640** Conceala 2 4.5 litre cistern, single flush valve, side supply, internal overflow and alternative height plastic flushbends
- R0317** Prosys 120 depth WC cistern, mechanical, front actuation
- R0318** Prosys 120 depth WC cistern, pneumatic, front actuation
- S4065** Contour 21 toilet seat and cover, top fixing hinges
- E4463** Karisma flush plate, dual flush, unbranded for Conceala 2 cisterns
- S4513** Palm push button pneumatic, stainless steel for 31mm maximum thickness partition
- S0767** Oleas M2 mechanical dual flushplate Armitage Shanks - white
- S0857** Oleas P2 pneumatic dual flushplate Armitage Shanks - chrome
- S0858** Septa Pro M1 mechanical metal dual flushplate Armitage Shanks
- S0859** Septa Pro M2 mechanical metal single flushplate Armitage Shanks
- S0775** Septa Pro P1 pneumatic metal dual flushplate Armitage Shanks
- S0860** Septa Pro P2 pneumatic metal dual small flushplate Armitage Shanks
- S0776** Septa Pro P3 pneumatic metal single small flushplate Armitage Shanks
- R0136** Septa Pro P4 pneumatic metal dual small flushplate with raised adjustable buttons
- P0109** Septa Pro XS pneumatic push button no logo - chrome
- S0772** Septa Pro E1 electronic (infrared) & manual metal dual flushplate Armitage Shanks
- S0773** Septa Pro E2 electronic (infrared) metal dual flushplate Armitage Shanks
- R0130** Altes NT1 electronic (proximity) ceramic dual flushplate



FEATURES



Contour 21+ Raised Height Back-to-Wall Rimless Toilet

- R0129** Ideal Standard - white
Symfo NT1 electronic (proximity) glass dual flushplate Ideal Standard - white
- S4305** Panekta outlet connector to convert horizontal outlet wcs to P trap
- S4300** Panekta outlet connector to convert horizontal outlet wcs to S or turned P trap

ILLUSTRATED PRODUCT DETAILS


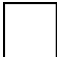

Weights

- S0440** 22.70 KG
- S3617** 3.00 KG
- S4066** 1.55 KG

Materials

- S0440** Vitreous China
- S3617** Plastic
- S4066** Plastic

Finishes

- S0440**  White with SmartGuard (HY)
- S3617**  Neutral / No Finish (67)
- S4066**  White (01)

Capacity

- S3617** 4.5 litres

Designer

Robin Levien, RDI

FINISH OPTIONS



Standards

WC bowl to BS EN 997 & BS EN 33

Special Notes

WC Pan screwed to floor using concealed brackets (supplied). Oleas, Solea, Altes & Symfo are compatible with Prosys cisterns only. Please see flushplate section for full finish/colour options.