

ILLUSTRATED

S0686 Doc M Contour 21+ back to wall right hand corner pack, rimless WC pan, water saving delay fill Conceala cistern with spatula lever, grab rails, hinged support rail with toilet roll holder, seat no cover with retaining buffers, copper tails on TMV3 mixer tap

Weights

S0686 69.65 KG

Finishes

S0686 White (AC)

Materials

S0686 Mixed Material

Capacity

S0686 6.0 litres

Flow rates

S0686 4 Litres per minute @ 3 bar pressure

FINISH OPTIONS



(AC) White



(LI) Blue



(LJ) Grey



(MY) Stainless Steel



(RN) Charcoal

Standards

Vitreous china to BS 3402

BS 8300 compliant

Special Notes

Doc M packs are available both right and left hand corner arrangement, the washbasin in the pack is handed so the tap is positioned closest to the seated user. Supplied with layout drawings, detailing the fixing positions necessary for Doc M compliance.

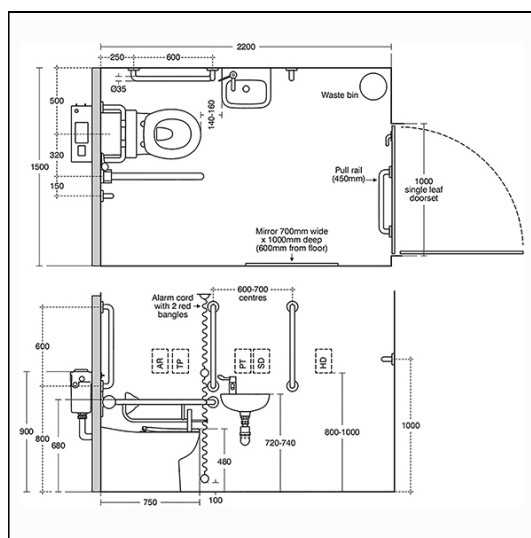
White:Ral=9016, LRV=87

Blue:RaI=5011. LRV=6

Red:RaI=3020, LRV=12

Grev:Ral=7005. LRV=19

Charcoal:Ral=7016, LRV=8



ACCREDITATIONS



FEATURES

