

Sensorflow Wave basin tap 1 hole (mains)

ILLUSTRATED

A6161 Sensorflow Wave basin tap 1 hole, mains

ILLUSTRATED PRODUCT DETAILS

Weights

A6161 2.20 KG

Finishes

A6161  Chrome (AA)

Materials

A6161 Chrome Plated

Flow rates

A6161 3.7 Litres per minute @ 3 bar pressure

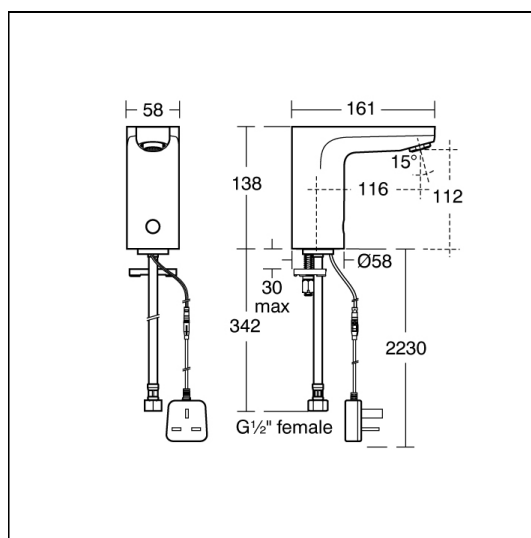
Special Notes

Minimum operating pressure 1 bar. Fitted with a proximity sensor which will automatically shut off 2 seconds after sensor no longer detects movement.

Automatic flow stop factory set to operate after 55 seconds of continuous operation. Adjustable duty flush/purge facility.

Consideration should be given to safe hot water delivery and the use of an appropriate temperature reduction device, please see A5900AA (for use with 15mm pipework) or A5901AA (for use with 22mm pipework).

Mains powered Sensorflow products must be connected to a continuous permanent power supply of these require 220-240 volts and each 1 having its own fuse spur.



ACCREDITATIONS

A6161(AA)

Unified
Water Label



3.70 Litres Per Minute



FEATURES

