

CLARET

Wall Mounted Bath Filler

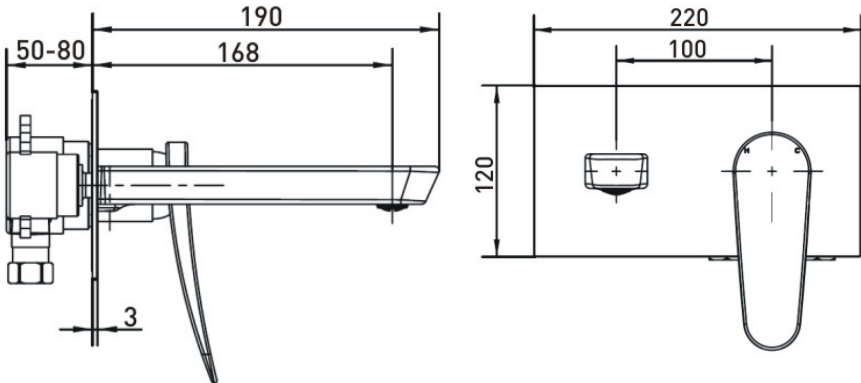
Product Specification

- Product Codes & Finishes:
- CLR WMBF C (Chrome)  
CLR WMBF WHT (White & Chrome)
- Product Type:
- Contemporary
- Construction:
- Body is of brass construction and is designed to conform to BS EN 200
- Cartridge Type:
- 45mm Cartridge
- Supply:
- Suitable for all plumbing systems
- Inlet Connections:
- 3/4" BSP
- Working Pressures:
- Min 0.3bar, Max 5.0bar



Additional Information

- Supplied with metal handles.
- Chrome plated to BS EN 248.



Flow Rates (litres per minute)

System Pressure	0.3bar	0.5bar	1bar	2bar	3bar	5bar
CLR WMBF C (mixed)	13.9	18.0	26.2	31.4	35.0	38.3

- Technical Advice:
- For further information please call 0844 7016273  
or email [customercare@bristan.com](mailto:customercare@bristan.com)
- Guarantee:
- 5 years covering manufacturing faults.