

CHC 1/2 C

CHOICES Tap Range Choices Basin Taps Chrome



*Shown with CHC SNUB C handles

Features:

- Metal Backnuts
- Ceramic Disc
- Product supplied without heads
- Chrome plated to BS EN 248

Product Certifications:

WRAS Certificate no. 1501954
WRAS Expiry: 31/01/2020



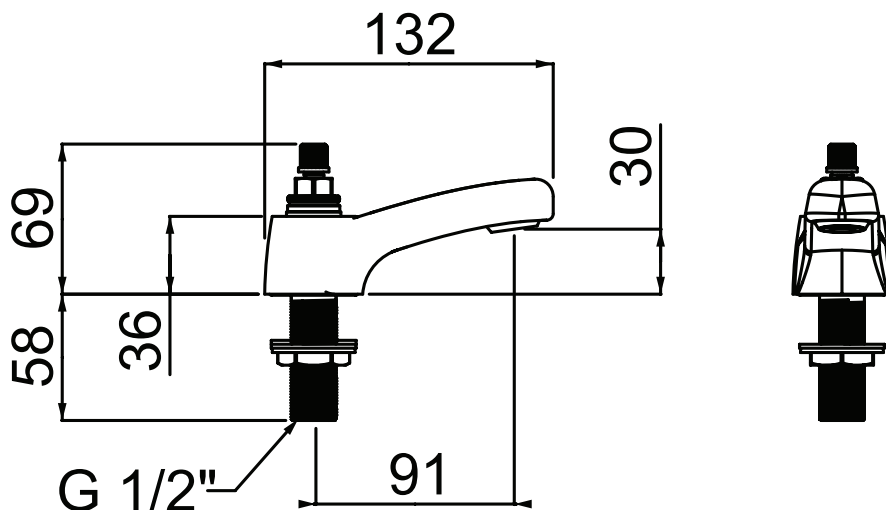
For more products, visit our website:



Specification

Style:	Contemporary
Product Type:	Bathroom Taps
Finish/Colour:	Chrome
Main Construction Material:	Brass
Mount Type:	Deck
Handle Type:	N/A
Connection Inlet:	1/2" BSP
Number of Tap Holes Required:	2
Valve/Cartridge Type:	1/2" Ceramic Disc Valves
Plumbing System Suitability:	All
Working Pressure Range:	Min 0.2 bar - Max 5 bar
Maximum Hot Water Temperature: °c	65
Maximum Dynamic Pressure: (bar)	5
Maximum Static Pressure: (bar)	10
Flow Type:	Single Flow
Flow Rate: (l/min @ 3 bar)	31.3
Connection Outlet:	M24 Flow Straightener
Isolation Included:	No

Dimensions (measurements in mm)



Flow Rates (l/min)

System Pressure (bar)	0.2	0.5	1	2	3	5
CHC 1/2 C	7.2	12.4	18.1	25.5	31.3	40.4

TECHNICAL
DATA
SHEET



BRISTAN
TAPS & SHOWERS

D3