



### Features:

- Metal Backnuts
- Ceramic Disc
- Product supplied without heads
- Chrome plated to BS EN 248

### Product Certifications:

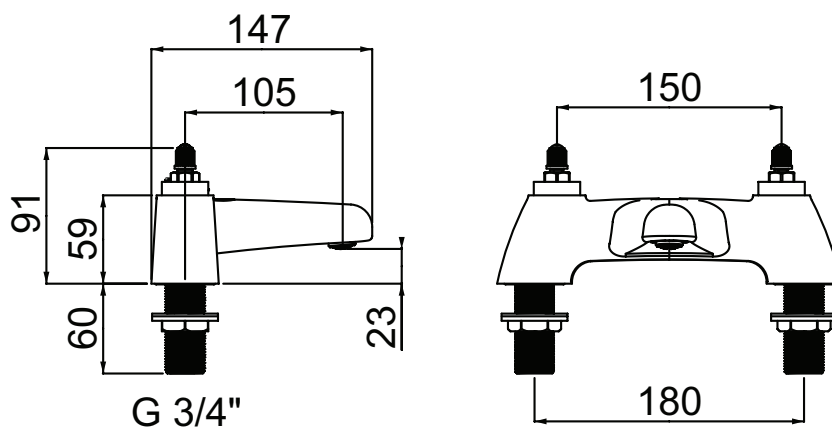
For more products, visit our website:  
<http://www.bristan.com>



### Specification

Style:	Contemporary
Product Type:	Taps
Main Construction Material:	Brass
Mount Type:	Deck
Handle Type:	N/A
Connection Inlet:	3/4" BSP
Connection Outlet:	N/A
Number of Tap Holes:	2
Valve/Cartridge Type:	1/4 turn 3/4" Ceramic Disc Valves
Plumbing System Requirements:	All
Working Pressure Range:	Min. 0.2, Max. 5.0 Bar
Maximum Hot Water Temperature: °C	65
Maximum Dynamic Pressure: (bar)	5
Maximum Static Pressure: (bar)	10
Flow Type:	Single
Flow Rate: (l/min @ 3 bar)	N/A
Isolation Included:	No

### Dimensions (measurements in mm)



### Flow Rates (l/min)

System Pressure (bar)	0.2	0.5	1	2	3	5
CHC BF C	14.4	24.3	--	--	--	--

## TECHNICAL DATA SHEET



# BRISTAN

TAPS & SHOWERS D2