

TECHNICAL DATA SHEET

EBONY Basin Mixer

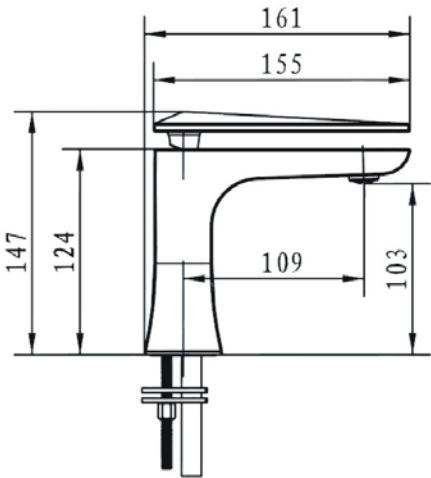
Product Specification

Product Code:	EBY BAS C
Finish:	Chrome plated
Product Type:	Traditional
Construction:	Bodies are of all brass construction and are designed to conform to BS EN 200
Valve Type:	22mm ceramic disc cartridge
Supply:	Suitable for all plumbing systems
Inlet Connections:	G ½ " BSP
Working Pressures:	Min 0.1 Bar Max 5.0 Bar



Additional Information

- Supplied with metal fixing nut
- Supplied with clicker waste
- Chrome plated to BSN EN 248



Flow Rates (litres per minute)

System Pressure	0.1bar	0.3bar	0.5bar	1.0 bar	2.0 bar	3.0bar	4.0bar	5.0bar
EBY BAS C (Hot)	2.8	4.4	6.1	8.5	12	14.7	17	19
EBY BAS C (Cold)	2.6	4.3	5.7	8.2	11.8	14.5	16.9	18.89
EBY BAS C (Mixed)	2.7	4.3	6.8	7.9	11.2	13.7	15.9	17.77

Technical Advice: For further information please call 0844 7016273 or email customercare@bristan.com.

Guarantee: 5 years covering manufacturing faults.