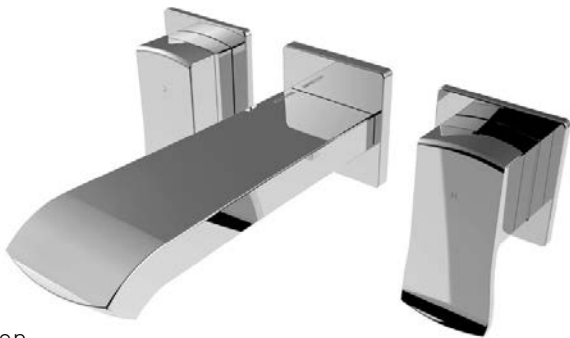


# TECHNICAL DATA SHEET

## DESCENT Wall Mounted Bath Filler

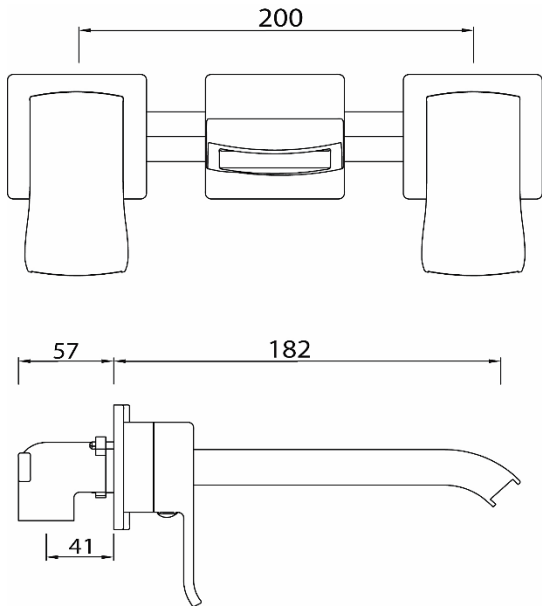
### Product Specification

Product Code:	DSC WMBF C
Finish:	Chrome plated
Product Type:	Contemporary
Construction:	Bodies are of all brass construction and is designed to conform to BS EN 200
Valve Type:	¾" CD Valve ¼ Turn
Supply:	Suitable for all plumbing systems
Inlet:	22mm Compression Threaded Tail
Working Pressures:	Min 0.5 Bar Max 5.0 Bar



### Additional Information

- Chrome plated to BS EN 248.
- Supplied with metal handles.



### Flow Rates (litres per minute)

System Pressure	0.5 bar	1.0 bar	2.0 bar	3.0 bar	4.0 bar	5.0 bar
DSC WMBF C (mixed)	22.4	32.5	45.2	55.4	63.9	71.4

**Technical Advice:** For further information please call 0844 7016273 or email [customercare@bristan.com](mailto:customercare@bristan.com).

**Guarantee:** 5 years covering manufacturing faults.

Bristan, Birch Coppice Business Park, Dordon, Tamworth, B78 1SG  
Telephone: 0844 701 6274 Facsimile: 0844 701 6275  
Web Site: [www.bristan.com](http://www.bristan.com) Email: [enquire@bristan.com](mailto:enquire@bristan.com)



The information contained on this page was correct at date of issue. Fitting dimensions are provided as a guide only. Some variation may occur due to manufacturing tolerances. Bristan pursues a policy of continuing improvement in design and performance of its products and so reserves the right to change specifications without prior notice.