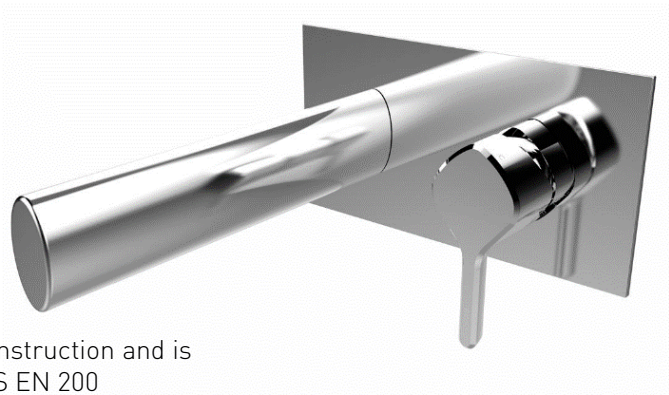


FLUTE

Wall Mounted Bath Filler

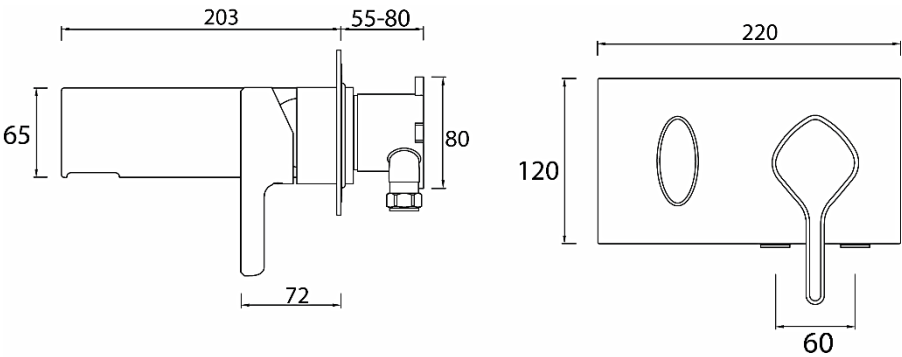
Product Specification

Product Code:	FLT WMBF C
Finish:	Chrome plated
Product Type:	Contemporary
Construction:	Bodies are of all brass construction and is designed to conform to BS EN 200
Cartridge Type:	45mm Cartridge
Supply:	Suitable for high plumbing systems
Inlet Connection:	15mm Compression
Working Pressures:	Min 1.0 Bar Max 5.0 Bar



Additional Information

- Chrome plated to BS EN 248.
- Supplied with metal handle.



Flow Rates (litres per minute)

System Pressure	1.0 bar	2.0 bar	3.0 bar	4.0 bar
FLT WMBF C (mixed)	20.1	28.8	35.2	40.6

Technical Advice:

For further information please call 0844 7016273 or email [customercare@bristan.com](mailto:customercare@bristan.com).

Guarantee:

5 years covering manufacturing faults.