

N2 SHCVO C

1901 Shower Range 1901 Recessed Thermostatic Dual Control Shower Valve Chrome



Features:

- 15mm inlet connections
- Easy installation with an adjustable faceplate that fits total wall depths from 45mm to 75mm for a perfect flush finish
- Minimum cold water supply temperature is 4°C
- Maximum hot water supply temperature is 65°C
- Fully serviceable from the front

Product Certifications:



WRAS Certificate No: 2405900
WRAS Expiry Date: 31/05/2029

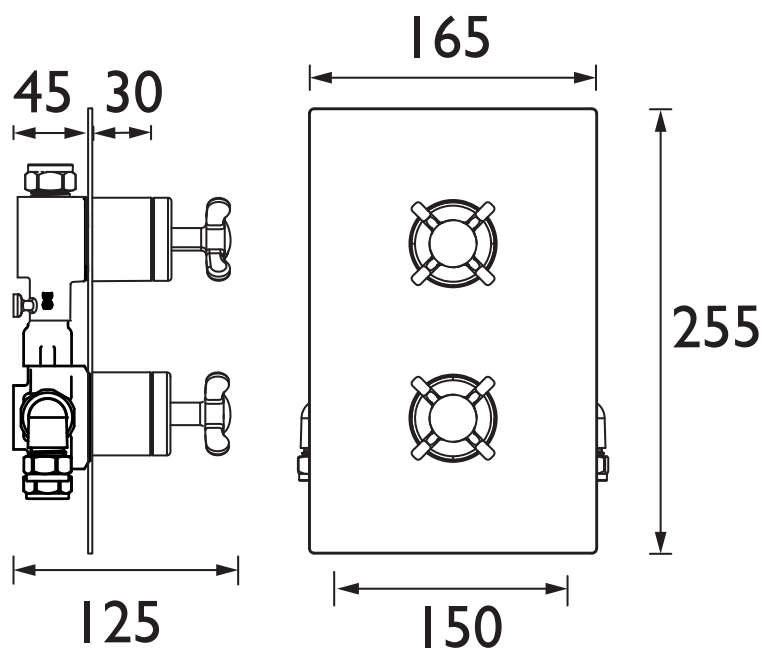
For more products, visit our website:
<http://www.bristan.com>



Specification

Finish/Colour:	Chrome Plated
Main Construction Material:	Brass
No of Controls:	2
Shower Type:	Dual Control
Shower Head Type:	None
Shower Kit:	N/A
Valve/Cartridge Type:	3/4" Ceramic Disc Valve - 1/4 turn
Maximum Hot Water Supply Temperature °C:	65
Plumbing System Suitability:	Suitable for all plumbing systems, ideally balanced
Minimum Dynamic Pressure (bar):	0.2
Maximum Dynamic Pressure (bar):	5
Maximum Static Pressure (bar):	10
Connection Inlet:	15mm Compression
Connection Outlet:	G1/2"
Isolation Valve Included:	No
Check Valve Included:	Yes

Dimensions (measurements in mm)



Flow Rates (l/min)

System Pressure (bar)	0.2	0.5	1	2	3	5
Valve Only/Largest FR (mixed)	9.3	18	26.7	38.7	47.9	61.7
With Flow Limiters (mixed)	--	7.2	9	9.8	10.7	10

TECHNICAL
DATA
SHEET



BRISTAN

D8