

## W500mm x H800mm Flat Heated Towel Rail - Chrome

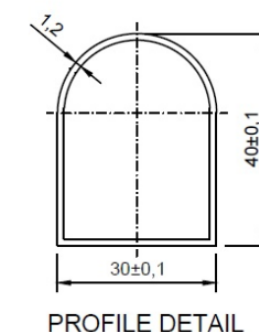
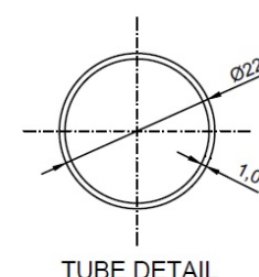
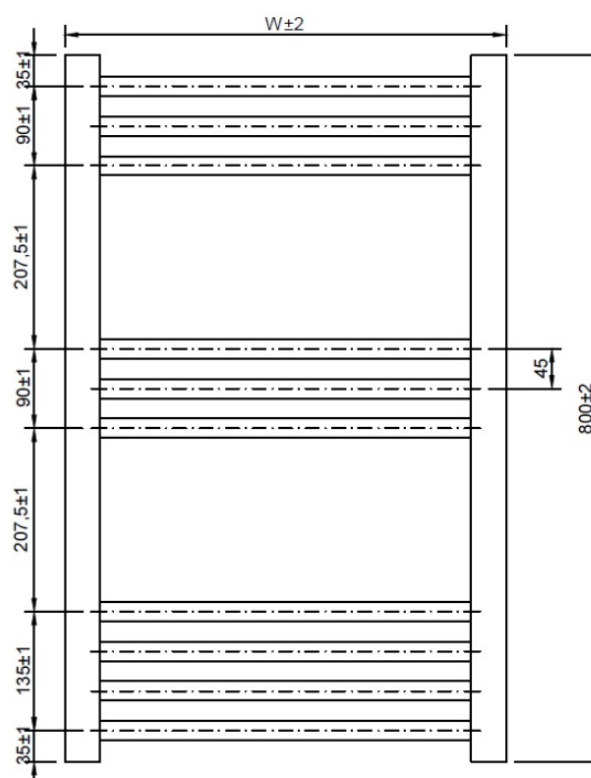
## Product Specification

Product Code:	FHTR5/8
Description:	W500mm x H800mm Flat Heated Towel Rail - Chrome
Barcode:	5217202701009
Construction Material:	Mild Steel
Category:	Radiators
Product Weight (KG):	9.1Kg
BTU / Watts	699 / 205
Standards:	<b>Radiators &amp; Convector:</b> BS EN 442-1:1996



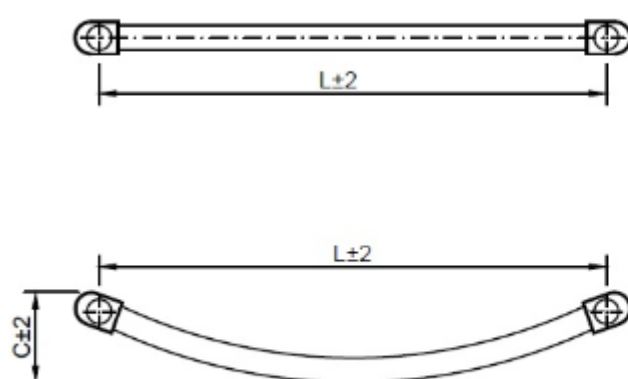
## Features &amp; Benefits

- High quality polished chrome finish
- Maximum working pressure 10bar
- Tested and Certified BS EN 442 Standards
- ISO9001:2008 Registered Manufacturer
- Includes Wall fixings, Wall plugs, Blanking and Bleed plug



## Additional Information

Radiator valves not supplied



W	L	Curved (C)	Tube
300	255	30	10
400	355	40	10
450	405	45	10
500	455	50	10
600	555	60	10
750	705	75	10



## Guarantee:

Care must be taken on installation to avoid damage, we provide a lifetime guarantee against faulty workmanship or materials (excluding serviceable parts) providing they have been installed, cared for and used in line with our instructions.

**CASSELLIE**  
ELEGANT BATHROOMS

Unit 1-6, Howden Way, Howden Clough Road, Morley | Leeds | LS27 0TF  
T: 01924 666590 F: 01924 403071 E: sales@cassellie.co.uk  
**www.cassellie.co.uk**

Cassellie Ltd. Registered in England: number 06932739. Registered Office: Unit 1-6 Howden Way, Morley, Leeds LS27 0TF