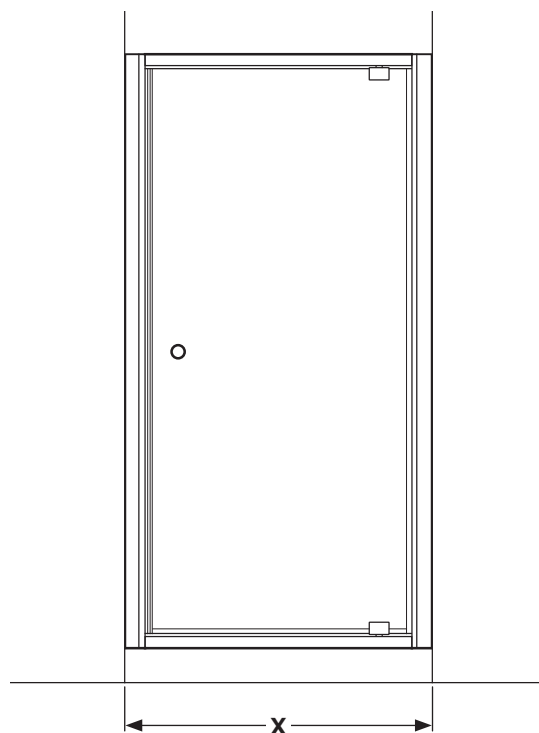


PIVOT DOOR



DIMENSIONS

Check the enclosure size in the table below matches the showertray installation.

700 Door X = 665 - 705mm

760 Door X = 725 - 765mm

800 Door X = 765 - 805mm

900 Door X = 865 - 905mm

***Please read these instructions carefully and keep for future reference.
Incorrect fitting will invalidate the guarantee.***

SAFETY

- Handle glass with great care. Although the glass is very tough, sharp impacts can damage both the glass and metal frame.
- Make sure there are no hidden pipes or cables hidden in the wall where you intend to drill.
- Wear safety goggles, shoes and appropriate clothing.

BEFORE INSTALLATION

- Check that the shower tray is level in all directions. The enclosure will not sit correctly on an uneven surface. If uneven, the wall channels may not fit and the doors may not shut correctly.
- The shower tray and the enclosure must match in size. Attempting to fit the incorrect size of enclosure to the shower tray will result in water leaks.
- The enclosure should be fitted on tiled walls which are sealed with waterproof grout. There must be a good silicone seal between the rim of the shower tray and the wall.
- Always check very carefully that components are vertical.
- To avoid damage, use the opened out packaging to build the enclosure on.

Equipment needed:

Drill, 6.5mm Masonry Bit, 4.5mm & 3mm Metal Bits (general), Crosshead Screwdriver, Spirit Level, Pencil, Silicone Sealant, Tape Measure, Fine Tooth Hacksaw, Masking Tape.

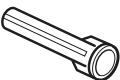

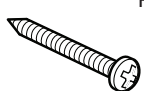





Note: The screws and wall plugs supplied are for masonry walls. For lightweight walls i.e. stud partition, plasterboard etc, use the correct type of fixings.

CUSTOMER CARELINE 01746 713410

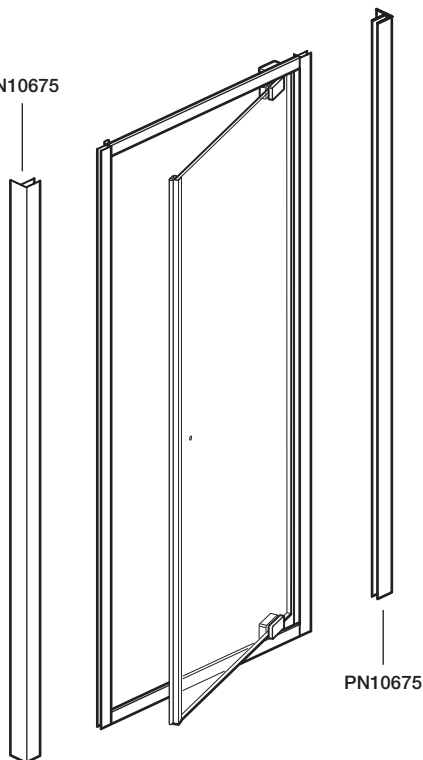
Check contents of pack before installation.

If there is anything missing, contact our Customer Careline for assistance.

CUSTOMER CARELINE: 01746 713410

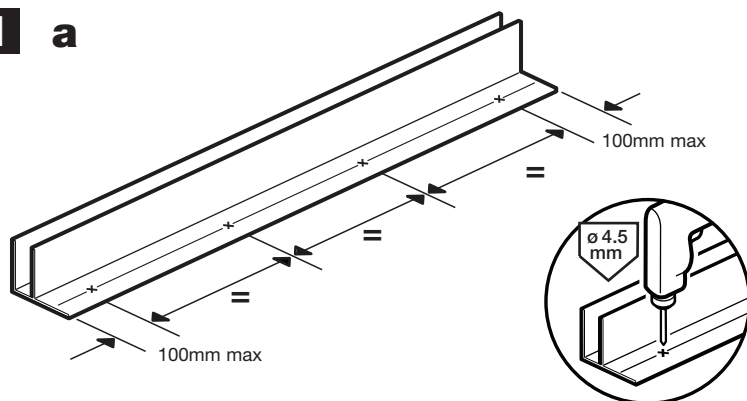
 PN3230 8	 PN60511 1
 PN3225 8	 PN50485 6
 32mm PN3222 6	 PN40331 1
 10mm PN4748 14	 PN40337 1

PN10675

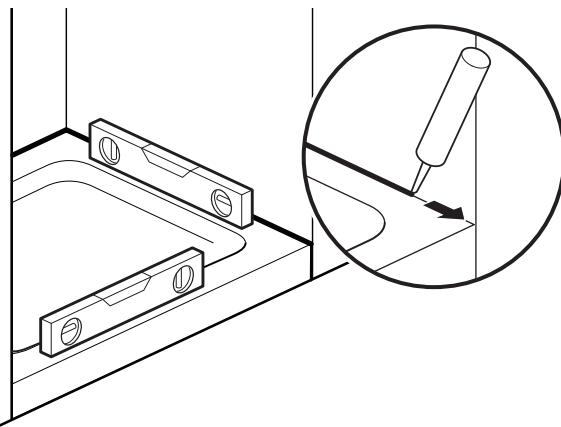


PN10675

1 a



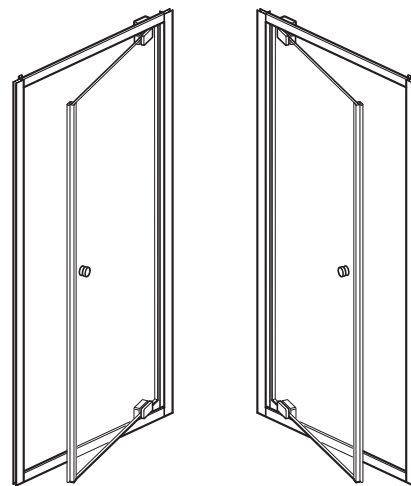
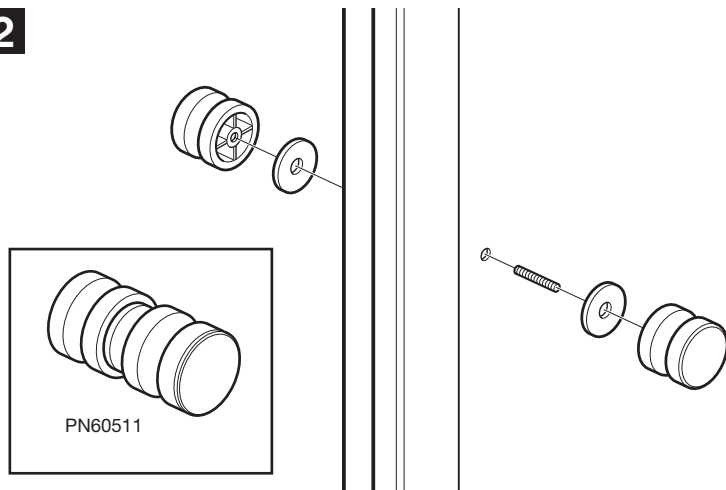
b



a: Drill holes in both wall channels (PN10675) at points shown using a 4.5mm drill bit, through the edge shown and in the grooves.

b: Ensure the shower tray is level in all directions. **IMPORTANT:** Clean the tray and seal the gap between the tray surface and tiles. It is important that the tray is sealed right up to the tray edge so that the bottom of the wall channel is sealed. Failure to do this will cause water to leak under the wall channel and between the tray and tiles, resulting in damp patches on the wall and under the tray.

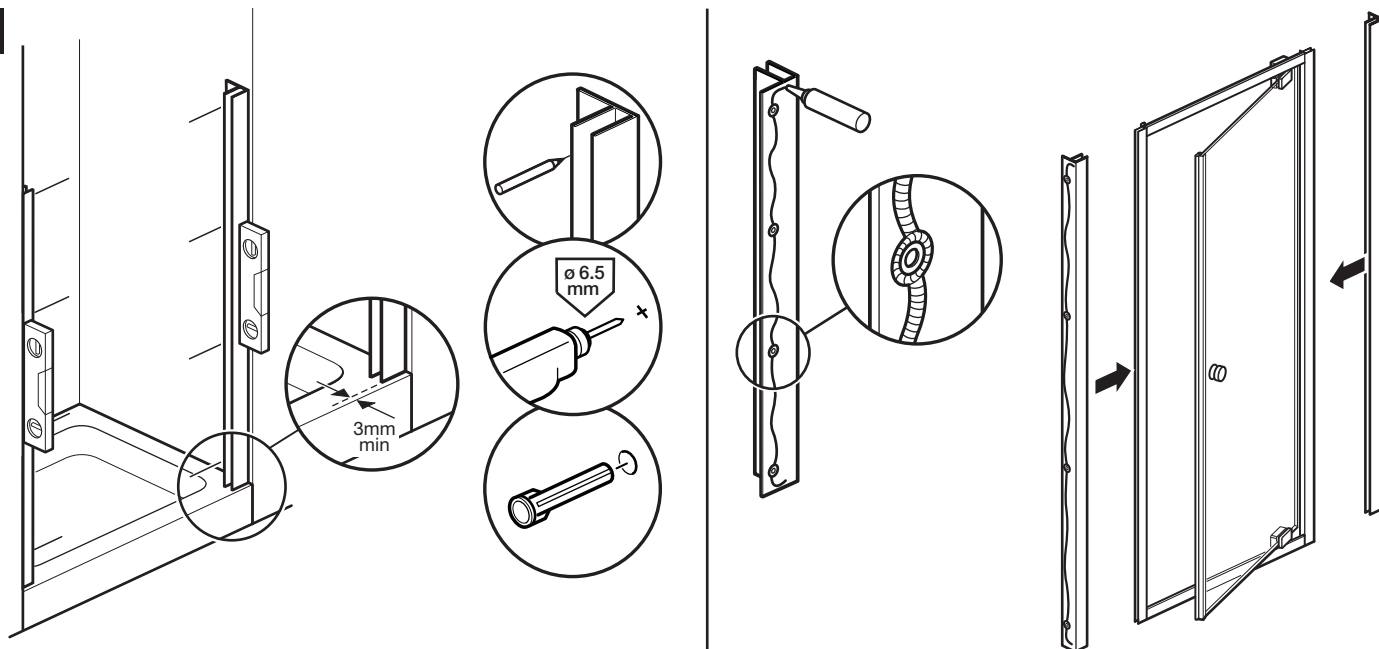
2



Fit the door handle to the door ensuring the plastic washers are fitted each side of the glass.

Choose the opening side for the door (turn over if necessary).

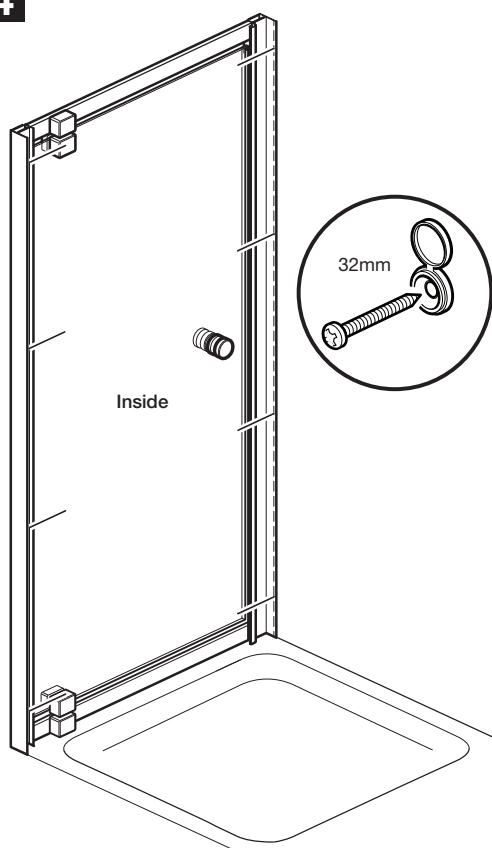
3



Place wall channels on tray ensuring they are vertical and a minimum of 3mm back from the front of the tray. Place masking tape against the wall before marking the drill hole positions. This will prevent the drill bit slipping. Drill 6.5mm holes, 30mm deep and insert wall plugs.

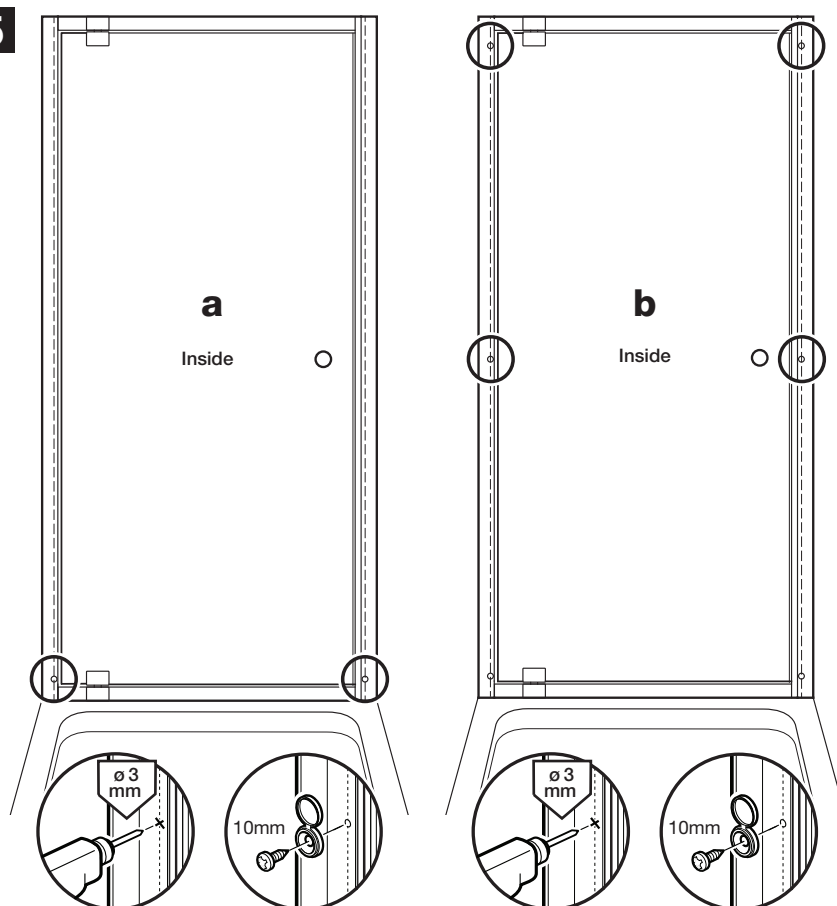
Apply sealant to back of wall channels. Place wall channels onto door.

4



Place door in position on the tray, fix wall channels to the walls (in all 8 positions shown) using 32mm screws and screw caps.

5

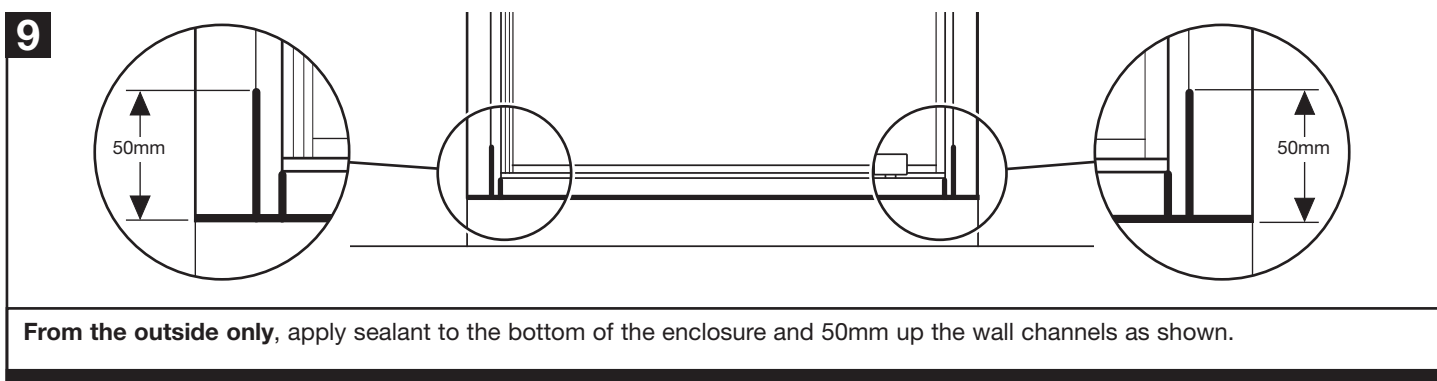
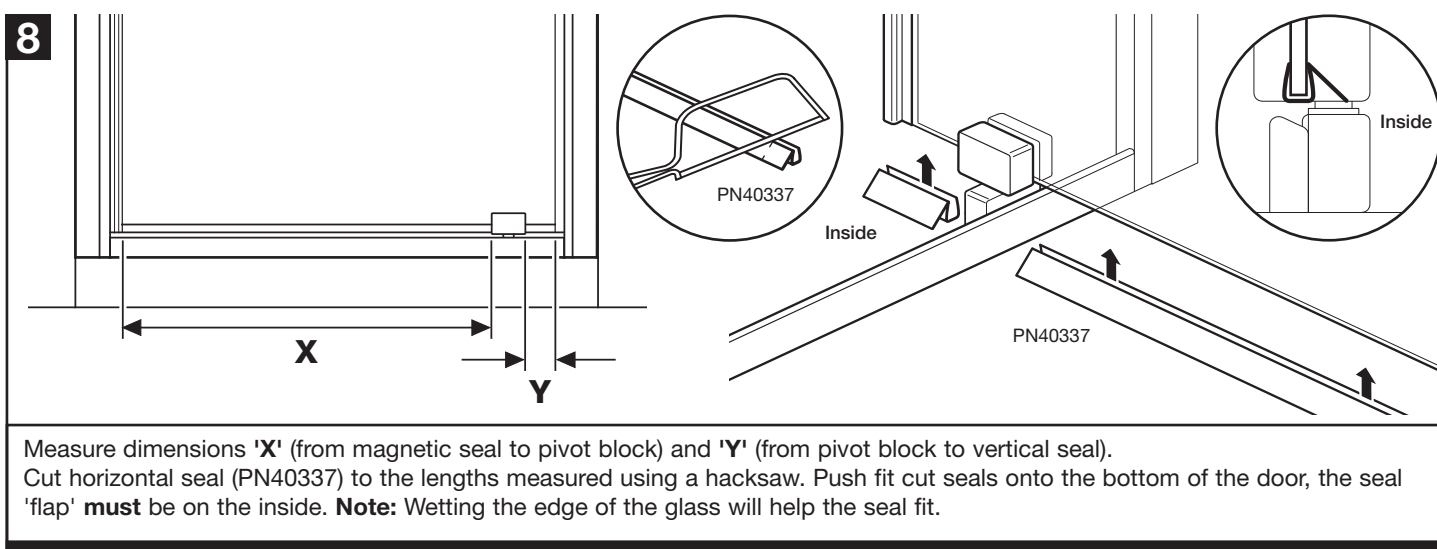
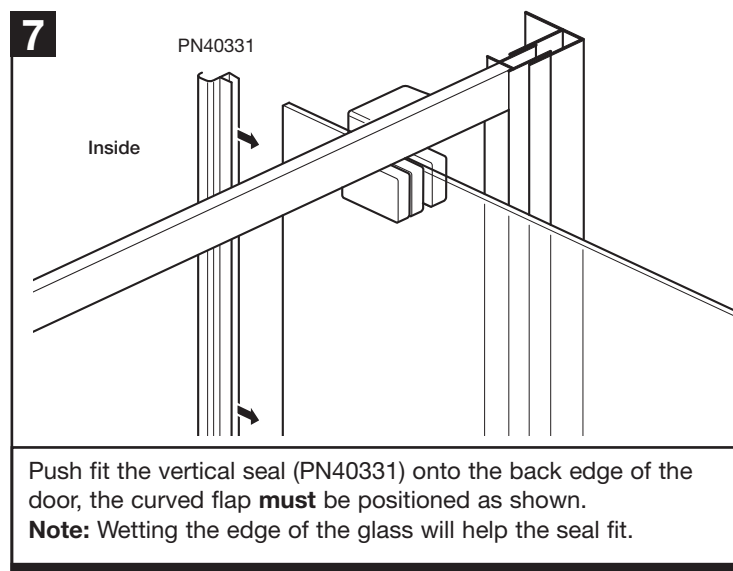
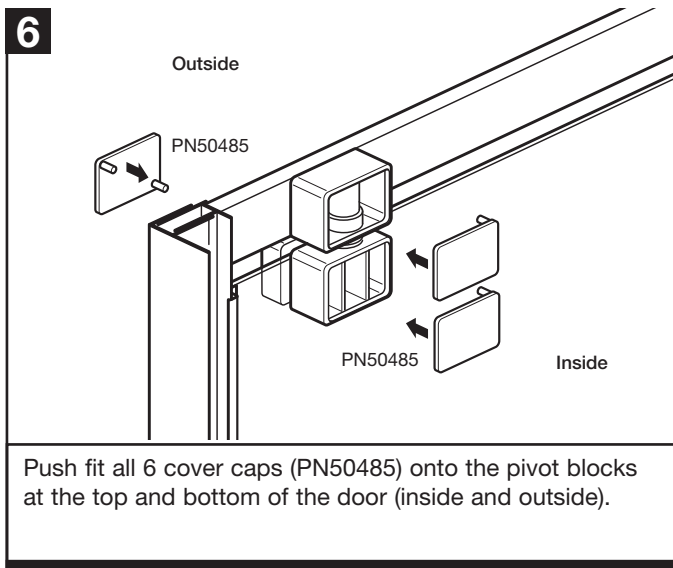


Check door is centrally positioned, perfectly vertical and square in the frame.

a: Drill inside of wall channels using 3mm drill bit in the two lower positions shown. Fix using 10mm screws and screw caps.

b: Check door is centrally positioned, perfectly vertical and square in the frame.

Drill the next four holes in the upper positions shown inside of the wall channels using 3mm drill bit. Fix using 10mm screws and screw caps.



Recycling

Packaging:- The cardboard and polythene parts of this packaging can be recycled.

End of life:- This product contains materials such as aluminium and glass which can be recycled.

Please contact your local authority to find your nearest recycling centre.

IMPORTANT: You must not use the shower for 24 hours after installation of the enclosure.

DO NOT use bleach, scouring powders, solvents or other aggressive cleaning agents. To clean, use warm soapy water and a clean cloth and rinse off.

Please note: There has been a glass coating applied to this product, use a squeegee to remove water and debris.

Periodically check all fixings and tighten if necessary.

CORAM SHOWERS LTD

Stanmore Industrial Estate, Bridgnorth, Shropshire WV15 5HP, UK • Tel: 01746 766466 • Fax: 01746 764140 • www.coram.co.uk