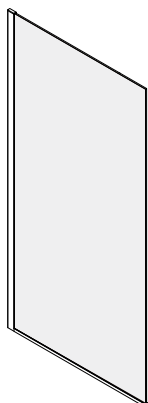
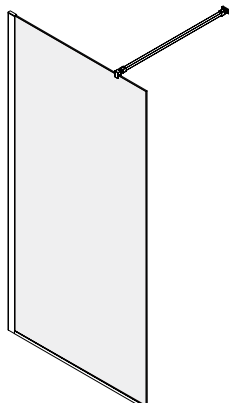


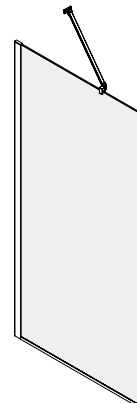
# PREMIER 8 GLASS SCREENS

**A**

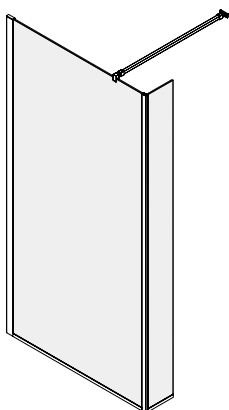
P7~P9  
SP70C/SP80C/SP90C

**B**

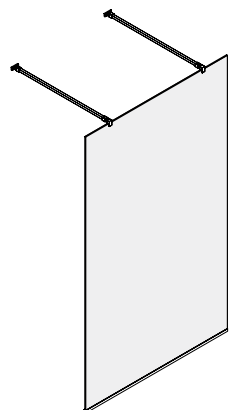
P9~P11  
SP10C/SP11C/SP12C

**C**

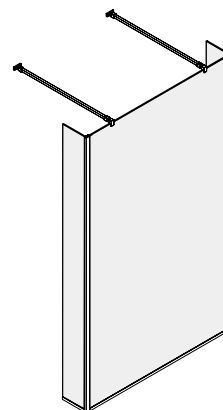
P11~P13  
SP10C/SP11C/SP12C

**D**

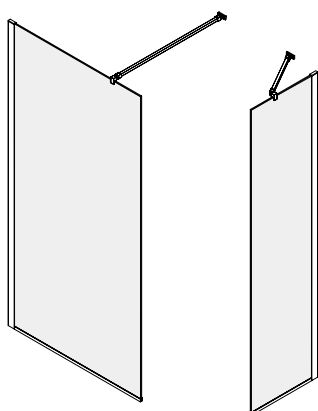
P13~P15  
SP10C/SP11C/SP12C+SP02C/  
SP03C

**E**

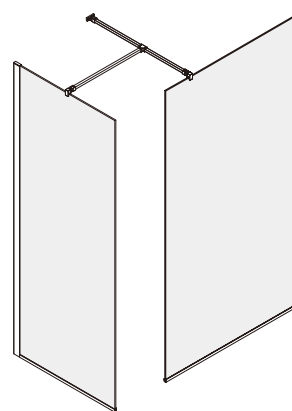
P16~P18  
SP10C/SP11C/SP12C+SPAB

**F**

P18~P21  
SP10C/SP11C/SP12C+SPAB  
+SP02C/SP03C

**G**

P22~P25  
SP10C/SP11C/SP12C+SP70C/SP80C/SP90C+SPAB

**H**

P25~P31  
SP10C/SP11C/SP12C+SP70C/SP80C/SP90C+SPTB

**CUSTOMER CARELINE 01460 256080**

# PREMIER 8 GLASS SCREENS

*Please read these instructions carefully and keep for future reference.  
Incorrect fitting will invalidate the guarantee.*

## SAFETY

- Handle glass with great care. Although the glass is very tough, sharp impacts can damage both the glass and metal frame.
- Make sure there are no hidden pipes or cables hidden in the wall where you intend to drill.
- Wear safety goggles, shoes and appropriate clothing.

## BEFORE INSTALLATION

- Check that the shower tray is level in all directions. The enclosure will not sit correctly on an uneven surface. If uneven, the wall channels may not fit and the doors may not shut correctly.
- The enclosure should be fitted on tiled walls which are sealed with waterproof grout.
- There must be a good silicone seal between the rim of the shower tray and the wall.
- The shower tray and the enclosure must match in size. Attempting to fit the incorrect size of enclosure to the shower tray will result in water leaks.
- Always check very carefully that components are vertical.
- To avoid damage, use the opened out packaging to build the enclosure on.

### **Equipment needed:**

Drill, 6.5mm Masonry Bit, 3.2mm & 6mm Metal Bits (general), Crosshead Screwdriver, Spirit Level, Pencil, Tape Measure, Masking Tape, Silicone Sealant.

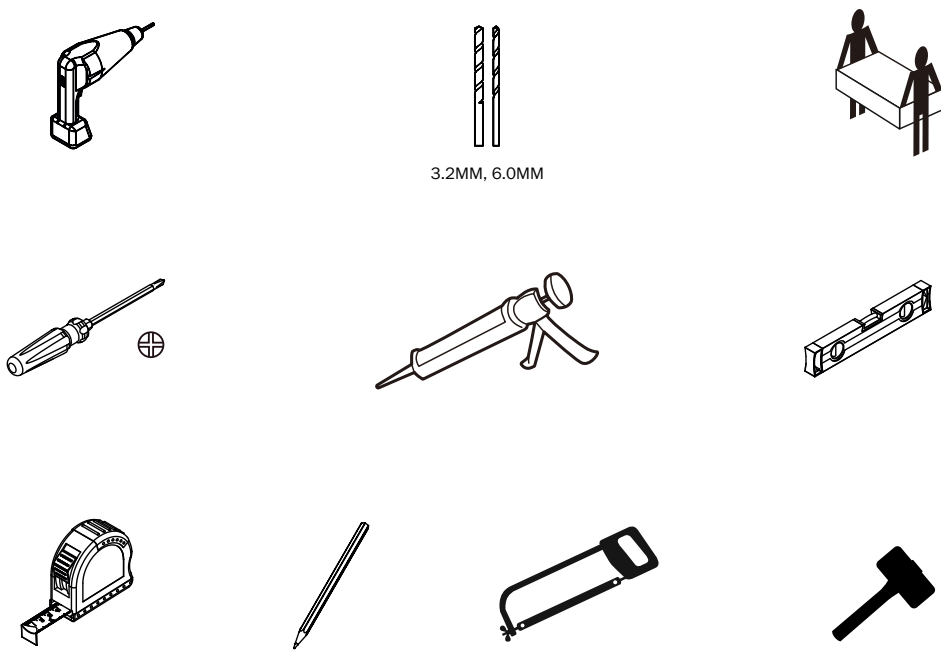
**Note:** The screws and wall plugs supplied are for masonry walls. For lightweight walls i.e. stud partition, plasterboard etc, use the correct type of fixings.

**CUSTOMER CARELINE 01460 256080**

Included



Additional tools

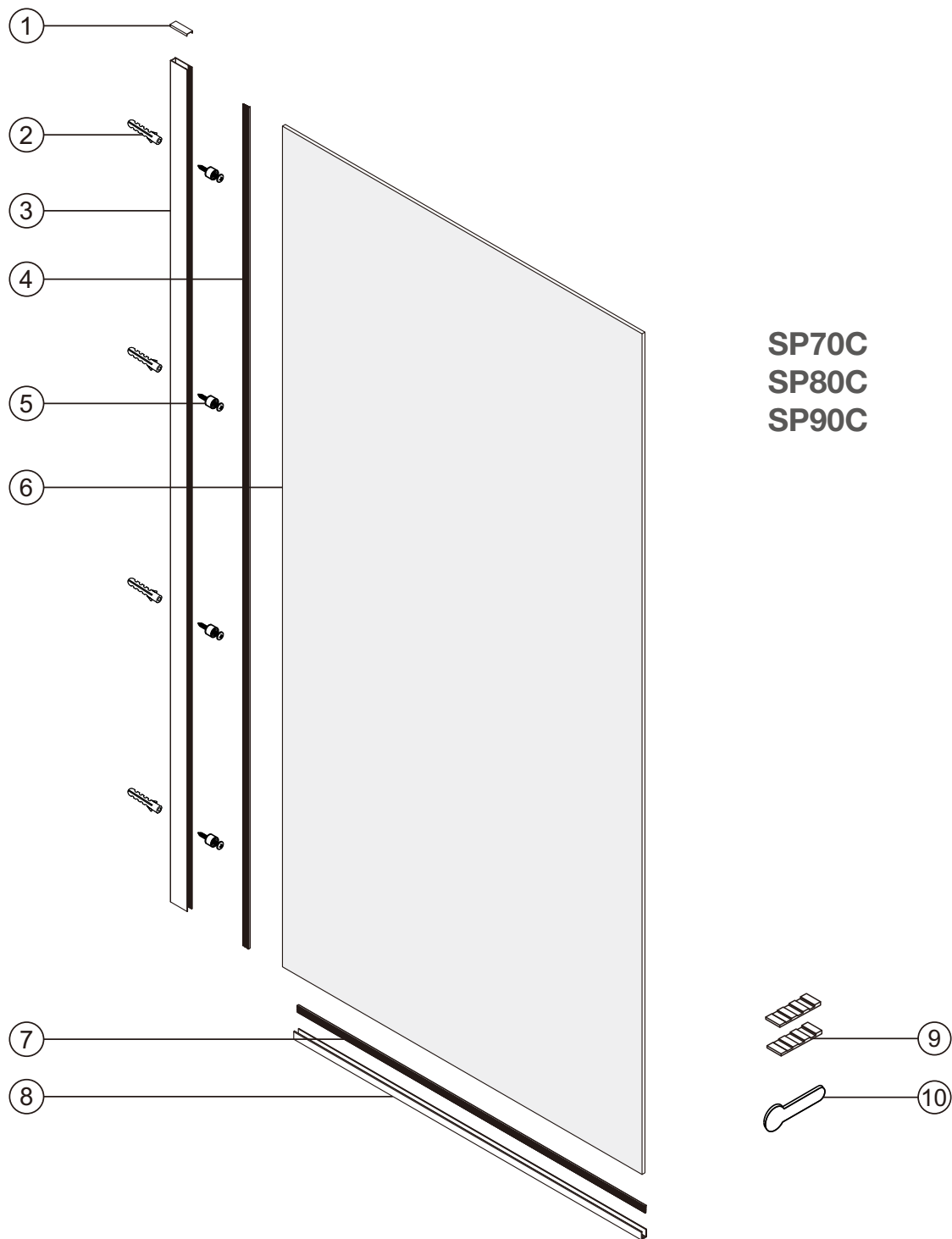


**SPAB**

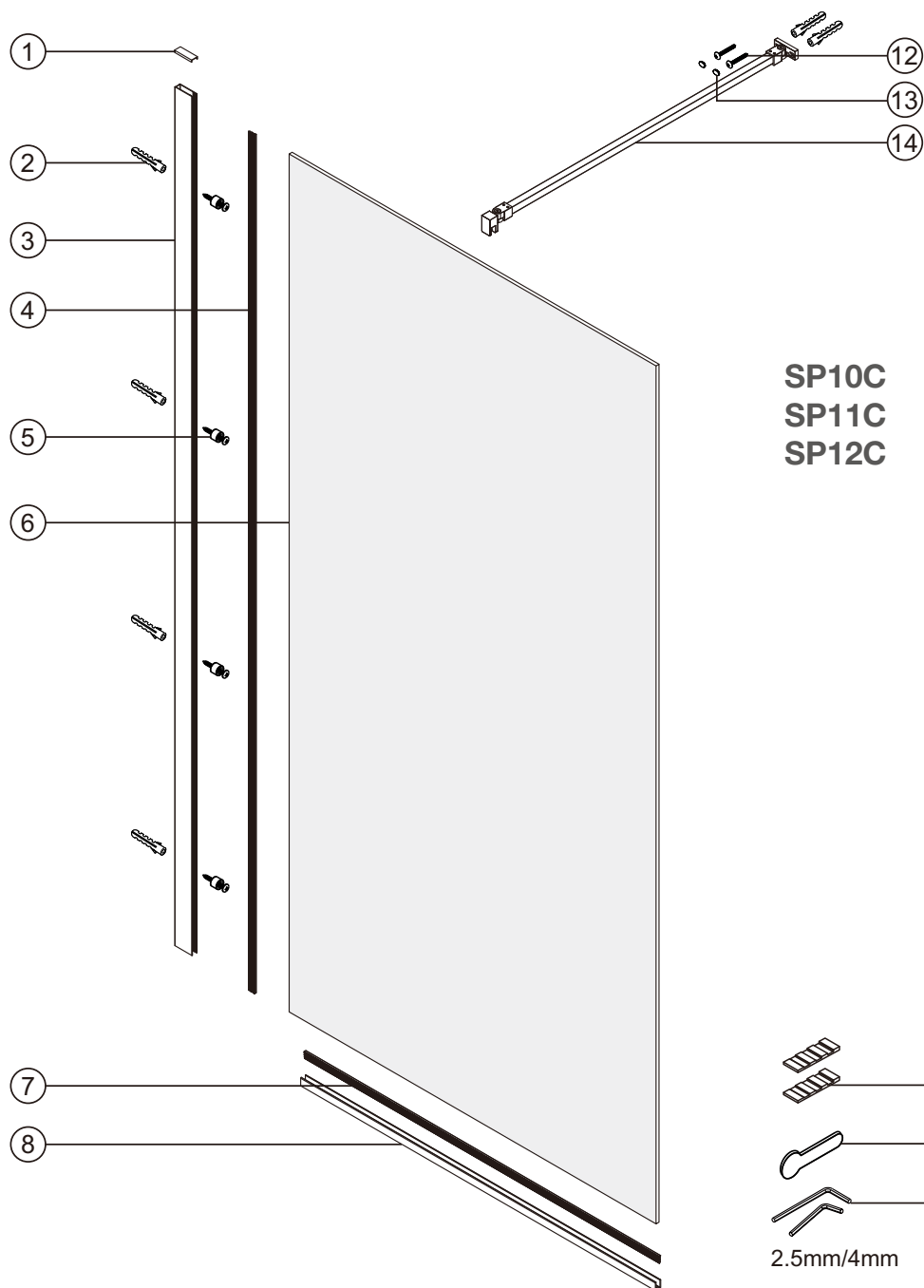
Diagram illustrating the assembly of the SPAB component. The main assembly consists of a long metal bracket (x1) and a connector (x1). The assembly is secured by two screws (x2) and two ST4x40 screws (x2). The assembly is also secured by two 2.5mm/4mm L-shaped corner brackets (x2).

**SPTB**

Diagram illustrating the assembly of the SPTB component. The main assembly consists of a long metal bracket (x1) and a connector (x1). The assembly is secured by two 2.5mm/4mm L-shaped corner brackets (x2).



NO	Qty	Description	Code	NO	Qty	Description	Code
1	1	Cover Cap	50604	6	1	Glass Screen	21200
2	4	Wall Plug	60664	7	1	Bottom gasket	40469
3	1	Wall Channel	11510	8	1	Bottom profile	11511
4	1	Squeeze gasket	40468	9	2	Glass Wedge	50605
5	4	ST4X40 Screw for vertical profile to wall	60665	10	1	Squeeze gasket tool	50606



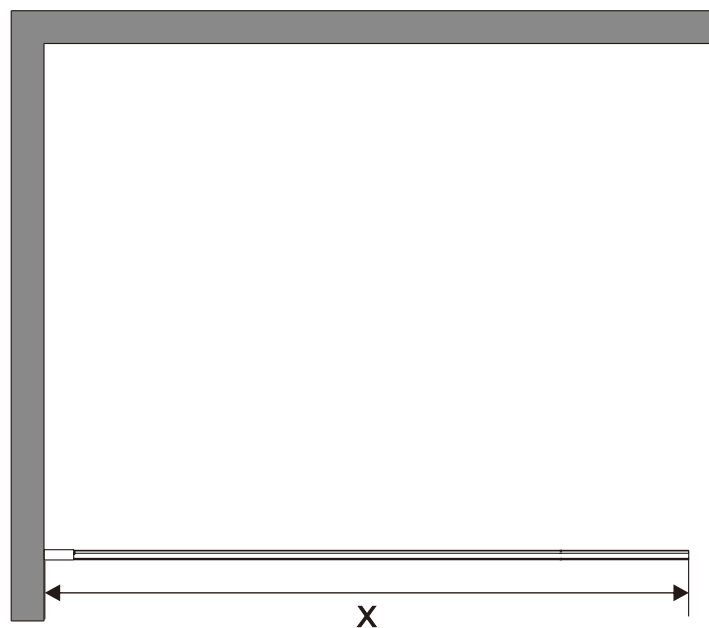
NO	Qty	Description	Code	NO	Qty	Description	Code
1	1	Cover Cap	50604	9	2	Glass Wedge	50605
2	6	Wall Plug	60664	10	1	Squeeze gasket tool	50606
3	1	Wall Channel	11510	11-1	1	Allen key 2.5mm	60667
4	1	Squeeze gasket	40468	11-2	1	Allen key 4mm	60668
5	4	ST4X40 Screw for vertical profile to wall	60665	12	2	ST4X40 Screw for tie bar to wall	60666
6	1	Glass Screen	21200	13	1	Screw cap	50607
7	1	Bottom gasket	40469	14	1	Bracing bar	SPAB
8	1	Bottom profile	11511				



**SP02C**  
**SP03C**

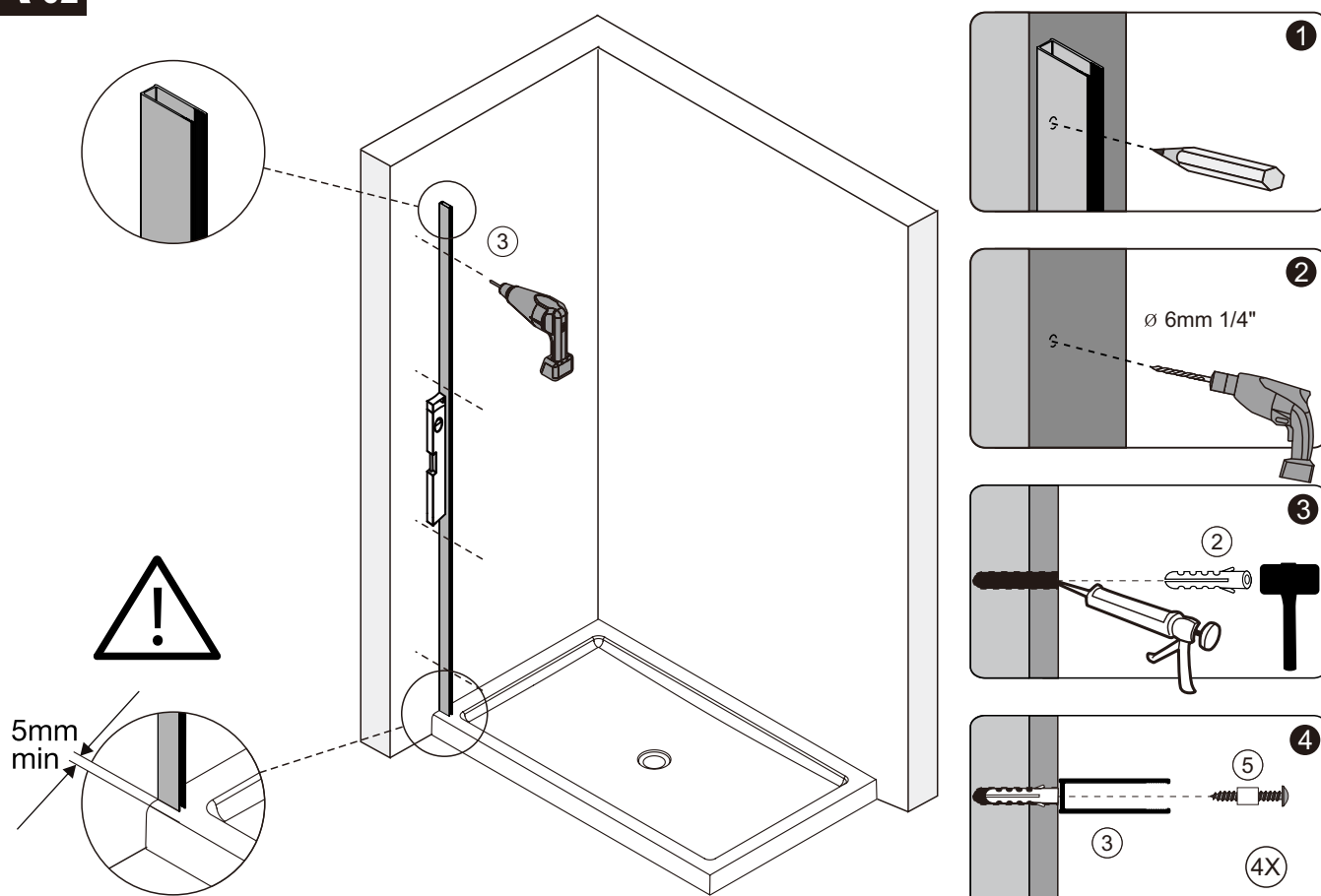
NO	Qty	Description	Code
SP1	1	Glass Screen	21201
SP2	2	Squeeze gasket	40476
SP3	1	Corner profile	11512
SP4	1	Bottom gasket	40469
SP5	1	Bottom profile	11511
9	2	Glass Wedge	50605
10	1	Squeeze gasket tool	50606

**A<sub>01</sub>**

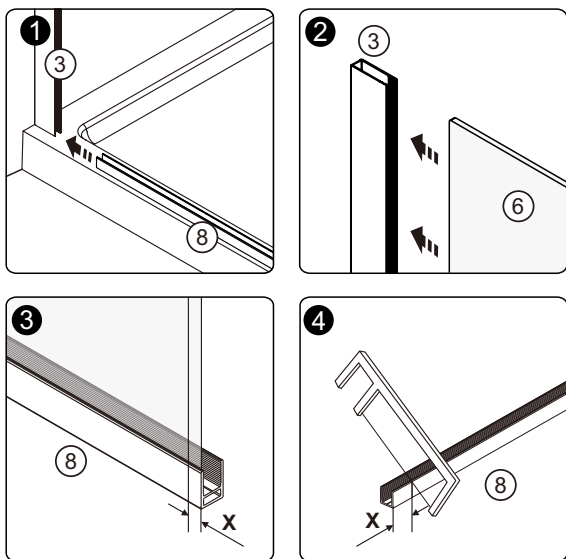


PRODUCT CODE	SCREEN SIZE IN MM	OVERALL DIMENSIONS IN MM / X
SP70C	700	680 - 700
SP80C	800	780 - 800
SP90C	900	880 - 900

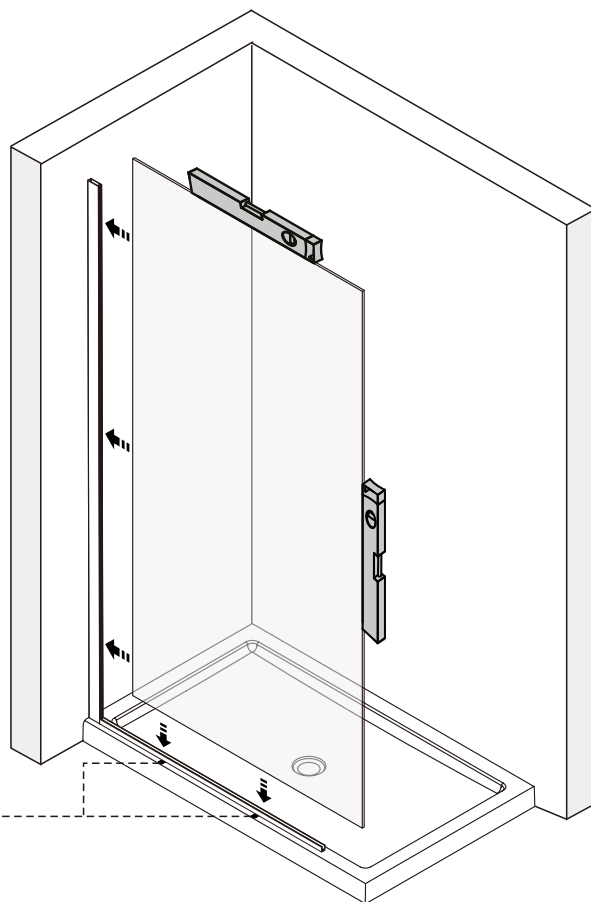
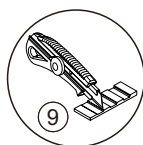
**A<sub>02</sub>**



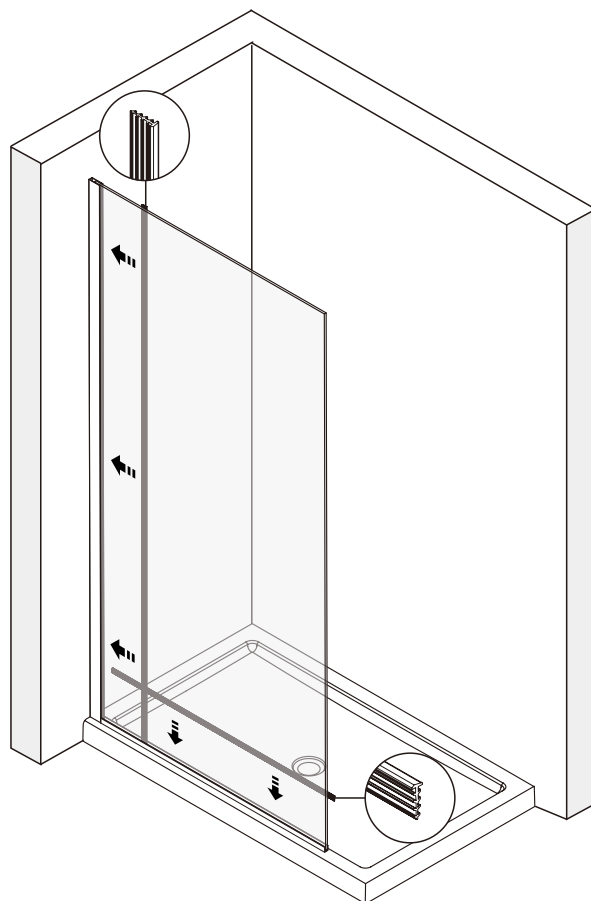
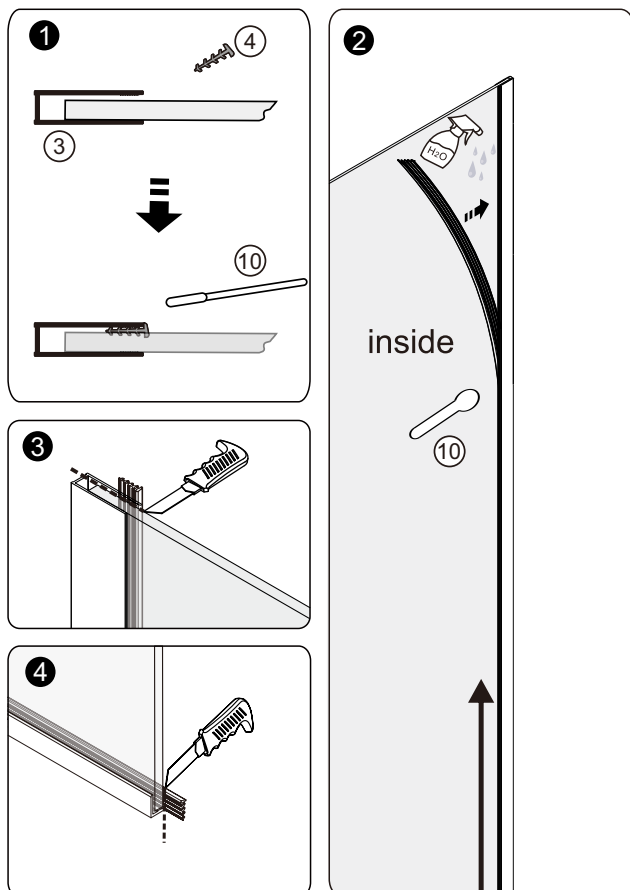
## A 03



Use the plastic wedge to level the glass if required. Place the glass under the bottom profile, and cut off the excess

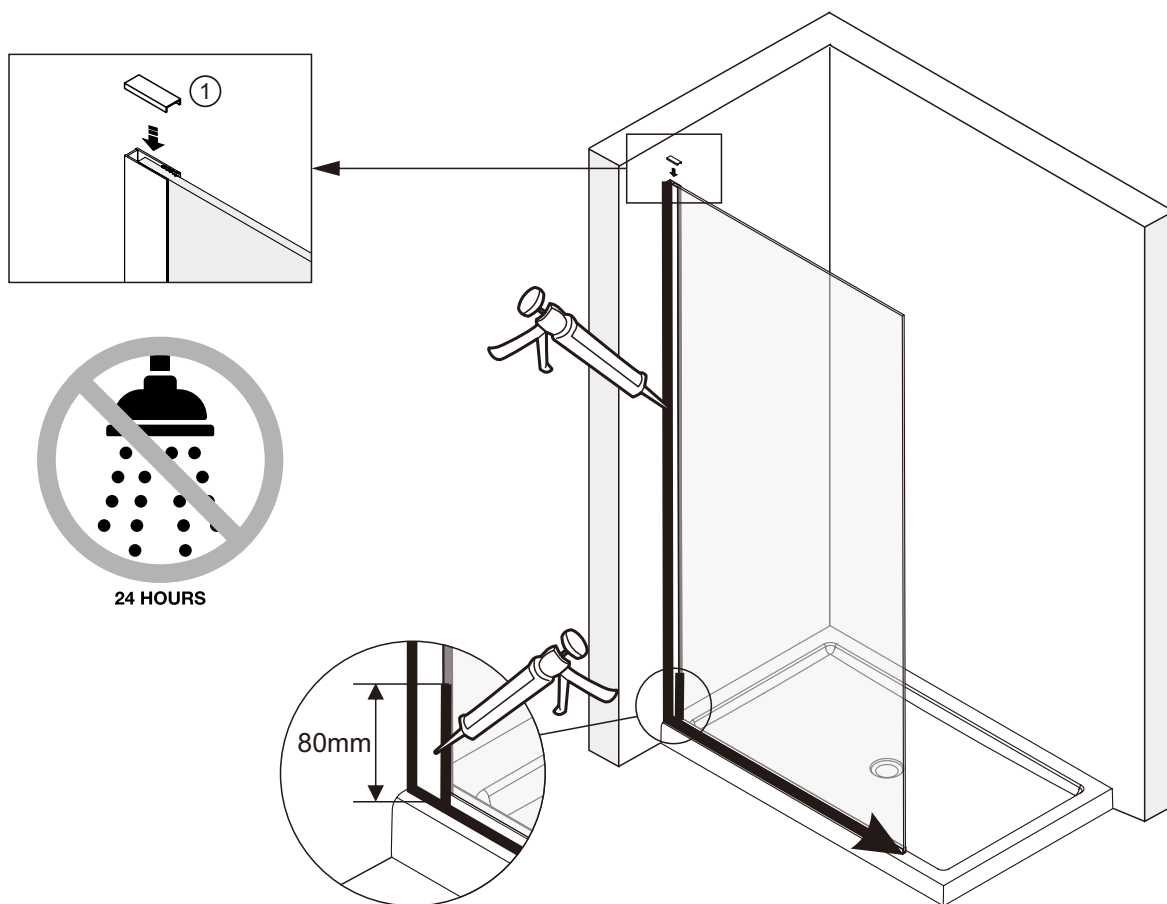


## A 04

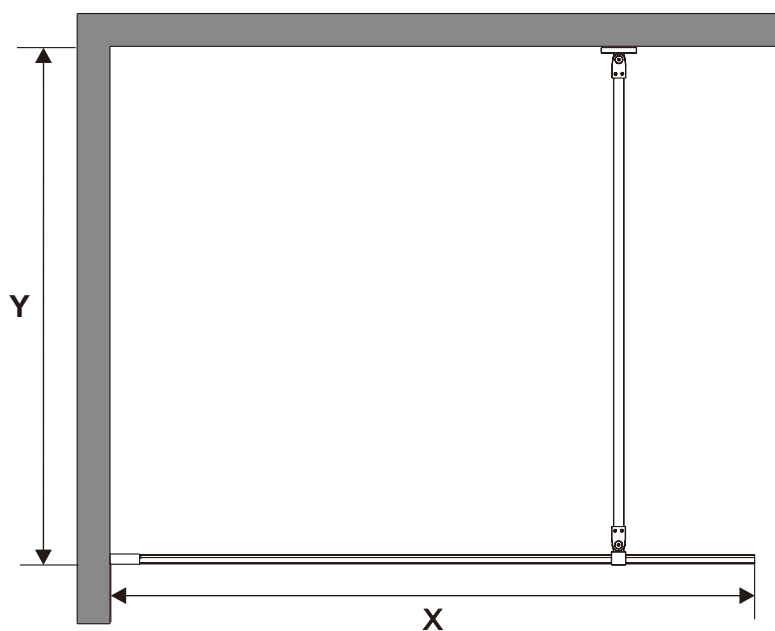




## A 05



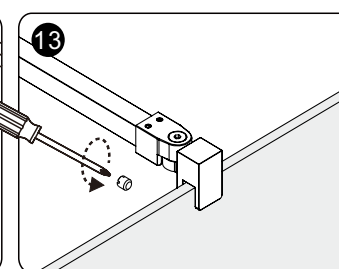
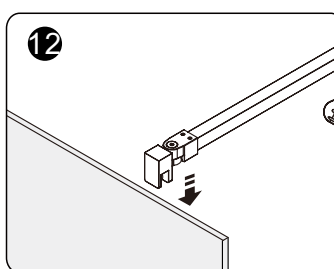
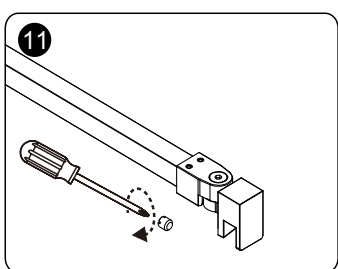
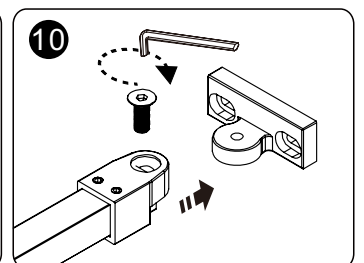
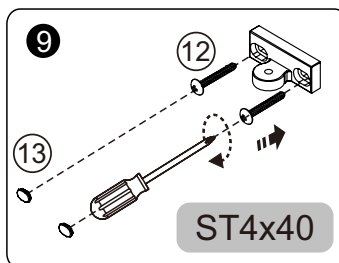
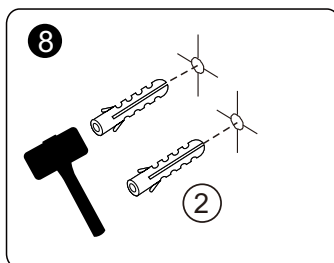
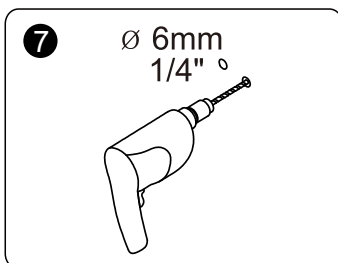
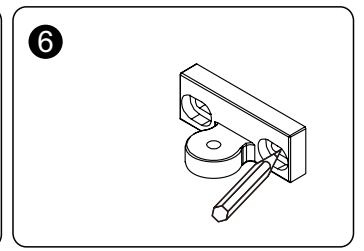
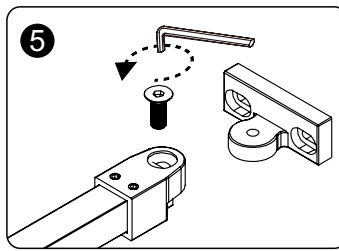
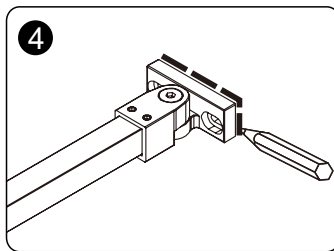
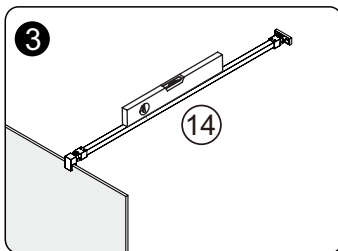
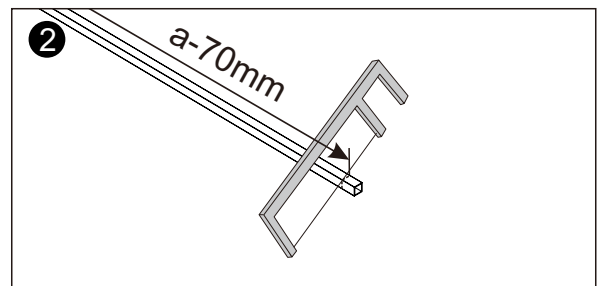
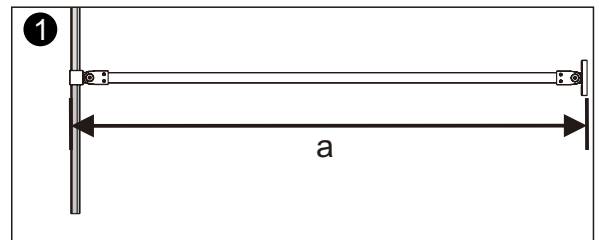
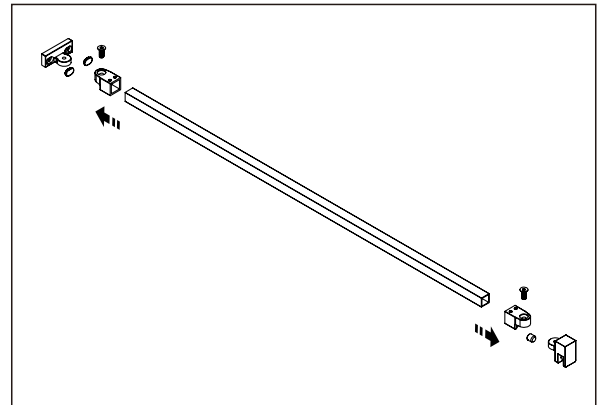
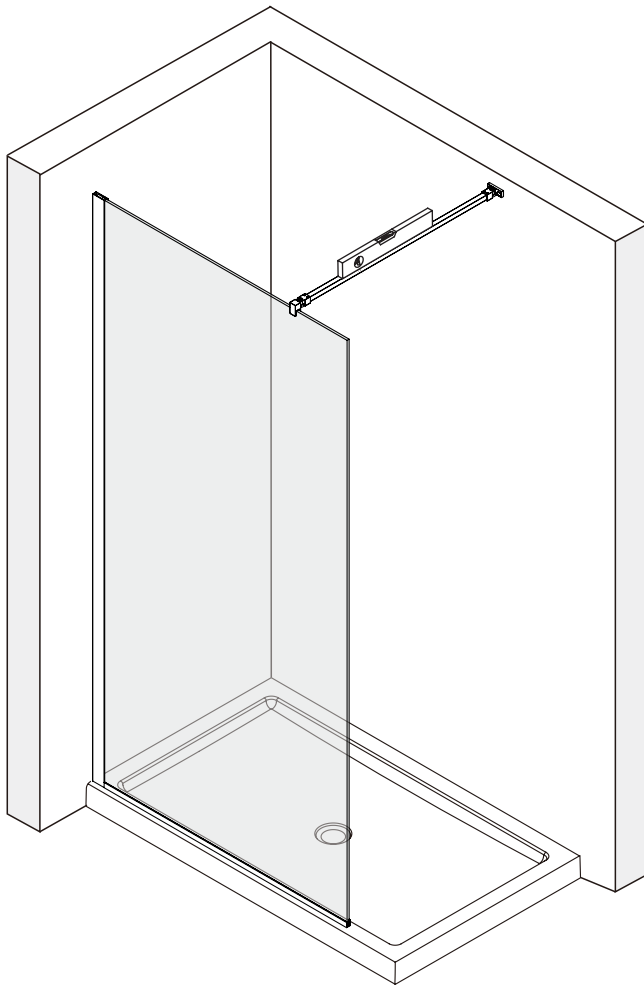
## B 01



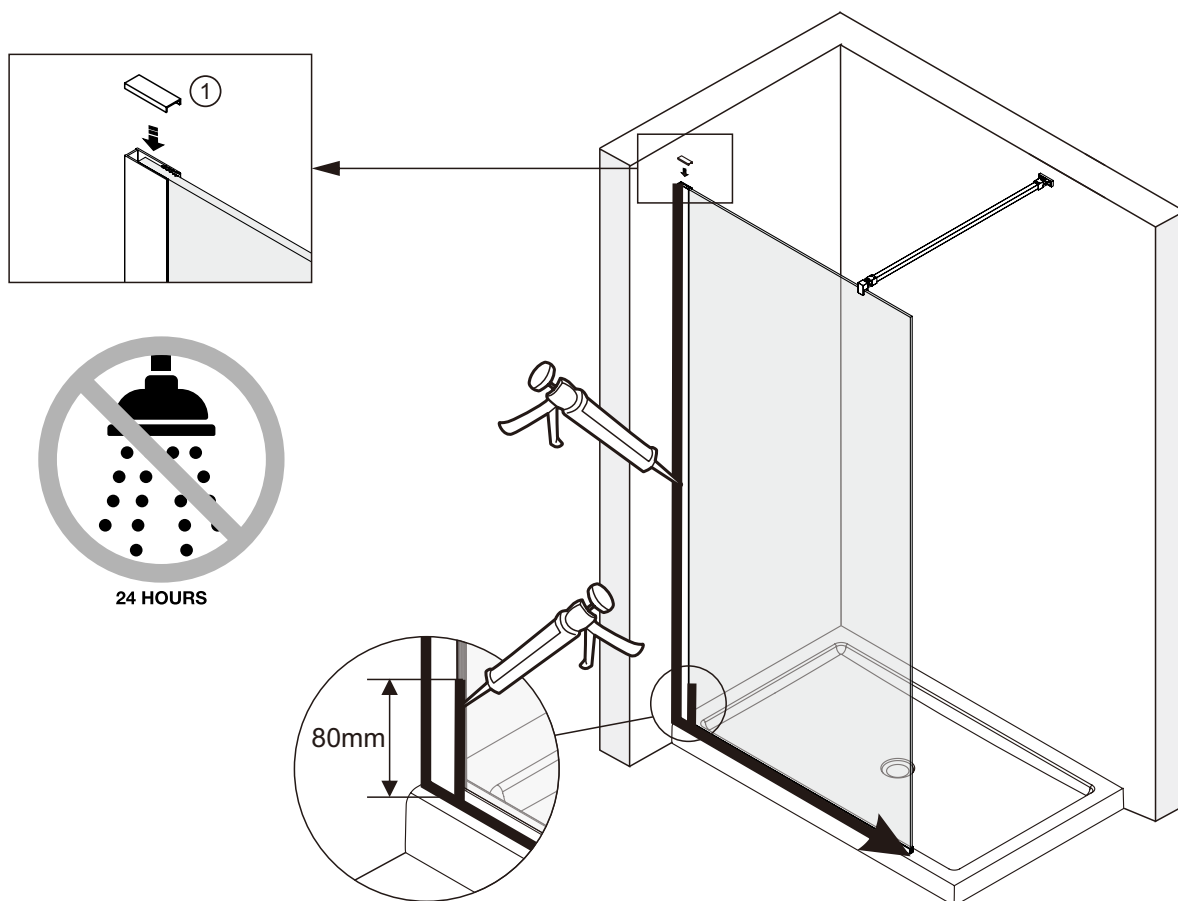
PRODUCT CODE	SCREEN SIZE IN MM	OVERALL DIMENSIONS IN MM / X	OVERALL DIMENSIONS IN MM / Y
SP10C	1000	980 - 1000	600 - 1200
SP11C	1100	1080 - 1100	600 - 1200
SP12C	1200	1180 - 1200	600 - 1200

**B 02**

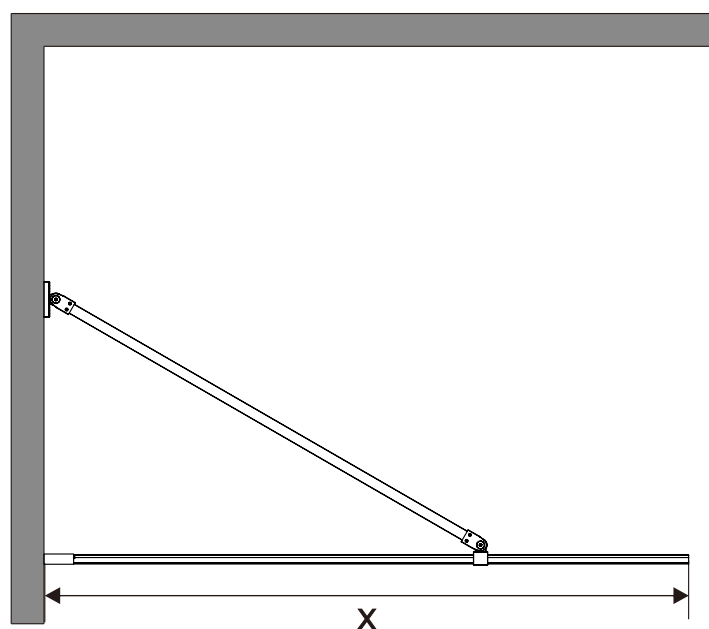
Same step as step A02 to A04

**B 03**

## B 04



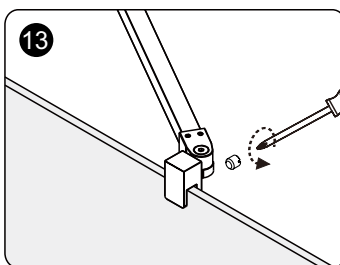
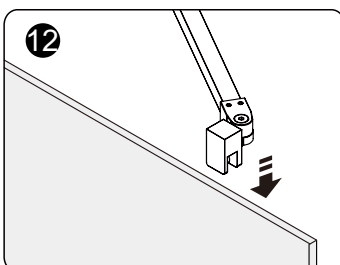
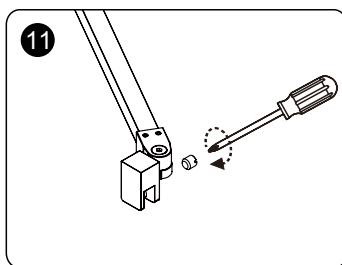
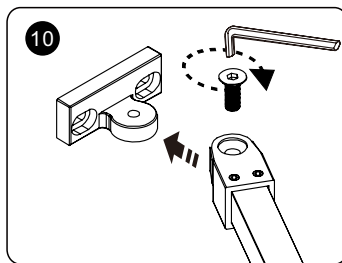
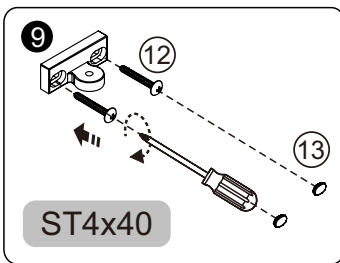
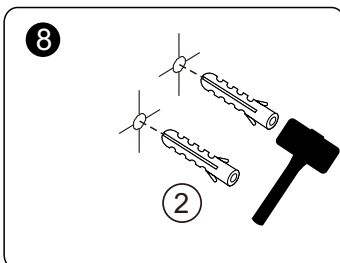
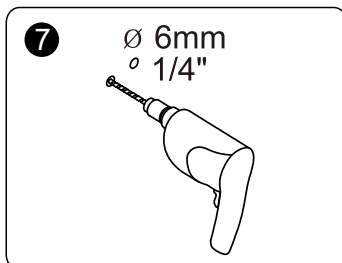
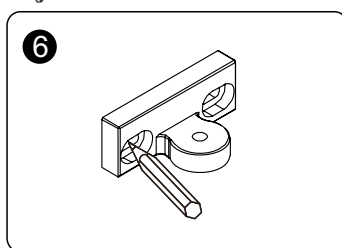
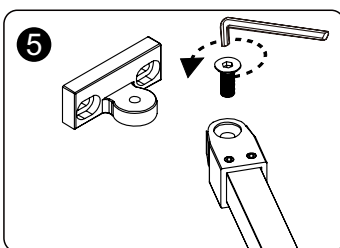
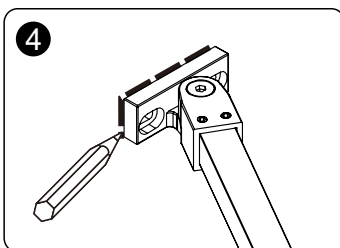
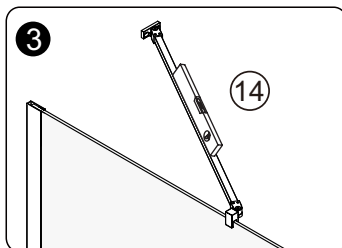
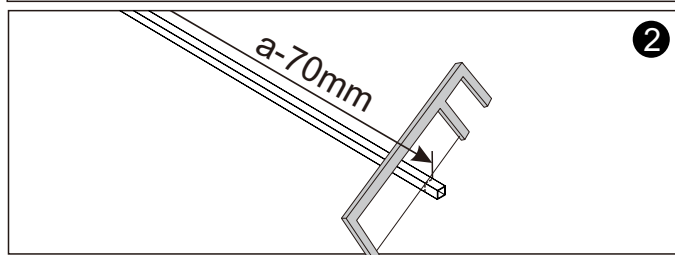
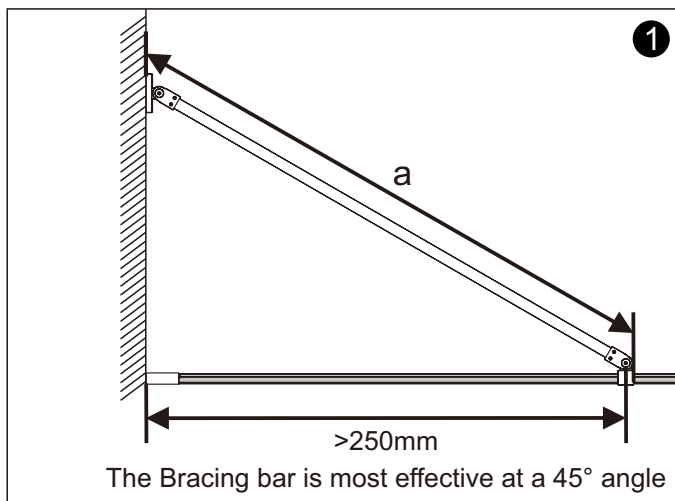
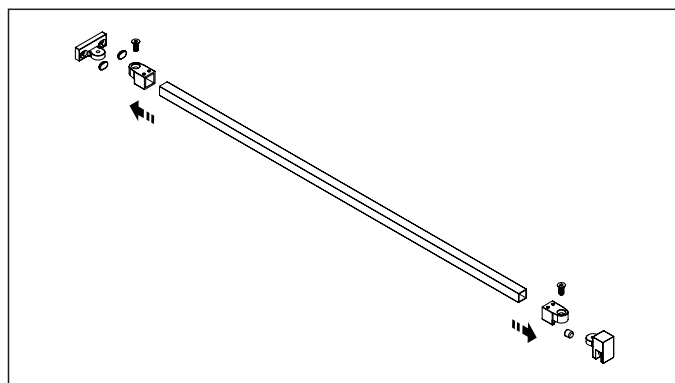
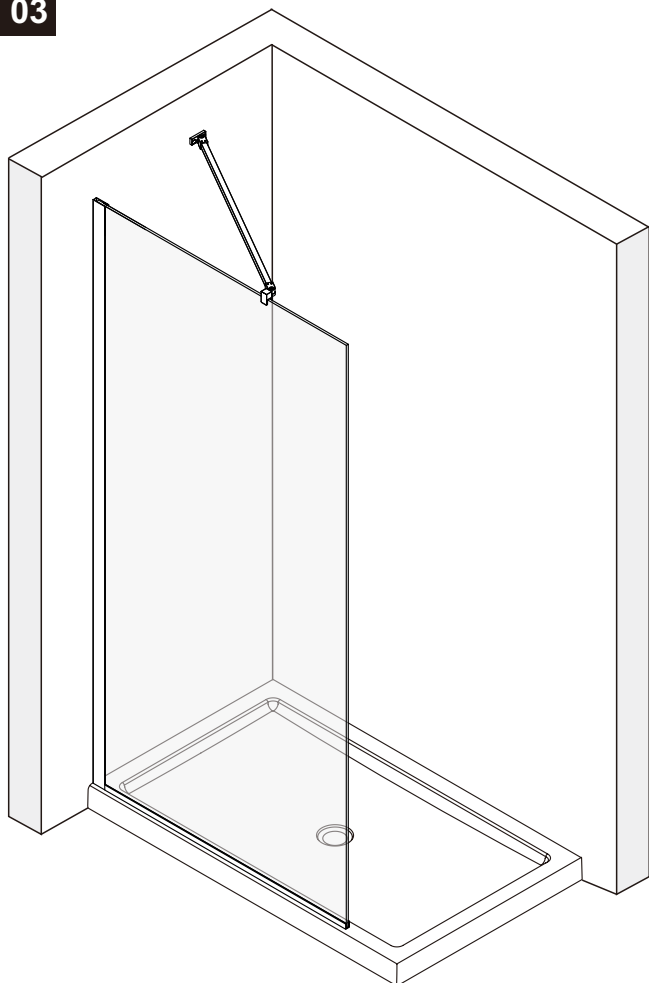
## C 01



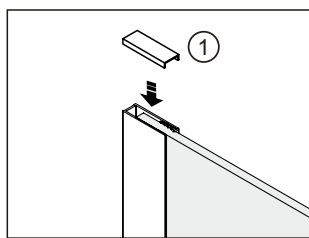
PRODUCT CODE	SCREEN SIZE IN MM	OVERALL DIMENSIONS IN MM / X
SP10C	1000	980 - 1000
SP11C	1100	1080 - 1100
SP12C	1200	1180 - 1200

**C 02**

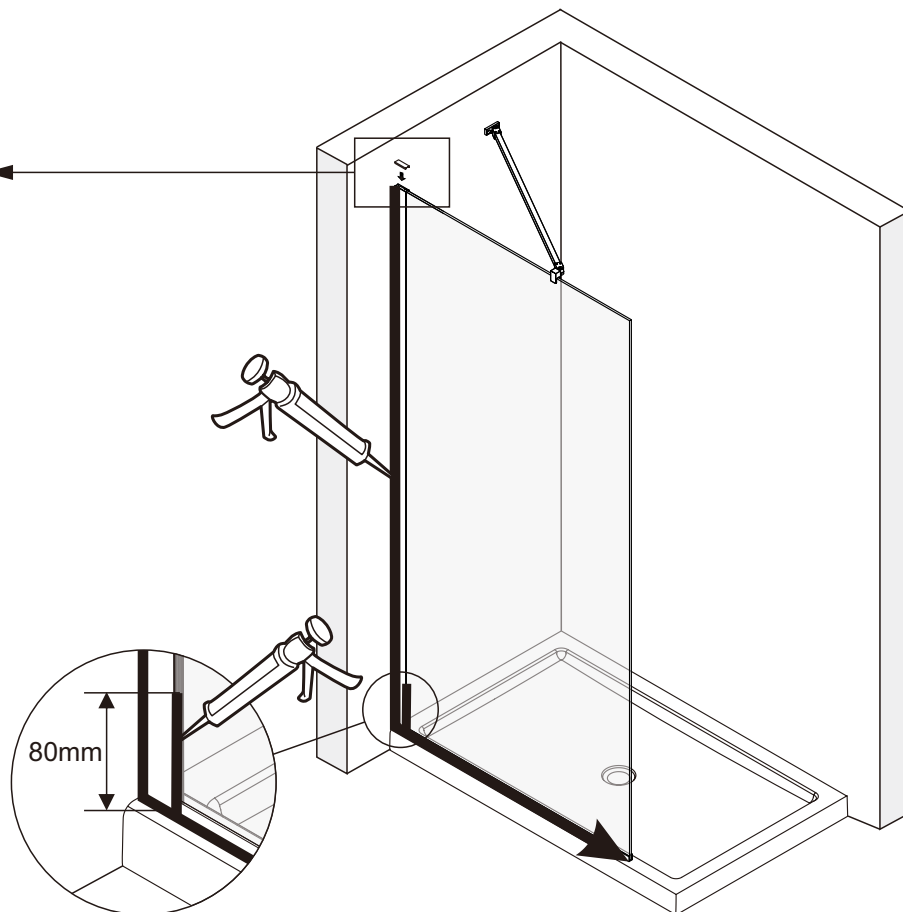
Same step as step A02 to A04

**C 03**

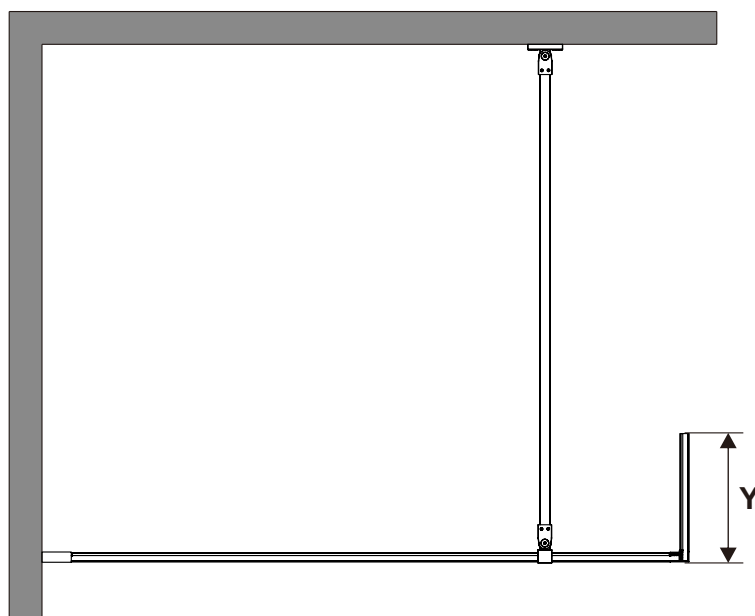
## C 04



24 HOURS



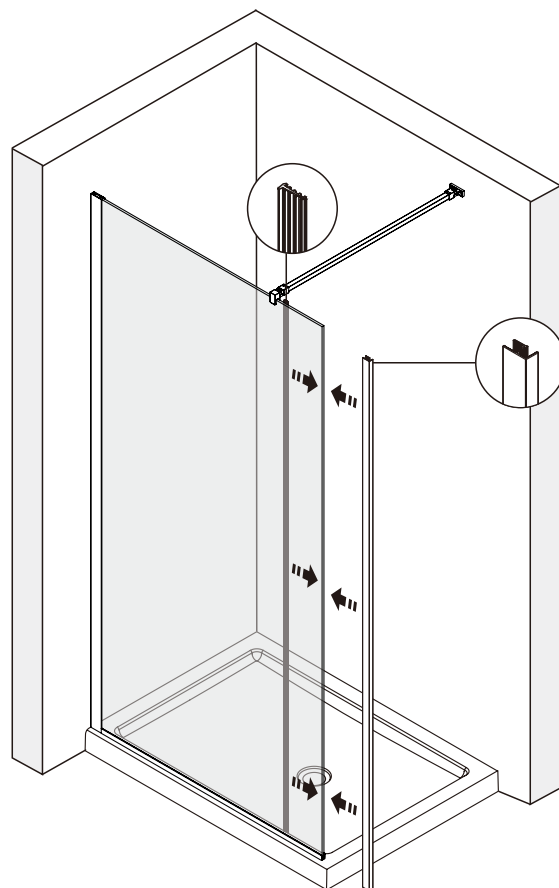
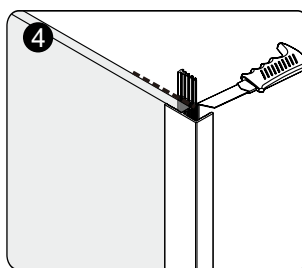
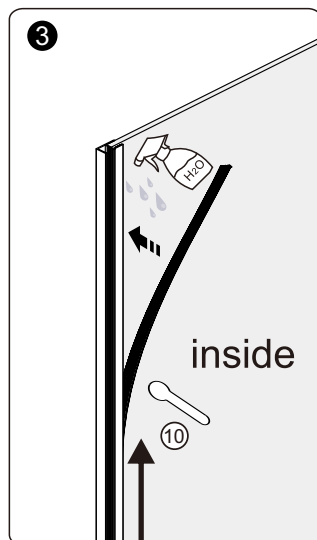
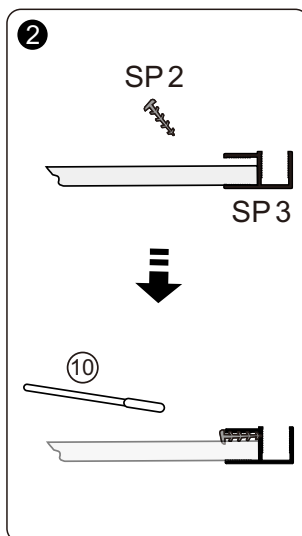
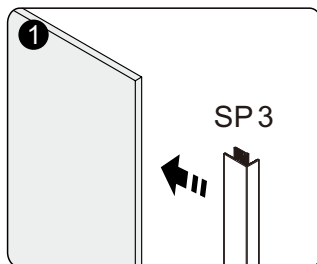
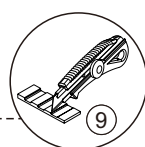
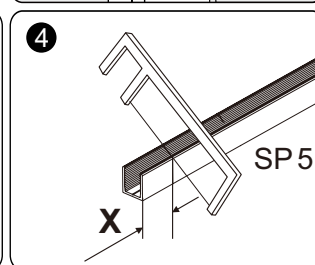
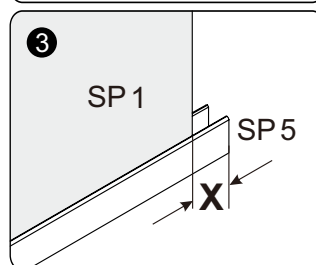
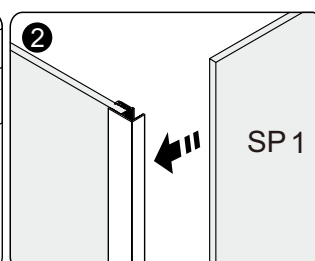
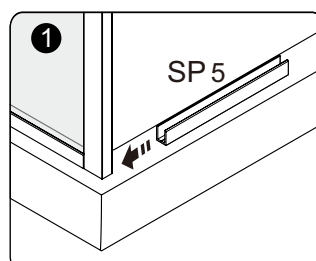
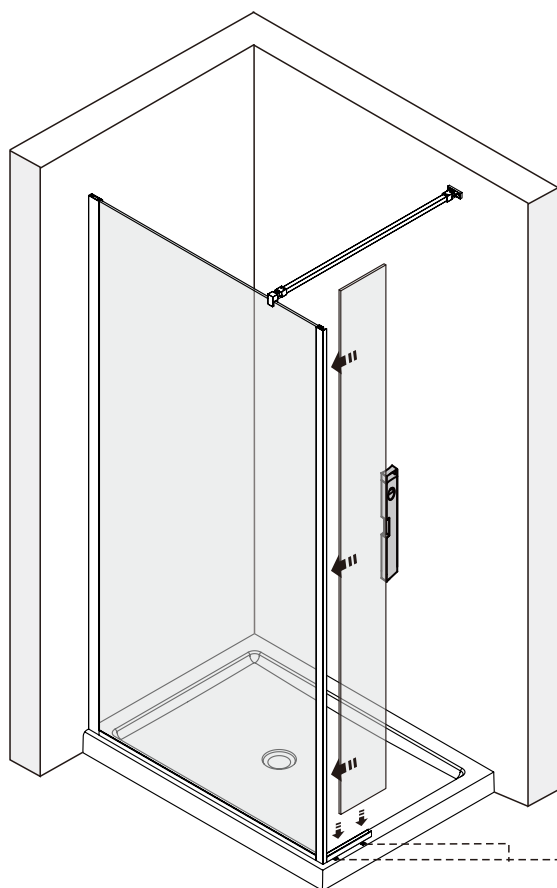
## D 01



PRODUCT CODE	SCREEN SIZE IN MM	OVERALL DIMENSIONS IN MM / Y
SP02C	200	200
SP03C	300	300

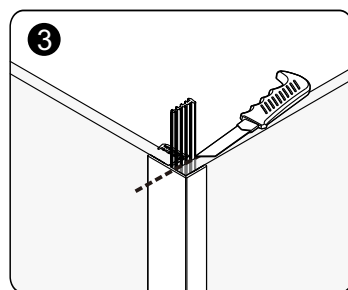
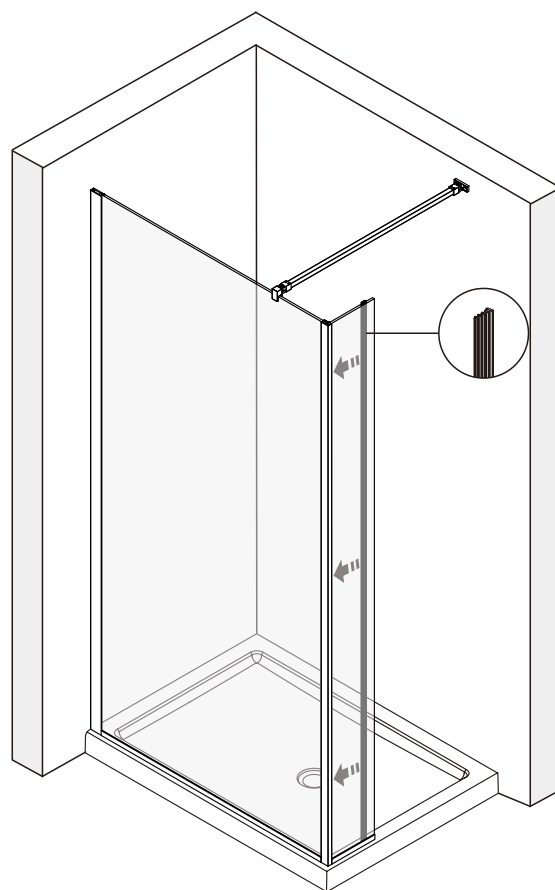
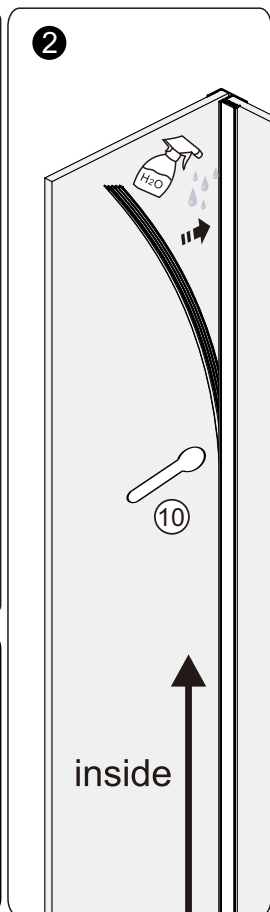
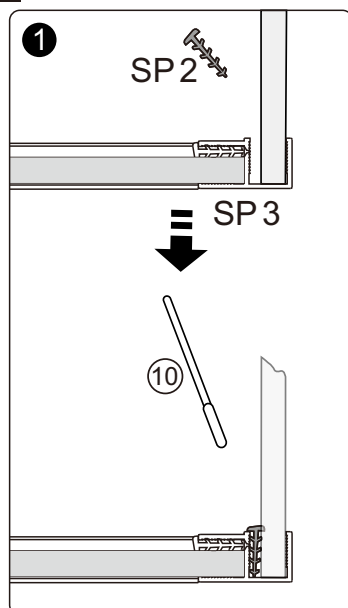
**D 02**

Same step as step A02 to A04 and B3

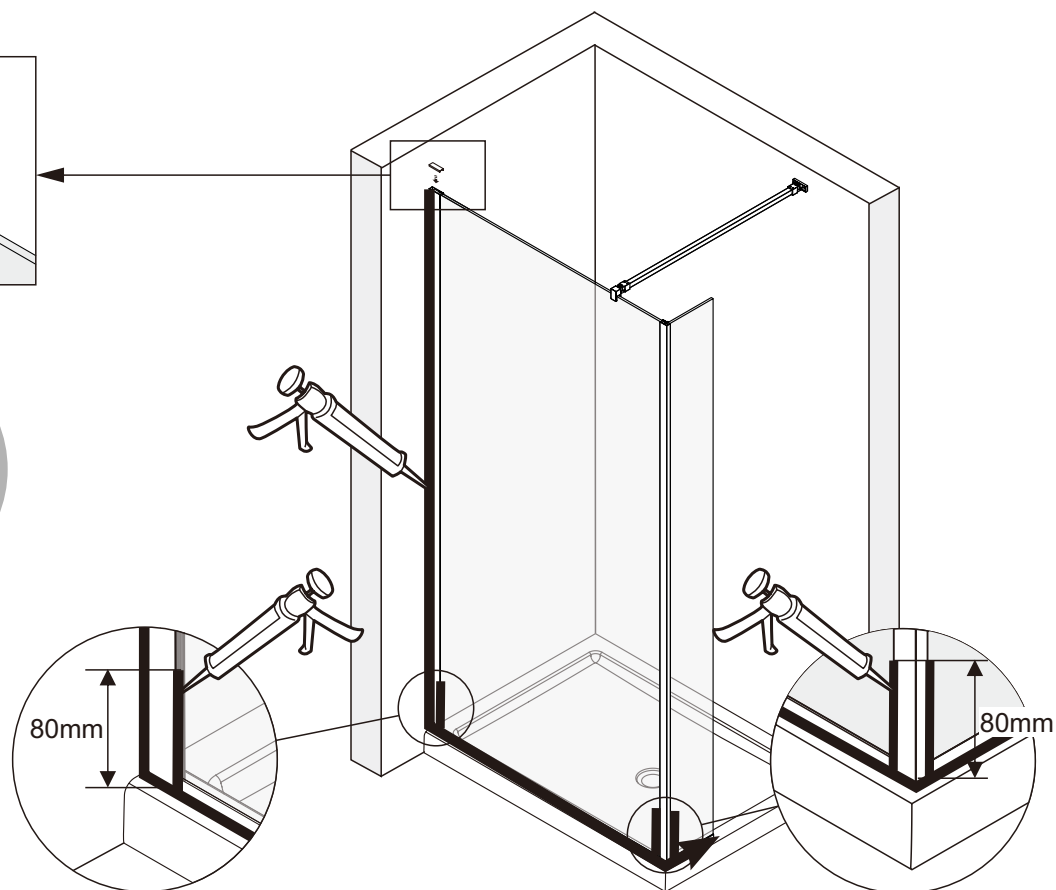
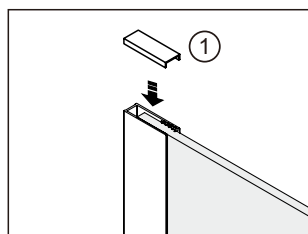
**D 03****D 04**

Use the plastic wedge to level the glass if required. Place the glass under the bottom profile, and cut off the excess

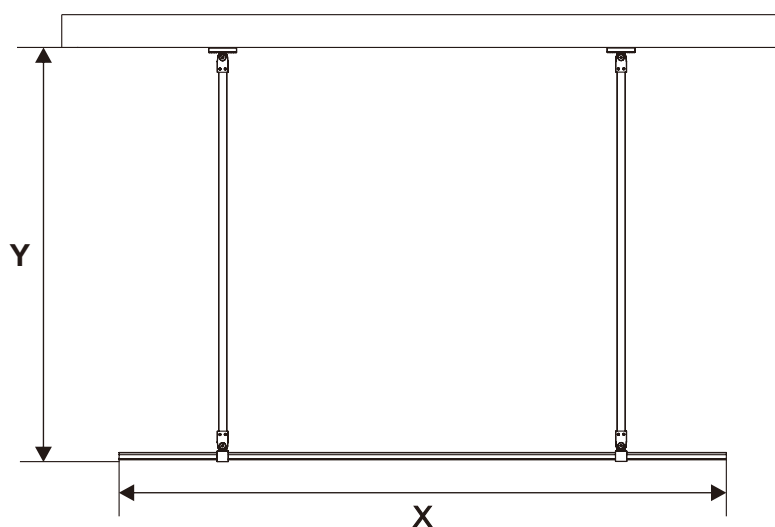
# D 05



# D 06

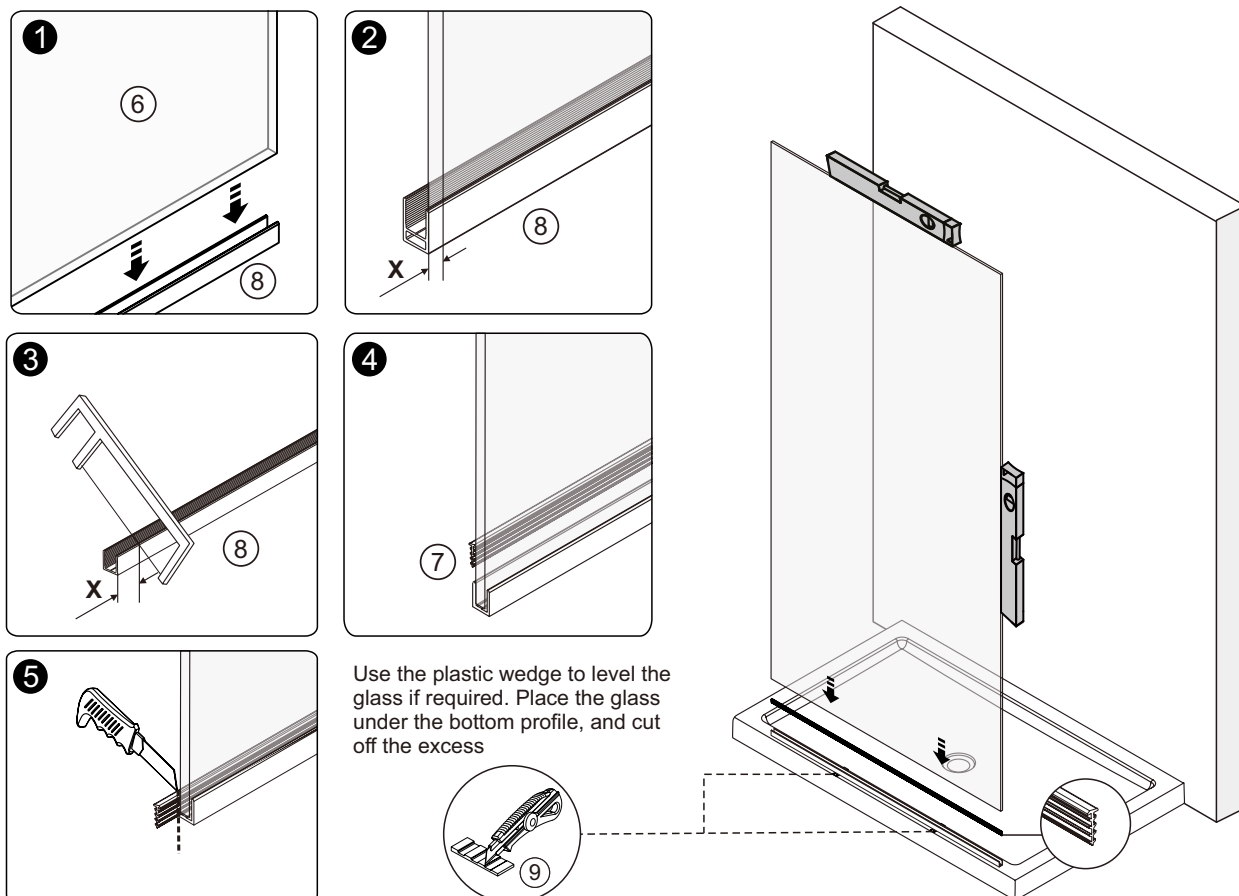


# E 01

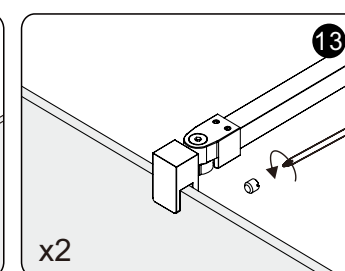
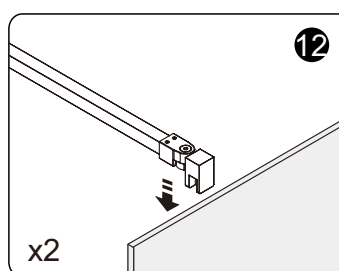
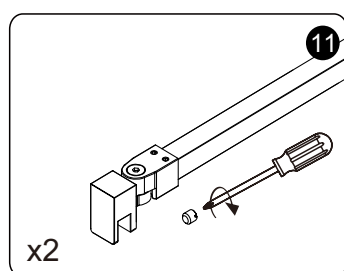
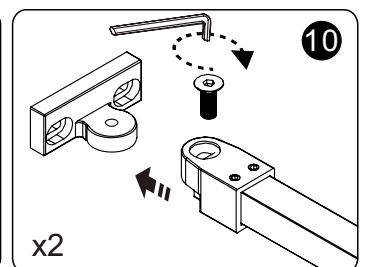
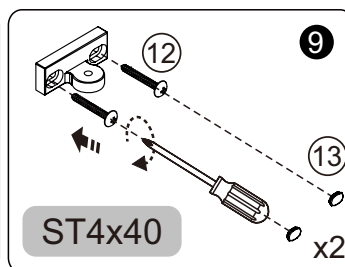
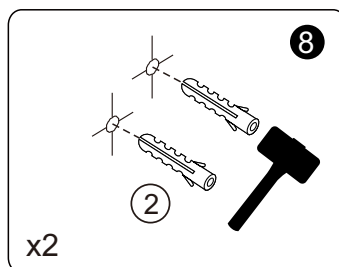
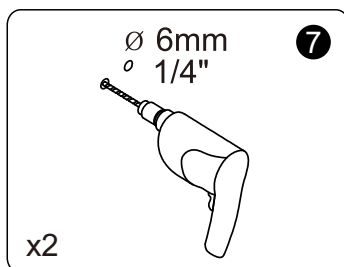
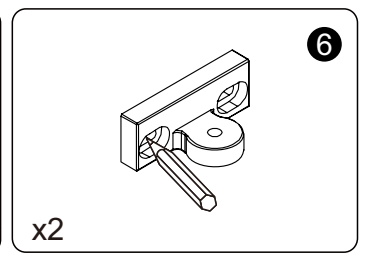
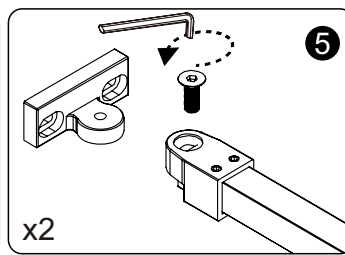
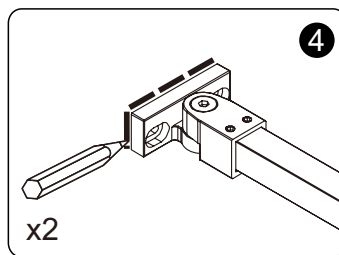
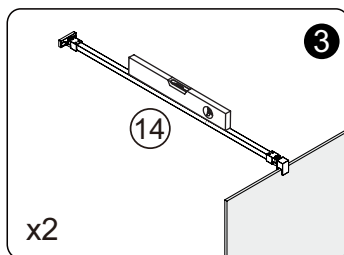
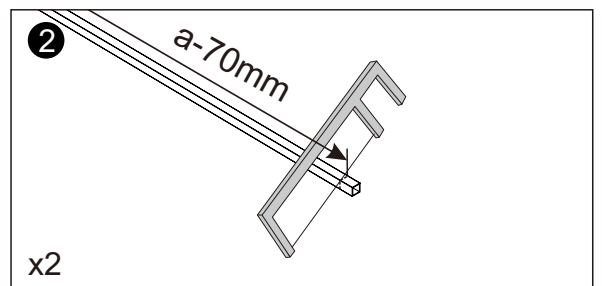
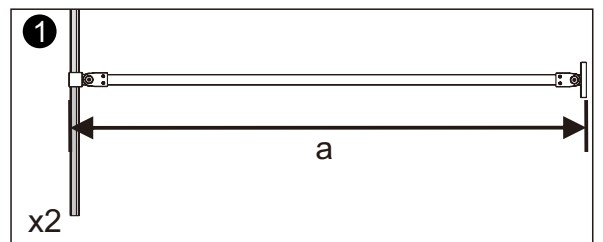
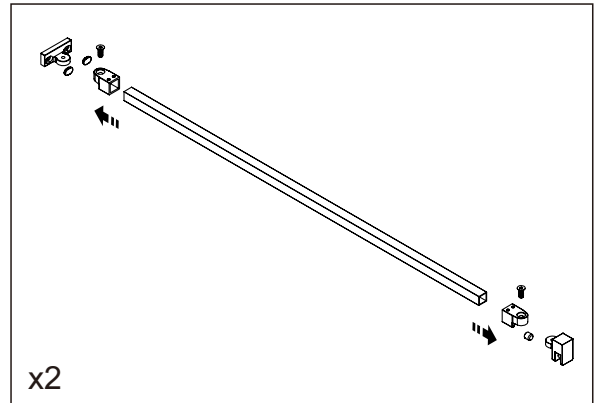
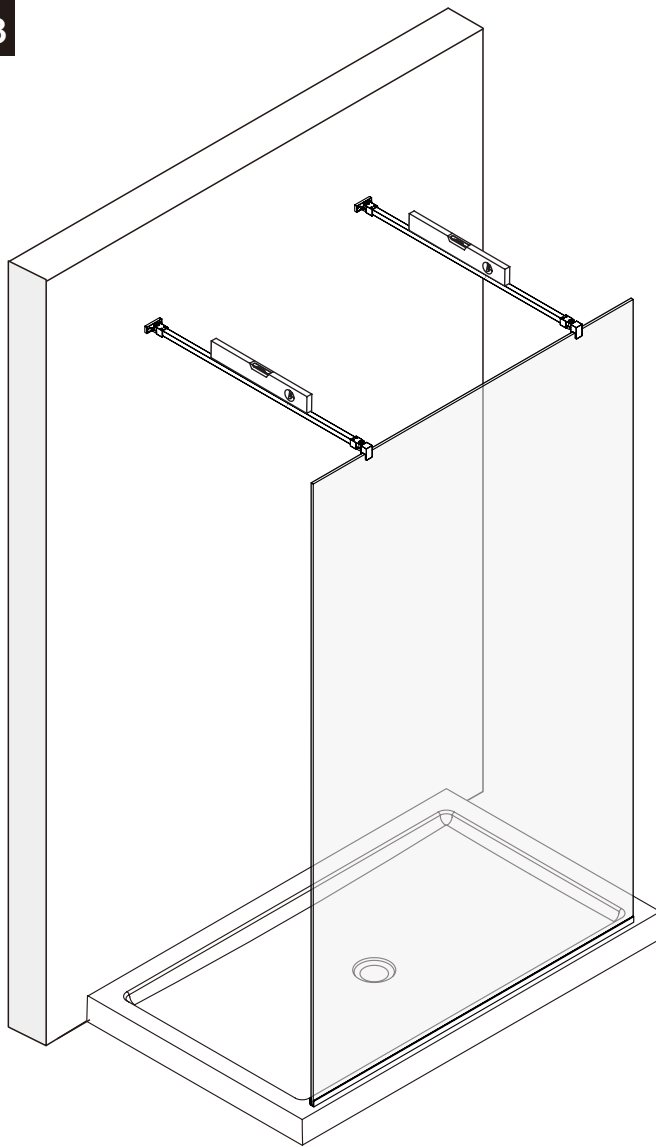


PRODUCT CODE	SCREEN SIZE IN MM	OVERALL DIMENSIONS IN MM / X	OVERALL DIMENSIONS IN MM / Y
SP10C+SPAB	967	967	600 - 1200
SP11C+SPAB	1067	1067	600 - 1200
SP12C+SPAB	1167	1167	600 - 1200

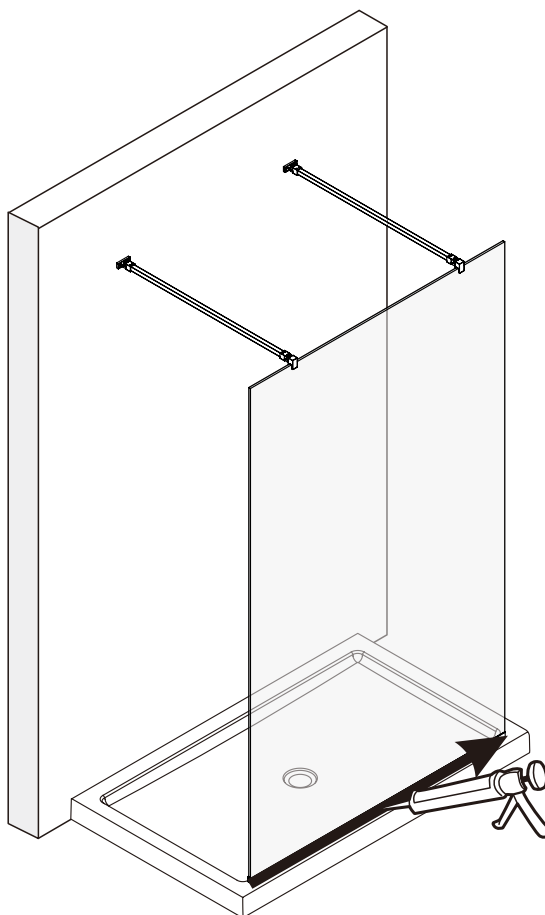
# E 02



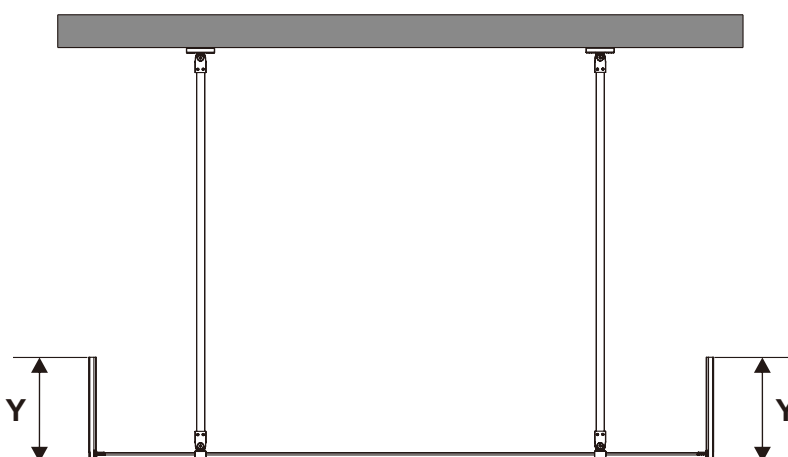




# E 04



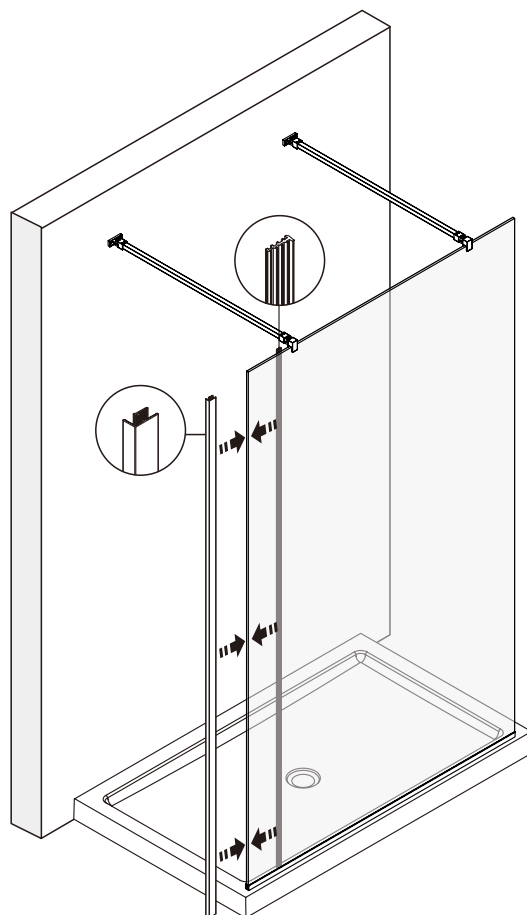
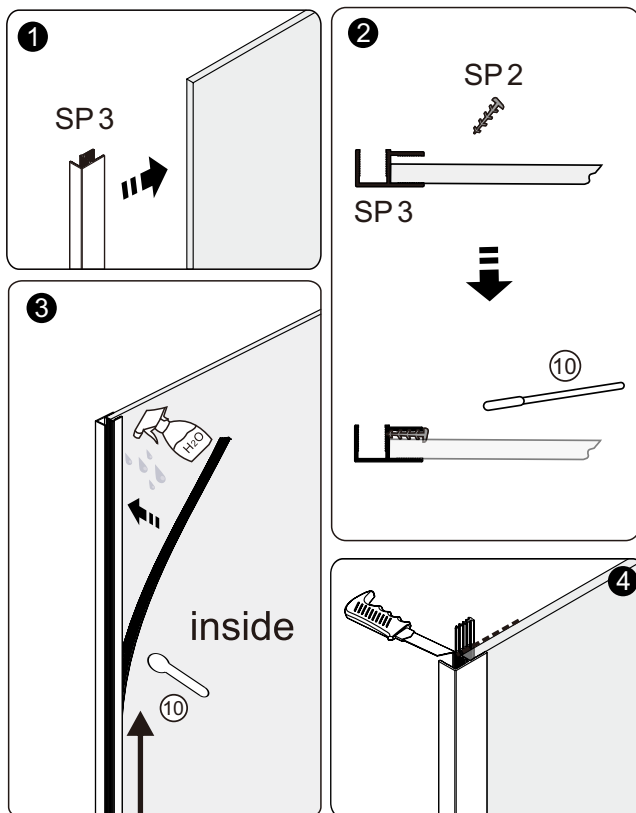
# F 01



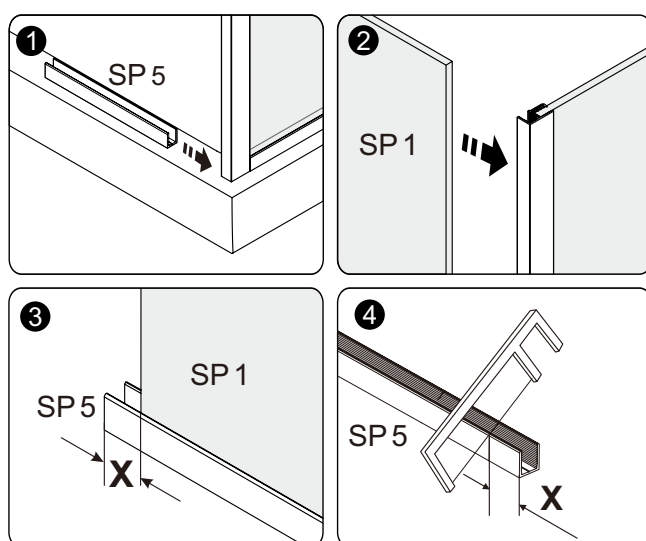
PRODUCT CODE	SCREEN SIZE IN MM	OVERALL DIMENSIONS IN MM / Y
SP02C	200	200
SP03C	300	300

## F 02 Same step as step E02 to E03

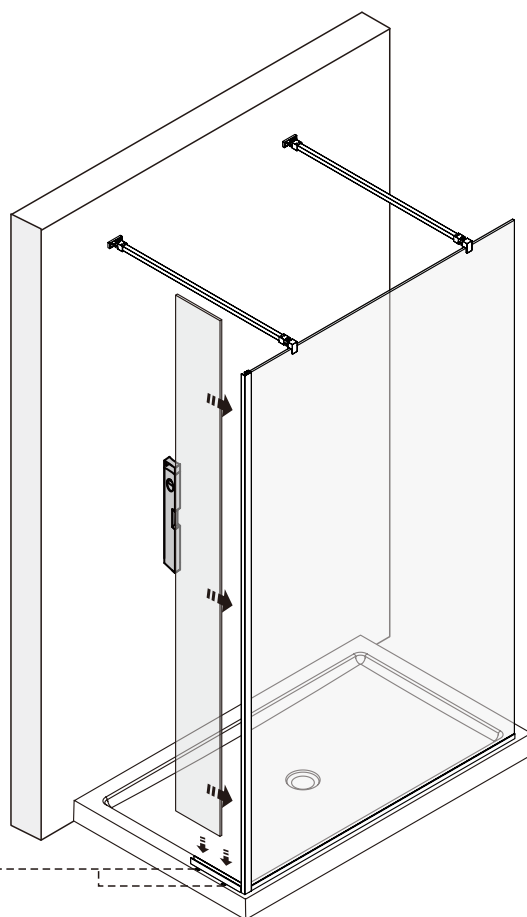
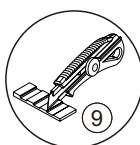
### F 03



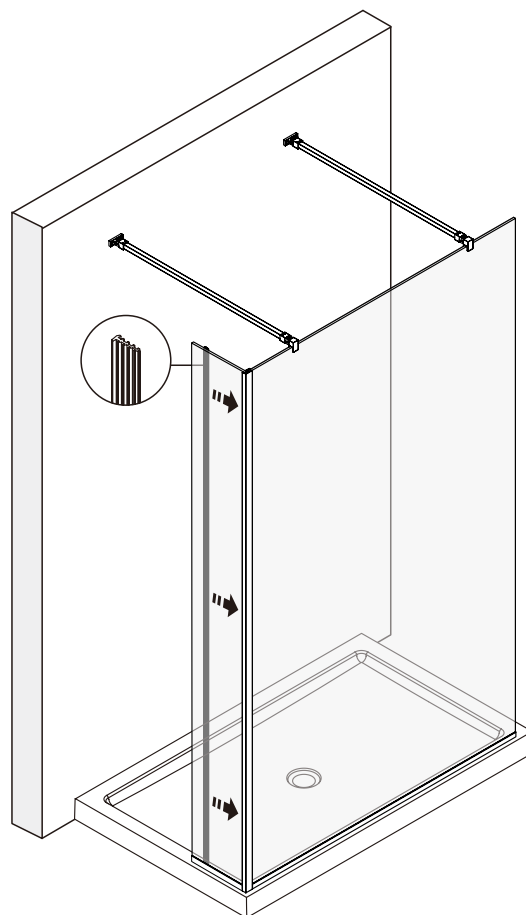
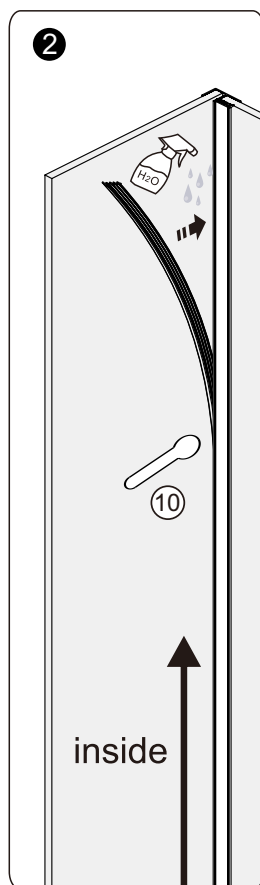
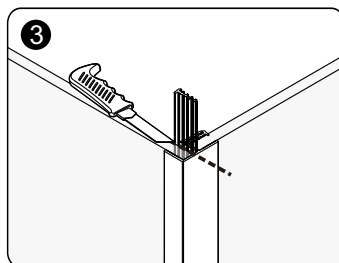
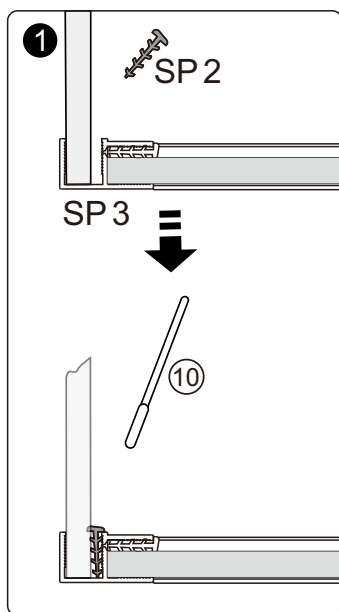
### F 04



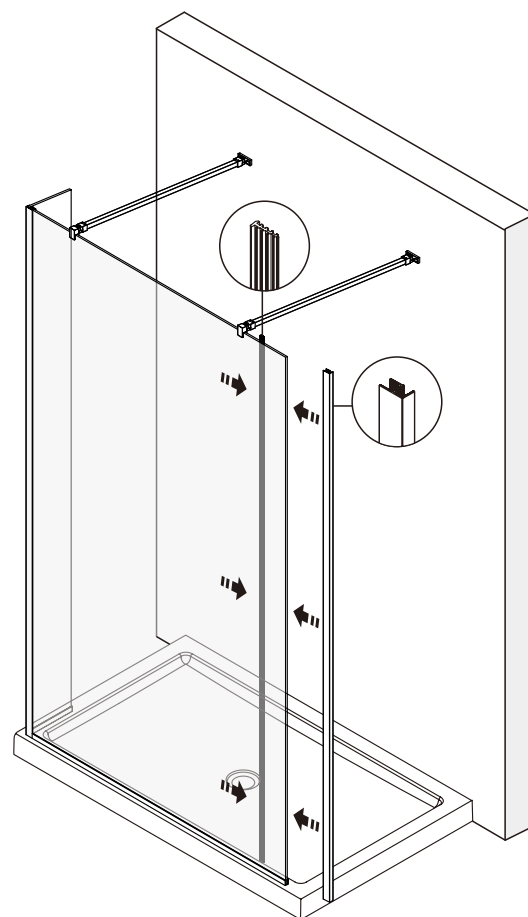
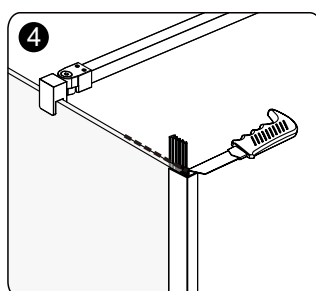
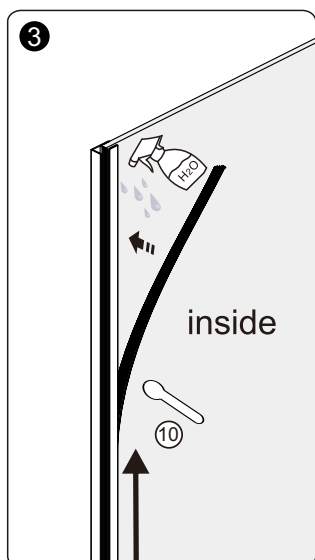
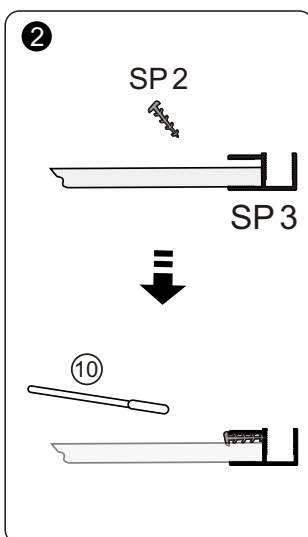
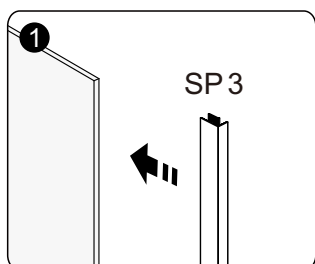
Use the plastic wedge to level the glass if required. Place the glass under the bottom profile, and cut off the excess



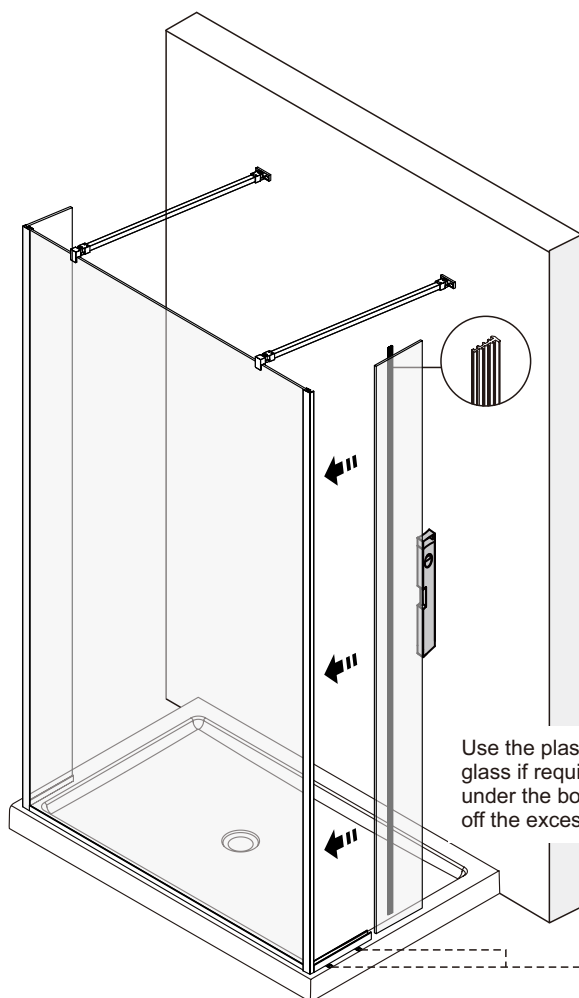
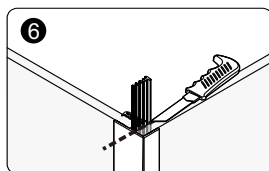
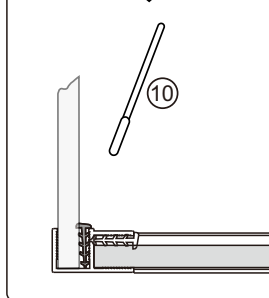
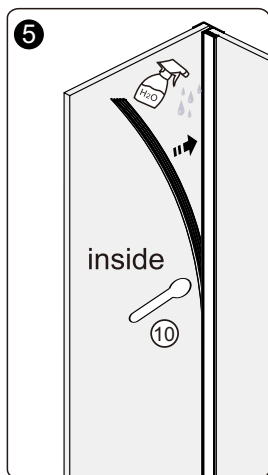
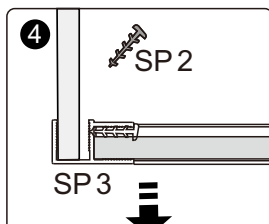
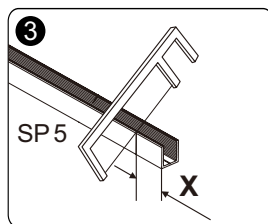
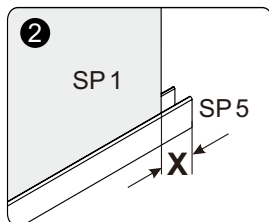
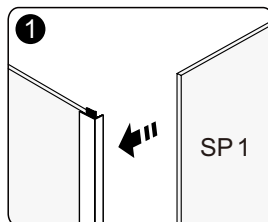
# F 05



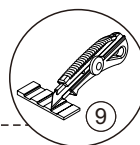
# F 06



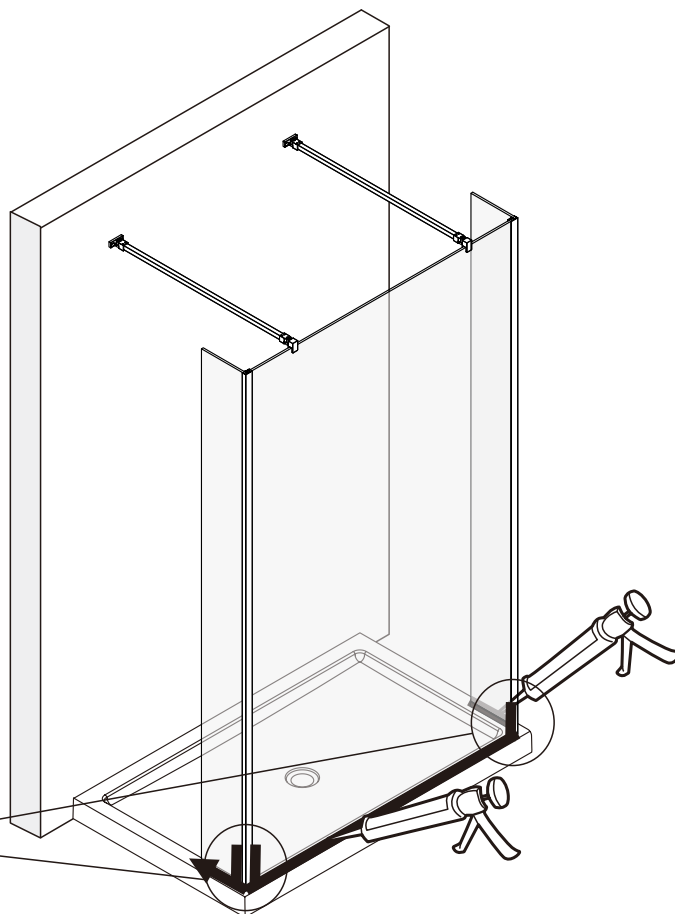
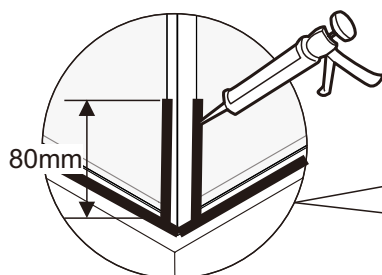
# F 07

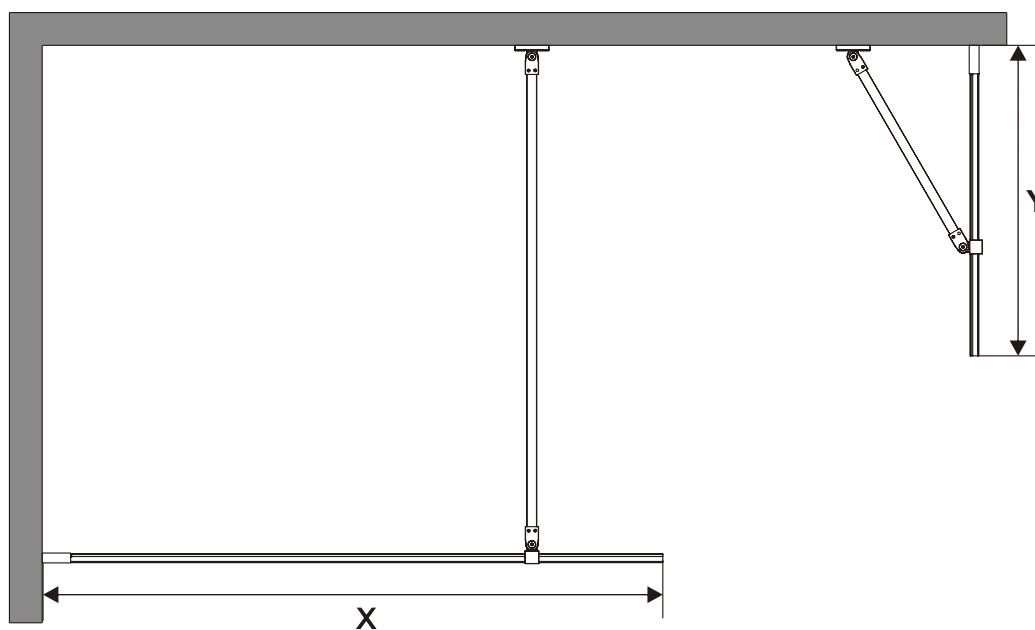


Use the plastic wedge to level the glass if required. Place the glass under the bottom profile, and cut off the excess



# F 08



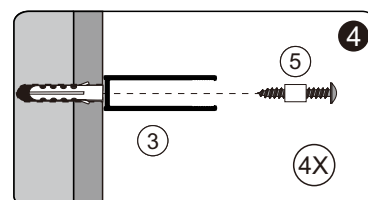
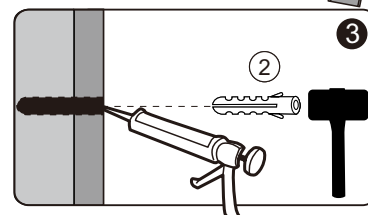
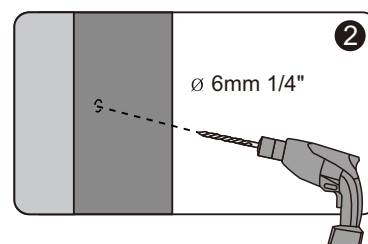
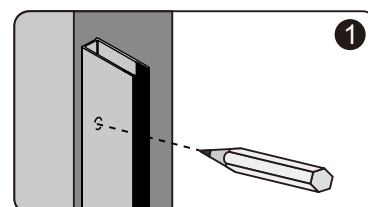
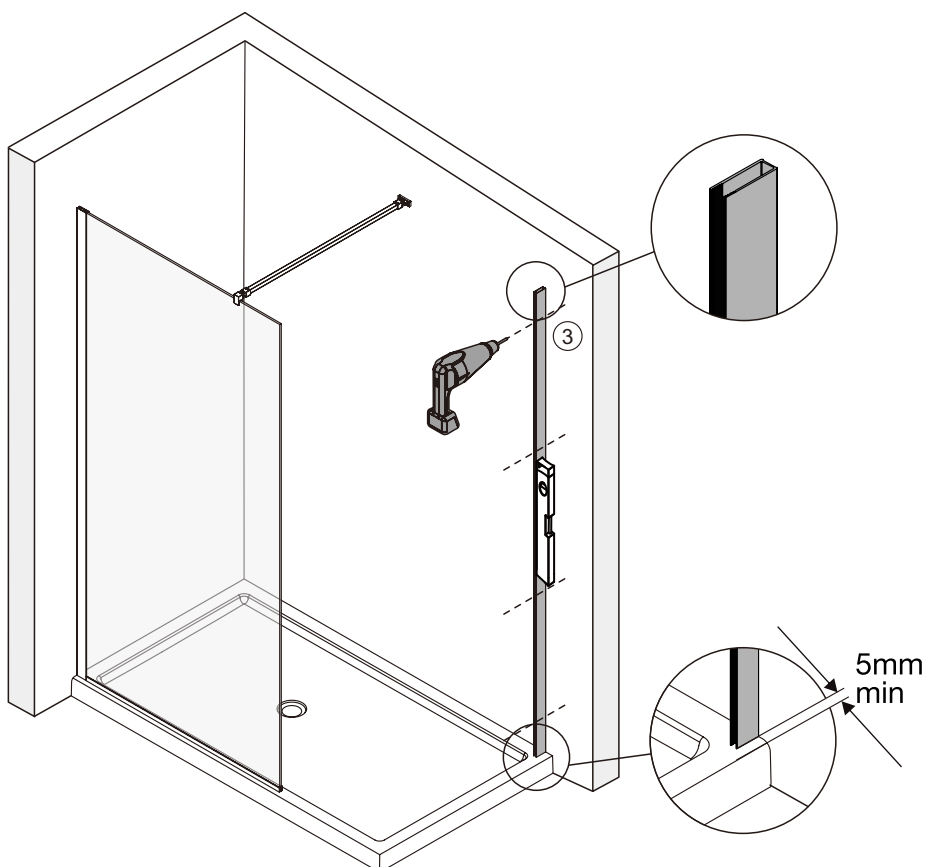
**G<sub>01</sub>**

PRODUCT CODE	SCREEN SIZE IN MM	OVERALL DIMENSIONS IN MM / X
SP10C	1000	980 - 1000
SP11C	1100	1080 - 1100
SP12C	1200	1180 - 1200

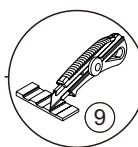
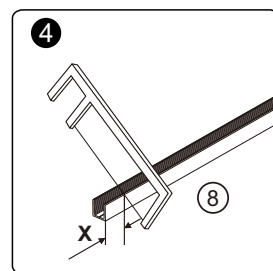
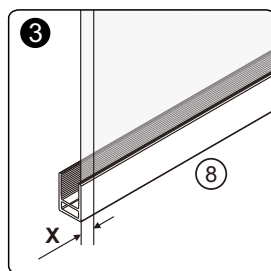
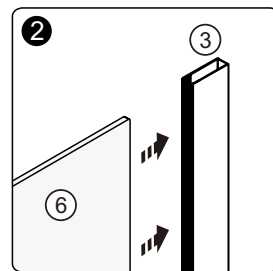
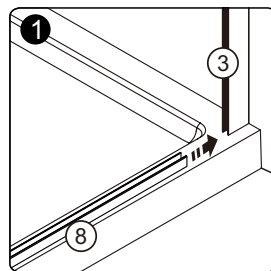
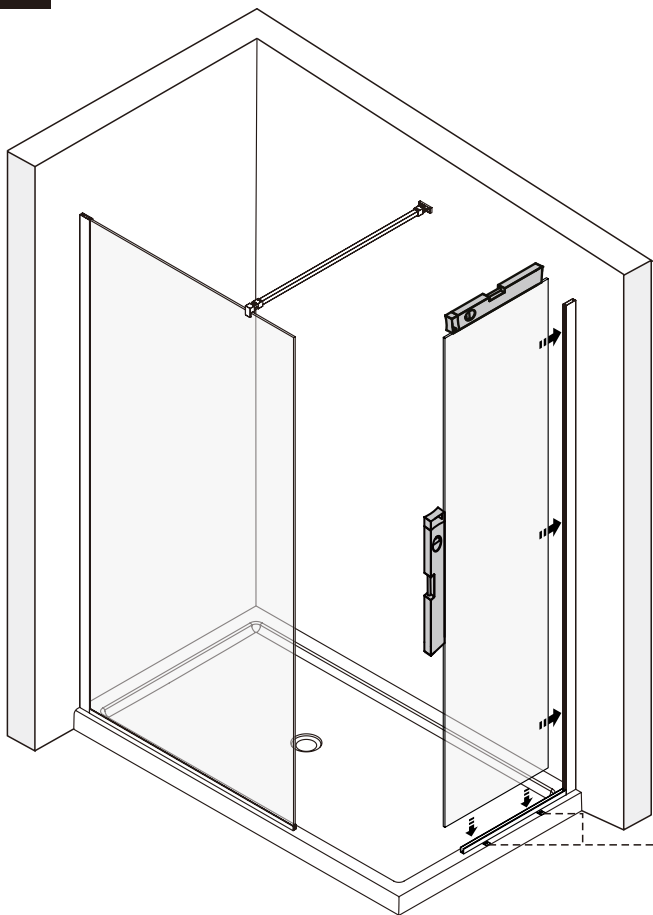
PRODUCT CODE	SCREEN SIZE IN MM	OVERALL DIMENSIONS IN MM / Y
SP70C+SPAB	700	680 - 700
SP80C+SPAB	800	780 - 800
SP90C+SPAB	900	880 - 900

**G<sub>02</sub>**

Same step as step A02 to A04 and B03

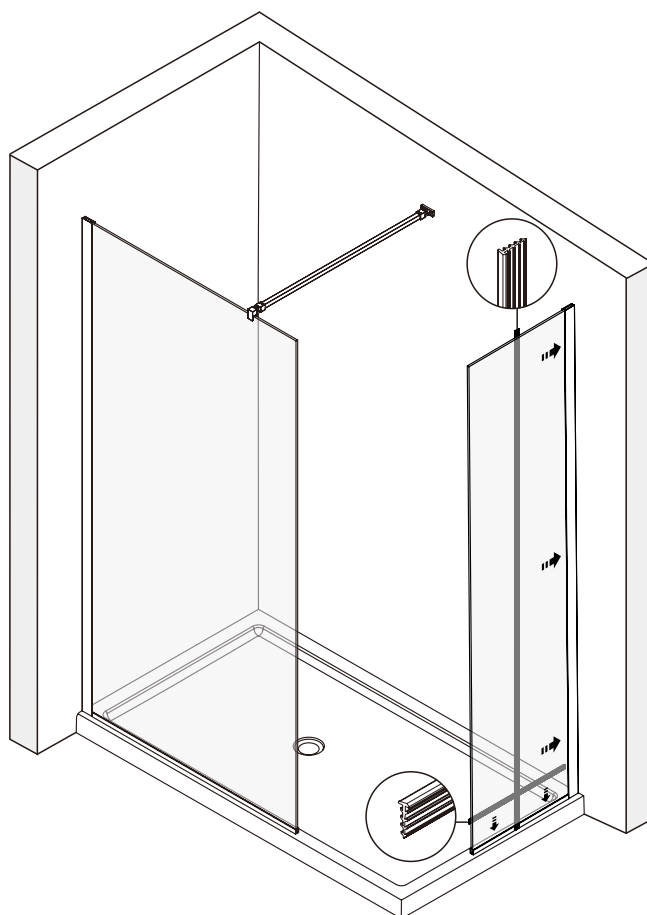
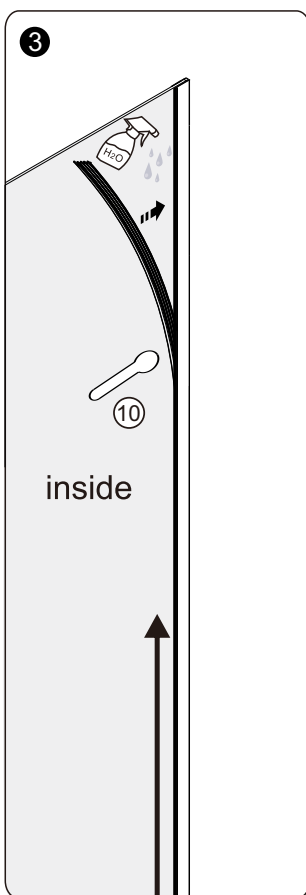
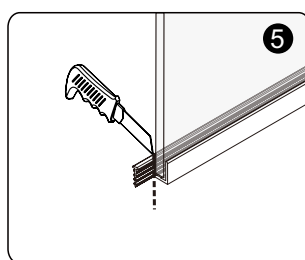
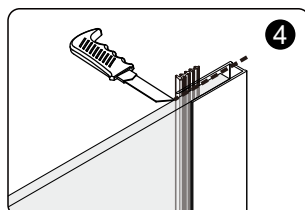
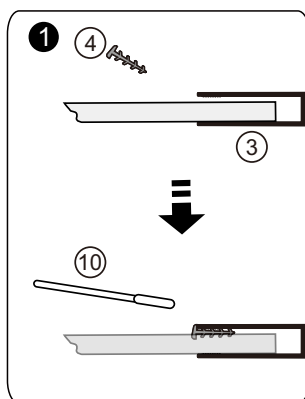
**G<sub>03</sub>**

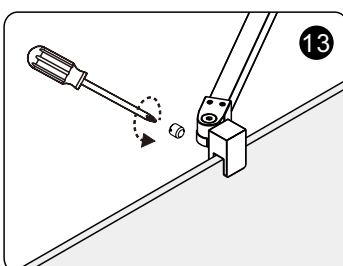
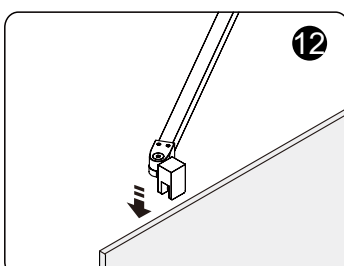
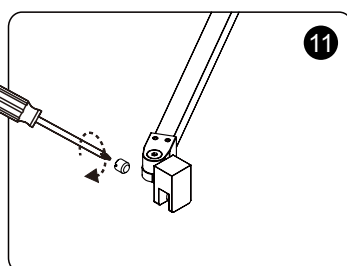
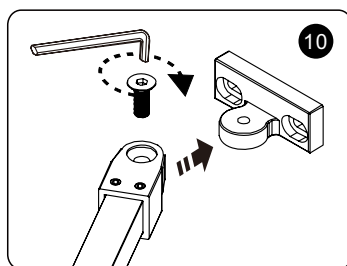
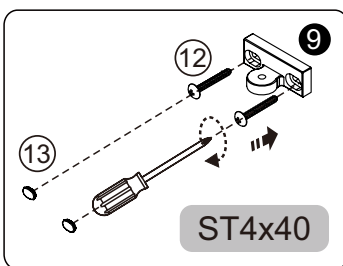
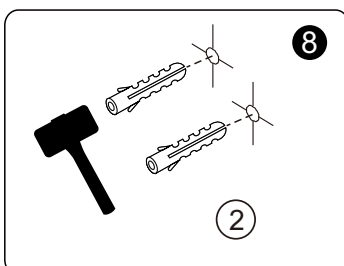
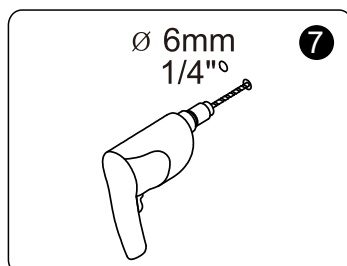
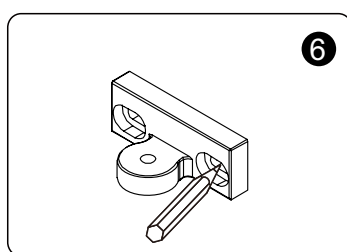
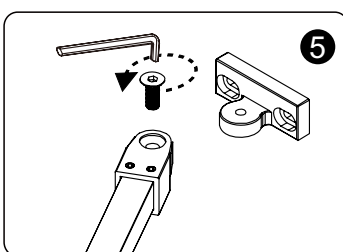
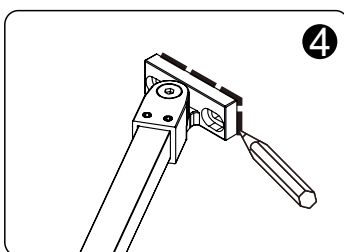
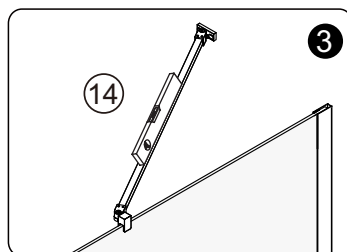
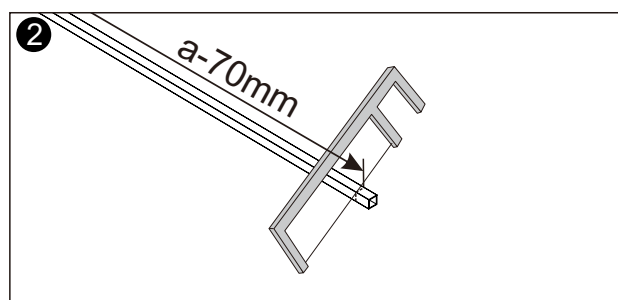
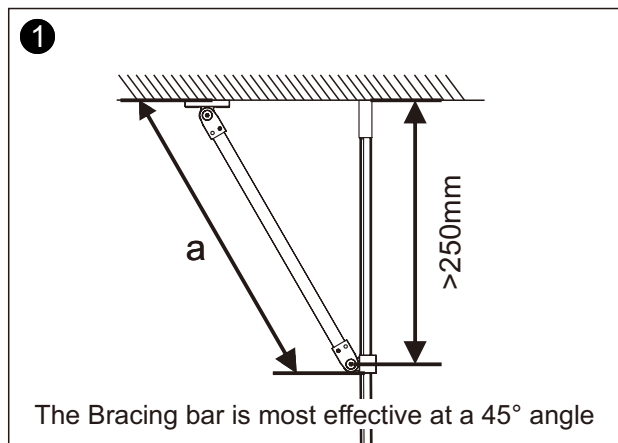
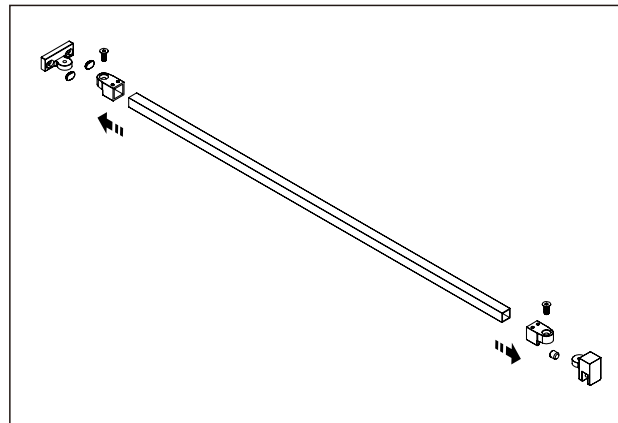
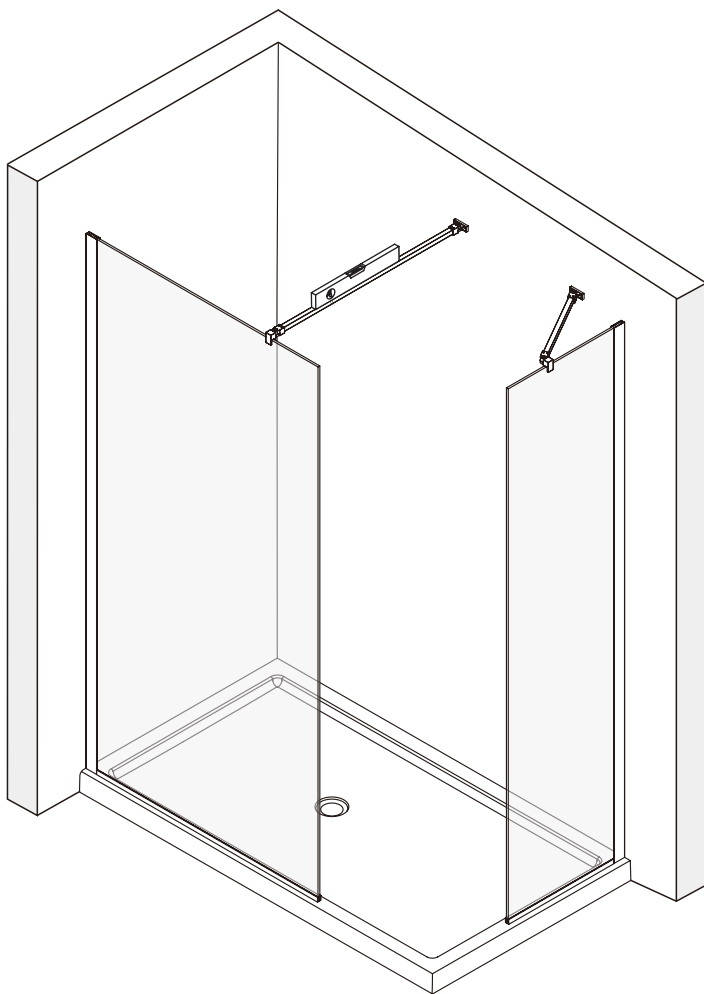
**G 04**



Use the plastic wedge to level the glass if required. Place the glass under the bottom profile, and cut off the excess

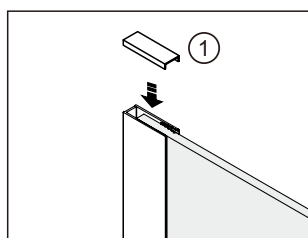
**G 05**



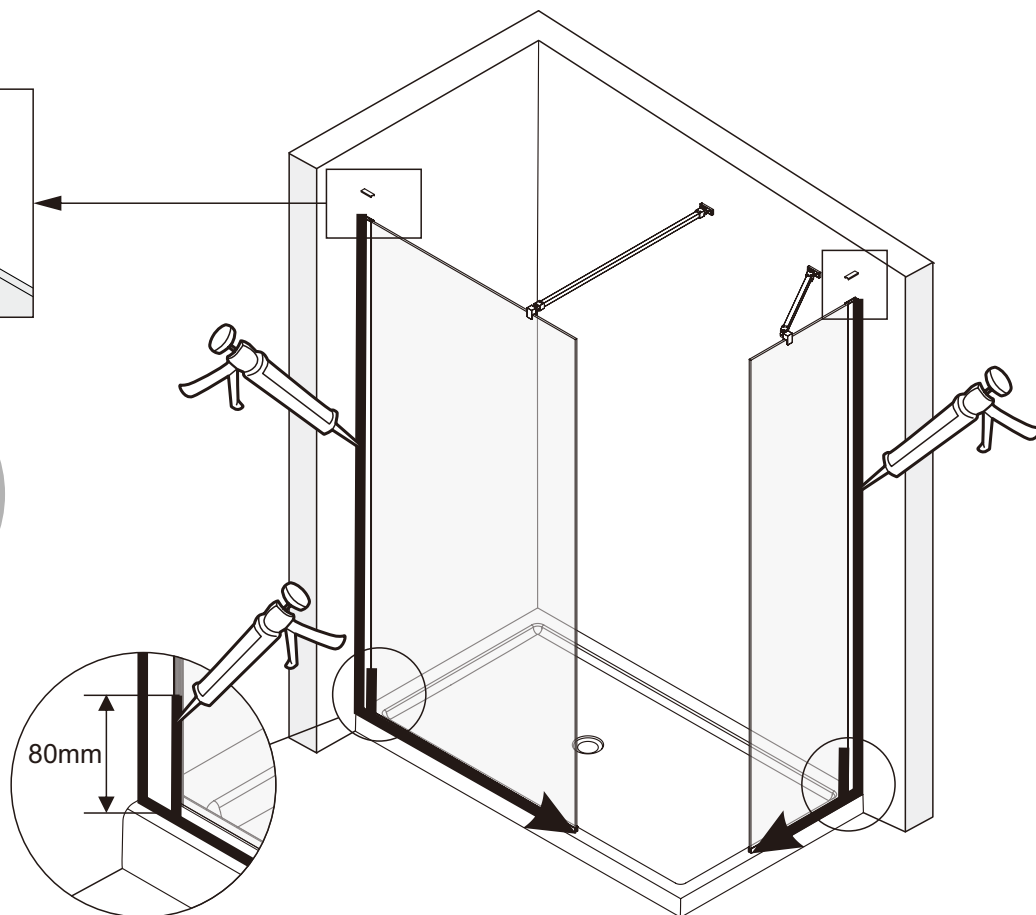




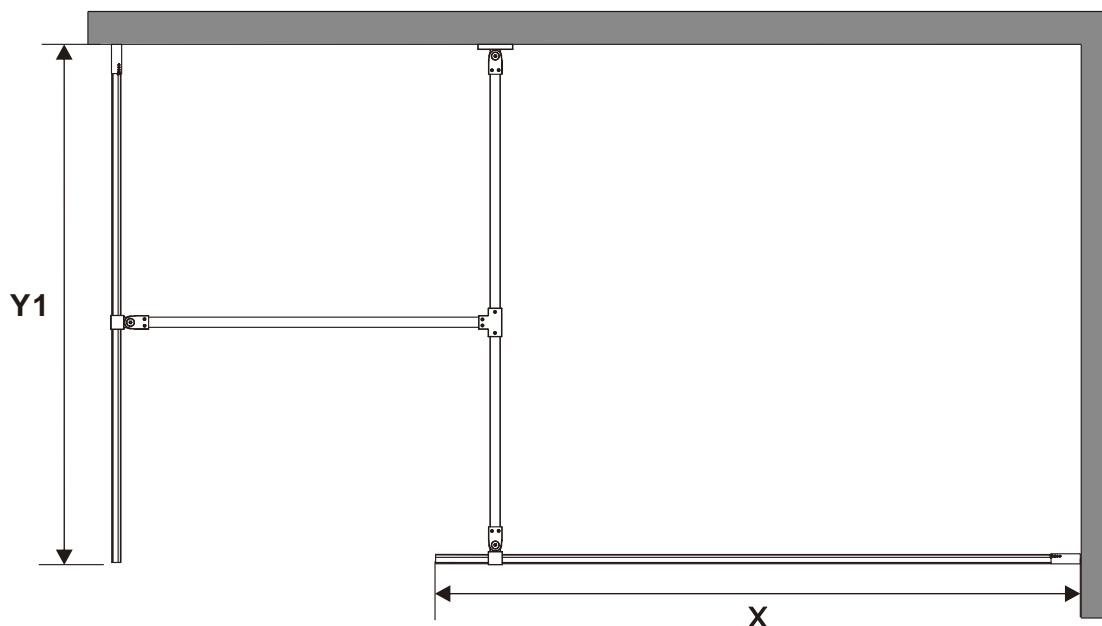
**G<sub>07</sub>**



24 HOURS

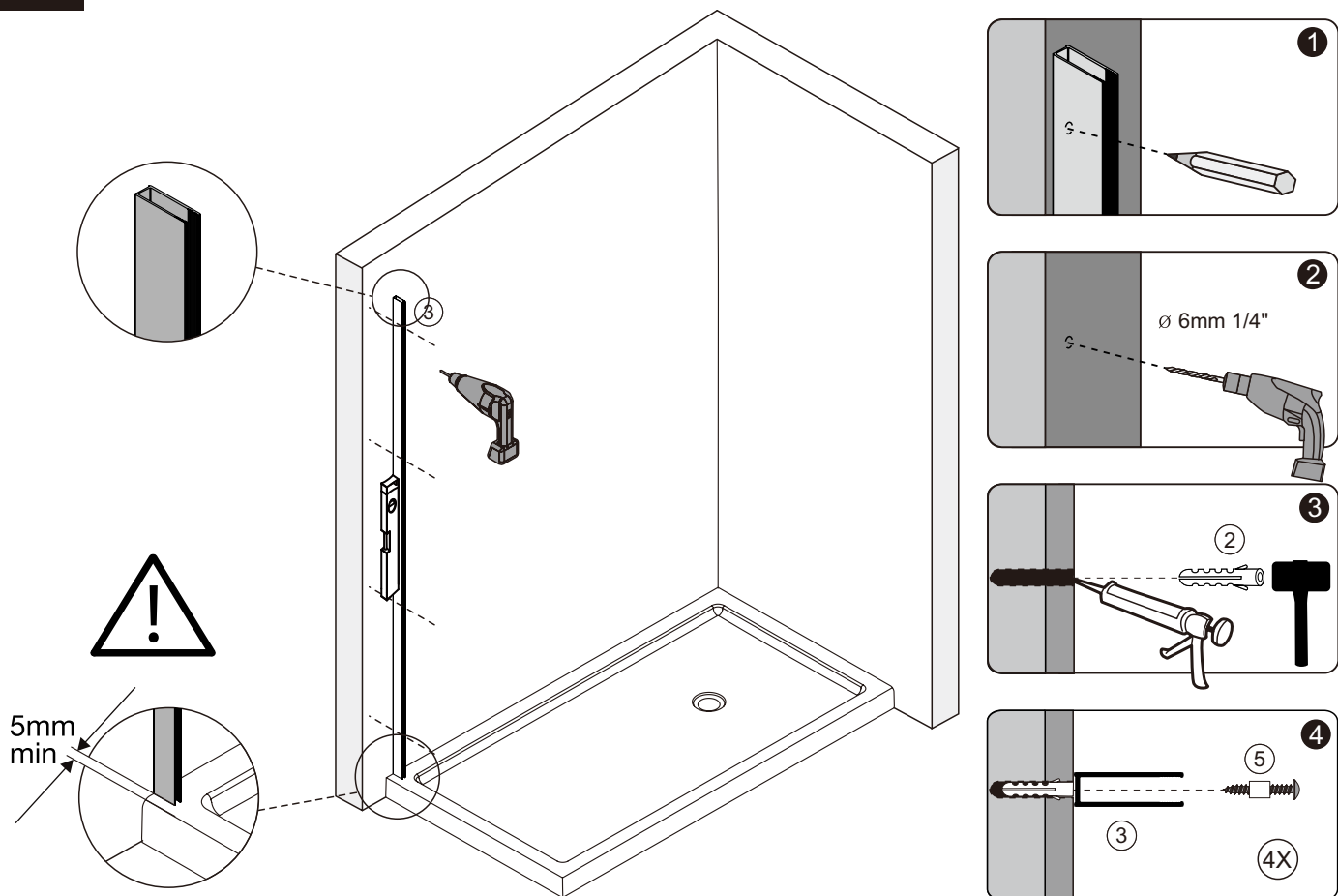


**H<sub>01</sub>**

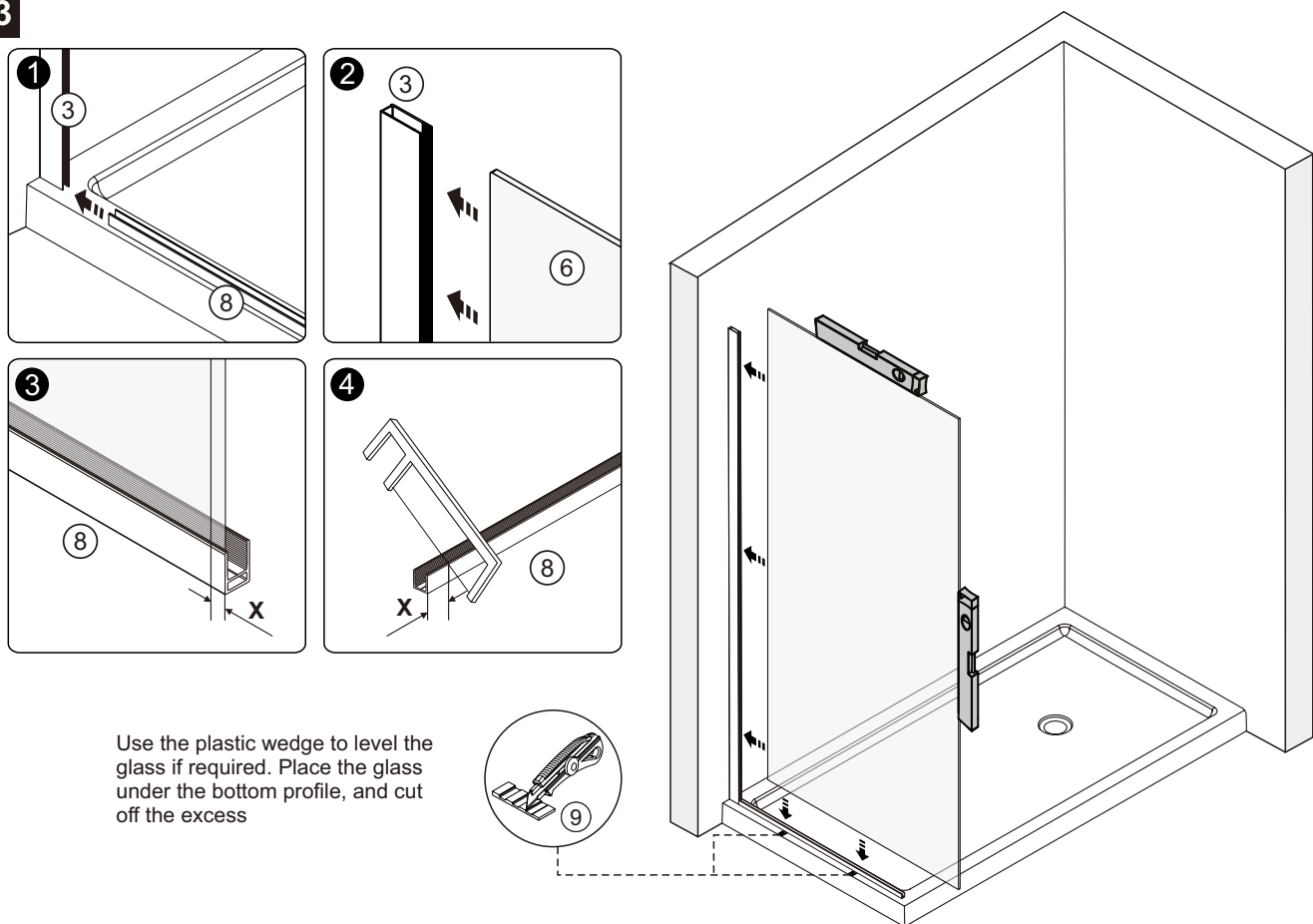


PRODUCT CODE	SCREEN SIZE IN MM	OVERALL DIMENSIONS IN MM / X	PRODUCT CODE	SCREEN SIZE IN MM	OVERALL DIMENSIONS IN MM / Y1
SP10C	1000	980 - 1000	SP70C+SPTB	700	680 - 700
SP11C	1100	1080 - 1100	SP80C+SPTB	800	780 - 800
SP12C	1200	1180 - 1200	SP90C+SPTB	900	880 - 900

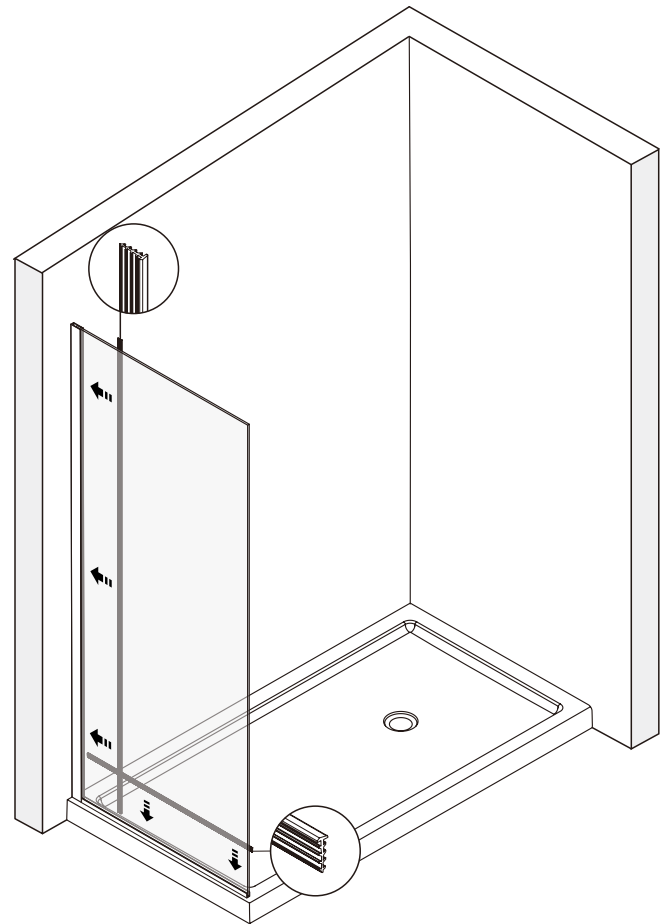
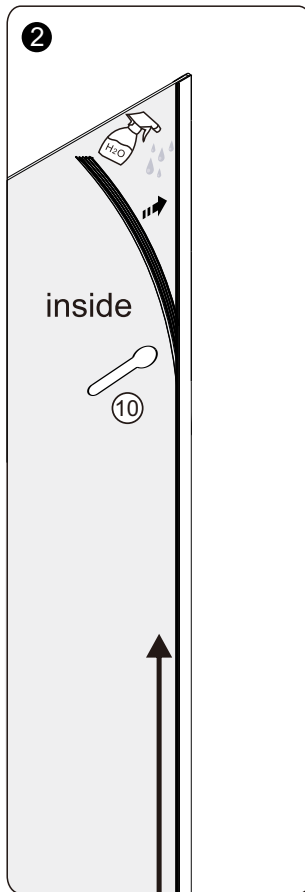
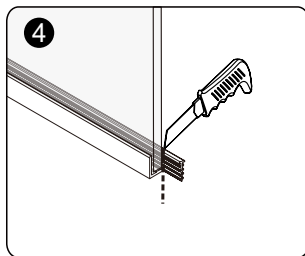
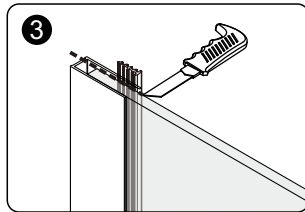
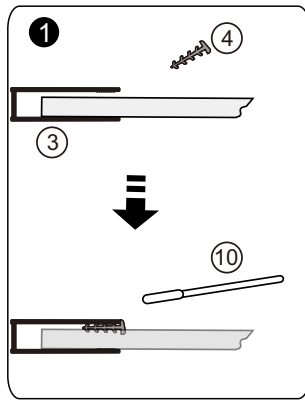
## H 02



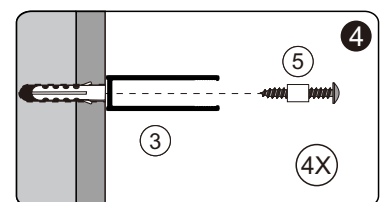
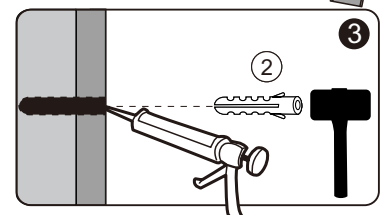
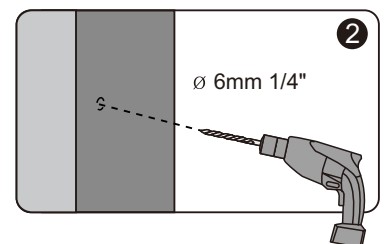
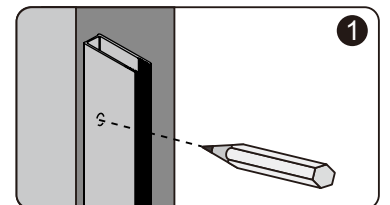
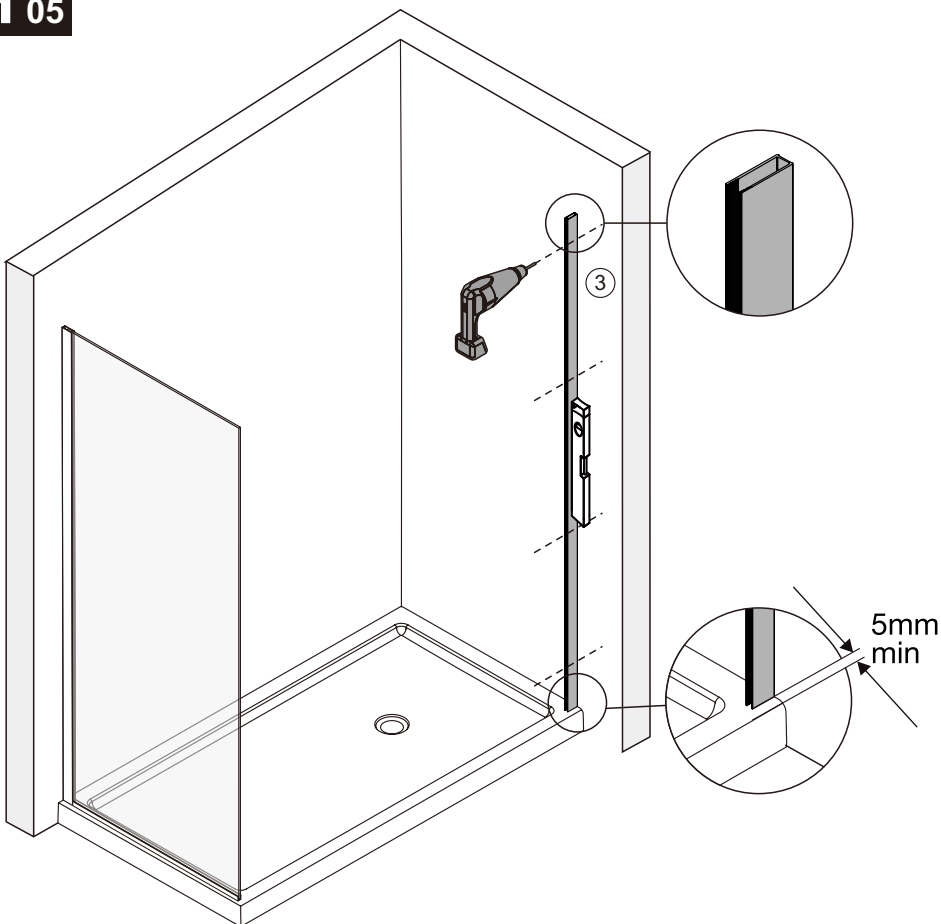
## H 03



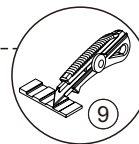
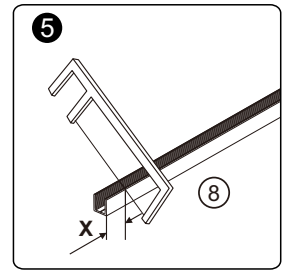
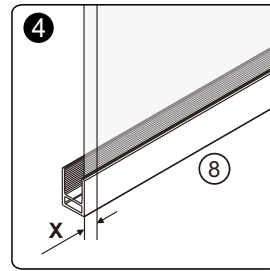
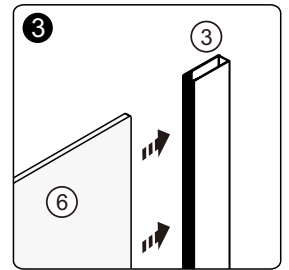
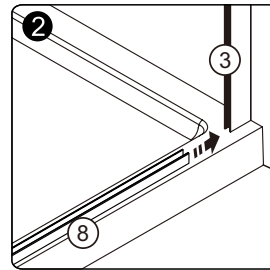
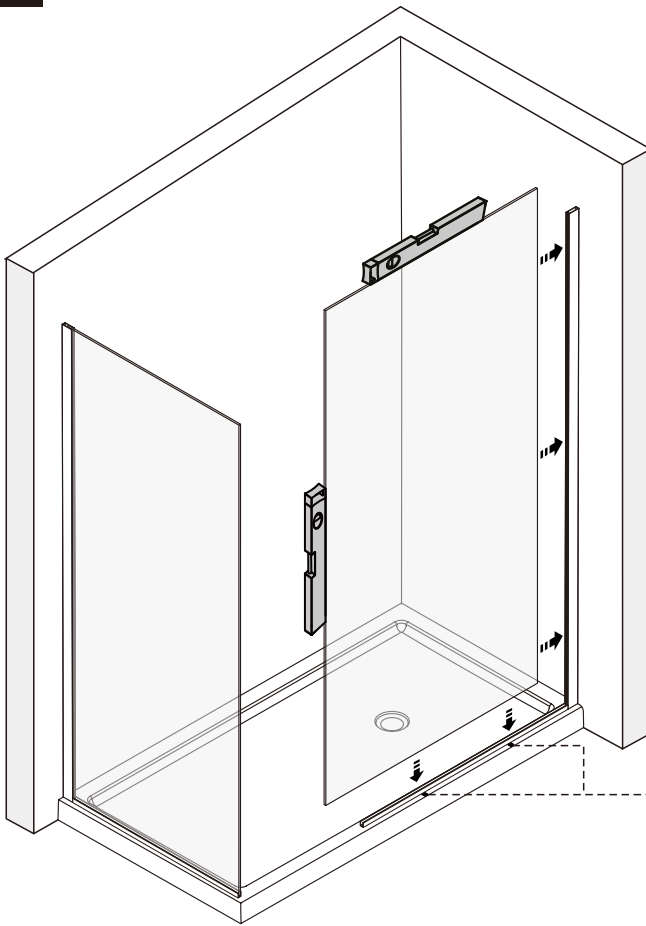
## H 04



## H 05

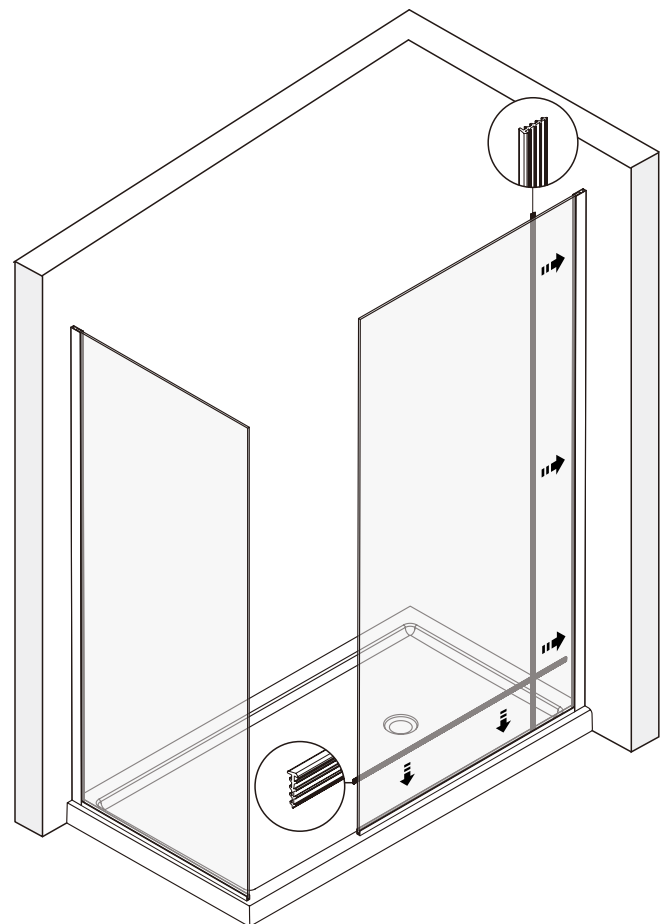
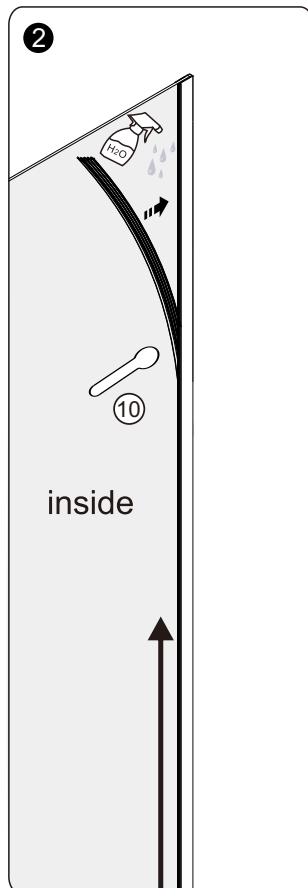
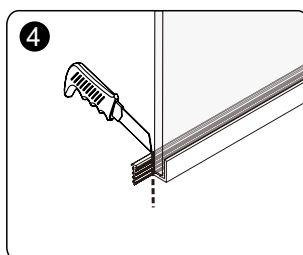
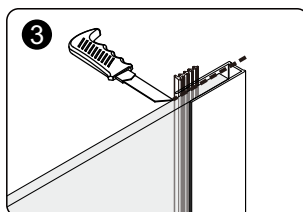
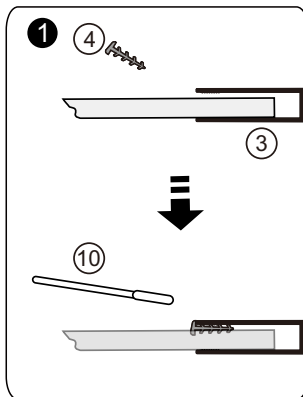


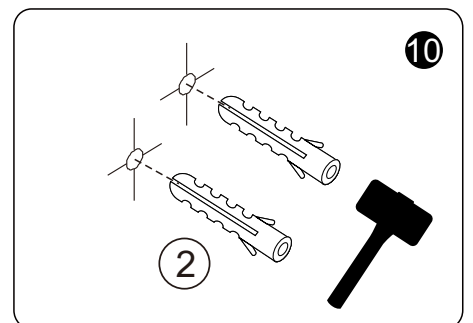
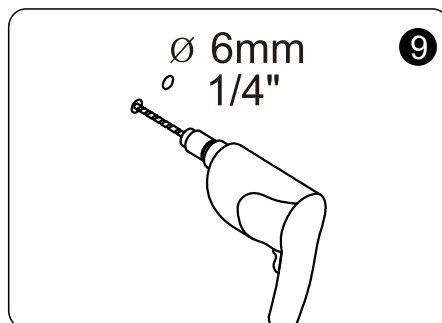
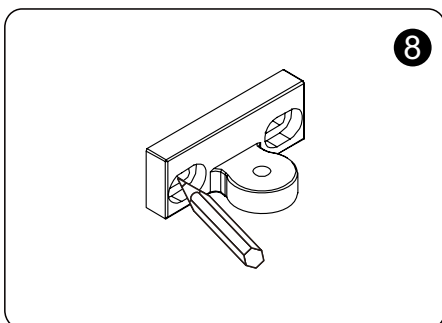
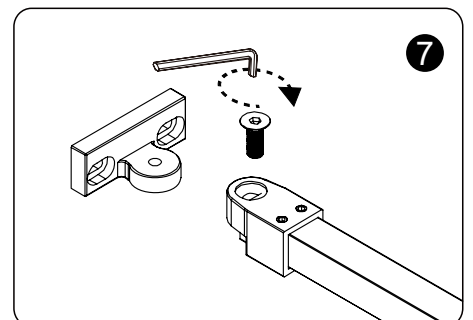
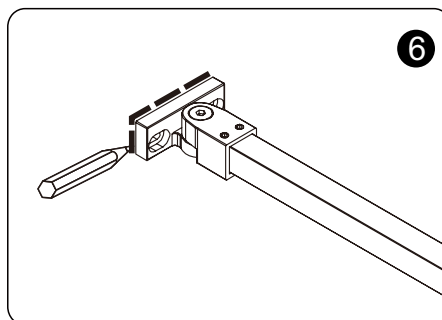
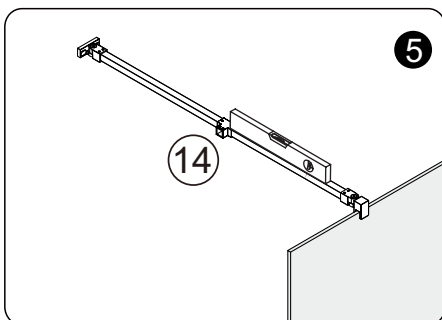
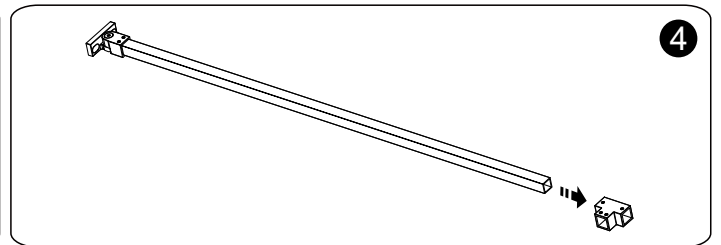
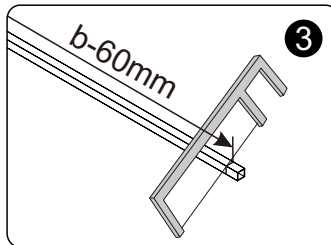
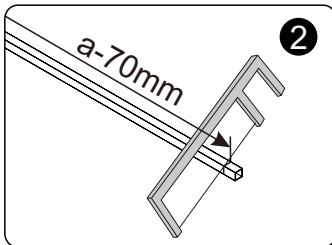
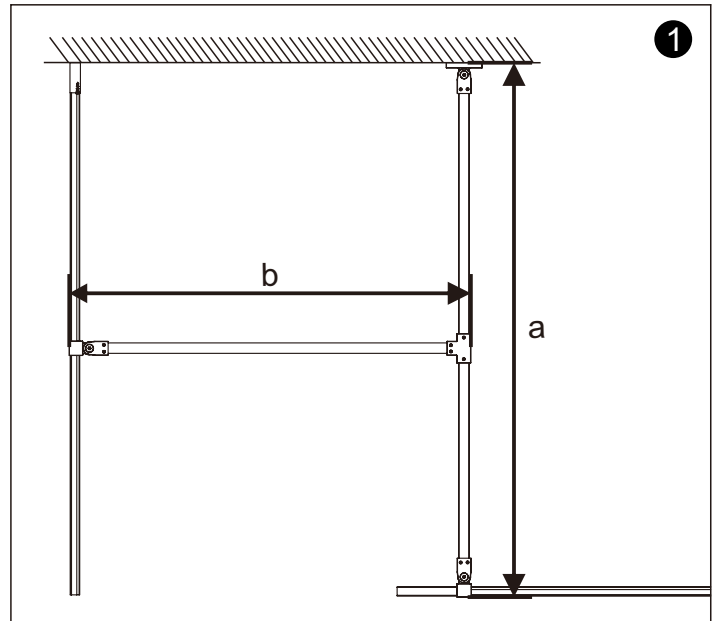
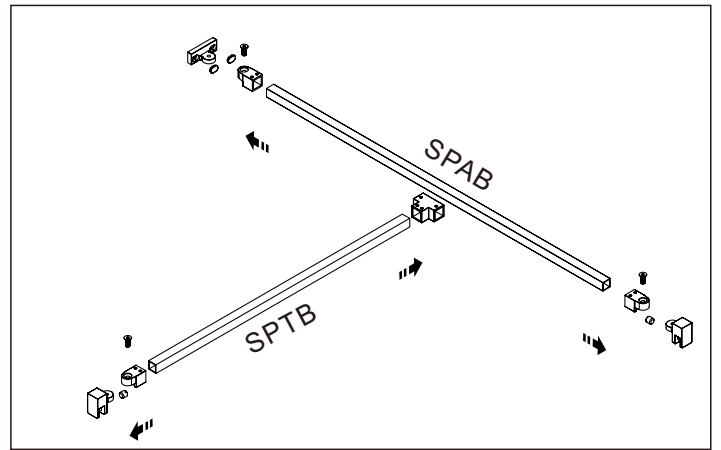
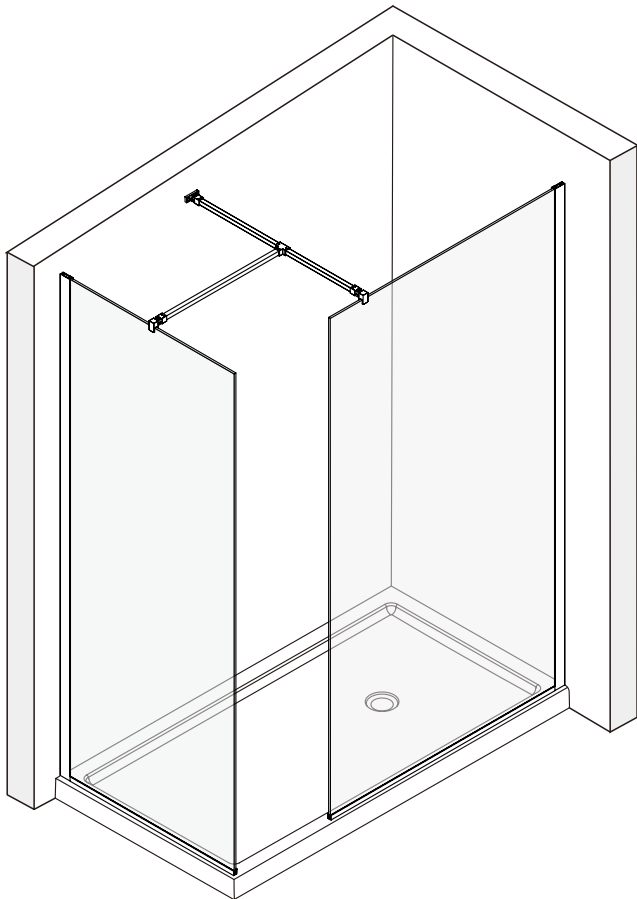
# H 06

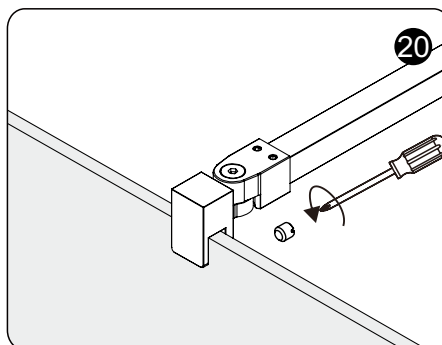
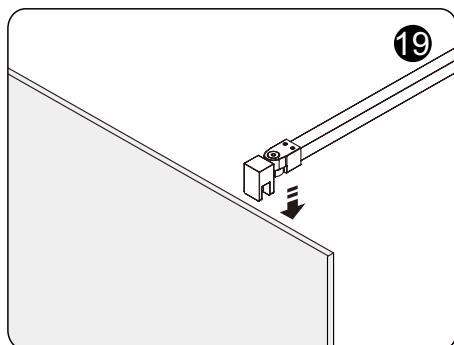
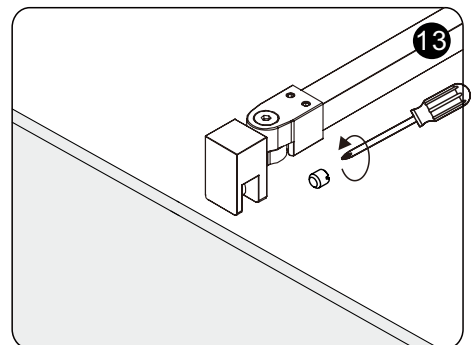
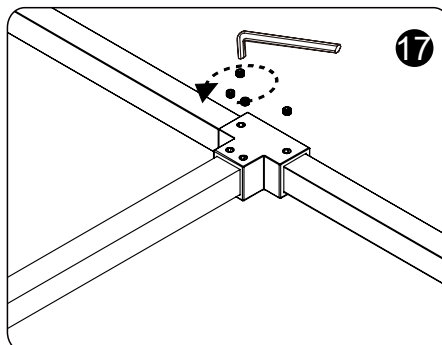
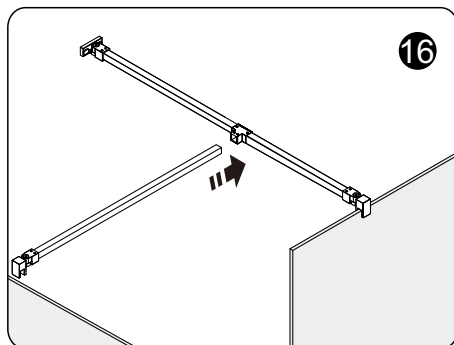
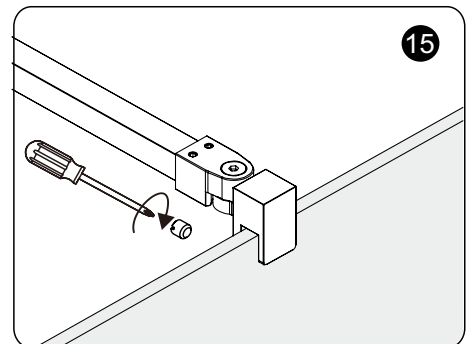
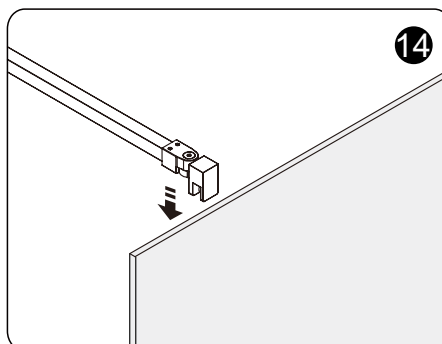
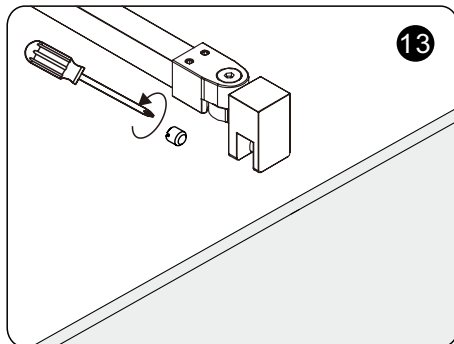
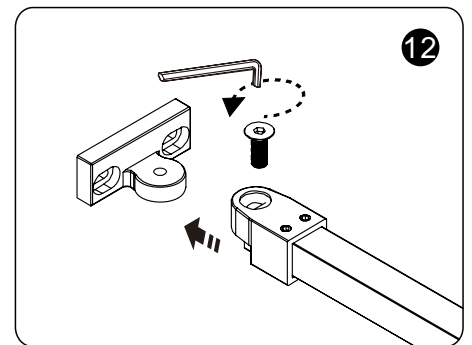
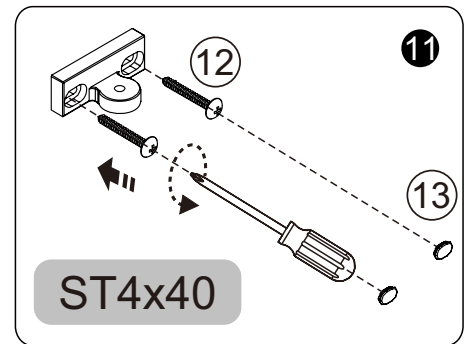
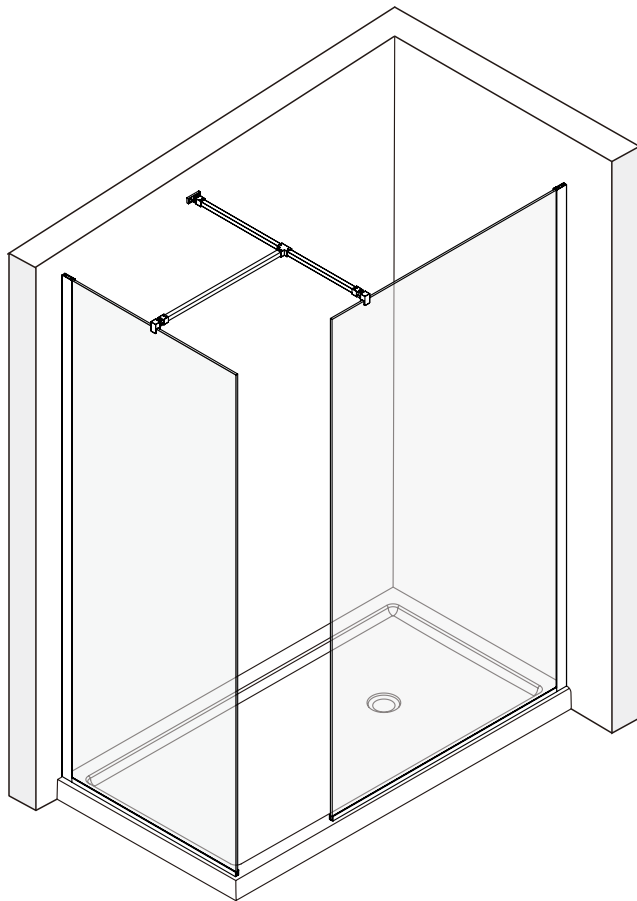


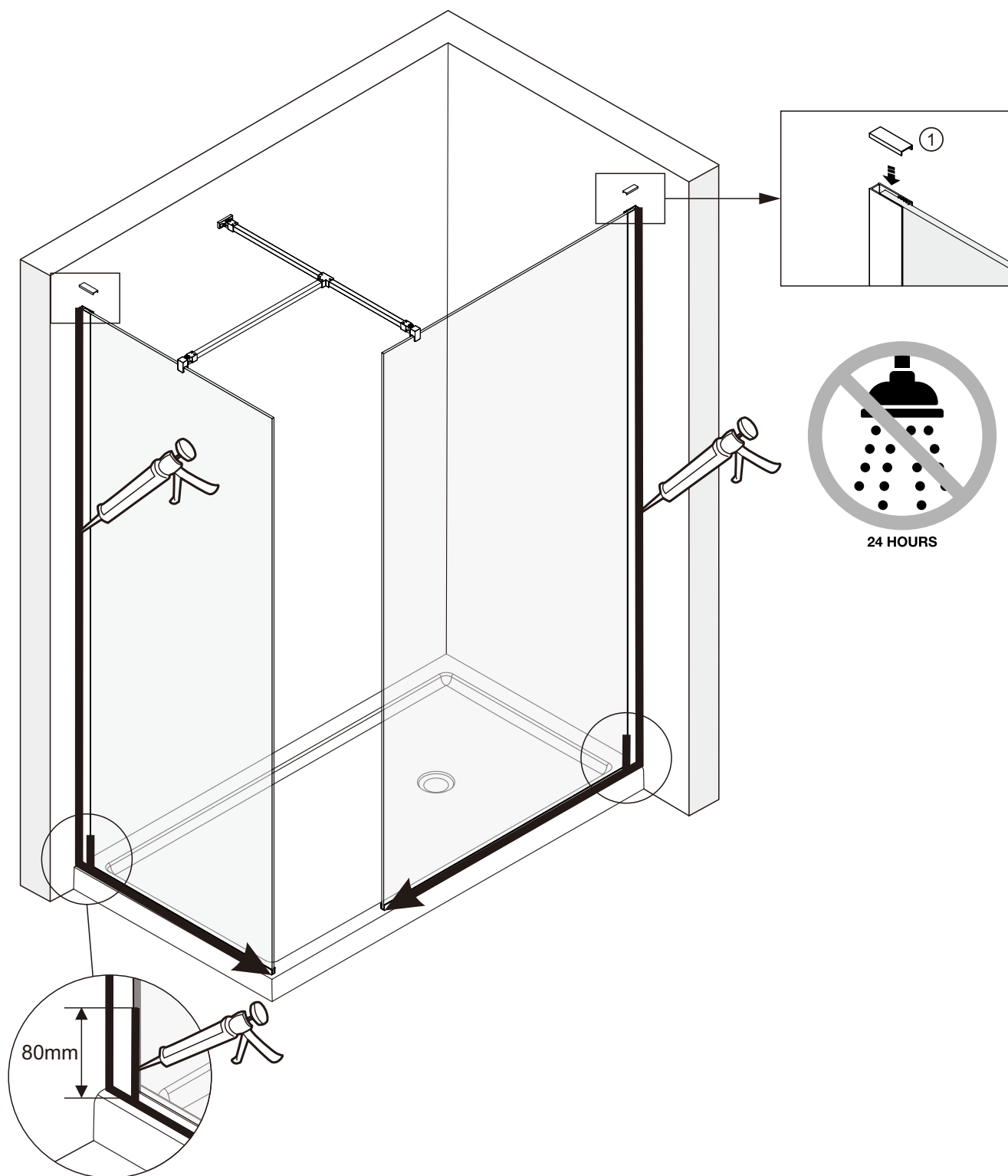
Use the plastic wedge to level the glass if required. Place the glass under the bottom profile, and cut off the excess

# H 07











## SHOWER ENCLOSURES

# CORAM PRODUCT GUARANTEE

We are confident in the quality and durability of our Coram range of shower enclosures and products. As such we offer Coram customers a guarantee against manufacturing defects and faulty materials subject to the terms and conditions of our Coram product guarantee as set out in this document.

Please note that our Coram product guarantees are in addition to the legal and statutory rights of a consumer and these rights are not affected by our guarantees.

### Coram product guarantees

(a) 10 year guarantee for Coram shower enclosures, Coram showertrays and Coram shower panels and bath screens  
From the date of installation we will provide a 10 year guarantee in respect of our range of Coram shower enclosures, Coram showertrays, Coram shower panels and Coram bath screens against manufacturing defects and faulty materials provided that the Coram products are installed, used and maintained in accordance with the manufacturer's instructions, including our care and cleaning advice.

Please note:

(i) the important additional terms and conditions that also apply to this Coram product guarantee as set out in section 3 below; and

(ii) that where Coram products are either "ex display", sold at a discount or used for Business Use then a 5 year guarantee from the date of installation will apply instead of the 10 year period referred to above. See section 3 below for further details and the definition of Business Use.

(b) 4 year guarantee for Coram wheel bearing products

From the date of installation we provide a 4 year guarantee in respect of our Coram wheel bearing products against manufacturing defects and faulty materials provided that they are installed, used and maintained in accordance with the manufacturer's instructions, including our care and cleaning advice.

Please note the important additional terms and conditions that also apply to this guarantee as set out in section 3 below.

(c) 2 year guarantee for Coram seals and gaskets

From the date of installation we provide a 2 year guarantee as regards our Coram seals and gaskets against manufacturing defects and faulty materials provided that they are installed, used and maintained in accordance with the manufacturer's instructions, including our care and cleaning advice.

Please note the important additional terms and conditions that also apply to this guarantee as set out in section 3 below.

### Additional terms and conditions applying to all the Coram products guarantees.

The following terms and conditions apply to all our Coram product guarantees in addition to the terms set out in section 2 above.

1. Our product guarantees are only valid where the products are purchased and used in the United Kingdom and the Republic of Ireland.

2. In bringing a claim under a guarantee, proof of purchase of the product in question will be required.

3. Where installed, we must be given a reasonable opportunity to inspect the product in its installed situation.

4. The Coram product guarantee only covers the original installation. Coram products are not covered by our guarantee once they have been uninstalled, removed or displaced for any reason; including for example as part of a bathroom renovation.

5. The Coram product guarantee only applies to the original purchaser and is non-transferable.

6. Where Coram products are "ex display" or sold at a discount or used for Business Use then a 5 year guarantee from the date of installation will apply instead of the 10 year period referred to in Section 2 above. For the purposes of our guarantees "Business Use" means a product that is used wholly or mainly in connection with a business, profession, institution or establishment including of a care or commercial

nature; and for these purposes and by way of non-exhaustive examples only, the use of our products in following contexts shall constitute Business Use: use in/by hospitals, landlords, social housing, nursing homes and hotels.

7. Our Coram product guarantees do not cover fair wear and tear or damage arising from "Misuse and Abuse" which includes the following:

- a. Improper installation (including failure to follow our installation instructions, local bylaws and general good plumbing practice);
- b. Overtightening of screws/excessive force;
- c. Inappropriate cleaning products and misuse of them;
- d. Failure to follow our cleaning and maintenance instructions;
- e. Abrasive cleaning products;
- f. Accidental damage;
- g. Incompatible products used alongside;
- h. Improper use of products;
- i. Product modification without obtaining manufacturer advice;
- j. Malicious or intentional damage or neglect;
- k. Build-up of mildew and lime scale;
- l. Non-compliance with building regulations and codes of practice;
- m. Incorrect tools being used;
- n. Improper storage and handling of product including exposure to extreme temperatures;
- o. Installation of a product suspected to be damaged; and
- p. Use of insufficient or inappropriate fixings.

8. Glass: Please note that any toughened glass panels are not covered by our Coram product guarantee once the installation / assembly activity has commenced.

9. As regards bespoke / tailored products then Coram cannot accept responsibility under the Coram product guarantee if the measurements or specification supplied to Coram by the customer or by a third party are incorrect.

10. If in our opinion there is a valid claim under our Coram product guarantee then we will at our option either provide a replacement product (or part as applicable) or refund the price of the applicable product. Please note, for the avoidance of doubt that our Coram product guarantee does not include an installation service nor cover the cost of any labour to replace a product the subject of a valid claim under our guarantee.

11. Our policy is one of continuous improvement. Where a valid claim under a Coram product guarantee has been brought and we offer a replacement product in circumstances where identical product are no longer available, then we reserve the right to replace it with our nearest equivalent product.

12. Where we provide a replacement product or part under our Coram product guarantee then this does not extend the length of the guarantee; such that the Coram product guarantee on the replacement part or products will expire at the same time as under the original Coram product guarantee.

13. If a claim is made under a Coram product guarantee and it is ultimately revealed that the claim is invalid for whatever reason, including for example that the product has been Misused or Abused (including improperly installed), then we reserve the right to charge the claimant in respect of any expense we reasonably incur as a result of dealing with and investigating such claim; including our service personnel's time and the cost of any replacement products or parts supplied. In addition we reserve the right to charge for the cost of travel outside mainland UK.

14. It is the customer's and their contractor's responsibility to inspect the products on purchase and/or delivery to identify any damage or faults. Our Coram product guarantees do not cover Coram products in circumstances where they are installed notwithstanding that they are damaged or faulty and such damage or fault is obvious, or should have been reasonably obvious, immediately prior to installation commencing. Consequently we will not accept a claim in respect of a Coram product where it has been installed with a fault that would have been clearly visible before installation.

Note – for further details regarding claiming under the guarantee plus care and cleaning advice please go to:

[www.coram.co.uk/terms-conditions/](http://www.coram.co.uk/terms-conditions/)