

# Vitality Lever

Vitality Lever Basin Mixer & Press Top Waste

Product Code: VL120

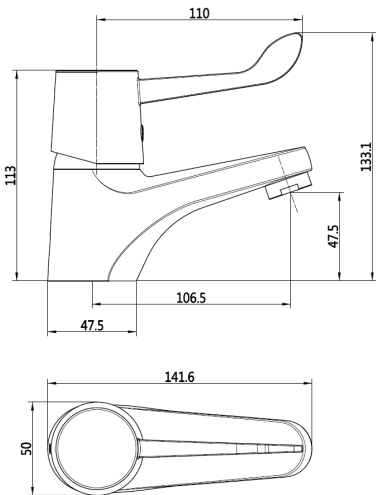
Finish: Chrome



## Features

- Construction:** Brass
- Valve/Cartridge type:** 40mm Ceramic Cartridge
- Supply:** Suitable For Low Pressure Systems
- Working Pressures:** 0.1 - 5.0 bar
- Inlet connections:** ½" BSP
- Flexi or Copper:** Flexi Tails - M10 - 400mm

Suitable For High & Low Pressure Systems  
40mm Ceramic Cartridge  
Red & Blue Temperature Indicator  
Single Flow Mono  
Pre-Fitted Flow Straightener  
Fixing Kit  
(Metal Horseshoe Fixing Plate, Rubber Horseshoe Fixing Washer, Metal Bar and Locking Nut)  
Supplied With 2 X 400mm Flexi Tails



\*Please refer to website for full warranty details.

## Flow (Bar - l/min, open outlet)

### Spout

Flow 0.1	Flow 0.3	Flow 0.5	Flow 1.0	Flow 2.0	Flow 3.0	Flow 4.0	Flow 5.0
2.5	3.8	5.1	7.4	10.5	13	15.1	16.9

