

Maintenance

In the unusual event that your products performance may have deteriorated over a period of time . The bath shower mixer cartridge(s) (4 or 20) may require cleaning. To do so :-

1. **Ensure that both the Hot and Cold water supplies are isolated.**
2. Remove Cap(s) (1) and undo Grubscrew(s) (2). This will allow Handle(s) (3) to be removed. The Tap cartridge(s) (4 or 20) are now exposed.
3. Unscrew and remove the Cartridge(s) (4 or 20) from the bath shower mixer (5). Take note of which side each cartridge was removed from. ie left or right. This is important for correct operation after re-assembly.
4. Taking care with the Cartridge(s) (4 or 20), soak the Cartridge(s) (4 or 20) in a suitable de-scalant or mild detergent, taking care not to damage the cartridge(s) seals and then gently rinse the Cartridge(s) (4 or 20) clean.
5. Ensure there is no debris inside the Bath shower mixer (5), taking care not to damage any sealing faces.
6. Refit the Cartridge(s) (4 or 20) to the bath shower mixer body (5) (ensure each cartridge is fitted in the correct side) and tighten. **Please do not over tighten the cartridge into the tap body as it may permanently damage the cartridge.**
7. Ensuring the Cartridge(s) (4 or 20) are in the 'Off' position , refit the Tap handle (3), tighten Grubscrew (2) and refit Cap (1).
8. Turn on the hot and cold water supplies to the bath filler , check the correct operation of the bath shower mixer and any joints around the bath shower mixer for leaks.
9. Turn off the bath shower mixer

Product Care

To maintain a high quality finish of your product , you should avoid using any abrasive detergents. Some detergents will aggressively attack the surface over a period of time leading to irreversible damage. Instead, it is advisable to use a soft cloth with warm water . This will significantly prolong the life and looks of the product. If for some reason you need to use a detergent when cleaning , only use a low concentrated brand.

Warranty

Methven warrants this product against manufacturing defects and that it is suitable for use under the general operating conditions specified in this instruction sheet. However, regional regulations apply and may affect your warranty. Please refer to www.methven.com or call customer service for full details.

New Zealand
0800 804 222

Australia
1300 638 483

UK
0800 195 1602

KEA Bath Shower Mixer Installation Instructions



Your product should be fitted in compliance with the Water Authority Regulations. If you are unsure as to what the regulations require, you can contact your Local Water Authority for further details.

Before commencing installation please ensure that you have :-

1. Checked the contents of the box to ensure all parts are present and correct.
2. Read these instructions carefully to understand the installation requirement.
3. Obtained the correct tools to perform a trouble free installation.
4. Considered the surrounding environment where the installation is to take place and any potential hidden dangers.

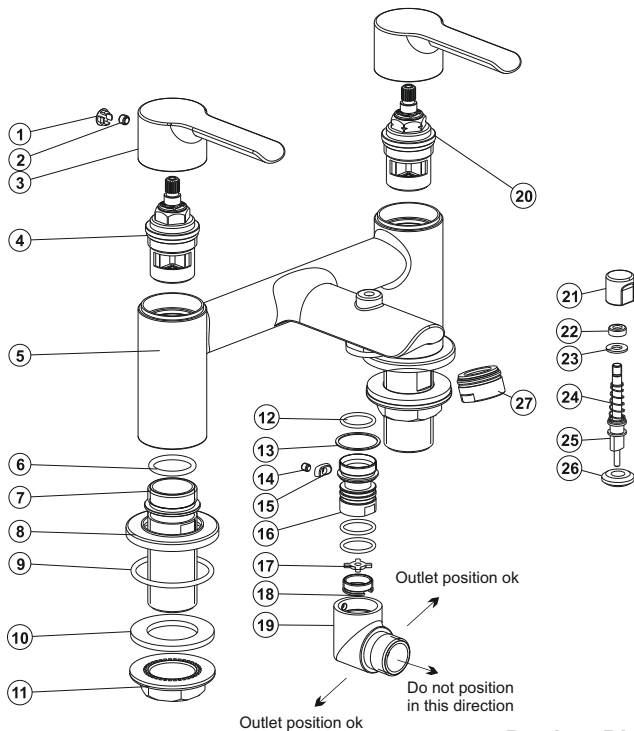
Taking the above into consideration should result in a smoother, trouble free installation

Operating Conditions

Your Bath shower mixer is designed to be used in conjunction with either High or Low water pressure systems. Your product should be fitted in compliance with the Water Authority Regulations. If you are unsure as to what the regulations require, You can contact your Local Water Authority for further details.

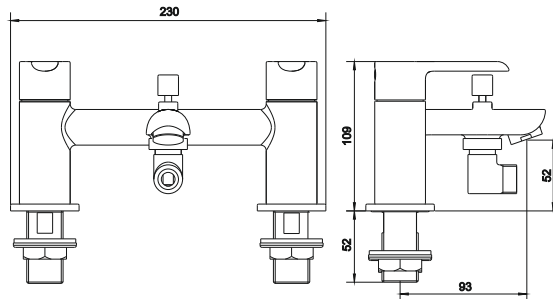
Minimum operating pressure = 0.5 bar
 Maximum operating pressure = 5 bar
 Maximum Static Pressure = 10 bar

Contents



Part	Code	Description
1	T10060	Cap
2	30100595	Grubscrew
3	B50130-002	Handle
4	E20137	Hot Cartridge
5	B50150-001	Bath/shower mixer Body
6	40000048	Inlet Tail Sealing Washer
7	B50130-004	Inlet Tail
8	B50130-003	Plinth
9	40000082	Plinth Seal
10	B51031-008	Sealing Washer
11	B51031-009	Nut
12	40000024	
13	A12500-007	
14	30100119	
15	A10040-003	Shower outlet Swivel Connector
16	B50150-002	
17	B50150-003	
18	B50150-005	
19	B50150-007	
20	E20136	Cold Cartridge
21	B55130-003	
22	B55120-002	
23	B55080-006	Diverter Assembly
24	B55580-015	
25	B55600-008	
26	B50150-004	
27	B28070-016	Flow Straightener

Product Dimensions



Important points to note before commencing Installation of your Bath shower mixer. You should have :-

- Checked the contents of the box and all parts are present and correct.
- Checked to ensure the minimum site operating conditions can be met.
- The correct tools to perform a trouble free installation.
- Considered the surrounding environment where the installation is to take place and any potential hidden dangers.
- Isolated both the hot and cold water supplies.

Note : If not already present , you may wish to consider installing isolation valves for ease of future maintenance. Isolation valves can be fitted anywhere prior to connecting the Bath shower mixer to the water supply pipes. However , they should always be installed in a safe and convenient place for ease of future access.

Installation

- Ensure that both the Hot and Cold water supplies are isolated.**
- Taking the bath shower mixer, place the Plinth seal(s) (9) under the Plinth(s) (8), seat the bath shower mixer onto the bath, whilst still ensuring that the Plinth seal(s) (9) is correctly located under the Plinth(s)(8). **Failure to do this may result in water leakage during use between the base of the bath shower mixer and the bath.**
- Place Sealing washer(s) (10) onto the Inlet tail(s) (7) and then screw Nut(s) (11) onto the Inlet tail(s) (7), but do not fully tighten. Correctly align the bath shower mixer to the desired position on the bath and whilst holding the bath shower mixer, tighten Nut(s) (11) until the bath shower mixer is firmly fixed in the correct position.
- Your bath shower mixer should now be firmly fixed in position.
- Connect the 'Hot' water supply to the 'Hot' inlet tail (7). (This is usually the left inlet tail when viewed from the front) and the 'Cold' water supply to the 'Cold' inlet tail (9)
- Check all joints are tight and the water connections have been made correctly.
- Ensure that the shower outlet swivel connector (19) has the water outlet directed to either side of the spout (see diagram on page 2 , position 'ok') . Failure to do this will lead to the shower hose obstructing the bath fill outlet.
- Connect the shower hose to the Handset and the Shower outlet swivel connector (19) at the other end.
- Fit the shower handset into the wall mount bracket , place the wall mount bracket against the wall to find a suitable place to fix the wall mount bracket (Note - when deciding where to fix the wall mount bracket , please ensure that the shower hose will not be stretched or subjected to any unnecessary tight bends). Once a suitable place is found , mark the position of the wall mount bracket . Remove the shower handset and fix the wall mount bracket to the wall taking care of any hidden pipes when doing so.
- Place the handset into the wall mount bracket
- Turn on the 'Cold' water supply.
- Slowly turn on the 'Cold' bath tap as there may be a sudden spurt of water. Then turn the bath tap on and off several times and ensure water flows through the tap outlet and also the tap turns off correctly whilst continuing to check all joints for any leaks.
Please note, it is advisable to check the joints for several minutes to ensure all joints are water tight.
- Turn off the 'Cold' bath tap.
- Turn on the 'Hot' water supply and repeat the above process for the 'Hot' bath tap. **Caution should be taken when working with 'Hot' water to prevent scalding.**
- Now turn on both hot and cold bath taps to ensure a mixed water temperature can be achieved.
- Take hold of the shower handset , Lift the diverter knob and check that the water now diverts to the handset . Check all joints to ensure that there are no leaks
- Turn off both hot and cold bath taps. Congratulations you have now successfully installed your new KEA bath shower mixer.

Important Note:-

The swivel outlet (19) should be direct to either side of the bath spout to avoid interference with the water flow from the bath spout outlet.