

Product Care

To maintain a high quality finish of your product , you should avoid using any abrasive detergents. Some detergents will aggressively attack the surface over a period of time leading to irreversible damage. Instead, it is advisable to use a soft cloth with warm water . This will significantly prolong the life and looks of the product. If for some reason you need to use a detergent when cleaning , only use a low concentrated brand.

Warranty

Methven warrants this product against manufacturing defects and that it is suitable for use under the general operating conditions specified in this instruction sheet. However, regional regulations apply and may affect your warranty. Please refer to **www.methven.com** or call customer service for full details.

New Zealand
0800 804 222

Australia
1300 638 483

UK
0800 195 1602

KEA SEQUENTIAL MINI VALVE KESSMCP

Installation Instructions

TECHNICAL SPECIFICATIONS:

Operating Pressure:

Min: 20kPa/0.2bar

Max: 500kPa/5bar* (max. Pressure Ratio 5:1)

Optimum: 30kPa/0.3bar - 300kPa/3bar

Operating Temperature:

Hot: Max 80°C

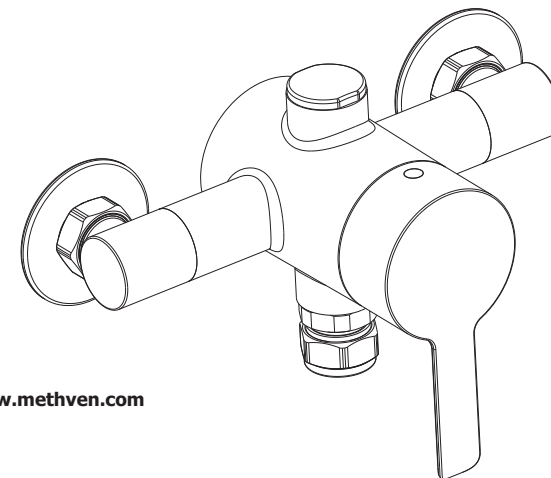
Cold: Min 5°C

Inlet Connections:

All 1/2" BSP

* Regional specific regulations apply.

Please refer to your warranty statement at **www.methven.com**

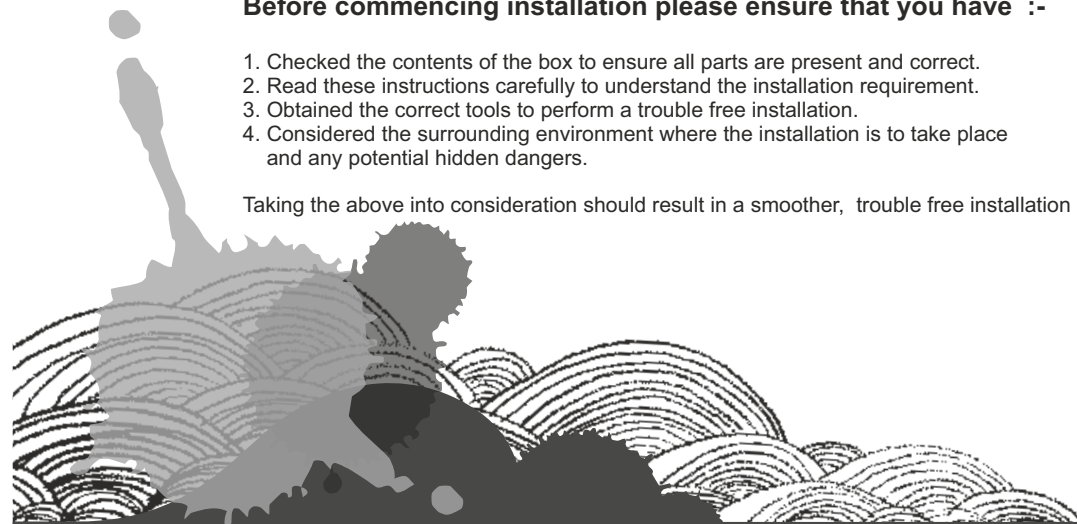


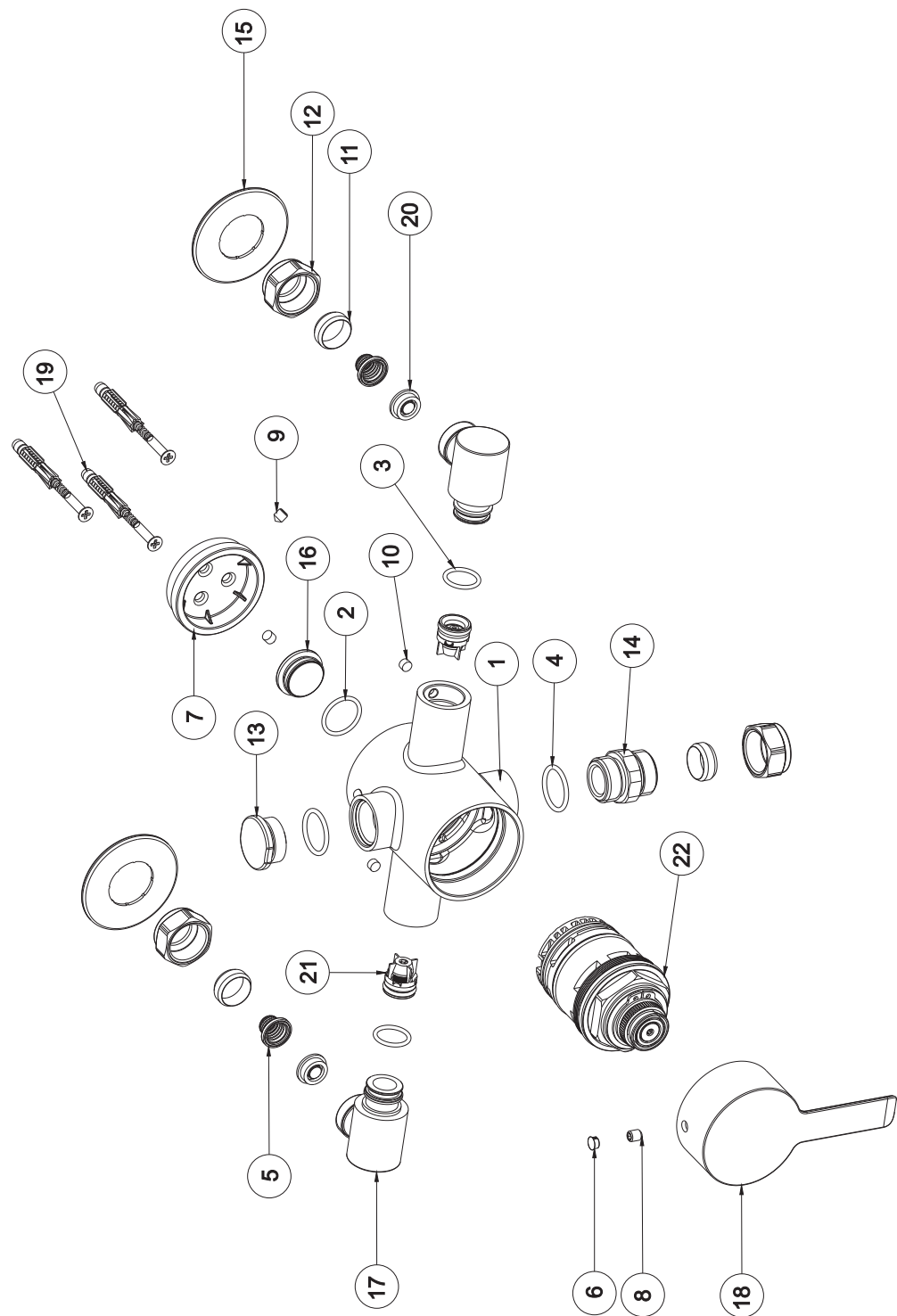
Your product should be fitted in compliance with the Water Authority Regulations. If you are unsure as to what the regulations require, you can contact your Local Water Authority for further details.

Before commencing installation please ensure that you have :-

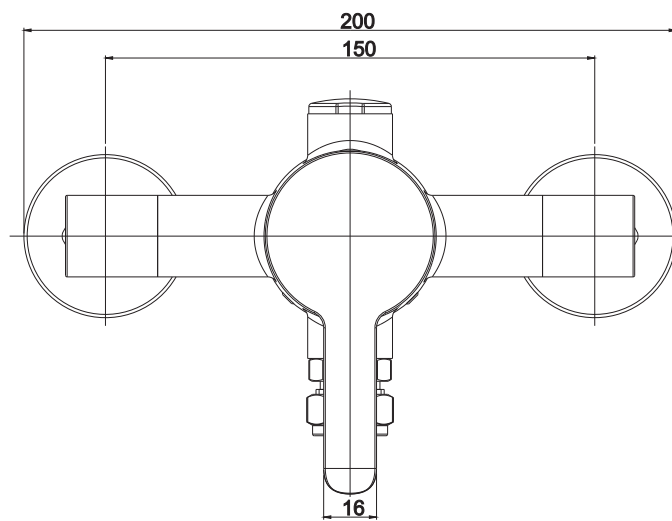
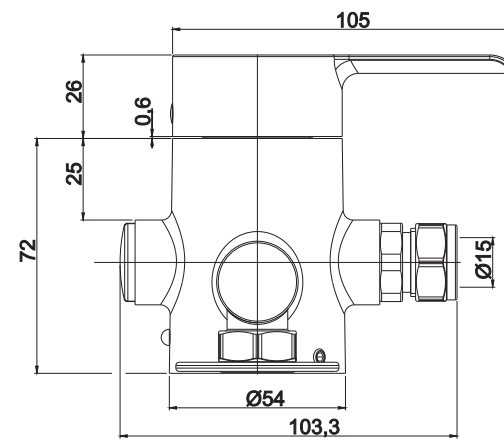
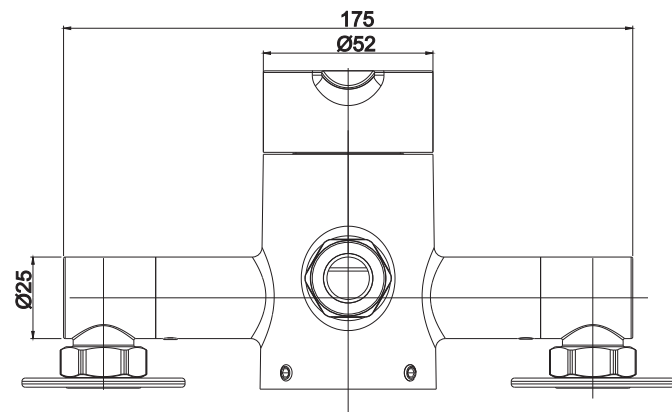
1. Checked the contents of the box to ensure all parts are present and correct.
2. Read these instructions carefully to understand the installation requirement.
3. Obtained the correct tools to perform a trouble free installation.
4. Considered the surrounding environment where the installation is to take place and any potential hidden dangers.

Taking the above into consideration should result in a smoother, trouble free installation





2



7

GUARANTEE

This product is covered by a 5 year guarantee from date of purchase for manufacturing faults. Please retain proof of purchase.

The guarantee does not cover faults or damages caused by bad installation and/or maintenance, ordinary wear and tear, water composition i.e. :

-
- Incorrect installation, inversion of supply pipes
- Pressures or temperatures exceeding above limits
- Improper manipulation, tampering, bad or missed maintenance
- Foreign bodies and/or scale brought by water, ice, ordinary wear, water composition
- Use of improper cleaning or maintenance product or substance

AFTERCARE INSTRUCTIONS

Whilst modern plating techniques are used in the manufacture of this item, the surfaces will wear if not cleaned correctly. Clean this product with a soft cloth with clean water. The use of any abrasive material will invalidate the guarantee.

TECHNICAL FEATURES

OPERATING SPECIFICATIONS

Max cold supply: 25°C
Max hot supply: 80°C
Min hot supply: 10°C higher than max required mixer temperature
Advisable hot supply: 55-65°C
Mixed water: 41°C

OPERATING PRESSURES

Minimum: 0.2 bar
Maximum: 5 bar (max. Pressure Ratio 5:1)
Maximum recommended pressure for maximum efficiency: 3 bar
Recommended working pressure: 0.3 - 3 bar
Operating pressures (on hot and cold line) should be kept as balanced as possible, and from a common source, in order to ensure the maximum efficiency of the mixer. To reduce the flow rate, when the mixer is fitted to high pressure systems, fit flow restrictors as shown in paragraph "HIGH PRESSURE SYSTEMS". When pressures exceed 5 bar, installation of a pressure reducing valve is required. If supplying the shower with a Combi-Boiler at over 1.5 bar, a 7 lpm, low pressure flow limiter should be installed.

HOT WATER SUPPLY

This mixer is suitable for any water heating system. In case of instantaneous heaters, hot water flow has to meet at least the minimum flow required by the heater to start and go on burning (see heater specifications).

HIGH PRESSURE SYSTEMS

This mixer is suitable for low and high pressure systems. In the event this mixer is installed on a high pressure system, flow restrictors (supplied) can be fitted to reduce water consumption to approx 7l/min from the shower outlet. In order to do this, proceed as follows (refer to exploded drawing at page 2):

1. Isolate water supply to the mixer.
2. Remove the grub screws (9) from mounting plinth (7).
3. Unscrew the nuts (12) from the elbows (17).
4. Remove the filters (5) and insert the flow restrictors (20) into the elbows (17), then re-fit the filters and the nuts to the elbows.

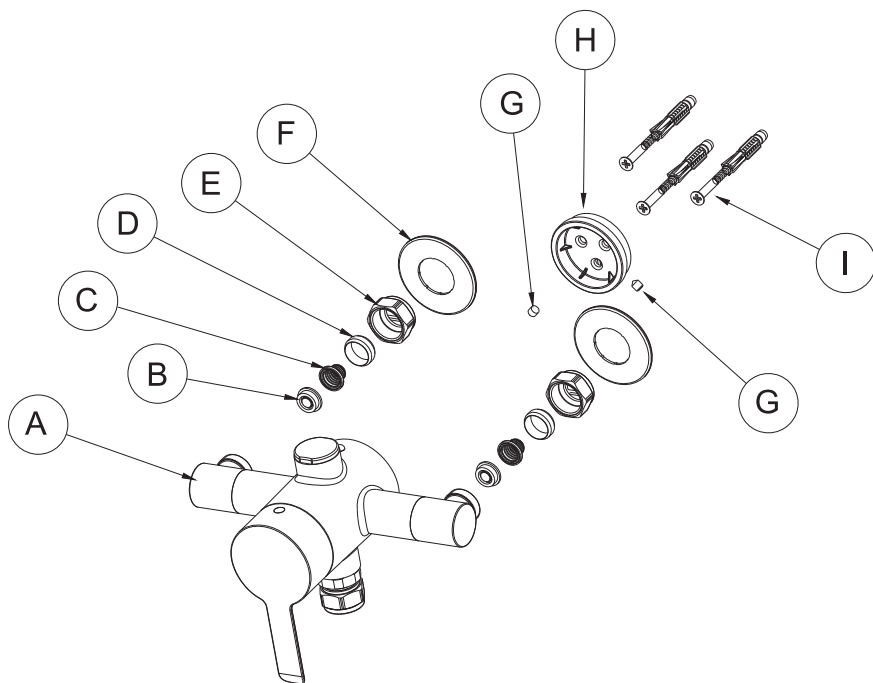
OPERATION

Turn the handle (18) anticlockwise: this will open the "cold" inlet port to maximum, giving cold water flow. Further rotation of the lever will gradually open the "hot" inlet port whilst closing the "cold" port, thus giving mixed/tepid flow. Continued rotation of the lever will then fully open the "hot" port whilst closing the "cold" port to give maximum hot water flow.

PLUMBING & INSTALLATION

An independent water supply (both hot and cold) is required for the shower system. Large runs of pipework will cause frictional loss of pressure. If more than one shower valve is installed ensure constant supply of hot and cold water can be maintained. Hot water supply **MUST** always be on the LEFT inlet.

1. Isolate water supply to the mixer.
2. Carefully flush pipework before commencing installation.
3. Place mounting plinth (H) centrally, drill holes and fix it with the supplied screws (I).
4. Fit the mixer to the copper pipes coming from the wall and to the mounting plinth already fixed to the wall, paying attention to place flanges (F).
5. Fix the mixer to the mounting plinth (H) using the grub screws (G) and tighten nuts (E) ensuring olives (D) are seated correctly.
6. Turn supply back on and check for leaks.
Please be advised that component C is already installed in the elbows (A), while part B is available in the box as an optional installation, where required.



FILTER CHANGE AND CLEANING

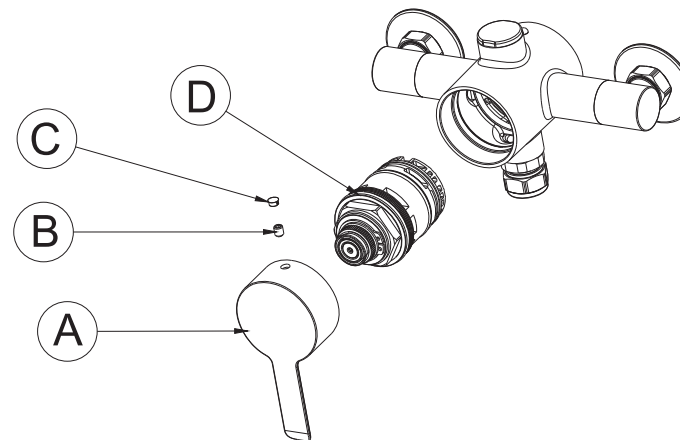
Through years of use impurities and limescale can restrict the flow of water through the mixer. If the mixer's performance deteriorates the filters or the cartridge may need to be cleaned or replaced.

In order to do this, please follow the following procedures:

1. Isolate water supply to the mixer.
2. Unscrew the nuts (E), undo grub screws (G) and remove the mixer from plinth (H).
3. The filters (C) are located in the inlet elbows (A): carefully remove them.
4. Wash filters under running water or leave to soak in vinegar or de-scaling agent.
5. Refit the filters (C).
6. See paragraph "PLUMBING & INSTALLATION" for refitting valve.

CARTRIDGE CHANGE AND CLEANING

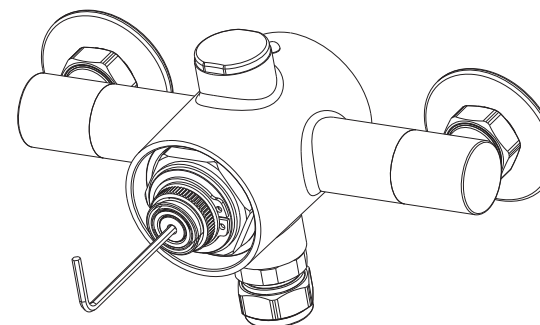
1. Isolate water supply to the mixer.
2. Remove the cap (C) and undo the grub screw (B) then remove the lever handle (A).
3. Unscrew and remove the cartridge from the mixer being careful not to damage the seals. Wash the cartridge under running water or leave to soak in vinegar or de-scaling agent.
4. Before refitting the cartridge, clean the mixer housing and grease the o-rings.
5. Place the cartridge into the mixer and tighten it at 12 Nm.
6. Place the handle (A) and screw the grub screw (B), then re-fit the cap (C).
7. Pay attention to the lever is pointing downwards.



CARTRIDGE RE-SETTING

The mixer is factory set at 41°C, to comply with BS EN1111. This can however be adjusted for site conditions or personal preference (use a common household thermometer to test water temperature). In order to do this, proceed as follows:

1. With lever handle in on position, remove the lever handle by referring to the above instructions.
2. Insert a 2,5mm Allen Key in the cartridge hole and turn it to adjust water temperature: clockwise to decrease it, anticlockwise to increase it.
3. Re-fit the lever handle.



METHVEN

Brooklands Mill
English Street
Lancashire
WN73EH

METHVEN

Satinjet Single Function Shower Kit

Installation and Maintenance Guide



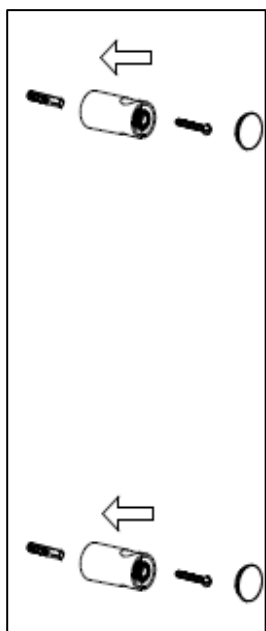
Please retain this document for future reference.

This product should be fitted in compliance with Water Regulations, by a qualified plumber.

Use only a clean damp cloth to maintain the surface finish, use of abrasive cleaning materials will invalidate your guarantee.

Customer Care Line
0800 1951602

Website
www.methven.com



Select location for kit, ensuring no wiring or pipework in the wall can be damaged, also that when the slider bracket is positioned at the top of the rail, the hose is not over extended.

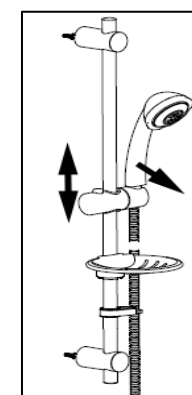
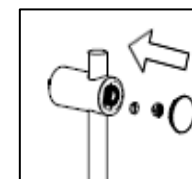
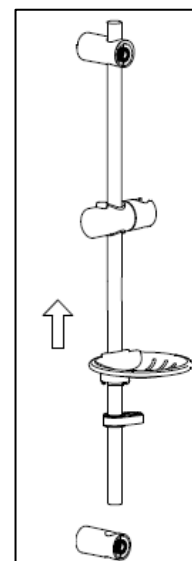
The location should also ensure that during use, the water flow is directed toward a suitable location, so as not to cause water damage.

Remove the caps from the end brackets using a sharp blade, taking care not to damage the product.

Mark the required position of the end brackets on the wall (the centre to centre dimension is variable, max 600mm)

Once marked, drill hole and fit wall plugs.

Using screws provided, fit end brackets in desired location.



Once both end brackets have been secured, push empty rail through end bracket, until end is part way between end brackets, then install slider, soap dish and hose retainer.

When rail components have been installed, push the rail through the second end bracket.

To secure the rail, place the small black rubber stopper into the threaded hole in the front of the end bracket, then fit the small brass screw and tighten using a screw driver, until tight against the rail, do not overtighten, then fit chrome caps.

Fit hose seals to both ends of shower hose.

Thread the hose through the hole in the hose retainer.

Screw the cone end of the hose to the handset.

Screw the opposite end of the hose to the mixer.

Locate the hose cone into the slide bracket, ensuring that it is fully inserted.

If the cone is not fully inserted, the handset may fall out during use.

To adjust the angle of the handset, gently move the handset just above the slider.

To move the slider, press the button and push or pull the slider, you must always press the button to move the slider.