

## Warranty Information

Proof of purchase will be required.

The guarantee does not cover faults or damage caused by incorrect installation and/or maintenance, ordinary wear and tear, water composition, etc.

\*Please see [www.deva-uk.com](http://www.deva-uk.com) for full terms and conditions of warranty

## Cleaning

Your product has a high-quality finish and should be treated with care to preserve the visible surfaces. Never use abrasives or abrasive cleaning agents to clean this product clean regularly with contamination free warm water and a damp soft cloth. Do not use products containing chlorine bleach or hydrochloric acid as these can damage the product.

We have a policy of continuous improvement and reserve the right to change specifications without notice.

METHVEN UK LIMITED

METHVEN EXPERIENCE CENTRE  
3/3A STONE CROSS COURT

YEW TREE WAY  
GOLBORNE  
WARRINGTON  
WA3 3JD  
UNITED KINGDOM

INST-NCT002  
30.06.2020

TEL: 0800 195 1602  
FAX: 0844 406 8690  
EMAIL: [sales@uk.methven.com](mailto:sales@uk.methven.com)  
[www.deva-uk.com](http://www.deva-uk.com)  
[www.methven.com](http://www.methven.com)

# Non Concussive Pre-Set Exposed Shower Valve NCT002 Installation Guide

---

## Technical Specification

### Working Pressure:

Min: 0.2 Bar

Max: 5.0 Bar

### Operating Temperature:

Hot: 65°C

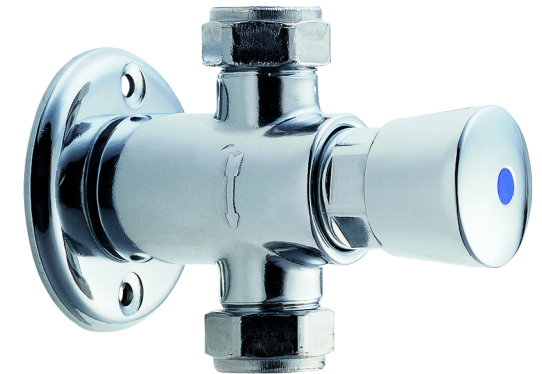
Cold: 5°C

### Inlet Connections:

15mm Copper

### Features:

- Suitable for swimming baths, leisure clubs etc
- Pre-set automatic shut off after approximately 20 seconds



## Contents

Congratulations on your purchase of your new Non-Concussive Pre-Set Exposed Shower Valve. Our fitting instructions have been created with you in mind to provide you with all the information you require and, if you need any further help, please don't hesitate to contact our customer care team on 0800 195 1602.

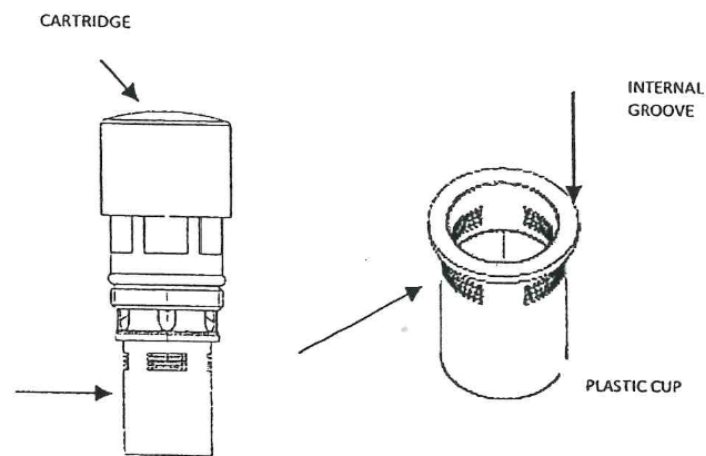
General Safety Information	3
Line Drawing	3
Product Breakdown	4
Product Breakdown	5
Installation Requirements	6
Maintenance	7
Warranty Information	8
Cleaning	8

## Maintenance

This product due to its design may need some maintenance. The regularity of this will depend on its usage and the water type. If in a hard water area maintenance may be required more often.

It is recommended to clean out the white plastic cup inside the tap/mixer to maintain good working order, especially the fine internal groove (as shown).

To do this first turn off the water supply.  
Remove the handle/valve using a spanner.  
The valve will then pull away from the tap/mixer.  
The white plastic cup may come away with the valve, if not simply remove it by pulling it from the body.  
Once removed, clean out the cup and run down the groove using a pin to clear out any debris.  
When thoroughly cleaned, replace cup, valve and tighten.



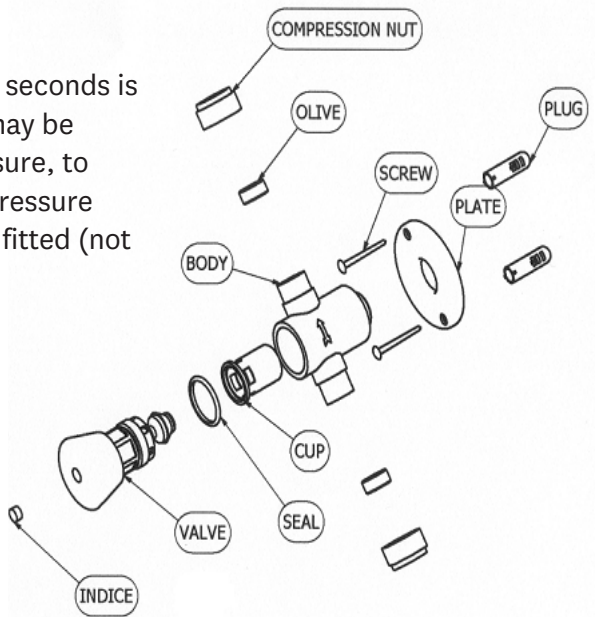
## Installation Requirements

Before commencing installation of the new product, ensure that the system has been flushed to remove any debris, which could cause damage to the valves and invalidate the warranty.

### Installation

- 1, Offer plate to the wall and mark drill holes in the required locations so that the body elbows align with pipes when fully tightened into the plate (check arrow direction on body)
- 2, Drill holes and insert plugs
- 3, Fit plate to wall and secure with screws
- 4, Screw valve into plate until secure
- 5, Connect olives and compression nuts to body
- 6, Insert pipes into body a minimum of 10mm then tighten connections to seal
- 7, Compress the valve a number of times following installation to clear out the system.

The time delay of approx 20 seconds is not adjustable, but timing may be affected by high water pressure, to overcome sever problems pressure reducing deviced should be fitted (not supplied).



Please keep these instructions for future reference and request of replacement parts

### General Safety Information

Please read all of the instructions before installation.

Methven recommends this product is installed by a competent person in compliance with all relevant regional regulations.

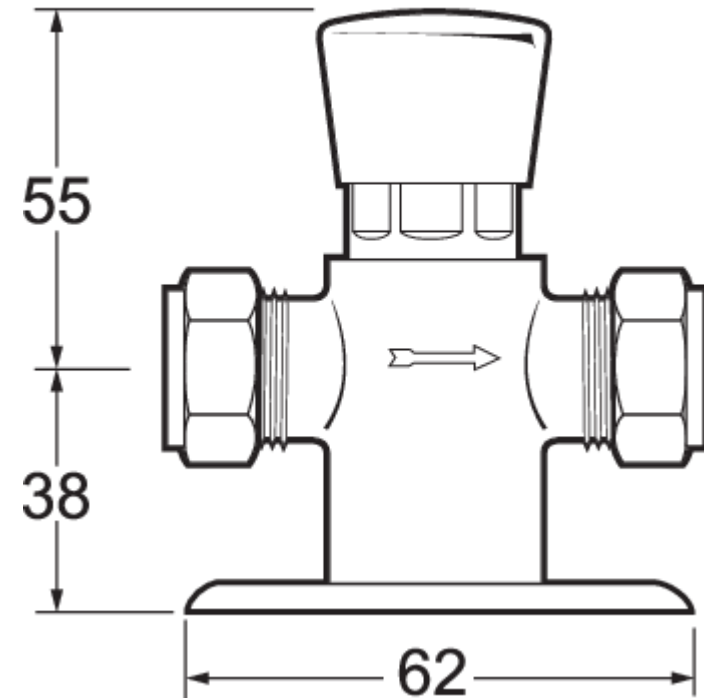
Remove all packaging and check the components for damage before starting installation.

This product **must** not be modified in any way as this will invalidate the guarantee.

It is the responsibility of the installer to ensure a waterproof seal is achieved, after installation all connections must be checked for leaks.

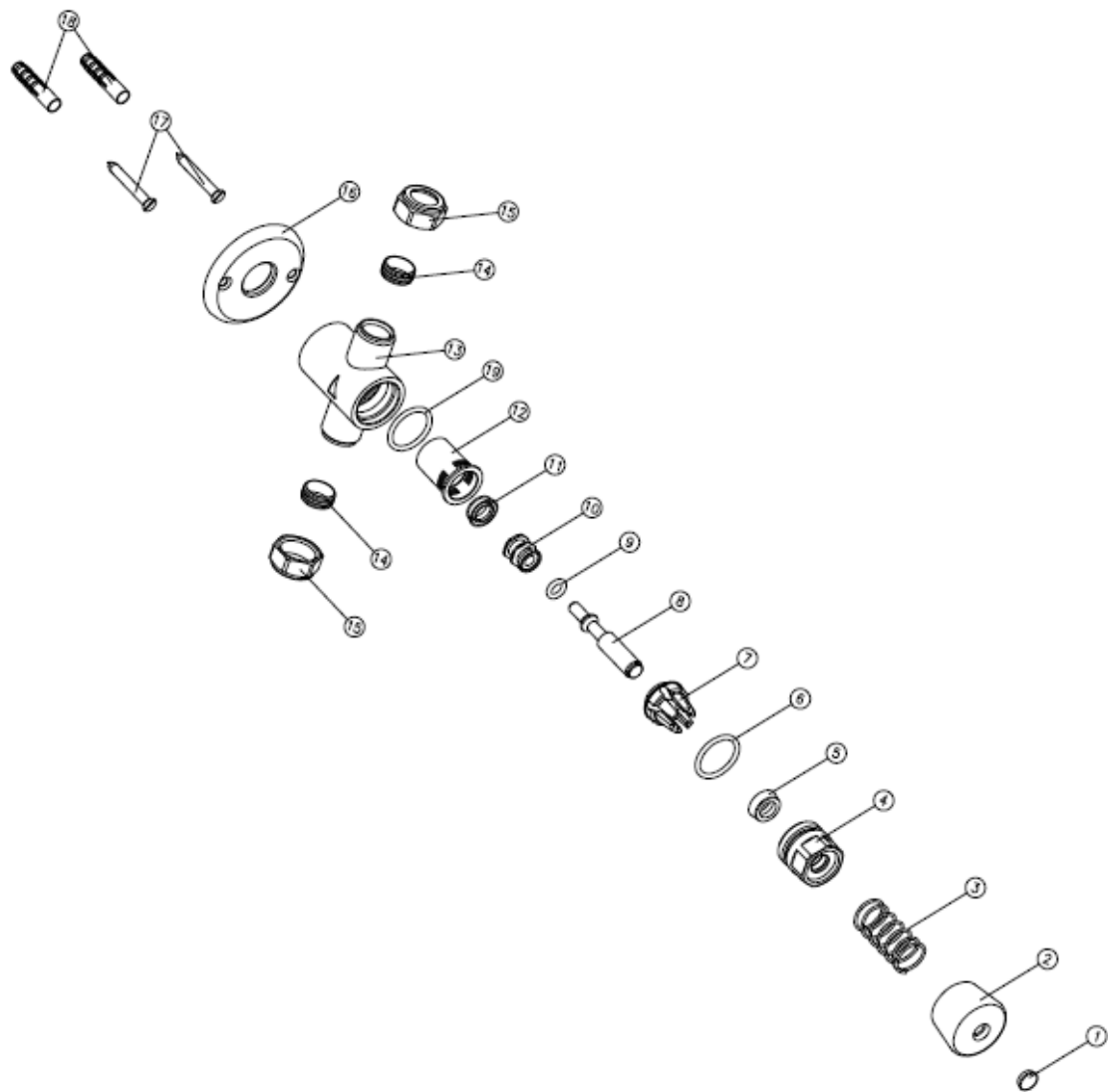
All outlets used primarily for personal hygiene shall deliver water at a safe temperature as per regional regulations.

### Line Drawing



Product Breakdown

Check all components are present prior to starting installation.



Part No	Description
1	Blue Indicator
2	Push Button
3	Spring
4	Head Valve
5	Gasket
6	O-Ring
7	Turret
8	Stem
9	O-Ring
10	Valve
11	Gasket
12	Cup Time
13	Tap Body
14	Ogiva
15	Shell
16	Plate
17	Screw Fix
18	Fastening Dowels
19	O-Ring