

## Warranty Information

Proof of purchase will be required.

The guarantee does not cover faults or damage caused by incorrect installation and/or maintenance, ordinary wear and tear, water composition, etc.

\*Please see [www.deva-uk.com](http://www.deva-uk.com) for full terms and conditions of warranty

## Cleaning

Your product has a high-quality finish and should be treated with care to preserve the visible surfaces. Never use abrasives or abrasive cleaning agents to clean this product clean regularly with contamination free warm water and a damp soft cloth. Do not use products containing chlorine bleach or hydrochloric acid as these can damage the product.

We have a policy of continuous improvement and reserve the right to change specifications without notice.

METHVEN UK LIMITED

METHVEN EXPERIENCE CENTRE

3/3A STONE CROSS COURT

YEW TREE WAY

GOLBORNE

WARRINGTON

WA3 3JD

UNITED KINGDOM

INST-INS108-V1

TEL: 0800 195 1602

FAX: 0844 406 8690

EMAIL: [sales@uk.methven.com](mailto:sales@uk.methven.com)

[www.methven.com](http://www.methven.com)

[www.deva-uk.com](http://www.deva-uk.com)

# Insignia Bath Filler

## INS108

## Installation Guide

---

### Technical Specification

#### Operating Pressure

Min: 0.1 Bar

Max: 5.0 Bar

#### Operating Temperature

Hot: 65°C

Cold: 5°C

#### Inlet Connections

3/4" BSP



Please read all of the instructions before installation.

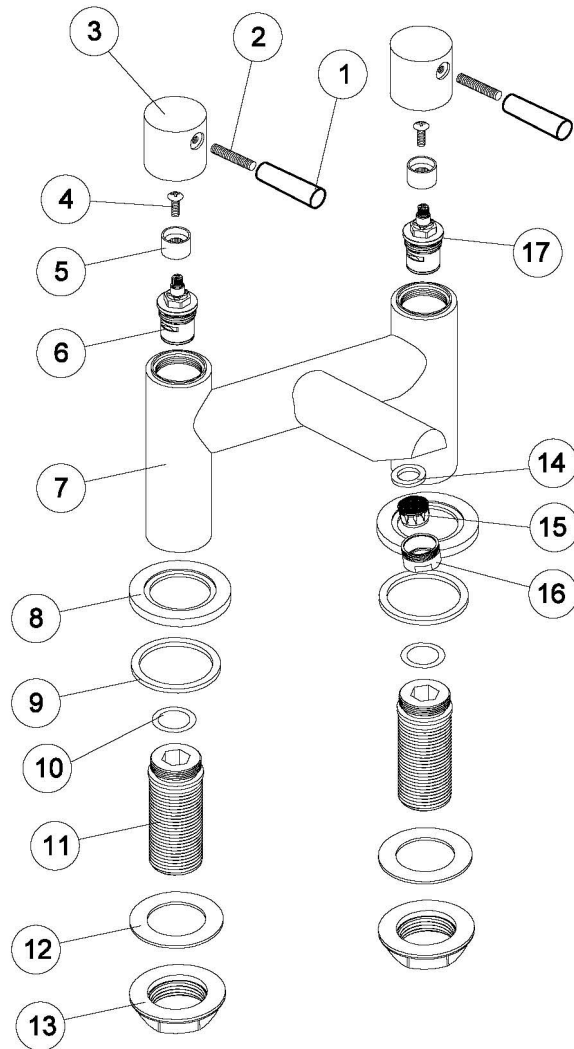
## General

Methven recommends this product is installed by a competent person in compliance with all relevant regional regulations.

After installation all connections must be checked for leaks.

All outlets used primarily for personal hygiene shall deliver water at a safe temperature as per regional regulations.

It is the responsibility of the installer to ensure a waterproof seal is achieved.



## Installation Instructions

- 1) Remove the back nuts and back nut washer from the threaded tails.
- 2) Push the mixer threaded tails through the holes in the bath, ensuring that the base rings and base ring washer and o-ring are correctly positioned, fully covering the mounting holes.
- 3) Place the back nut washer and back nuts back onto the tails, under the bath, and screw up until the tap is secured in position (do not overtighten). Please note additional sealant can be used if required.
- 4) Connect the water supply pipes to the tails and tighten, an adequate sealing method should be used to create a watertight seal.
- 5) Reinststate the water supply and test for leaks.

No.	Description
1	Lever
2	Screw
3	Handle
4	Screw
5	Plastic core
6	Cartridge
7	Main Body
8	Base ring
9	Base ring washer
10	O-Ring
11	3/4" Inlet threaded tails
12	Back nut rubber washer
13	Back nut
14	Aerator washer
15	Aerator
16	Nozzle
17	Cartridge