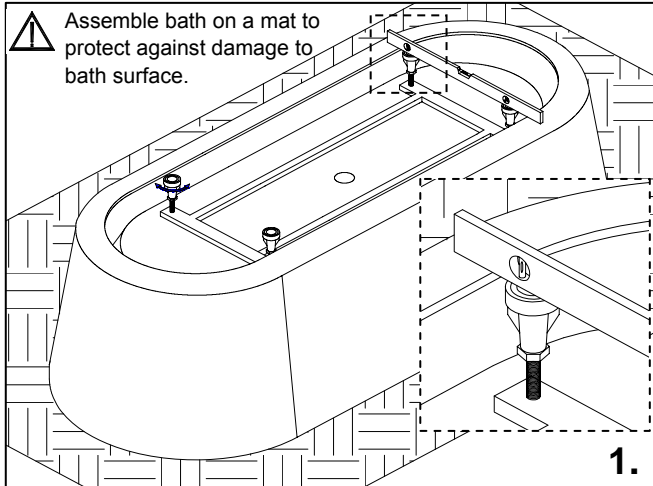
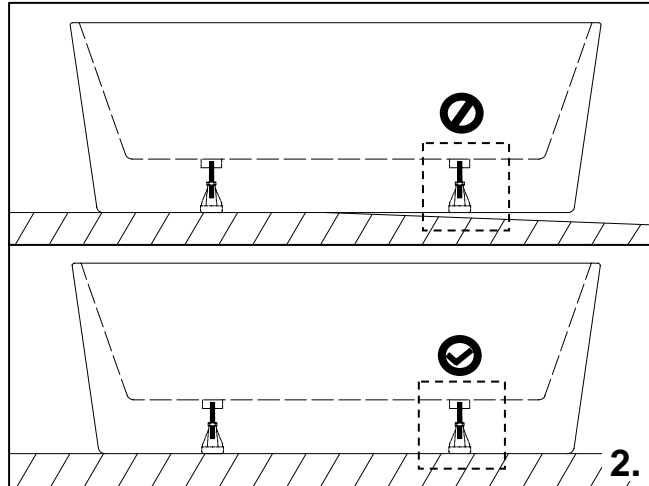


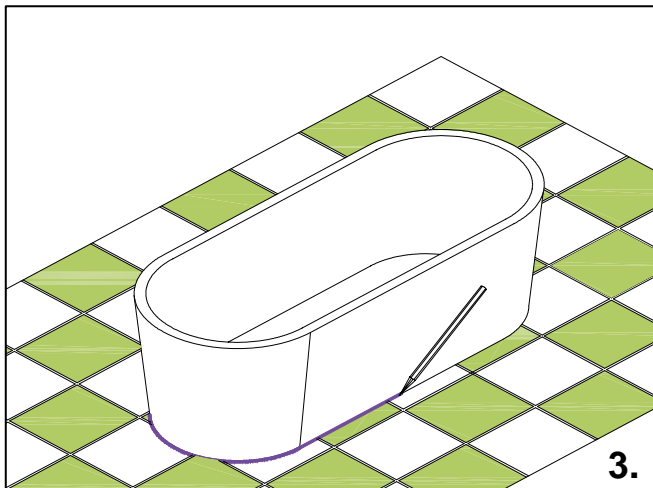
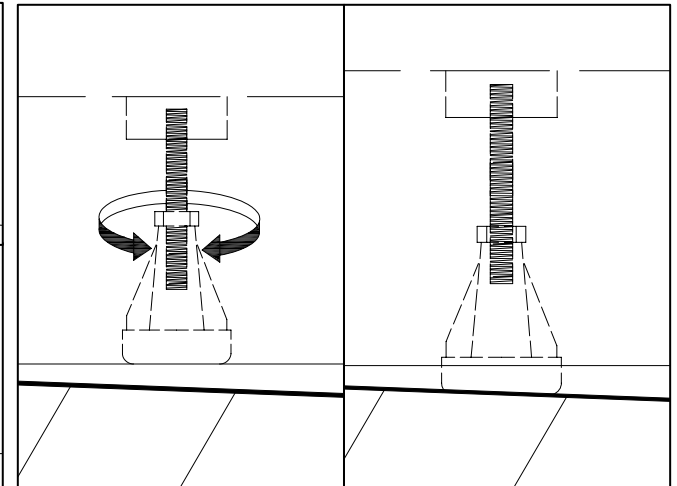
## ACRYLIC BATHTUB INSTALLATION



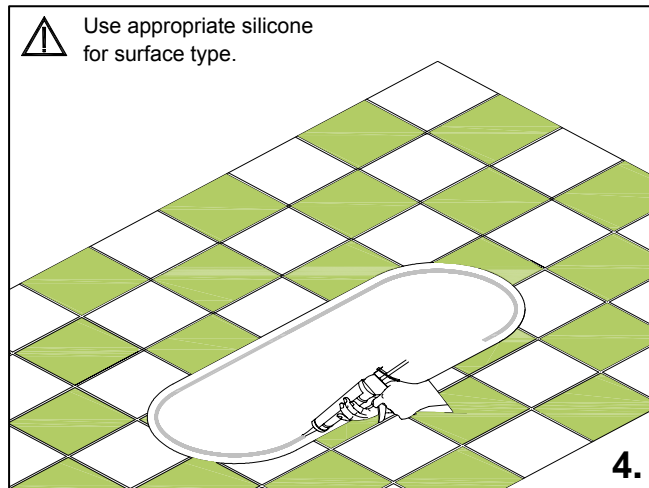
- Ensure legs are adjusted in line with the base of bath.



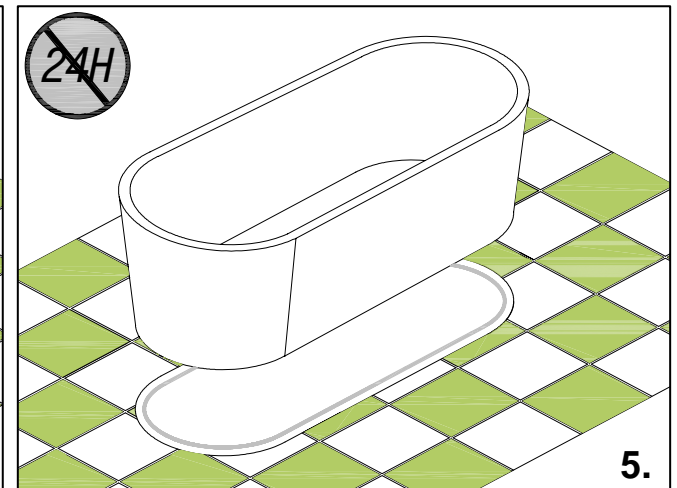
- Check that bath sits flat; if required adjust legs to compensate for floor level.



- With pencil trace outline of bath.



- Apply a thick bead of silicone within bath outline.



- Set bath in final position.

This installation guide does not include details of waste connection; final decision about installation of waste connection should be taken by a suitably qualified person.

## ***ACRYLIC BATHTUB INSTALLATION***

Suggested Skirted Bath Install Method  
Other methods may be adopted pending type of installation

