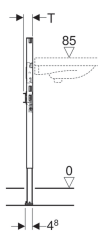
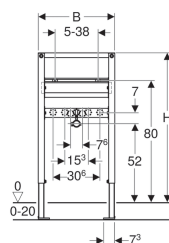


Geberit Duofix frame for washbasin, 82–98 cm, deck-mounted tap, wall anchoring



Application purposes

- For drywall construction
- For installation in part-height prewall installations
- For installation in part-height Geberit Duofix system walls
- For installation of washbasins
- For deck-mounted taps
- For floor constructions 0–20 cm

Characteristics

- Self-supporting frame, powder-coated
- Frame with \varnothing 9 mm drilling holes for fastening in wood frame construction
- Galvanized feet
- Feet adjustable 0–20 cm
- Non-slip leg supports
- Rotatable foot plates

- Foot plate depth suitable for installation in U-profiles UW 50 and UW75 and Geberit Duofix system rails
- Fastening distance for washbasin 5–38 cm
- Fastening for connection bend, height-adjustable and sound-absorbing
- Crossbar for tap adjustable in height and depth
- Self-adhesive sealing washer, fleece-laminated
- Protection plug for one-time pressure test with cold water up to a maximum of 15 bar / 1500 kPa

Scope of delivery

- 2 angle stop valves 1/2"
- 2 elbow tap connectors Rp 1/2" / R 1/2", compatible with MF
- 2 sealing washers
- 2 protection plugs
- 2 threaded rods M10
- Fastening material

Art. no.	B	H	T
111.494.00.1	50 cm	82–98 cm	6 cm

Accessories

- Geberit Duofix fastening for washbasins with fastening distance 38–58 cm
- Geberit Duofix set of wall anchors for single installation
- Geberit Duofix set of wall anchors for single and system installation
- Geberit Duofix foot fastener set on rear wall
- Geberit Duofix fastening set for stud clearance 50–57.5 cm
- Geberit Duofix set of foot extensions for floor construction 20–40 cm
- Geberit Duofix set of leg supports with large foot plate



- Any boarding must be fixed tight up against the face of the Duofix frame and screwed directly to the frame