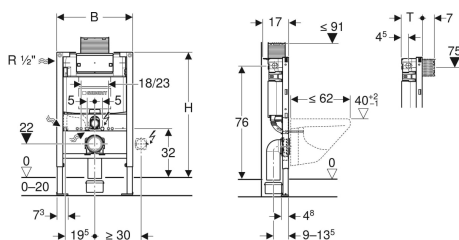


Geberit Duofix element for wall-hung WC, 82 cm, with Omega concealed cistern 12 cm



Example image



Application purposes

- For drywall construction
- For installation in part-height prewall installations
- For installation in part-height Geberit Duofix system walls
- For wall-hung WCs with connection dimensions in accordance with EN 33:2011
- For wall-hung WCs with projection up to 62 cm
- For floor constructions 0–20 cm

Characteristics

- Statically self-supporting frame, protected against corrosion with powder coating
- Frame with $\varnothing 9$ mm drilling holes for fastening in wood frame construction
- Frame prepared for support brackets for WC ceramic appliances with small contact surfaces
- Galvanized feet
- Feet adjustable 0–20 cm
- Non-slip leg supports
- Rotatable foot plates
- Foot plate depth suitable for installation in U-profiles UW 50 and UW75 and Geberit Duofix system rails
- Connection bend can be mounted without tools at different depths, adjustable range 45 mm
- Fastening for connection bend, sound-absorbing

- Concealed cistern with top or front actuation
- Concealed cistern, fully insulated against condensation
- Cistern fulfils standard requirements in accordance with EN 14055, Class II
- Immediate post flush possible with factory setting
- Tool-free installation and maintenance work on concealed cistern
- Water supply connection on the left or rear left
- Protection cover box for service opening protects against moisture and dirt
- Protection box for service opening can be cut to length
- With conduit pipe for feed pipe for Geberit AquaClean shower toilets and for connection cable
- Fastening option for electrical connection
- Power & Connect Box mountable

Technical data

Flow pressure	0.1–10 bar
Operating temperature, water max.	25 °C
Flush volume, factory setting	5.8 / 3 l
Flush volume large, adjustment range	4 / 4.5 / 6 / 7.5 l
Flush volume small, adjustment range	2–4 l
Calculated flow rate	0.11 l/s
Minimum flow pressure for calculated flow rate	0.5 bar

Scope of delivery

- Water supply connection Rp 1/2" - R 1/2", compatible with MF, with integrated angle stop valve and hand wheel
- Protection box for service opening
- 2 wall anchors
- Connection set for WC, $\varnothing 90$ mm
- Connection bend 90° made of PE-HD, $\varnothing 90$ mm
- Adaptor socket made of PE-HD, $\varnothing 90 / 110$ mm
- 2 protection plugs
- 2 threaded rods M12
- Fastening material
- Geberit pull disc for Type 212 flush valve for Omega concealed cistern 82 cm

Art. no.	B	H	T
111.004.00.3	50 cm	82 cm	14 cm

Accessories

- Geberit Power & Connect box
- Geberit set of Power & Connect box and power supply unit for element for wall-hung WC
- Geberit set of support brackets for WC ceramic appliances with small contact surfaces
- Geberit Duofix set of wall anchors for single installation
- Geberit Duofix set of wall anchors for single and system installation
- Geberit Duofix set of foot extensions for floor construction 20–40 cm
- Geberit concealed outlet for drywall and solid wall construction