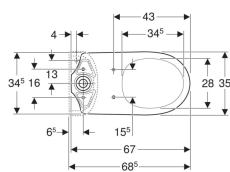
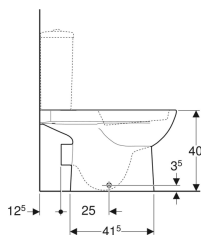
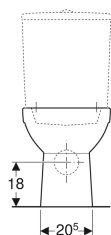


Geberit Selnova floor-standing WC for close-coupled exposed cistern, washdown, horizontal outlet, semi-shrouded



Example image



Application purposes

- For close-coupled exposed cistern

Characteristics

- Floor-standing
- Washdown WC
- With flush rim

- Type 1, full flush volume 6 l, in accordance with EN 997
- Type 2 in accordance with EN 997
- Horizontal outlet
- Semi-shrouded

Technical data

Product material | Vitreous china

Scope of delivery

- WC ceramic appliance

- Fastening material

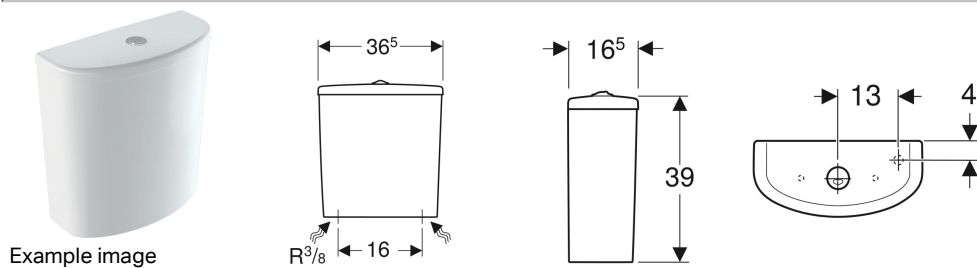
To order additionally

- Cistern

- WC seat

Art. no.	Colour / surface	B	H	T
501.042.00.6	white	36 cm	40 cm	68 cm

Geberit Selnova exposed cistern, close-coupled, dual flush, bottom water supply connection



Application purposes

- For close-coupled installation

Characteristics

- Dual flush
- Water supply connection on the bottom

Technical data

Flush volume, factory setting	4 and 2.6 l
Flush volume large, adjustment range	4 / 6 l
Flush volume small, adjustment range	2.6 / 4 l
Product material	Vitreous china

Scope of delivery

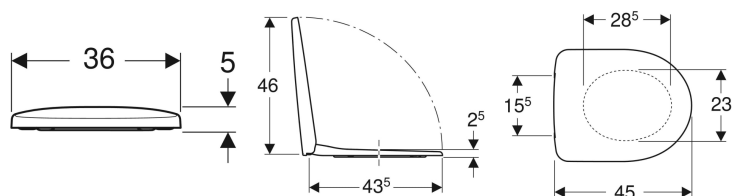
- Exposed cistern, close-coupled
- Mechanism

Art. no.	Colour / surface	B	H	T
501.047.00.6	white	36.5 cm	38 cm	16.5 cm

Geberit Selnova WC seat, fastening from below



Example image



Characteristics

- Overlapping WC lid
- Hinges made of metal

Technical data

Product material	Duroplast
Fastening distance	15.5 cm

Scope of delivery

- WC seat

Art. no.	Colour / surface	Quick-release hinges	Soft-closing mechanism	Fastening	Hinge material
500.331.01.1	white / glossy	no	no	from below	Metal