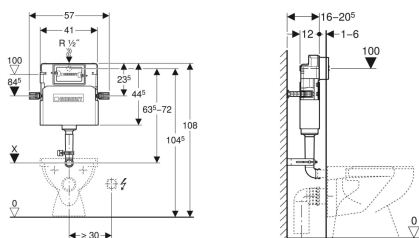


## Geberit Delta concealed cistern 12 cm, 6 / 3 litres, with flush plate Delta35



Example image



### Application purposes

- For drywall construction
- For installation in part or room-height prewall installations
- For installation in room-height installation walls
- For floor-standing WCs

### Characteristics

- Concealed cistern with front actuation
- Concealed cistern, fully insulated against condensation
- Cistern fulfils standard requirements in accordance with EN 14055, Class II

### Scope of delivery

- Angle stop valve R 1/2", compatible with MF, with adapter ring
- Protection box for service opening, made of polystyrene foam
- Flush plate Delta50
- 2 distance bolts
- Flush bend 90°
- Protection plug

- Immediate post flush possible with factory setting
- Flush bend fitted
- Water supply connection on the rear or top centre
- Connection hose on angle stop valve can be attached without tools

### Technical data

Flow pressure	0.1-10 bar
Maximum operating temperature, water	25 °C
Flush volume, factory setting	5.8 and 3 l
Flush volume small, adjustment range	3-4 l

- Fastening for flush bend
- Flush bend extension, ø 45 mm
- Cup for flush volume reduction 4.0 / 2.6 l
- 2 fixing brackets
- Fastening material

Art. no.	Colour / surface	B	H	T
109.104.21.1	gloss chrome-plated	41 cm	44.5 cm	12 cm



- New designation Delta35 (Delta50 until 2021)

- Flush valve features settings to enable either a 6 l and 3 l flush or a 4.5 l and 3 l flush. Note: must be used with pans designed for low volume flush.
- The cistern can be operated with used water (rainwater) provided it is passed through a filter system first