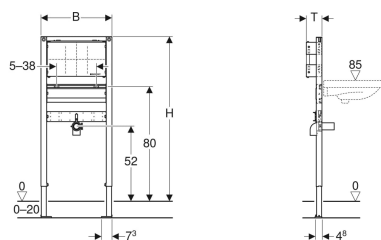


Geberit Duofix frame for washbasin, 112–130 cm, wall-mounted tap, concealed



Example image



Application purposes

- For drywall construction
- For installation in part or room-height prewall installations
- For installation in room-height installation walls
- For installation in part or room-height Geberit Duofix system walls
- For installation of washbasins
- For concealed taps
- For floor constructions 0–20 cm

Characteristics

- Self-supporting frame, powder-coated
- Frame with $\varnothing 9$ mm drilling holes for fastening in wood frame construction
- Galvanized feet
- Feet adjustable 0–20 cm

- Non-slip leg supports
- Rotatable foot plates
- Foot plate depth suitable for installation in U-profiles UW 50 and UW75 and Geberit Duofix system rails
- Fastening distance for washbasin 5–38 cm
- Mounting plate adjustable in height and depth
- Mounting plate made of veneered wood, waterproof bonded
- Building material class B2 in accordance with DIN 4102-1, resp. class D-s2, d0 in accordance with EN 13501-3
- Formaldehyde release class A in accordance with EN 1084, resp. Class E 1 according to EN 13936
- Fastening for connection bend, height-adjustable and sound-absorbing

Technical data

Product material

Steel

Scope of delivery

- Connection bend made of PE-HD, $\varnothing 50$ mm
- Seal $\varnothing 44 / 32$ mm
- 2 threaded rods M10
- Fastening material

Art. no.	B	H	T
111.493.00.1	50 cm	112–130 cm	11 cm

Accessories

- Geberit Duofix fastening for washbasins with fastening distance 38–58 cm
- Geberit Duofix set of wall anchors for single installation
- Geberit Duofix set of wall anchors for single and system installation
- Geberit Duofix fastening material for stud clearance 50–57.5 cm
- Geberit Duofix set of foot extensions for floor construction 20–40 cm



- Any boarding must be fixed tight up against the face of the Duofix frame and screwed directly to the frame