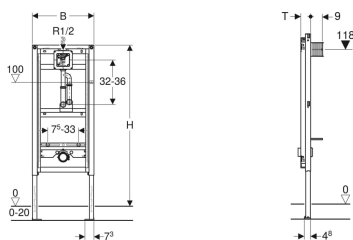


## Geberit Duofix frame for urinal, 130 cm, universal, with pipe interrupter



Example image



### Application purposes

- For drywall construction
- For installation in part or room-height prewall installations
- For installation in room-height installation walls
- For installation in part or room-height Geberit Duofix system walls
- For mounting urinals
- For installation of Geberit urinal flush controls (from year of manufacture 2009)
- For floor constructions 0–20 cm

### Characteristics

- Self-supporting frame, powder-coated
- Frame with  $\varnothing 9$  mm drilling holes for fastening in wood frame construction
- Galvanized feet
- Feet adjustable 0–20 cm
- Non-slip leg supports
- Rotatable foot plates
- Foot plate depth suitable for installation in U-profiles UW 50 and UW75 and Geberit Duofix system rails
- Flush bend fitted, with pipe interrupter
- Universal concealed housing for Geberit urinal flush controls

- Terminal for electrical connection in concealed housing
- Water supply connection on the top, on the concealed housing
- Premounted stop valve with throttle
- With built-in conduit pipe to rinse the pipeline
- Protection box for service opening 10.5 x 10.5 cm can be cut to length without tools
- Fastening for inlet  $\varnothing 32$  mm, height-adjustable
- Fastening for connection bend, height-adjustable and sound-absorbing
- Urinal fasteners M8 width- and height-adjustable
- Crossbars with centring marks, adjustable without tools
- Additional fastening possible for urinal with accessories

### Technical data

|   |          |
|---|----------|
| Flow pressure                           | 1-8 bar  |
| Maximum test pressure, water            | 16 bar   |
| Maximum test pressure, air / inert gas  | 3 bar    |
| Maximum operating temperature, water    | 30 °C    |
| Flow rate at 1 bar without flow limiter | 0.3 l/s  |
| Flow rate at 1 bar with flow limiter    | 0.18 l/s |
| Product material                        | Steel    |

### Scope of delivery

- Water supply connection R 1/2"
- Protection box with cover
- Connection pipe between inlet  $\varnothing 32$  mm and urinal, with seal to urinal
- 2 protection plugs
- Straight connector made of PVC,  $\varnothing 50$  mm
- Urinal trap  $\varnothing 50$  mm, with seal on urinal
- 2 threaded rods M8
- Fastening material

| Art. no.     | B     | H      | T      |
|--------------|-------|--------|--------|
| 111.622.00.1 | 50 cm | 130 cm | 7.5 cm |

### Accessories

- Geberit Duofix set of wall anchors for single installation
- Geberit Duofix set of wall anchors for single and system installation
- Geberit Duofix fastening material for stud clearance 50–57.5 cm
- Geberit Duofix set of foot extensions for floor construction 20–40 cm



- Refer to your local water authority for further guidance on compliance to UK water regulations
- Can be used for mains or tank fed water supply
- Any boarding must be fixed tight up against the face of the Duofix frame and screwed directly to the frame
- Urinal compatibility - distance between inlet and outlet no more than 505mm to fit the pipe interrupter
- Suitable for urinals with a push fit inlet connection
- Ensure pipe interrupter drainage connection installation drawing is consulted before installation is attempted
- Can be operated with used water (rainwater) provided it is passed through a filter system first