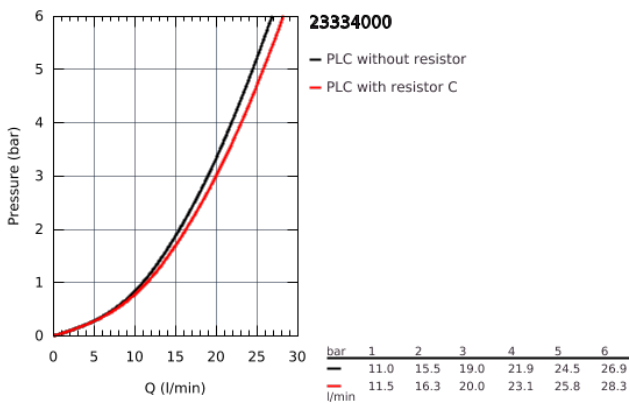
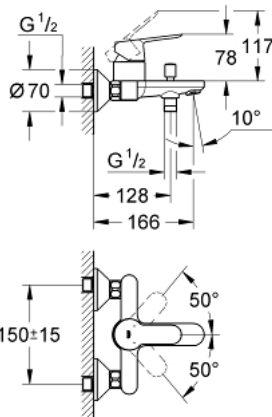


23 334 000 BAUEDGE BAUEDGE SINGLE-LEVER BATH/SHOWER MIXER 1/2"

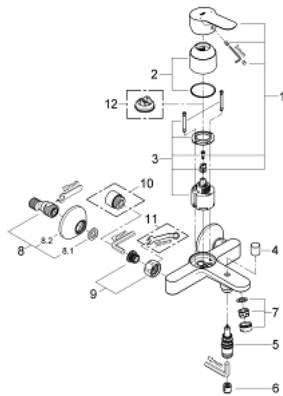


PRODUCT DESCRIPTION

- wall mounted
- metal lever
- GROHE Longlife 46 mm ceramic cartridge
- **GROHE StarLight** chrome finish
- adjustable flow rate limiter
- automatic diverter: bath/shower
- spout with mousseur
- shower bottom outlet 1/2" with integrated non return-valve
- S-unions
- metal wall escutcheon
- protected against backflow
- optional temperature limiter (46 375 000)



23 334 000 BAUEDGE BAUEDGE SINGLE-LEVER BATH/SHOWER MIXER 1/2"



SPARE PARTS, September 2012 – now

- 1: Lever (Order-nr. 46698000)
 - 2: Shield for cross handle (Order-nr. 46584000)
 - 3: Cartridge (Order-nr. 46048000)
 - 4: Diverter knob (Order-nr. 64309000)
 - 5: Diverter (Order-nr. 65655000)
 - 6: Non-return valve (Order-nr. 08565000)
 - 7: Flow restrictor (Order-nr. 13952000)
 - 8: S-union (Order-nr. 12075000)
 - 8.1: Sealing washer (Order-nr. 0138600M)
 - 8.2: Escutcheon (Order-nr. 0221000M)
 - 9: Screw joint (Order-nr. 45044000)
 - 10: Extension 3/4", 20 mm (Order-nr. 0713000M)*
 - 11: Special Spanner (Order-nr. 19377000)*
 - 12: Temperature limiter (Order-nr. 46375000)*
- * Optional accessories