

# SDCDUAL06

## DAWLISH Shower Range

Dawlish Concealed Valve with Twin Integral Stopcocks  
Fixed Head and Flexible Kit Vintage Gold



### Features:

- Optimised for UK market, designed to work at pressure range of 0.2 - 5.0bar
- Thermostatic temperature control and automatic stop prevent surges of hot or cold water
- Performance Flow to provide a drenching experience
- Large 6" shower rose
- Easy installation with an adjustable faceplate that fits total wall depths from 45mm to 75mm for a perfect flush finish

### Product Certifications:

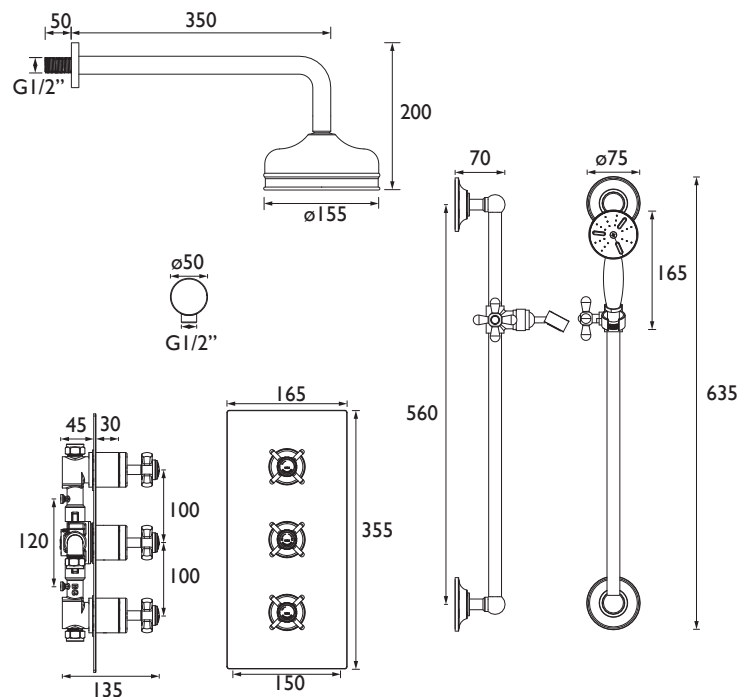


### Additional Information:

### Specification

Finish/Colour:	Gold Plated
Main Construction Material:	Brass
No of Controls:	3
Shower Type:	Recessed Dual Control
Shower Head Type:	Fixed Head & Single Function Handset
Shower Kit:	Rigid Riser with Fixed Head
Valve/Cartridge Type:	3/4" Ceramic Disc Valve - 1/4 turn
Maximum Hot Water Supply Temperature °C:	65
Plumbing System Suitability:	Suitable for all plumbing systems, ideally balanced
Minimum Dynamic Pressure (bar):	0.2
Maximum Dynamic Pressure (bar):	5
Maximum Static Pressure (bar):	10
Connection Inlet:	15mm Compression
Connection Outlet:	G 1/2"
Isolation Valve Included:	No
Check Valve Included:	Yes

### Dimensions (measurements in mm)



### Flow Rates (l/min)

System Pressure (bar)	0.2	0.5	1	2	3	5
Through Handset (mixed)	2	5.7	6.3	6.8	7.6	9.2
Through Fixed Head (mixed)	2.1	5.5	6.7	7.4	8	9.3

## TECHNICAL DATA SHEET



**HERITAGE®**  
BATHROOMS

D5